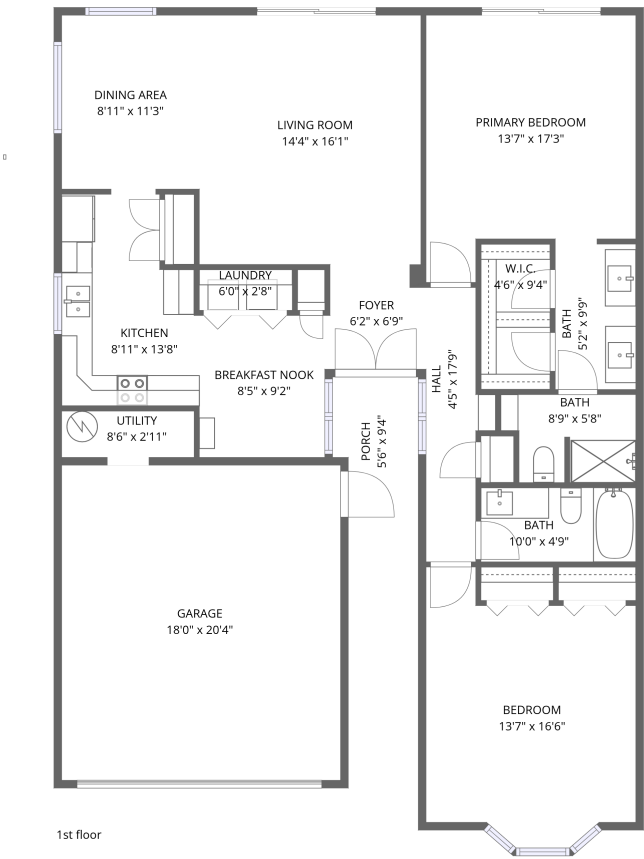


Home data report

4706 East Winston Drive, South Mountain, Phoenix, Maricopa County, Arizona, United States, 85044



Total Area: 1323 sq. ft

1st Floor: 1323 sq. ft

Excluded: Garage 366 sq. ft, Utility 26 sq. ft, Porch 48 sq. ft, Walls: 127 sq. ft

Property summary



1 Floors



2 Bedrooms



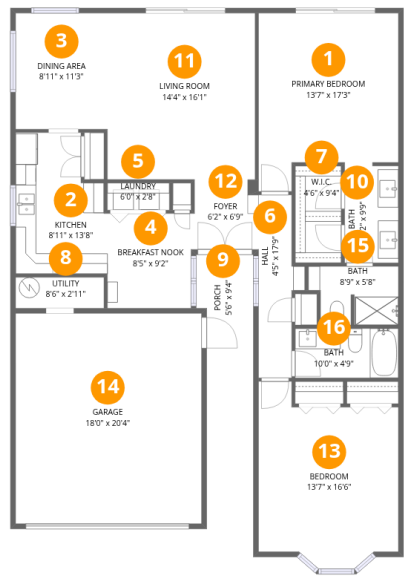
2 Bathrooms



1 Garages

Home data report

4706 East Winston Drive, South Mountain, Phoenix, Maricopa County, Arizona, United States, 85044



Room dimensions

Floor 1

Total:1323sqft Excluded: 440sqft

#		Dimensions	sqft	Counted as living area
1	Primary Bedroom	13'7" x 17'3"	205 sq. ft	Yes
2	Kitchen	8'11" x 13'8"	108 sq. ft	Yes
3	Dining Area	8'11" x 11'3"	100 sq. ft	Yes
4	Breakfast Nook	8'5" x 9'2"	75 sq. ft	Yes
5	Laundry	6'0" x 2'8"	16 sq. ft	Yes
6	Hall	4'5" x 17'9"	60 sq. ft	Yes
7	W.I.C.	4'6" x 9'4"	42 sq. ft	Yes
8	Utility	8'6" x 2'11"	26 sq. ft	No
9	Porch	5'6" x 9'4"	48 sq. ft	No
10	Bath	5'2" x 9'9"	50 sq. ft	Yes
11	Living Room	14'4" x 16'1"	230 sq. ft	Yes

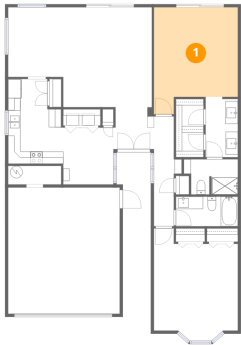
Home data report

4706 East Winston Drive, South Mountain, Phoenix, Maricopa County, Arizona, United States, 85044

#		Dimensions	sqft	Counted as living area
12	Foyer	6'2" x 6'9"	40 sq. ft	Yes
13	Bedroom	13'7" x 16'6"	206 sq. ft	Yes
14	Garage	18'0" x 20'4"	366 sq. ft	No
15	Bath	8'9" x 5'8"	45 sq. ft	Yes
16	Bath	10'0" x 4'9"	48 sq. ft	Yes

4706 East Winston Drive, South Mountain, Phoenix, Maricopa County, Arizona, United States, 85044

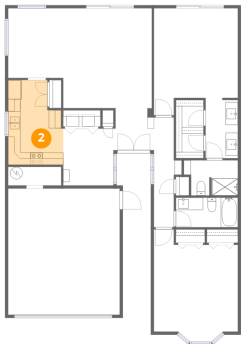
1 Floor 1 - Primary Bedroom



Dimensions: 13'7" x 17'3"
Area: 205 sq. ft
Counted as living area: Yes

Heated: Yes
Finished: Yes
Enclosed: Yes
Contiguous: Yes
Permitted: Yes
Wet space: No
Addition: No
Conversion: No

2 Floor 1 - Kitchen

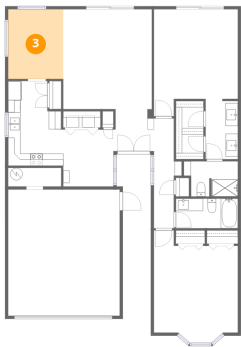


Dimensions: 8'11" x 13'8"
Area: 108 sq. ft
Counted as living area: Yes

Heated: Yes
Finished: Yes
Enclosed: Yes
Contiguous: Yes
Permitted: Yes
Wet space: No
Addition: No
Conversion: No

4706 East Winston Drive, South Mountain, Phoenix, Maricopa County, Arizona, United States, 85044

3 Floor 1 - Dining Area



Dimensions: 8'11" x 11'3"
Area: 100 sq. ft
Counted as living area: Yes

Heated: Yes
Finished: Yes
Enclosed: Yes
Contiguous: Yes
Permitted: Yes
Wet space: No
Addition: No
Conversion: No

4 Floor 1 - Breakfast Nook



Dimensions: 8'5" x 9'2"
Area: 75 sq. ft
Counted as living area: Yes

Heated: Yes
Finished: Yes
Enclosed: Yes
Contiguous: Yes
Permitted: Yes
Wet space: No
Addition: No
Conversion: No

5 Floor 1 - Laundry

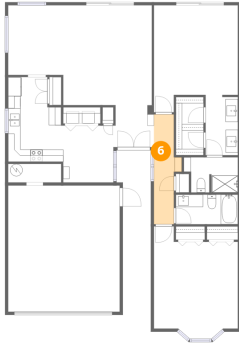


Dimensions: 6'0" x 2'8"
Area: 16 sq. ft
Counted as living area: Yes

Heated: Yes
Finished: Yes
Enclosed: Yes
Contiguous: Yes
Permitted: Yes
Wet space: No
Addition: No
Conversion: No

4706 East Winston Drive, South Mountain, Phoenix, Maricopa County, Arizona, United States, 85044

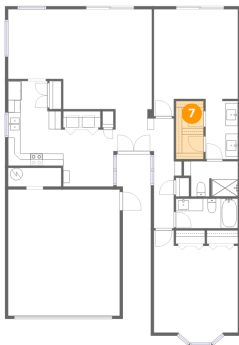
6 Floor 1 - Hall



Dimensions: 4'5" x 17'9"
Area: 60 sq. ft
Counted as living area: Yes

Heated: Yes
Finished: Yes
Enclosed: Yes
Contiguous: Yes
Permitted: Yes
Wet space: No
Addition: No
Conversion: No

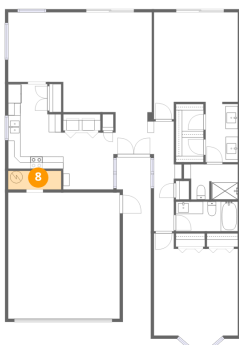
7 Floor 1 - W.I.C.



Dimensions: 4'6" x 9'4"
Area: 42 sq. ft
Counted as living area: Yes

Heated: Yes
Finished: Yes
Enclosed: Yes
Contiguous: Yes
Permitted: Yes
Wet space: No
Addition: No
Conversion: No

8 Floor 1 - Utility

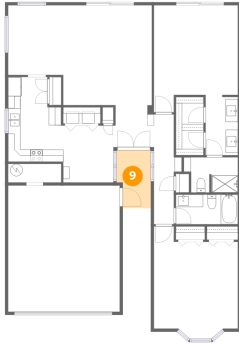


Dimensions: 8'6" x 2'11"
Area: 26 sq. ft
Counted as living area: No

Heated: Yes
Finished: No
Enclosed: Yes
Contiguous: Yes
Permitted: Yes
Wet space: No
Addition: No
Conversion: No

4706 East Winston Drive, South Mountain, Phoenix, Maricopa County, Arizona, United States, 85044

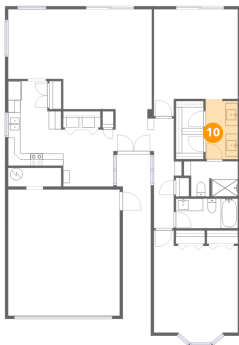
9 Floor 1 - Porch



Dimensions: 5'6" x 9'4"
Area: 48 sq. ft
Counted as living area: No

Heated: No
Finished: No
Enclosed: No
Contiguous: Yes
Permitted: Yes
Wet space: No
Addition: No
Conversion: No

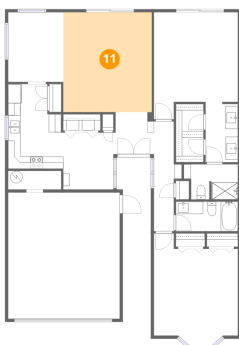
10 Floor 1 - Bath



Dimensions: 5'2" x 9'9"
Area: 50 sq. ft
Counted as living area: Yes

Heated: Yes
Finished: Yes
Enclosed: Yes
Contiguous: Yes
Permitted: Yes
Wet space: Yes
Addition: No
Conversion: No

11 Floor 1 - Living Room



Dimensions: 14'4" x 16'1"
Area: 230 sq. ft
Counted as living area: Yes

Heated: Yes
Finished: Yes
Enclosed: Yes
Contiguous: Yes
Permitted: Yes
Wet space: No
Addition: No
Conversion: No

4706 East Winston Drive, South Mountain, Phoenix, Maricopa County, Arizona, United States, 85044

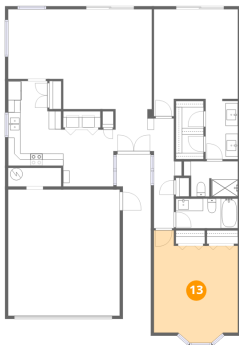
12 Floor 1 - Foyer



Dimensions: 6'2" x 6'9"
Area: 40 sq. ft
Counted as living area: Yes

Heated: Yes
Finished: Yes
Enclosed: Yes
Contiguous: Yes
Permitted: Yes
Wet space: No
Addition: No
Conversion: No

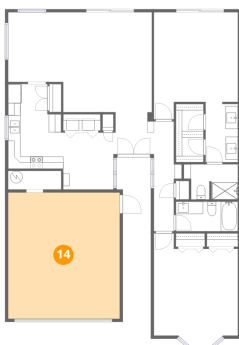
13 Floor 1 - Bedroom



Dimensions: 13'7" x 16'6"
Area: 206 sq. ft
Counted as living area: Yes

Heated: Yes
Finished: Yes
Enclosed: Yes
Contiguous: Yes
Permitted: Yes
Wet space: No
Addition: No
Conversion: No

14 Floor 1 - Garage

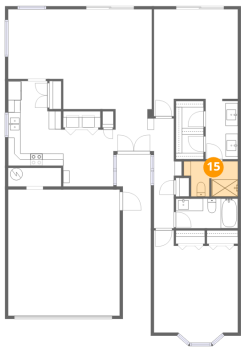


Dimensions: 18'0" x 20'4"
Area: 366 sq. ft
Counted as living area: No

Heated: No
Finished: No
Enclosed: Yes
Contiguous: Yes
Permitted: Yes
Wet space: No
Addition: No
Conversion: No

4706 East Winston Drive, South Mountain, Phoenix, Maricopa County, Arizona, United States, 85044

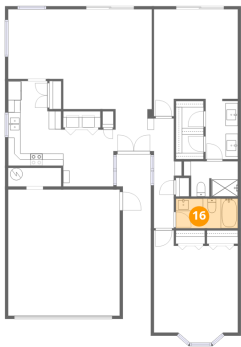
15 Floor 1 - Bath



Dimensions: 8'9" x 5'8"
Area: 45 sq. ft
Counted as living area: Yes

Heated: Yes
Finished: Yes
Enclosed: Yes
Contiguous: Yes
Permitted: Yes
Wet space: Yes
Addition: No
Conversion: No

16 Floor 1 - Bath



Dimensions: 10'0" x 4'9"
Area: 48 sq. ft
Counted as living area: Yes

Heated: Yes
Finished: Yes
Enclosed: Yes
Contiguous: Yes
Permitted: Yes
Wet space: Yes
Addition: No
Conversion: No