

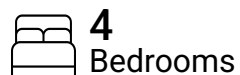


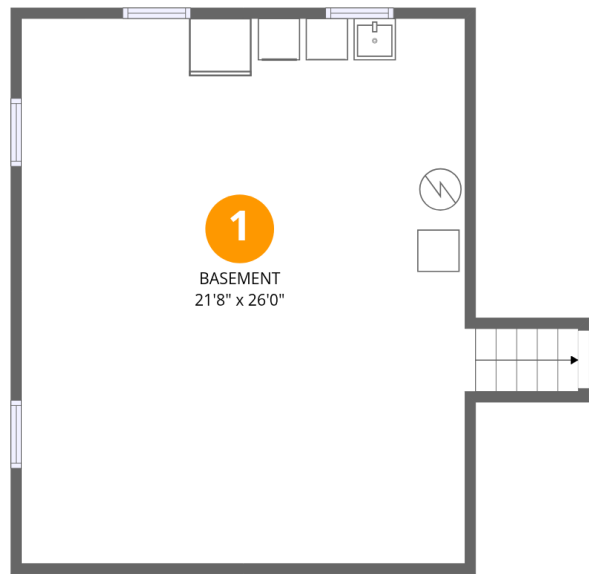
**Total Area: 1699 sq. ft**

Below Ground: 0 sq. ft, 1st Floor: 974 sq. ft, 2nd Floor: 725 sq. ft

Excluded: Basement 567 sq. ft, Garage 237 sq. ft, Patio 117 sq. ft, Porch 53 sq. ft, Deck 426 sq. ft, Walls: 201 sq. ft

## Property summary



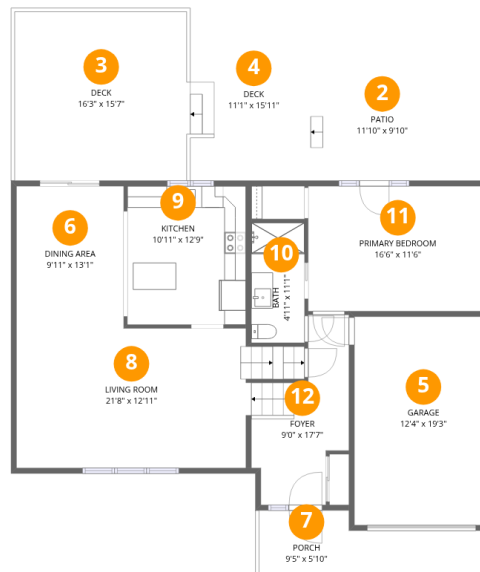


Room dimensions

Floor 1 Below grade

Total:0sqft   Excluded: 567sqft

#		Dimensions	sqft	Counted as living area
1	Basement	21'8" x 26'0"	567 sq. ft	No

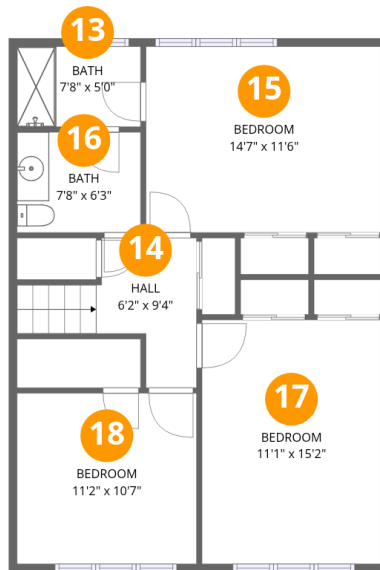


## Room dimensions

Floor 2

Total:974sqft Excluded: 833sqft

#		Dimensions	sqft	Counted as living area
2	Patio	11'10" x 9'10"	117 sq. ft	No
3	Deck	16'3" x 15'7"	249 sq. ft	No
4	Deck	11'1" x 15'11"	177 sq. ft	No
5	Garage	12'4" x 19'3"	237 sq. ft	No
6	Dining Area	9'11" x 13'1"	130 sq. ft	Yes
7	Porch	9'5" x 5'10"	53 sq. ft	No
8	Living Room	21'8" x 12'11"	276 sq. ft	Yes
9	Kitchen	10'11" x 12'9"	140 sq. ft	Yes
10	Bath	4'11" x 11'1"	54 sq. ft	Yes
11	Primary Bedroom	16'6" x 11'6"	191 sq. ft	Yes
12	Foyer	9'0" x 17'7"	127 sq. ft	Yes



## Room dimensions

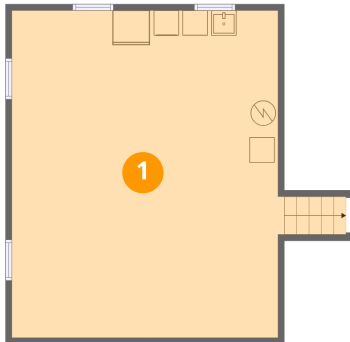
Floor 3

Total:725sqft   Excluded: 0sqft

#		Dimensions	sqft	Counted as living area
13	Bath	7'8" x 5'0"	38 sq. ft	Yes
14	Hall	6'2" x 9'4"	61 sq. ft	Yes
15	Bedroom	14'7" x 11'6"	168 sq. ft	Yes
16	Bath	7'8" x 6'3"	48 sq. ft	Yes
17	Bedroom	11'1" x 15'2"	168 sq. ft	Yes
18	Bedroom	11'2" x 10'7"	118 sq. ft	Yes



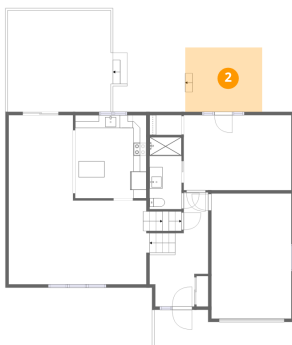
## 1 Floor 1 - Basement



Dimensions: 21'8" x 26'0"  
Area: 567 sq. ft  
Counted as living area: No

Heated: Yes  
Finished: No  
Enclosed: Yes  
Contiguous: Yes  
Permitted: Yes  
Wet space: No  
Addition: No  
Conversion: No

## 2 Floor 2 - Patio

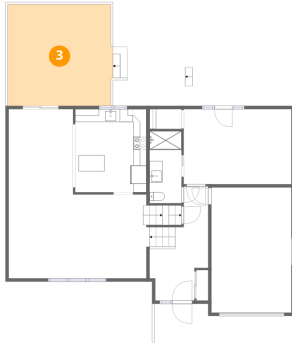


Dimensions: 11'10" x 9'10"  
Area: 117 sq. ft  
Counted as living area: No

Heated: No  
Finished: No  
Enclosed: No  
Contiguous: Yes  
Permitted: Yes  
Wet space: No  
Addition: No  
Conversion: No



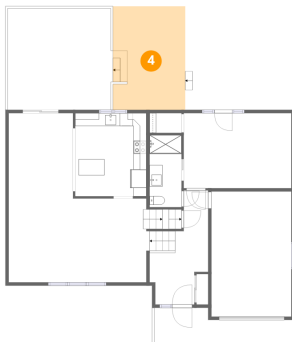
### 3 Floor 2 - Deck



Dimensions: 16'3" x 15'7"  
Area: 249 sq. ft  
Counted as living area: No

Heated: No  
Finished: No  
Enclosed: No  
Contiguous: Yes  
Permitted: Yes  
Wet space: No  
Addition: No  
Conversion: No

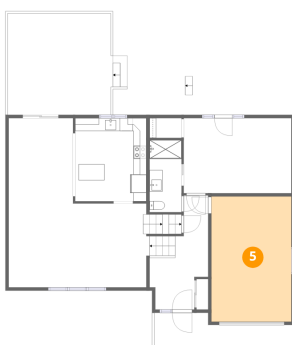
### 4 Floor 2 - Deck



Dimensions: 11'1" x 15'11"  
Area: 177 sq. ft  
Counted as living area: No

Heated: No  
Finished: No  
Enclosed: No  
Contiguous: Yes  
Permitted: Yes  
Wet space: No  
Addition: No  
Conversion: No

### 5 Floor 2 - Garage

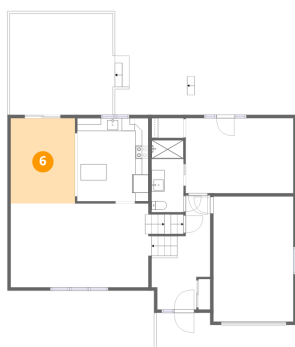


Dimensions: 12'4" x 19'3"  
Area: 237 sq. ft  
Counted as living area: No

Heated: No  
Finished: No  
Enclosed: Yes  
Contiguous: Yes  
Permitted: Yes  
Wet space: No  
Addition: No  
Conversion: No



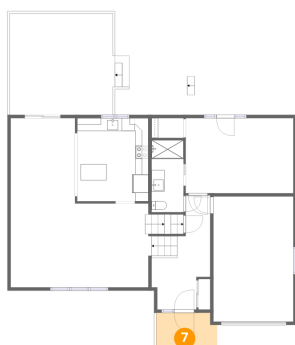
## 6 Floor 2 - Dining Area



Dimensions: 9'11" x 13'1"  
Area: 130 sq. ft  
Counted as living area: Yes

Heated: Yes  
Finished: Yes  
Enclosed: Yes  
Contiguous: Yes  
Permitted: Yes  
Wet space: No  
Addition: No  
Conversion: No

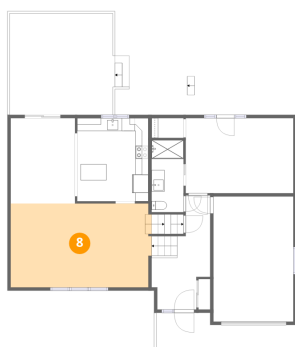
## 7 Floor 2 - Porch



Dimensions: 9'5" x 5'10"  
Area: 53 sq. ft  
Counted as living area: No

Heated: No  
Finished: No  
Enclosed: No  
Contiguous: Yes  
Permitted: Yes  
Wet space: No  
Addition: No  
Conversion: No

## 8 Floor 2 - Living Room

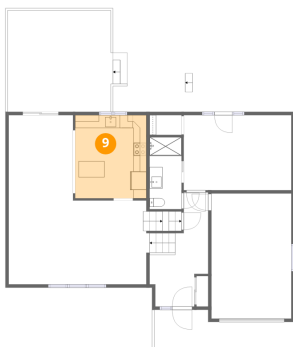


Dimensions: 21'8" x 12'11"  
Area: 276 sq. ft  
Counted as living area: Yes

Heated: Yes  
Finished: Yes  
Enclosed: Yes  
Contiguous: Yes  
Permitted: Yes  
Wet space: No  
Addition: No  
Conversion: No



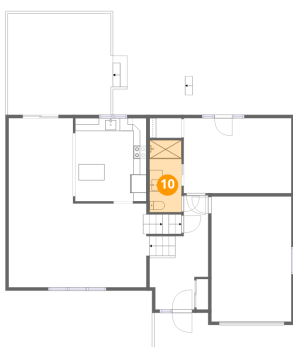
## 9 Floor 2 - Kitchen



Dimensions: 10'11" x 12'9"  
Area: 140 sq. ft  
Counted as living area: Yes

Heated: Yes  
Finished: Yes  
Enclosed: Yes  
Contiguous: Yes  
Permitted: Yes  
Wet space: No  
Addition: No  
Conversion: No

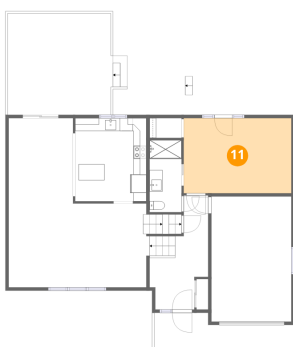
## 10 Floor 2 - Bath



Dimensions: 4'11" x 11'1"  
Area: 54 sq. ft  
Counted as living area: Yes

Heated: Yes  
Finished: Yes  
Enclosed: Yes  
Contiguous: Yes  
Permitted: Yes  
Wet space: Yes  
Addition: No  
Conversion: No

## 11 Floor 2 - Primary Bedroom



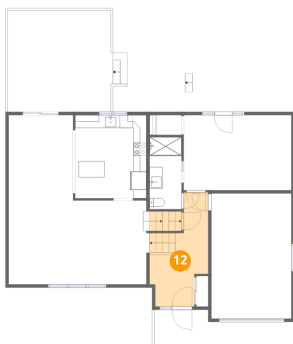
Dimensions: 16'6" x 11'6"  
Area: 191 sq. ft  
Counted as living area: Yes

Heated: Yes  
Finished: Yes  
Enclosed: Yes  
Contiguous: Yes  
Permitted: Yes  
Wet space: No  
Addition: No  
Conversion: No





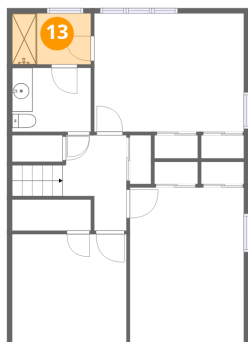
## 12 Floor 2 - Foyer



Dimensions: 9'0" x 17'7"  
Area: 127 sq. ft  
Counted as living area: Yes

Heated: Yes  
Finished: Yes  
Enclosed: Yes  
Contiguous: Yes  
Permitted: Yes  
Wet space: No  
Addition: No  
Conversion: No

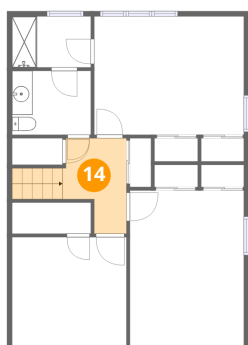
## 13 Floor 3 - Bath



Dimensions: 7'8" x 5'0"  
Area: 38 sq. ft  
Counted as living area: Yes

Heated: Yes  
Finished: Yes  
Enclosed: Yes  
Contiguous: Yes  
Permitted: Yes  
Wet space: Yes  
Addition: No  
Conversion: No

## 14 Floor 3 - Hall

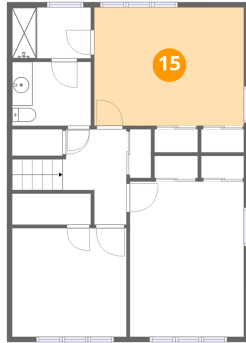


Dimensions: 6'2" x 9'4"  
Area: 61 sq. ft  
Counted as living area: Yes

Heated: Yes  
Finished: Yes  
Enclosed: Yes  
Contiguous: Yes  
Permitted: Yes  
Wet space: No  
Addition: No  
Conversion: No



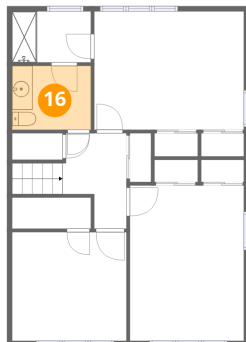
### 15 Floor 3 - Bedroom



Dimensions: 14'7" x 11'6"  
Area: 168 sq. ft  
Counted as living area: Yes

Heated: Yes  
Finished: Yes  
Enclosed: Yes  
Contiguous: Yes  
Permitted: Yes  
Wet space: No  
Addition: No  
Conversion: No

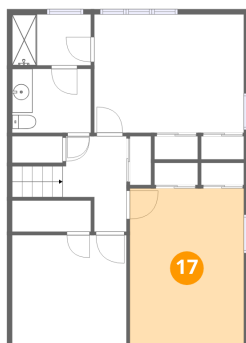
### 16 Floor 3 - Bath



Dimensions: 7'8" x 6'3"  
Area: 48 sq. ft  
Counted as living area: Yes

Heated: Yes  
Finished: Yes  
Enclosed: Yes  
Contiguous: Yes  
Permitted: Yes  
Wet space: Yes  
Addition: No  
Conversion: No

### 17 Floor 3 - Bedroom



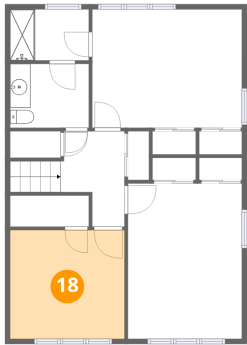
Dimensions: 11'1" x 15'2"  
Area: 168 sq. ft  
Counted as living area: Yes

Heated: Yes  
Finished: Yes  
Enclosed: Yes  
Contiguous: Yes  
Permitted: Yes  
Wet space: No  
Addition: No  
Conversion: No

290 Glenvale Road, Youngstown, Niagara County,  
New York, United States, 14174



**18** Floor 3 - Bedroom



Dimensions: 11'2" x 10'7"  
Area: 118 sq. ft  
Counted as living area: Yes

Heated: Yes  
Finished: Yes  
Enclosed: Yes  
Contiguous: Yes  
Permitted: Yes  
Wet space: No  
Addition: No  
Conversion: No