

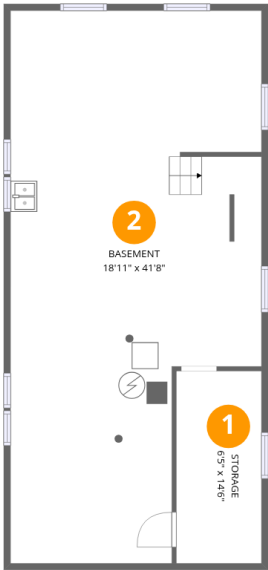
Total Area: 1180 sq. ft

Below Ground: 0 sq. ft, 1st Floor: 877 sq. ft, 2nd Floor: 303 sq. ft

Excluded: Storage 101 sq. ft, Basement 690 sq. ft, Low ceiling 216 sq. ft, Stairwell 38 sq. ft, Walls: 190 sq. ft

Property summary





Room dimensions

Floor 1 Below grade Total:0sqft Excluded: 791sqft

#		Dimensions	sqft	Counted as living area
1	Storage	6'5" x 14'6"	93 sq. ft	No
2	Basement	18'11" x 41'8"	688 sq. ft	No

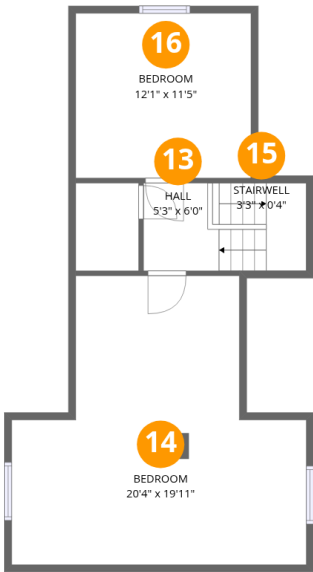


Room dimensions

Floor 2

Total:877sqft Excluded: 0sqft

#		Dimensions	sqft	Counted as living area
3	Primary Bedroom	10'8" x 11'5"	122 sq. ft	Yes
4	Kitchen	9'10" x 13'3"	126 sq. ft	Yes
5	Bath	6'1" x 6'1"	36 sq. ft	Yes
6	Bedroom	8'1" x 6'5"	52 sq. ft	Yes
7	Living Room	11'11" x 12'5"	148 sq. ft	Yes
8	Entry	6'10" x 6'1"	40 sq. ft	Yes
9	Hall	6'9" x 6'1"	41 sq. ft	Yes
10	Foyer	8'1" x 4'9"	38 sq. ft	Yes
11	Bedroom	9'4" x 8'7"	80 sq. ft	Yes
12	Dining Room	10'2" x 12'3"	124 sq. ft	Yes



Room dimensions

Floor 3 Total:303sqft Excluded: 254sqft

#		Dimensions	sqft	Counted as living area
13	Hall	5'3" x 6'0"	24 sq. ft	Yes
14	Bedroom	20'4" x 19'11"	210 sq. ft	Yes
15	Stairwell	3'3" x 0'4"	38 sq. ft	No
16	Bedroom	12'1" x 11'5"	59 sq. ft	Yes



1 Floor 1 - Storage



Dimensions: 6'5" x 14'6"
Area: 93 sq. ft
Counted as living area: No

Heated: No
Finished: No
Enclosed: No
Contiguous: Yes
Permitted: Yes
Wet space: No
Addition: No
Conversion: No

2 Floor 1 - Basement



Dimensions: 18'11" x 41'8"
Area: 688 sq. ft
Counted as living area: No

Heated: Yes
Finished: No
Enclosed: Yes
Contiguous: Yes
Permitted: Yes
Wet space: No
Addition: No
Conversion: No



3 Floor 2 - Primary Bedroom



Dimensions: 10'8" x 11'5"
Area: 122 sq. ft
Counted as living area: Yes

Heated: Yes
Finished: Yes
Enclosed: Yes
Contiguous: Yes
Permitted: Yes
Wet space: No
Addition: No
Conversion: No

4 Floor 2 - Kitchen



Dimensions: 9'10" x 13'3"
Area: 126 sq. ft
Counted as living area: Yes

Heated: Yes
Finished: Yes
Enclosed: Yes
Contiguous: Yes
Permitted: Yes
Wet space: No
Addition: No
Conversion: No

5 Floor 2 - Bath



Dimensions: 6'1" x 6'1"
Area: 36 sq. ft
Counted as living area: Yes

Heated: Yes
Finished: Yes
Enclosed: Yes
Contiguous: Yes
Permitted: Yes
Wet space: Yes
Addition: No
Conversion: No



6 Floor 2 - Bedroom



Dimensions: 8'1" x 6'5"
Area: 52 sq. ft
Counted as living area: Yes

Heated: Yes
Finished: Yes
Enclosed: Yes
Contiguous: Yes
Permitted: Yes
Wet space: No
Addition: No
Conversion: No

7 Floor 2 - Living Room



Dimensions: 11'11" x 12'5"
Area: 148 sq. ft
Counted as living area: Yes

Heated: Yes
Finished: Yes
Enclosed: Yes
Contiguous: Yes
Permitted: Yes
Wet space: No
Addition: No
Conversion: No

8 Floor 2 - Entry



Dimensions: 6'10" x 6'1"
Area: 40 sq. ft
Counted as living area: Yes

Heated: Yes
Finished: Yes
Enclosed: Yes
Contiguous: Yes
Permitted: Yes
Wet space: No
Addition: No
Conversion: No



9 Floor 2 - Hall



Dimensions: 6'9" x 6'1"
Area: 41 sq. ft
Counted as living area: Yes

Heated: Yes
Finished: Yes
Enclosed: Yes
Contiguous: Yes
Permitted: Yes
Wet space: No
Addition: No
Conversion: No

10 Floor 2 - Foyer



Dimensions: 8'1" x 4'9"
Area: 38 sq. ft
Counted as living area: Yes

Heated: Yes
Finished: Yes
Enclosed: Yes
Contiguous: Yes
Permitted: Yes
Wet space: No
Addition: No
Conversion: No

11 Floor 2 - Bedroom



Dimensions: 9'4" x 8'7"
Area: 80 sq. ft
Counted as living area: Yes

Heated: Yes
Finished: Yes
Enclosed: Yes
Contiguous: Yes
Permitted: Yes
Wet space: No
Addition: No
Conversion: No



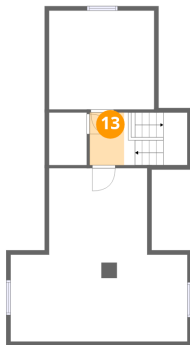
12 Floor 2 - Dining Room



Dimensions: 10'2" x 12'3"
Area: 124 sq. ft
Counted as living area: Yes

Heated: Yes
Finished: Yes
Enclosed: Yes
Contiguous: Yes
Permitted: Yes
Wet space: No
Addition: No
Conversion: No

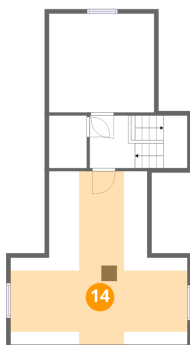
13 Floor 3 - Hall



Dimensions: 5'3" x 6'0"
Area: 24 sq. ft
Counted as living area: Yes

Heated: Yes
Finished: Yes
Enclosed: Yes
Contiguous: Yes
Permitted: Yes
Wet space: No
Addition: No
Conversion: No

14 Floor 3 - Bedroom

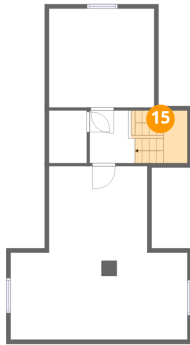


Dimensions: 20'4" x 19'11"
Area: 210 sq. ft
Counted as living area: Yes

Heated: Yes
Finished: Yes
Enclosed: Yes
Contiguous: Yes
Permitted: Yes
Wet space: No
Addition: No
Conversion: No



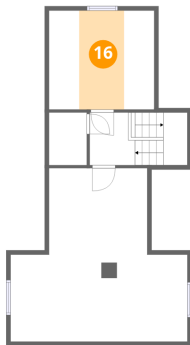
15 Floor 3 - Stairwell



Dimensions: 3'3" x 0'4"
Area: 38 sq. ft
Counted as living area: No

Heated: No
Finished: No
Enclosed: No
Contiguous: Yes
Permitted: No
Wet space: No
Addition: No
Conversion: No

16 Floor 3 - Bedroom



Dimensions: 12'1" x 11'5"
Area: 59 sq. ft
Counted as living area: Yes

Heated: Yes
Finished: Yes
Enclosed: Yes
Contiguous: Yes
Permitted: Yes
Wet space: No
Addition: No
Conversion: No