

Home data report

**15105 Camelview Drive, Fountain Hills, Maricopa County,
Arizona, United States, 85268**



Total Area: 7331 sq. ft

1st Floor: 2946 sq. ft, 2nd Floor: 4385 sq. ft


Excluded: Storage 36 sq. ft, Covered patio 192 sq. ft, Utility 44 sq. ft, Walls: 403 sq. ft

Property summary



Home data report

**15105 Camelview Drive, Fountain Hills, Maricopa County,
Arizona, United States, 85268**

 **1**
Half baths

 **3**
Garages

Home data report

15105 Camelview Drive, Fountain Hills, Maricopa County, Arizona, United States, 85268



Room dimensions

Floor 1

Total:2946sqft

Excluded: 228sqft

#		Dimensions	sqft	Counted as living area
1	Garage	20'0" x 44'2"	804 sq. ft	Yes
2	Bedroom	17'0" x 14'9"	251 sq. ft	Yes
3	Covered Patio	8'7" x 4'8"	40 sq. ft	No
4	Storage	5'2" x 7'0"	36 sq. ft	No
5	W.I.C.	4'7" x 7'0"	32 sq. ft	Yes
6	Covered Patio	8'8" x 17'8"	152 sq. ft	No
7	Recreation Room	43'5" x 17'5"	690 sq. ft	Yes
8	Room	10'2" x 7'6"	76 sq. ft	Yes
9	Bath	8'6" x 11'5"	94 sq. ft	Yes
10	Garage	30'4" x 23'0"	592 sq. ft	Yes
11	Kitchen	16'8" x 12'0"	155 sq. ft	Yes

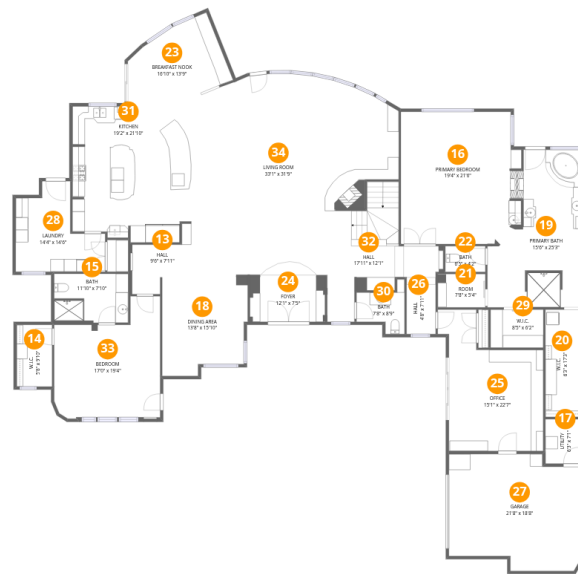
Home data report

**15105 Camelview Drive, Fountain Hills, Maricopa County,
Arizona, United States, 85268**

#		Dimensions	sqft	Counted as living area
12	Theatre Room	19'1" x 11'5"	200 sq. ft	Yes

Home data report

15105 Camelview Drive, Fountain Hills, Maricopa County, Arizona, United States, 85268



Room dimensions

Floor 2

Total:4385sqft Excluded: 44sqft

#		Dimensions	sqft	Counted as living area
13	Hall	9'6" x 7'11"	70 sq. ft	Yes
14	W.I.C.	5'8" x 9'10"	56 sq. ft	Yes
15	Bath	11'10" x 7'10"	92 sq. ft	Yes
16	Primary Bedroom	19'4" x 21'6"	385 sq. ft	Yes
17	Utility	6'3" x 7'1"	44 sq. ft	No
18	Dining Area	13'8" x 15'10"	198 sq. ft	Yes
19	Primary Bath	15'6" x 25'3"	318 sq. ft	Yes
20	W.I.C.	6'3" x 17'3"	107 sq. ft	Yes
21	Room	7'8" x 5'4"	41 sq. ft	Yes
22	Bath	6'5" x 4'2"	27 sq. ft	Yes
23	Breakfast Nook	16'10" x 13'9"	173 sq. ft	Yes

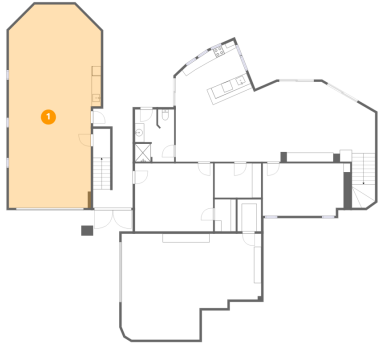
Home data report

**15105 Camelview Drive, Fountain Hills, Maricopa County,
Arizona, United States, 85268**

#		Dimensions	sqft	Counted as living area
24	Foyer	12'1" x 7'5"	89 sq. ft	Yes
25	Office	15'1" x 22'7"	280 sq. ft	Yes
26	Hall	4'8" x 7'11"	42 sq. ft	Yes
27	Garage	21'8" x 18'8"	366 sq. ft	Yes
28	Laundry	14'4" x 14'6"	149 sq. ft	Yes
29	W.I.C.	8'5" x 6'2"	52 sq. ft	Yes
30	Bath	7'8" x 8'9"	44 sq. ft	Yes
31	Kitchen	19'2" x 21'10"	397 sq. ft	Yes
32	Hall	17'11" x 12'1"	137 sq. ft	Yes
33	Bedroom	17'0" x 19'4"	272 sq. ft	Yes
34	Living Room	33'1" x 31'9"	952 sq. ft	Yes

15105 Camelview Drive, Fountain Hills, Maricopa County,
Arizona, United States, 85268

1 Floor 1 - Garage



Dimensions: 20'0" x 44'2"
Area: 804 sq. ft
Counted as living area: No

Heated: No
Finished: Yes
Enclosed: Yes
Contiguous: Yes
Permitted: Yes
Wet space: No
Addition: No
Conversion: No

2 Floor 1 - Bedroom



Dimensions: 17'0" x 14'9"
Area: 251 sq. ft
Counted as living area: Yes

Heated: Yes
Finished: Yes
Enclosed: Yes
Contiguous: Yes
Permitted: Yes
Wet space: No
Addition: No
Conversion: No

3 Floor 1 - Covered Patio



Dimensions: 8'7" x 4'8"
Area: 40 sq. ft
Counted as living area: No

Heated: No
Finished: No
Enclosed: No
Contiguous: Yes
Permitted: Yes
Wet space: No
Addition: No
Conversion: No

4 Floor 1 - Storage



Dimensions: 5'2" x 7'0"
Area: 36 sq. ft
Counted as living area: No

Heated: No
Finished: No
Enclosed: No
Contiguous: Yes
Permitted: Yes
Wet space: No
Addition: No
Conversion: No

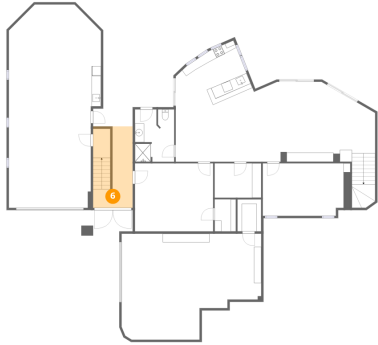
5 Floor 1 - W.I.C.



Dimensions: 4'7" x 7'0"
Area: 32 sq. ft
Counted as living area: Yes

Heated: Yes
Finished: Yes
Enclosed: Yes
Contiguous: Yes
Permitted: Yes
Wet space: No
Addition: No
Conversion: No

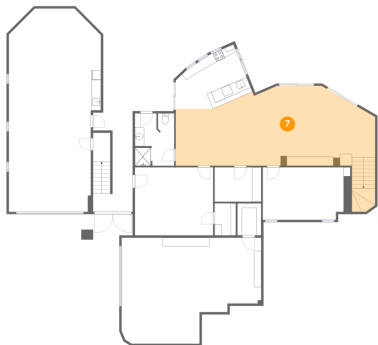
6 Floor 1 - Covered Patio



Dimensions: 8'8" x 17'8"
Area: 152 sq. ft
Counted as living area: No

Heated: No
Finished: No
Enclosed: No
Contiguous: Yes
Permitted: Yes
Wet space: No
Addition: No
Conversion: No

7 Floor 1 - Recreation Room



Dimensions: 43'5" x 17'5"
Area: 690 sq. ft
Counted as living area: Yes

Heated: Yes
Finished: Yes
Enclosed: Yes
Contiguous: Yes
Permitted: Yes
Wet space: No
Addition: No
Conversion: No

8 Floor 1 - Room



Dimensions: 10'2" x 7'6"
Area: 76 sq. ft
Counted as living area: Yes

Heated: Yes
Finished: Yes
Enclosed: Yes
Contiguous: Yes
Permitted: Yes
Wet space: No
Addition: No
Conversion: No

15105 Camelview Drive, Fountain Hills, Maricopa County,
Arizona, United States, 85268

9 Floor 1 - Bath



Dimensions: 8'6" x 11'5"
Area: 94 sq. ft
Counted as living area: Yes

Heated: Yes
Finished: Yes
Enclosed: Yes
Contiguous: Yes
Permitted: Yes
Wet space: Yes
Addition: No
Conversion: No

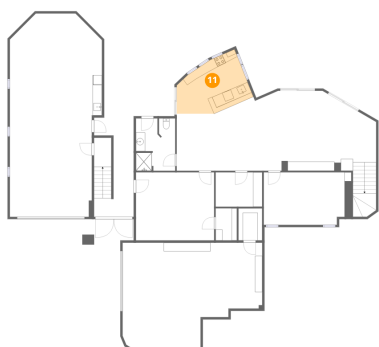
10 Floor 1 - Garage



Dimensions: 30'4" x 23'0"
Area: 592 sq. ft
Counted as living area: No

Heated: No
Finished: Yes
Enclosed: Yes
Contiguous: Yes
Permitted: Yes
Wet space: No
Addition: No
Conversion: No

11 Floor 1 - Kitchen



Dimensions: 16'8" x 12'0"
Area: 155 sq. ft
Counted as living area: Yes

Heated: Yes
Finished: Yes
Enclosed: Yes
Contiguous: Yes
Permitted: Yes
Wet space: No
Addition: No
Conversion: No

15105 Camelview Drive, Fountain Hills, Maricopa County,
Arizona, United States, 85268

12 Floor 1 - Theatre Room



Dimensions: 19'1" x 11'5"
Area: 200 sq. ft
Counted as living area: Yes

Heated: Yes
Finished: Yes
Enclosed: Yes
Contiguous: Yes
Permitted: Yes
Wet space: No
Addition: No
Conversion: No

13 Floor 2 - Hall



Dimensions: 9'6" x 7'11"
Area: 70 sq. ft
Counted as living area: Yes

Heated: Yes
Finished: Yes
Enclosed: Yes
Contiguous: Yes
Permitted: Yes
Wet space: No
Addition: No
Conversion: No

14 Floor 2 - W.I.C.



Dimensions: 5'8" x 9'10"
Area: 56 sq. ft
Counted as living area: Yes

Heated: Yes
Finished: Yes
Enclosed: Yes
Contiguous: Yes
Permitted: Yes
Wet space: No
Addition: No
Conversion: No

15105 Camelview Drive, Fountain Hills, Maricopa County,
Arizona, United States, 85268

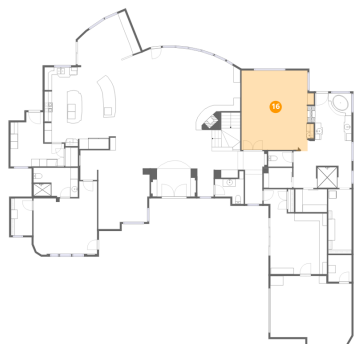
15 Floor 2 - Bath



Dimensions: 11'10" x 7'10"
Area: 92 sq. ft
Counted as living area: Yes

Heated: Yes
Finished: Yes
Enclosed: Yes
Contiguous: Yes
Permitted: Yes
Wet space: Yes
Addition: No
Conversion: No

16 Floor 2 - Primary Bedroom



Dimensions: 19'4" x 21'6"
Area: 385 sq. ft
Counted as living area: Yes

Heated: Yes
Finished: Yes
Enclosed: Yes
Contiguous: Yes
Permitted: Yes
Wet space: No
Addition: No
Conversion: No

17 Floor 2 - Utility

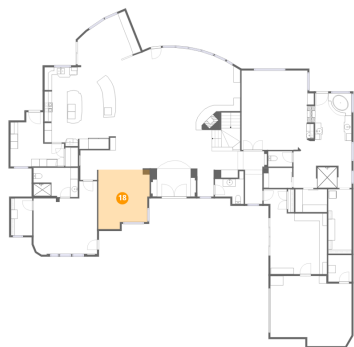


Dimensions: 6'3" x 7'1"
Area: 44 sq. ft
Counted as living area: No

Heated: Yes
Finished: No
Enclosed: Yes
Contiguous: Yes
Permitted: Yes
Wet space: No
Addition: No
Conversion: No

15105 Camelview Drive, Fountain Hills, Maricopa County,
Arizona, United States, 85268

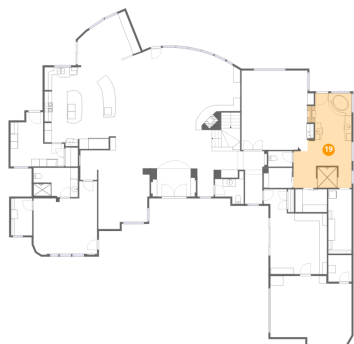
18 Floor 2 - Dining Area



Dimensions: 13'8" x 15'10"
Area: 198 sq. ft
Counted as living area: Yes

Heated: Yes
Finished: Yes
Enclosed: Yes
Contiguous: Yes
Permitted: Yes
Wet space: No
Addition: No
Conversion: No

19 Floor 2 - Primary Bath



Dimensions: 15'6" x 25'3"
Area: 318 sq. ft
Counted as living area: Yes

Heated: Yes
Finished: Yes
Enclosed: Yes
Contiguous: Yes
Permitted: Yes
Wet space: Yes
Addition: No
Conversion: No

20 Floor 2 - W.I.C.



Dimensions: 6'3" x 17'3"
Area: 107 sq. ft
Counted as living area: Yes

Heated: Yes
Finished: Yes
Enclosed: Yes
Contiguous: Yes
Permitted: Yes
Wet space: No
Addition: No
Conversion: No

15105 Camelview Drive, Fountain Hills, Maricopa County, Arizona, United States, 85268

21 Floor 2 - Room



Dimensions: 7'8" x 5'4"
Area: 41 sq. ft
Counted as living area: Yes

Heated: Yes
Finished: Yes
Enclosed: Yes
Contiguous: Yes
Permitted: Yes
Wet space: No
Addition: No
Conversion: No

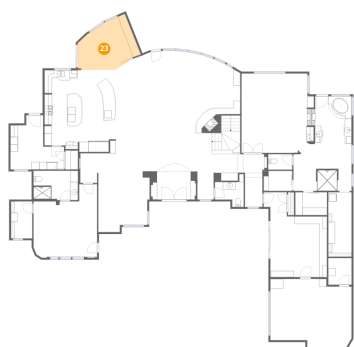
22 Floor 2 - Bath



Dimensions: 6'5" x 4'2"
Area: 27 sq. ft
Counted as living area: Yes

Heated: Yes
Finished: Yes
Enclosed: Yes
Contiguous: Yes
Permitted: Yes
Wet space: Yes
Addition: No
Conversion: No

23 Floor 2 - Breakfast Nook

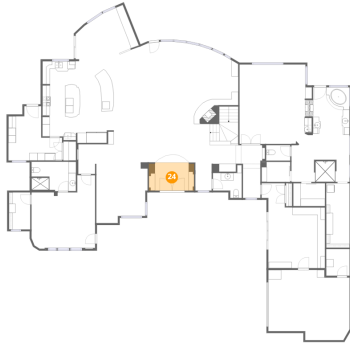


Dimensions: 16'10" x 13'9"
Area: 173 sq. ft
Counted as living area: Yes

Heated: Yes
Finished: Yes
Enclosed: Yes
Contiguous: Yes
Permitted: Yes
Wet space: No
Addition: No
Conversion: No

15105 Camelview Drive, Fountain Hills, Maricopa County,
Arizona, United States, 85268

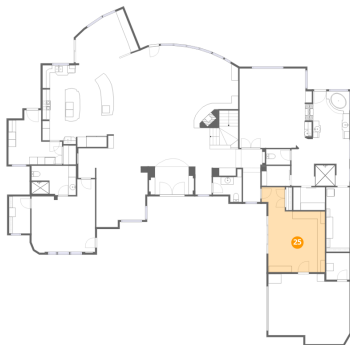
24 Floor 2 - Foyer



Dimensions: 12'1" x 7'5"
Area: 89 sq. ft
Counted as living area: Yes

Heated: Yes
Finished: Yes
Enclosed: Yes
Contiguous: Yes
Permitted: Yes
Wet space: No
Addition: No
Conversion: No

25 Floor 2 - Office



Dimensions: 15'1" x 22'7"
Area: 280 sq. ft
Counted as living area: Yes

Heated: Yes
Finished: Yes
Enclosed: Yes
Contiguous: Yes
Permitted: Yes
Wet space: No
Addition: No
Conversion: No

26 Floor 2 - Hall

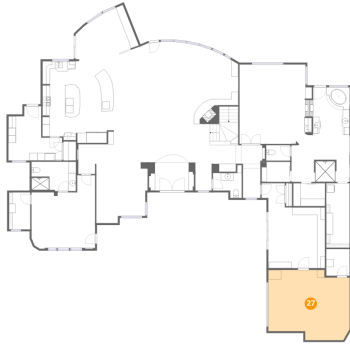


Dimensions: 4'8" x 7'11"
Area: 42 sq. ft
Counted as living area: Yes

Heated: Yes
Finished: Yes
Enclosed: Yes
Contiguous: Yes
Permitted: Yes
Wet space: No
Addition: No
Conversion: No

15105 Camelview Drive, Fountain Hills, Maricopa County,
Arizona, United States, 85268

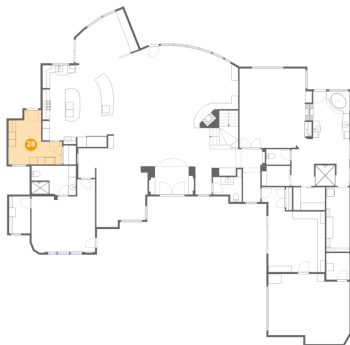
27 Floor 2 - Garage



Dimensions: 21'8" x 18'8"
Area: 366 sq. ft
Counted as living area: No

Heated: No
Finished: Yes
Enclosed: Yes
Contiguous: Yes
Permitted: Yes
Wet space: No
Addition: No
Conversion: No

28 Floor 2 - Laundry



Dimensions: 14'4" x 14'6"
Area: 149 sq. ft
Counted as living area: Yes

Heated: Yes
Finished: Yes
Enclosed: Yes
Contiguous: Yes
Permitted: Yes
Wet space: No
Addition: No
Conversion: No

29 Floor 2 - W.I.C.



Dimensions: 8'5" x 6'2"
Area: 52 sq. ft
Counted as living area: Yes

Heated: Yes
Finished: Yes
Enclosed: Yes
Contiguous: Yes
Permitted: Yes
Wet space: No
Addition: No
Conversion: No

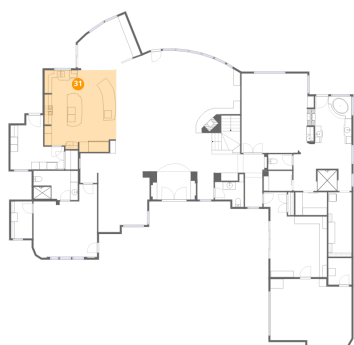
30 Floor 2 - Bath



Dimensions: 7'8" x 8'9"
Area: 44 sq. ft
Counted as living area: Yes

Heated: Yes
Finished: Yes
Enclosed: Yes
Contiguous: Yes
Permitted: Yes
Wet space: Yes
Addition: No
Conversion: No

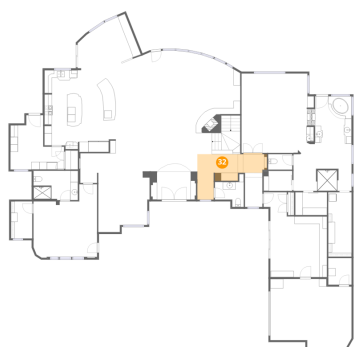
31 Floor 2 - Kitchen



Dimensions: 19'2" x 21'10"
Area: 397 sq. ft
Counted as living area: Yes

Heated: Yes
Finished: Yes
Enclosed: Yes
Contiguous: Yes
Permitted: Yes
Wet space: No
Addition: No
Conversion: No

32 Floor 2 - Hall

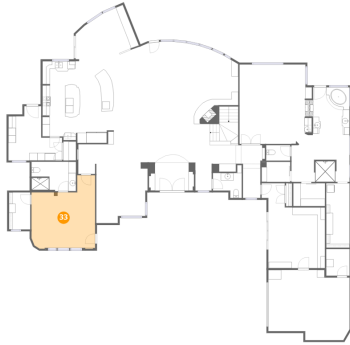


Dimensions: 17'11" x 12'1"
Area: 137 sq. ft
Counted as living area: Yes

Heated: Yes
Finished: Yes
Enclosed: Yes
Contiguous: Yes
Permitted: Yes
Wet space: No
Addition: No
Conversion: No

15105 Camelview Drive, Fountain Hills, Maricopa County,
Arizona, United States, 85268

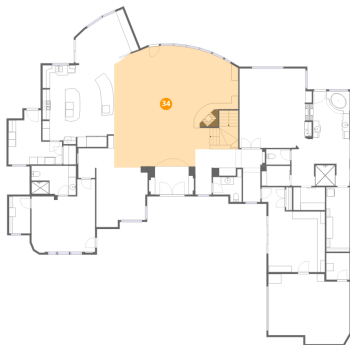
33 Floor 2 - Bedroom



Dimensions: 17'0" x 19'4"
Area: 272 sq. ft
Counted as living area: Yes

Heated: Yes
Finished: Yes
Enclosed: Yes
Contiguous: Yes
Permitted: Yes
Wet space: No
Addition: No
Conversion: No

34 Floor 2 - Living Room



Dimensions: 33'1" x 31'9"
Area: 952 sq. ft
Counted as living area: Yes

Heated: Yes
Finished: Yes
Enclosed: Yes
Contiguous: Yes
Permitted: Yes
Wet space: No
Addition: No
Conversion: No