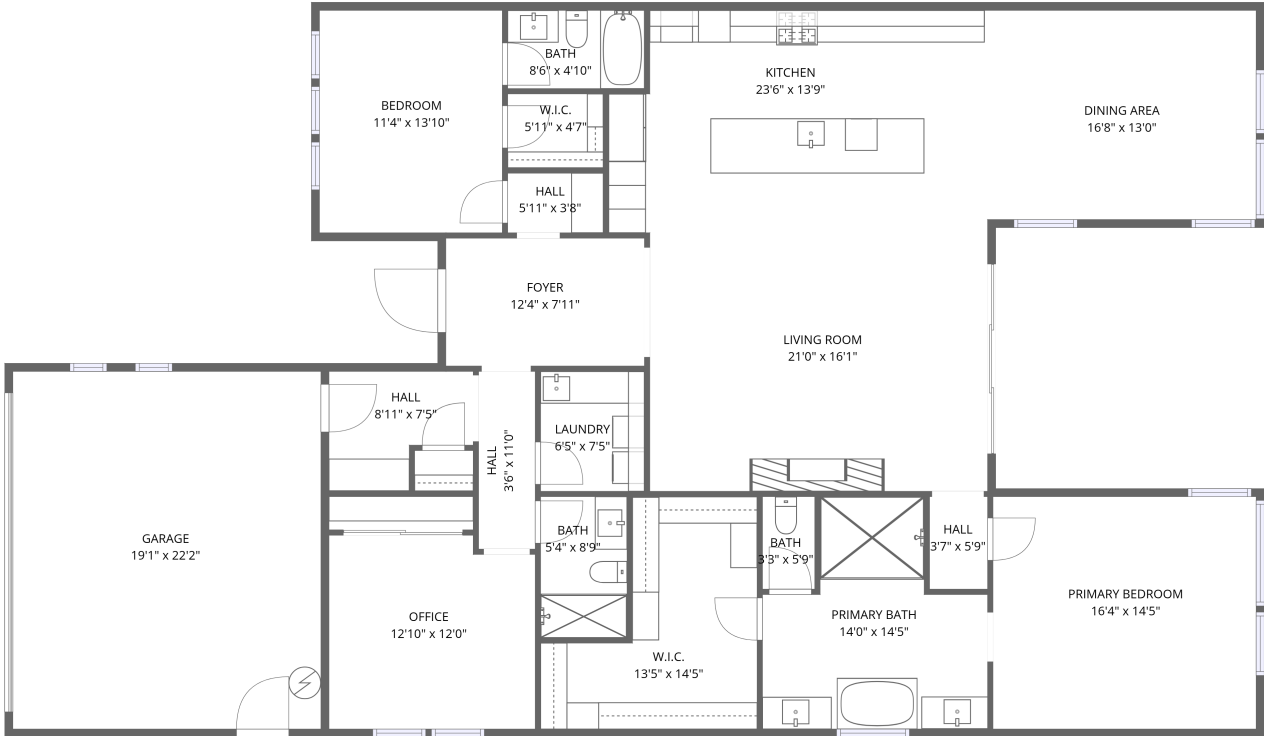


Home data report

14530 N Adero Canyon Dr, Fountain Hills, Maricopa County,
Arizona, United States, 85268



1st floor


Total Area: 2226 sq. ft

1st Floor: 2226 sq. ft

Excluded: Garage 424 sq. ft, Walls: 158 sq. ft

Property summary

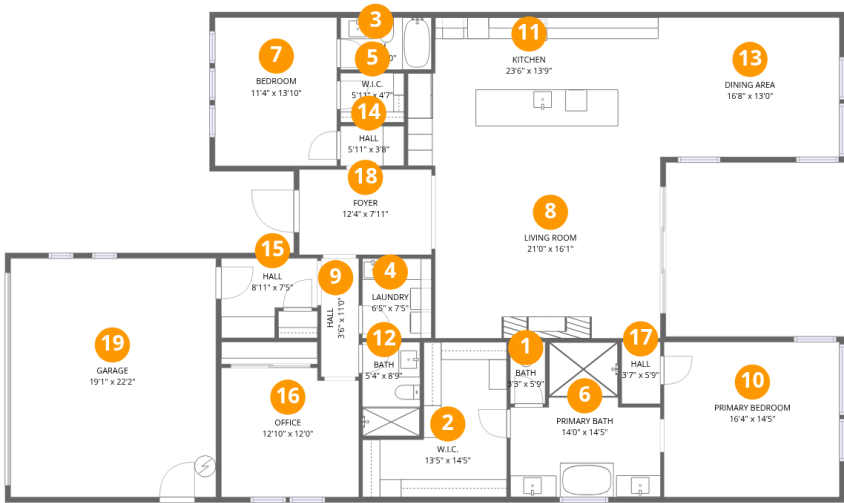
 1 Floors

 2 Bedrooms

 3 Bathrooms

 1 Garages

14530 N Adero Canyon Dr, Fountain Hills, Maricopa County, Arizona, United States, 85268



Room dimensions

Floor 1 Total:2226sqft Excluded: 424sqft

| # | | Dimensions | sqft | Counted as living area |
|----|-----------------|----------------|------------|------------------------|
| 1 | Bath | 3'3" x 5'9" | 19 sq. ft | Yes |
| 2 | W.I.C. | 13'5" x 14'5" | 142 sq. ft | Yes |
| 3 | Bath | 8'6" x 4'10" | 41 sq. ft | Yes |
| 4 | Laundry | 6'5" x 7'5" | 48 sq. ft | Yes |
| 5 | W.I.C. | 5'11" x 4'7" | 27 sq. ft | Yes |
| 6 | Primary Bath | 14'0" x 14'5" | 156 sq. ft | Yes |
| 7 | Bedroom | 11'4" x 13'10" | 157 sq. ft | Yes |
| 8 | Living Room | 21'0" x 16'1" | 336 sq. ft | Yes |
| 9 | Hall | 3'6" x 11'0" | 39 sq. ft | Yes |
| 10 | Primary Bedroom | 16'4" x 14'5" | 236 sq. ft | Yes |
| 11 | Kitchen | 23'6" x 13'9" | 311 sq. ft | Yes |

Home data report

**14530 N Adero Canyon Dr, Fountain Hills, Maricopa County,
Arizona, United States, 85268**

| # | | Dimensions | sqft | Counted as living area |
|----|-------------|----------------|------------|------------------------|
| 12 | Bath | 5'4" x 8'9" | 47 sq. ft | Yes |
| 13 | Dining Area | 16'8" x 13'0" | 216 sq. ft | Yes |
| 14 | Hall | 5'11" x 3'8" | 22 sq. ft | Yes |
| 15 | Hall | 8'11" x 7'5" | 55 sq. ft | Yes |
| 16 | Office | 12'10" x 12'0" | 149 sq. ft | Yes |
| 17 | Hall | 3'7" x 5'9" | 21 sq. ft | Yes |
| 18 | Foyer | 12'4" x 7'11" | 98 sq. ft | Yes |
| 19 | Garage | 19'1" x 22'2" | 424 sq. ft | No |

14530 N Adero Canyon Dr, Fountain Hills, Maricopa County,
Arizona, United States, 85268

1 Floor 1 - Bath



Dimensions: 3'3" x 5'9"
Area: 19 sq. ft
Counted as living area: Yes

Heated: Yes
Finished: Yes
Enclosed: Yes
Contiguous: Yes
Permitted: Yes
Wet space: Yes
Addition: No
Conversion: No

2 Floor 1 - W.I.C.



Dimensions: 13'5" x 14'5"
Area: 142 sq. ft
Counted as living area: Yes

Heated: Yes
Finished: Yes
Enclosed: Yes
Contiguous: Yes
Permitted: Yes
Wet space: No
Addition: No
Conversion: No

14530 N Adero Canyon Dr, Fountain Hills, Maricopa County,
Arizona, United States, 85268

3 Floor 1 - Bath



Dimensions: 8'6" x 4'10"
Area: 41 sq. ft
Counted as living area: Yes

Heated: Yes
Finished: Yes
Enclosed: Yes
Contiguous: Yes
Permitted: Yes
Wet space: Yes
Addition: No
Conversion: No

4 Floor 1 - Laundry



Dimensions: 6'5" x 7'5"
Area: 48 sq. ft
Counted as living area: Yes

Heated: Yes
Finished: Yes
Enclosed: Yes
Contiguous: Yes
Permitted: Yes
Wet space: No
Addition: No
Conversion: No

5 Floor 1 - W.I.C.



Dimensions: 5'11" x 4'7"
Area: 27 sq. ft
Counted as living area: Yes

Heated: Yes
Finished: Yes
Enclosed: Yes
Contiguous: Yes
Permitted: Yes
Wet space: No
Addition: No
Conversion: No

14530 N Adero Canyon Dr, Fountain Hills, Maricopa County,
Arizona, United States, 85268

6 Floor 1 - Primary Bath



Dimensions: 14'0" x 14'5"
Area: 156 sq. ft
Counted as living area: Yes

Heated: Yes
Finished: Yes
Enclosed: Yes
Contiguous: Yes
Permitted: Yes
Wet space: Yes
Addition: No
Conversion: No

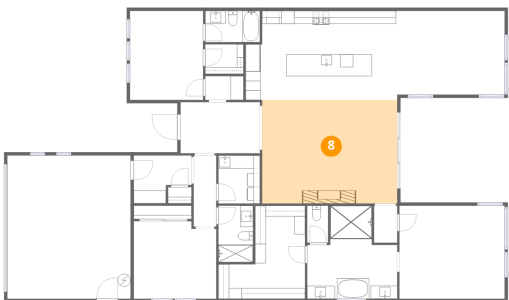
7 Floor 1 - Bedroom



Dimensions: 11'4" x 13'10"
Area: 157 sq. ft
Counted as living area: Yes

Heated: Yes
Finished: Yes
Enclosed: Yes
Contiguous: Yes
Permitted: Yes
Wet space: No
Addition: No
Conversion: No

8 Floor 1 - Living Room



Dimensions: 21'0" x 16'1"
Area: 336 sq. ft
Counted as living area: Yes

Heated: Yes
Finished: Yes
Enclosed: Yes
Contiguous: Yes
Permitted: Yes
Wet space: No
Addition: No
Conversion: No

14530 N Adero Canyon Dr, Fountain Hills, Maricopa County,
Arizona, United States, 85268

9 Floor 1 - Hall



Dimensions: 3'6" x 11'0"
Area: 39 sq. ft
Counted as living area: Yes

Heated: Yes
Finished: Yes
Enclosed: Yes
Contiguous: Yes
Permitted: Yes
Wet space: No
Addition: No
Conversion: No

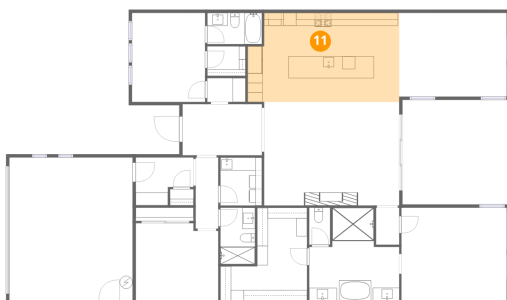
10 Floor 1 - Primary Bedroom



Dimensions: 16'4" x 14'5"
Area: 236 sq. ft
Counted as living area: Yes

Heated: Yes
Finished: Yes
Enclosed: Yes
Contiguous: Yes
Permitted: Yes
Wet space: No
Addition: No
Conversion: No

11 Floor 1 - Kitchen



Dimensions: 23'6" x 13'9"
Area: 311 sq. ft
Counted as living area: Yes

Heated: Yes
Finished: Yes
Enclosed: Yes
Contiguous: Yes
Permitted: Yes
Wet space: No
Addition: No
Conversion: No

Home data report

14530 N Adero Canyon Dr, Fountain Hills, Maricopa County,
Arizona, United States, 85268

12 Floor 1 - Bath



Dimensions: 5'4" x 8'9"
Area: 47 sq. ft
Counted as living area: Yes

Heated: Yes
Finished: Yes
Enclosed: Yes
Contiguous: Yes
Permitted: Yes
Wet space: Yes
Addition: No
Conversion: No

13 Floor 1 - Dining Area



Dimensions: 16'8" x 13'0"
Area: 216 sq. ft
Counted as living area: Yes

Heated: Yes
Finished: Yes
Enclosed: Yes
Contiguous: Yes
Permitted: Yes
Wet space: No
Addition: No
Conversion: No

14 Floor 1 - Hall



Dimensions: 5'11" x 3'8"
Area: 22 sq. ft
Counted as living area: Yes

Heated: Yes
Finished: Yes
Enclosed: Yes
Contiguous: Yes
Permitted: Yes
Wet space: No
Addition: No
Conversion: No

Home data report

14530 N Adero Canyon Dr, Fountain Hills, Maricopa County,
Arizona, United States, 85268

15 Floor 1 - Hall



Dimensions: 8'11" x 7'5"
Area: 55 sq. ft
Counted as living area: Yes

Heated: Yes
Finished: Yes
Enclosed: Yes
Contiguous: Yes
Permitted: Yes
Wet space: No
Addition: No
Conversion: No

16 Floor 1 - Office



Dimensions: 12'10" x 12'0"
Area: 149 sq. ft
Counted as living area: Yes

Heated: Yes
Finished: Yes
Enclosed: Yes
Contiguous: Yes
Permitted: Yes
Wet space: No
Addition: No
Conversion: No

17 Floor 1 - Hall



Dimensions: 3'7" x 5'9"
Area: 21 sq. ft
Counted as living area: Yes

Heated: Yes
Finished: Yes
Enclosed: Yes
Contiguous: Yes
Permitted: Yes
Wet space: No
Addition: No
Conversion: No

14530 N Adero Canyon Dr, Fountain Hills, Maricopa County,
Arizona, United States, 85268

18 Floor 1 - Foyer



Dimensions: 12'4" x 7'11"
Area: 98 sq. ft
Counted as living area: Yes

Heated: Yes
Finished: Yes
Enclosed: Yes
Contiguous: Yes
Permitted: Yes
Wet space: No
Addition: No
Conversion: No

19 Floor 1 - Garage



Dimensions: 19'1" x 22'2"
Area: 424 sq. ft
Counted as living area: No

Heated: No
Finished: No
Enclosed: Yes
Contiguous: Yes
Permitted: Yes
Wet space: No
Addition: No
Conversion: No