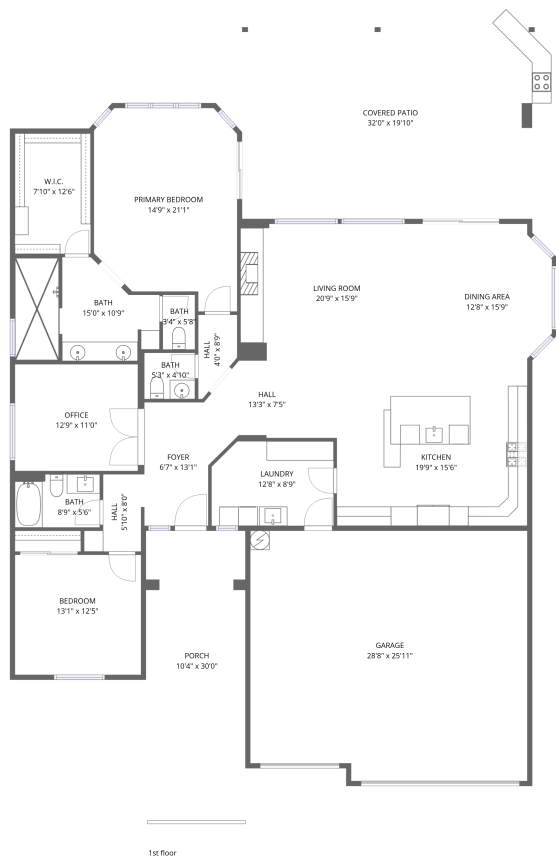


Home data report

4779 Nogales Way, Eloy, Pinal County, Arizona, United States, 85131



Total Area: 2133 sq. ft

1st Floor: 2133 sq. ft

Excluded: Garage 724 sq. ft, Porch 307 sq. ft, Covered patio 607 sq. ft, Walls: 152 sq. ft

Property summary

1 Floors

2 Bedrooms

2 Bathrooms

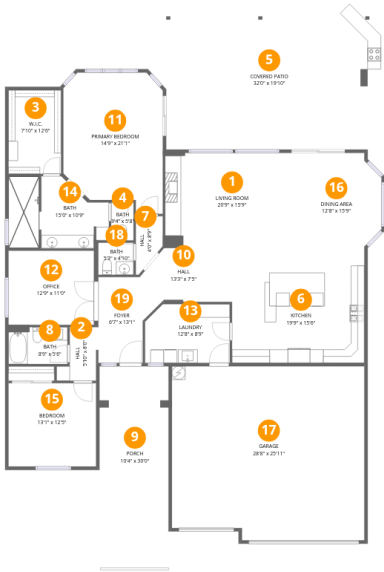
Home data report

4779 Nogales Way, Eloy, Pinal County, Arizona, United States, 85131

 **1**  
Half baths

 **1**  
Garages

4779 Nogales Way, Eloy, Pinal County, Arizona, United States, 85131



Room dimensions

Floor 1 Total:2133sqft   Excluded: 1638sqft

#		Dimensions	sqft	Counted as living area
1	Living Room	20'9" x 15'9"	310 sq. ft	Yes
2	Hall	5'10" x 8'0"	37 sq. ft	Yes
3	W.I.C.	7'10" x 12'6"	98 sq. ft	Yes
4	Bath	3'4" x 5'8"	19 sq. ft	Yes
5	Covered Patio	32'0" x 19'10"	607 sq. ft	No
6	Kitchen	19'9" x 15'6"	306 sq. ft	Yes
7	Hall	4'0" x 8'9"	27 sq. ft	Yes
8	Bath	8'9" x 5'6"	48 sq. ft	Yes
9	Porch	10'4" x 30'0"	307 sq. ft	No
10	Hall	13'3" x 7'5"	86 sq. ft	Yes
11	Primary Bedroom	14'9" x 21'1"	276 sq. ft	Yes

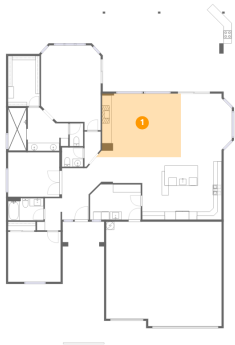
## Home data report

**4779 Nogales Way, Eloy, Pinal County, Arizona, United States,  
85131**

#		Dimensions	sqft	Counted as living area
12	Office	12'9" x 11'0"	141 sq. ft	Yes
13	Laundry	12'8" x 8'9"	107 sq. ft	Yes
14	Bath	15'0" x 10'9"	135 sq. ft	Yes
15	Bedroom	13'1" x 12'5"	162 sq. ft	Yes
16	Dining Area	12'8" x 15'9"	185 sq. ft	Yes
17	Garage	28'8" x 25'11"	724 sq. ft	No
18	Bath	5'3" x 4'10"	25 sq. ft	Yes
19	Foyer	6'7" x 13'1"	85 sq. ft	Yes

4779 Nogales Way, Eloy, Pinal County, Arizona, United States, 85131

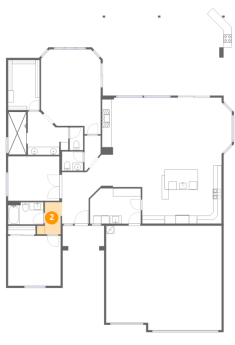
1 Floor 1 - Living Room



Dimensions: 20'9" x 15'9"  
Area: 310 sq. ft  
Counted as living area: Yes

Heated: Yes  
Finished: Yes  
Enclosed: Yes  
Contiguous: Yes  
Permitted: Yes  
Wet space: No  
Addition: No  
Conversion: No

2 Floor 1 - Hall

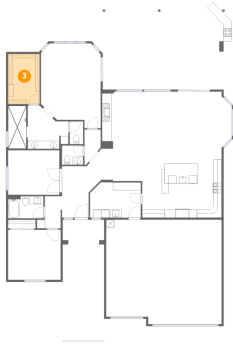


Dimensions: 5'10" x 8'0"  
Area: 37 sq. ft  
Counted as living area: Yes

Heated: Yes  
Finished: Yes  
Enclosed: Yes  
Contiguous: Yes  
Permitted: Yes  
Wet space: No  
Addition: No  
Conversion: No

4779 Nogales Way, Eloy, Pinal County, Arizona, United States, 85131

### 3 Floor 1 - W.I.C.



Dimensions: 7'10" x 12'6"  
Area: 98 sq. ft  
Counted as living area: Yes

Heated: Yes  
Finished: Yes  
Enclosed: Yes  
Contiguous: Yes  
Permitted: Yes  
Wet space: No  
Addition: No  
Conversion: No

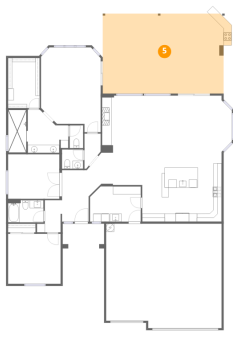
### 4 Floor 1 - Bath



Dimensions: 3'4" x 5'8"  
Area: 19 sq. ft  
Counted as living area: Yes

Heated: Yes  
Finished: Yes  
Enclosed: Yes  
Contiguous: Yes  
Permitted: Yes  
Wet space: No  
Addition: No  
Conversion: No

### 5 Floor 1 - Covered Patio

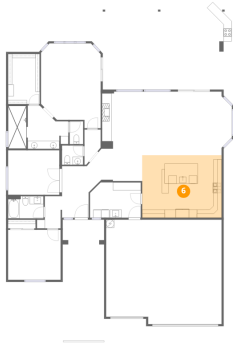


Dimensions: 32'0" x 19'10"  
Area: 607 sq. ft  
Counted as living area: No

Heated: No  
Finished: No  
Enclosed: No  
Contiguous: Yes  
Permitted: Yes  
Wet space: No  
Addition: No  
Conversion: No

4779 Nogales Way, Eloy, Pinal County, Arizona, United States, 85131

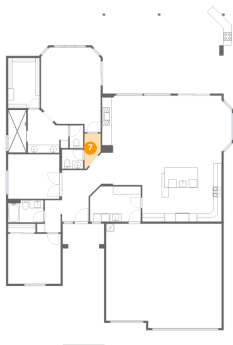
## 6 Floor 1 - Kitchen



Dimensions: 19'9" x 15'6"  
Area: 306 sq. ft  
Counted as living area: Yes

Heated: Yes  
Finished: Yes  
Enclosed: Yes  
Contiguous: Yes  
Permitted: Yes  
Wet space: No  
Addition: No  
Conversion: No

## 7 Floor 1 - Hall



Dimensions: 4'0" x 8'9"  
Area: 27 sq. ft  
Counted as living area: Yes

Heated: Yes  
Finished: Yes  
Enclosed: Yes  
Contiguous: Yes  
Permitted: Yes  
Wet space: No  
Addition: No  
Conversion: No

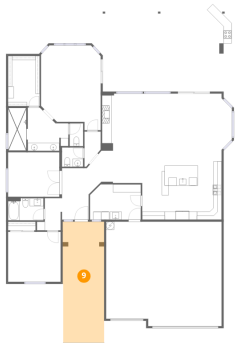
## 8 Floor 1 - Bath



Dimensions: 8'9" x 5'6"  
Area: 48 sq. ft  
Counted as living area: Yes

Heated: Yes  
Finished: Yes  
Enclosed: Yes  
Contiguous: Yes  
Permitted: Yes  
Wet space: Yes  
Addition: No  
Conversion: No

9 Floor 1 - Porch



Dimensions: 10'4" x 30'0"  
Area: 307 sq. ft  
Counted as living area: No

Heated: No  
Finished: No  
Enclosed: No  
Contiguous: Yes  
Permitted: Yes  
Wet space: No  
Addition: No  
Conversion: No

10 Floor 1 - Hall



Dimensions: 13'3" x 7'5"  
Area: 86 sq. ft  
Counted as living area: Yes

Heated: Yes  
Finished: Yes  
Enclosed: Yes  
Contiguous: Yes  
Permitted: Yes  
Wet space: No  
Addition: No  
Conversion: No

11 Floor 1 - Primary Bedroom



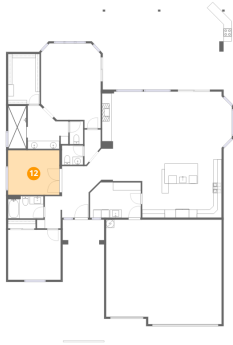
Dimensions: 14'9" x 21'1"  
Area: 276 sq. ft  
Counted as living area: Yes

Heated: Yes  
Finished: Yes  
Enclosed: Yes  
Contiguous: Yes  
Permitted: Yes  
Wet space: No  
Addition: No  
Conversion: No



4779 Nogales Way, Eloy, Pinal County, Arizona, United States, 85131

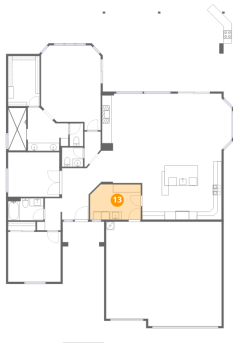
## 12 Floor 1 - Office



Dimensions: 12'9" x 11'0"  
Area: 141 sq. ft  
Counted as living area: Yes

Heated: Yes  
Finished: Yes  
Enclosed: Yes  
Contiguous: Yes  
Permitted: Yes  
Wet space: No  
Addition: No  
Conversion: No

## 13 Floor 1 - Laundry



Dimensions: 12'8" x 8'9"  
Area: 107 sq. ft  
Counted as living area: Yes

Heated: Yes  
Finished: Yes  
Enclosed: Yes  
Contiguous: Yes  
Permitted: Yes  
Wet space: No  
Addition: No  
Conversion: No

## 14 Floor 1 - Bath

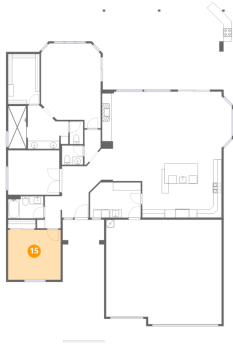


Dimensions: 15'0" x 10'9"  
Area: 135 sq. ft  
Counted as living area: Yes

Heated: Yes  
Finished: Yes  
Enclosed: Yes  
Contiguous: Yes  
Permitted: Yes  
Wet space: Yes  
Addition: No  
Conversion: No

4779 Nogales Way, Eloy, Pinal County, Arizona, United States, 85131

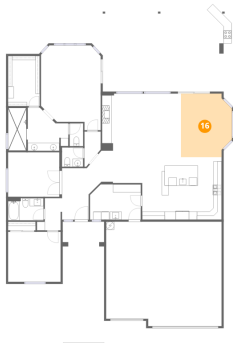
### 15 Floor 1 - Bedroom



Dimensions: 13'1" x 12'5"  
Area: 162 sq. ft  
Counted as living area: Yes

Heated: Yes  
Finished: Yes  
Enclosed: Yes  
Contiguous: Yes  
Permitted: Yes  
Wet space: No  
Addition: No  
Conversion: No

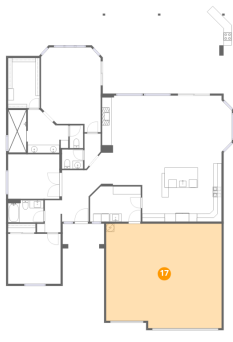
### 16 Floor 1 - Dining Area



Dimensions: 12'8" x 15'9"  
Area: 185 sq. ft  
Counted as living area: Yes

Heated: Yes  
Finished: Yes  
Enclosed: Yes  
Contiguous: Yes  
Permitted: Yes  
Wet space: No  
Addition: No  
Conversion: No

### 17 Floor 1 - Garage



Dimensions: 28'8" x 25'11"  
Area: 724 sq. ft  
Counted as living area: No

Heated: No  
Finished: No  
Enclosed: Yes  
Contiguous: Yes  
Permitted: Yes  
Wet space: No  
Addition: No  
Conversion: No

4779 Nogales Way, Eloy, Pinal County, Arizona, United States, 85131

18 Floor 1 - Bath



Dimensions: 5'3" x 4'10"  
Area: 25 sq. ft  
Counted as living area: Yes

Heated: Yes  
Finished: Yes  
Enclosed: Yes  
Contiguous: Yes  
Permitted: Yes  
Wet space: Yes  
Addition: No  
Conversion: No

19 Floor 1 - Foyer



Dimensions: 6'7" x 13'1"  
Area: 85 sq. ft  
Counted as living area: Yes

Heated: Yes  
Finished: Yes  
Enclosed: Yes  
Contiguous: Yes  
Permitted: Yes  
Wet space: No  
Addition: No  
Conversion: No