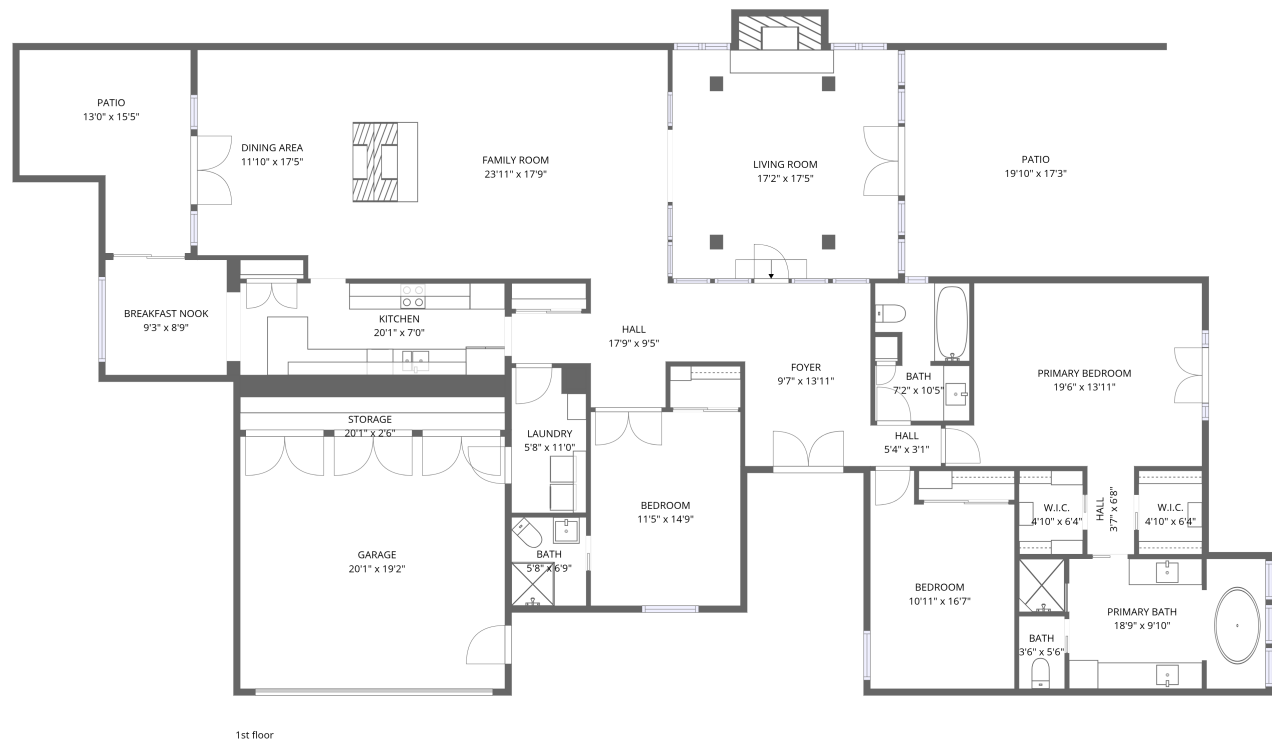


Home data report

5351 Questa Tierra Drive, Windsor Square, Phoenix, Maricopa County, Arizona, United States, 85012




Total Area: 2980 sq. ft

1st Floor: 2980 sq. ft

Excluded: Storage 51 sq. ft, Patio 504 sq. ft, Fireplace 19 sq. ft, Walls: 195 sq. ft

Property summary

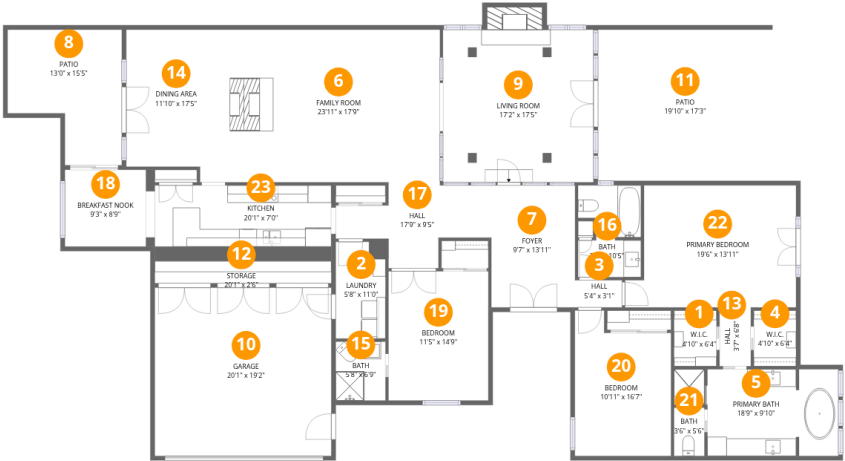
 1 Floors

 3 Bedrooms

 3 Bathrooms

 1 Garages

5351 Questa Tierra Drive, Windsor Square, Phoenix, Maricopa County, Arizona, United States, 85012



Room dimensions

Floor 1 Total:2980sqft Excluded: 574sqft

#		Dimensions	sqft	Counted as living area
1	W.I.C.	4'10" x 6'4"	31 sq. ft	Yes
2	Laundry	5'8" x 11'0"	59 sq. ft	Yes
3	Hall	5'4" x 3'1"	17 sq. ft	Yes
4	W.I.C.	4'10" x 6'4"	31 sq. ft	Yes
5	Primary Bath	18'9" x 9'10"	160 sq. ft	Yes
6	Family Room	23'11" x 17'9"	418 sq. ft	Yes
7	Foyer	9'7" x 13'11"	133 sq. ft	Yes
8	Patio	13'0" x 15'5"	162 sq. ft	No
9	Living Room	17'2" x 17'5"	314 sq. ft	Yes
10	Garage	20'1" x 19'2"	385 sq. ft	Yes
11	Patio	19'10" x 17'3"	342 sq. ft	No

Home data report

5351 Questa Tierra Drive, Windsor Square, Phoenix, Maricopa County, Arizona, United States, 85012

#		Dimensions	sqft	Counted as living area
12	Storage	20'1" x 2'6"	51 sq. ft	No
13	Hall	3'7" x 6'8"	24 sq. ft	Yes
14	Dining Area	11'10" x 17'5"	190 sq. ft	Yes
15	Bath	5'8" x 6'9"	38 sq. ft	Yes
16	Bath	7'2" x 10'5"	69 sq. ft	Yes
17	Hall	17'9" x 9'5"	113 sq. ft	Yes
18	Breakfast Nook	9'3" x 8'9"	81 sq. ft	Yes
19	Bedroom	11'5" x 14'9"	168 sq. ft	Yes
20	Bedroom	10'11" x 16'7"	162 sq. ft	Yes
21	Bath	3'6" x 5'6"	19 sq. ft	Yes
22	Primary Bedroom	19'6" x 13'11"	247 sq. ft	Yes
23	Kitchen	20'1" x 7'0"	140 sq. ft	Yes

5351 Questa Tierra Drive, Windsor Square, Phoenix, Maricopa County, Arizona, United States, 85012

1 Floor 1 - W.I.C.



Dimensions: 4'10" x 6'4"
Area: 31 sq. ft
Counted as living area: Yes

Heated: Yes
Finished: Yes
Enclosed: Yes
Contiguous: Yes
Permitted: Yes
Wet space: No
Addition: No
Conversion: No

2 Floor 1 - Laundry

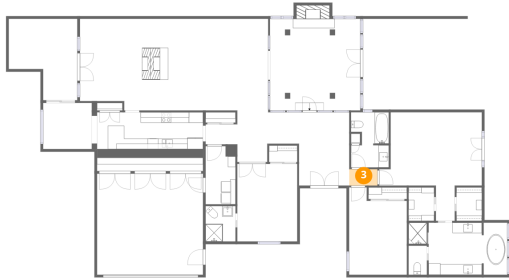


Dimensions: 5'8" x 11'0"
Area: 59 sq. ft
Counted as living area: Yes

Heated: Yes
Finished: Yes
Enclosed: Yes
Contiguous: Yes
Permitted: Yes
Wet space: No
Addition: No
Conversion: No

5351 Questa Tierra Drive, Windsor Square, Phoenix, Maricopa County, Arizona, United States, 85012

3 Floor 1 - Hall



Dimensions: 5'4" x 3'1"
Area: 17 sq. ft
Counted as living area: Yes

Heated: Yes
Finished: Yes
Enclosed: Yes
Contiguous: Yes
Permitted: Yes
Wet space: No
Addition: No
Conversion: No

4 Floor 1 - W.I.C.



Dimensions: 4'10" x 6'4"
Area: 31 sq. ft
Counted as living area: Yes

Heated: Yes
Finished: Yes
Enclosed: Yes
Contiguous: Yes
Permitted: Yes
Wet space: No
Addition: No
Conversion: No

5 Floor 1 - Primary Bath

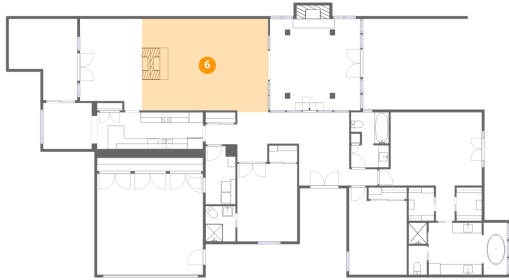


Dimensions: 18'9" x 9'10"
Area: 160 sq. ft
Counted as living area: Yes

Heated: Yes
Finished: Yes
Enclosed: Yes
Contiguous: Yes
Permitted: Yes
Wet space: Yes
Addition: No
Conversion: No

5351 Questa Tierra Drive, Windsor Square, Phoenix, Maricopa County, Arizona, United States, 85012

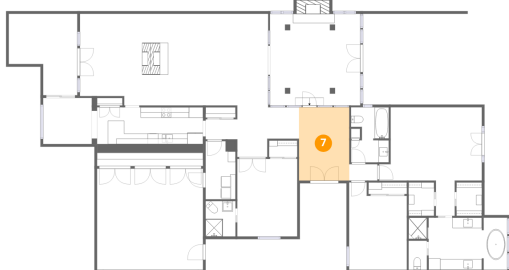
6 Floor 1 - Family Room



Dimensions: 23'11" x 17'9"
Area: 418 sq. ft
Counted as living area: Yes

Heated: Yes
Finished: Yes
Enclosed: Yes
Contiguous: Yes
Permitted: Yes
Wet space: No
Addition: No
Conversion: No

7 Floor 1 - Foyer



Dimensions: 9'7" x 13'11"
Area: 133 sq. ft
Counted as living area: Yes

Heated: Yes
Finished: Yes
Enclosed: Yes
Contiguous: Yes
Permitted: Yes
Wet space: No
Addition: No
Conversion: No

8 Floor 1 - Patio

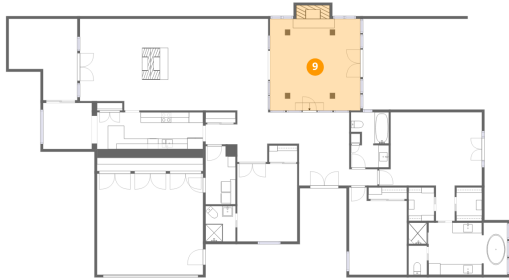


Dimensions: 13'0" x 15'5"
Area: 162 sq. ft
Counted as living area: No

Heated: No
Finished: No
Enclosed: No
Contiguous: Yes
Permitted: Yes
Wet space: No
Addition: No
Conversion: No

5351 Questa Tierra Drive, Windsor Square, Phoenix, Maricopa County, Arizona, United States, 85012

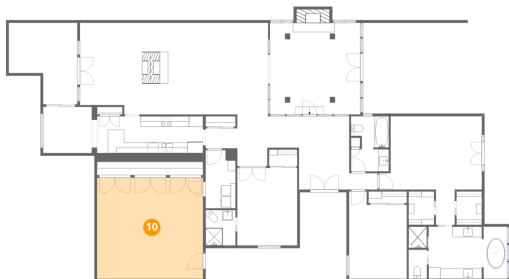
9 Floor 1 - Living Room



Dimensions: 17'2" x 17'5"
Area: 314 sq. ft
Counted as living area: Yes

Heated: Yes
Finished: Yes
Enclosed: Yes
Contiguous: Yes
Permitted: Yes
Wet space: No
Addition: No
Conversion: No

10 Floor 1 - Garage



Dimensions: 20'1" x 19'2"
Area: 385 sq. ft
Counted as living area: No

Heated: No
Finished: Yes
Enclosed: Yes
Contiguous: Yes
Permitted: Yes
Wet space: No
Addition: No
Conversion: No

11 Floor 1 - Patio

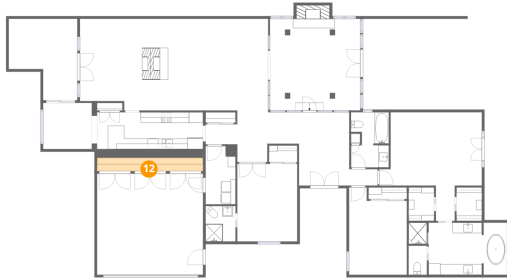


Dimensions: 19'10" x 17'3"
Area: 342 sq. ft
Counted as living area: No

Heated: No
Finished: No
Enclosed: No
Contiguous: Yes
Permitted: Yes
Wet space: No
Addition: No
Conversion: No

5351 Questa Tierra Drive, Windsor Square, Phoenix, Maricopa County, Arizona, United States, 85012

12 Floor 1 - Storage



Dimensions: 20'1" x 2'6"
Area: 51 sq. ft
Counted as living area: No

Heated: No
Finished: No
Enclosed: No
Contiguous: Yes
Permitted: Yes
Wet space: No
Addition: No
Conversion: No

13 Floor 1 - Hall



Dimensions: 3'7" x 6'8"
Area: 24 sq. ft
Counted as living area: Yes

Heated: Yes
Finished: Yes
Enclosed: Yes
Contiguous: Yes
Permitted: Yes
Wet space: No
Addition: No
Conversion: No

14 Floor 1 - Dining Area



Dimensions: 11'10" x 17'5"
Area: 190 sq. ft
Counted as living area: Yes

Heated: Yes
Finished: Yes
Enclosed: Yes
Contiguous: Yes
Permitted: Yes
Wet space: No
Addition: No
Conversion: No

5351 Questa Tierra Drive, Windsor Square, Phoenix, Maricopa County, Arizona, United States, 85012

15 Floor 1 - Bath



Dimensions: 5'8" x 6'9"
Area: 38 sq. ft
Counted as living area: Yes

Heated: Yes
Finished: Yes
Enclosed: Yes
Contiguous: Yes
Permitted: Yes
Wet space: Yes
Addition: No
Conversion: No

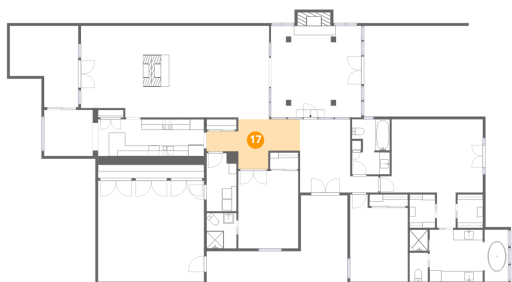
16 Floor 1 - Bath



Dimensions: 7'2" x 10'5"
Area: 69 sq. ft
Counted as living area: Yes

Heated: Yes
Finished: Yes
Enclosed: Yes
Contiguous: Yes
Permitted: Yes
Wet space: Yes
Addition: No
Conversion: No

17 Floor 1 - Hall



Dimensions: 17'9" x 9'5"
Area: 113 sq. ft
Counted as living area: Yes

Heated: Yes
Finished: Yes
Enclosed: Yes
Contiguous: Yes
Permitted: Yes
Wet space: No
Addition: No
Conversion: No

5351 Questa Tierra Drive, Windsor Square, Phoenix, Maricopa County, Arizona, United States, 85012

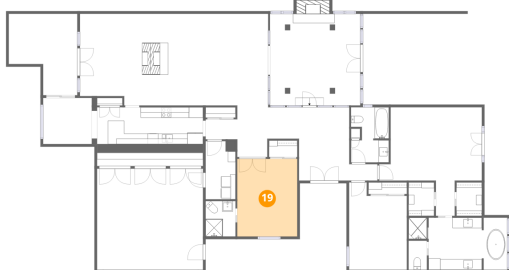
18 Floor 1 - Breakfast Nook



Dimensions: 9'3" x 8'9"
Area: 81 sq. ft
Counted as living area: Yes

Heated: Yes
Finished: Yes
Enclosed: Yes
Contiguous: Yes
Permitted: Yes
Wet space: No
Addition: No
Conversion: No

19 Floor 1 - Bedroom



Dimensions: 11'5" x 14'9"
Area: 168 sq. ft
Counted as living area: Yes

Heated: Yes
Finished: Yes
Enclosed: Yes
Contiguous: Yes
Permitted: Yes
Wet space: No
Addition: No
Conversion: No

20 Floor 1 - Bedroom



Dimensions: 10'11" x 16'7"
Area: 162 sq. ft
Counted as living area: Yes

Heated: Yes
Finished: Yes
Enclosed: Yes
Contiguous: Yes
Permitted: Yes
Wet space: No
Addition: No
Conversion: No

5351 Questa Tierra Drive, Windsor Square, Phoenix, Maricopa County, Arizona, United States, 85012

21 Floor 1 - Bath



Dimensions: 3'6" x 5'6"
Area: 19 sq. ft
Counted as living area: Yes

Heated: Yes
Finished: Yes
Enclosed: Yes
Contiguous: Yes
Permitted: Yes
Wet space: Yes
Addition: No
Conversion: No

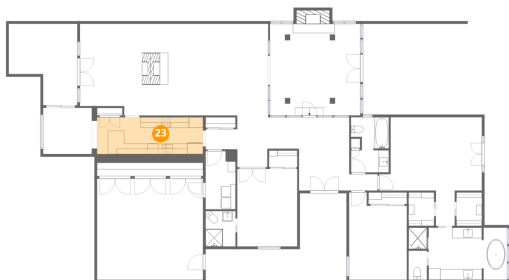
22 Floor 1 - Primary Bedroom



Dimensions: 19'6" x 13'11"
Area: 247 sq. ft
Counted as living area: Yes

Heated: Yes
Finished: Yes
Enclosed: Yes
Contiguous: Yes
Permitted: Yes
Wet space: No
Addition: No
Conversion: No

23 Floor 1 - Kitchen



Dimensions: 20'1" x 7'0"
Area: 140 sq. ft
Counted as living area: Yes

Heated: Yes
Finished: Yes
Enclosed: Yes
Contiguous: Yes
Permitted: Yes
Wet space: No
Addition: No
Conversion: No