

Home data report

1614 East Roma Avenue, Camelback East, Phoenix, Maricopa County, Arizona, United States, 85016



Total Area: 1663 sq. ft

1st Floor: 1663 sq. ft

Excluded: Storage 158 sq. ft, Utility 88 sq. ft, Patio 995 sq. ft, Porch 87 sq. ft, Carport 521 sq. ft, Fireplace 6 sq. ft, Walls: 142 sq. ft

Property summary

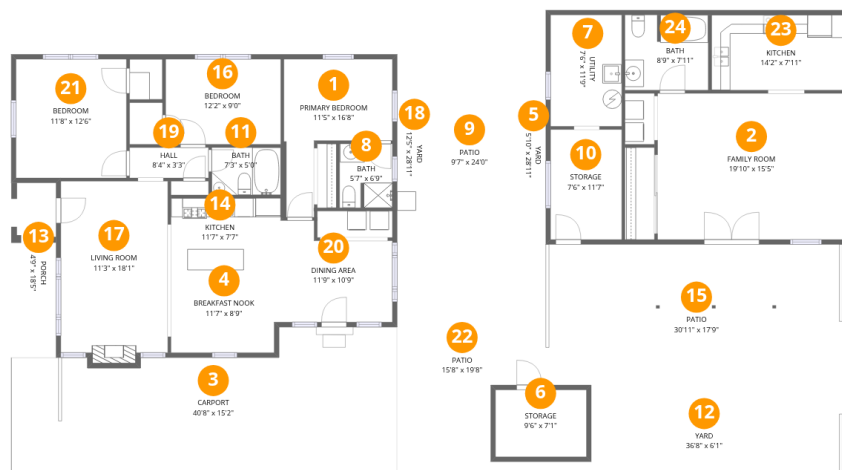
 **1** Floors

 **3** Bedrooms

 **3** Bathrooms

Home data report

1614 East Roma Avenue, Camelback East, Phoenix, Maricopa County, Arizona, United States, 85016



Room dimensions

Floor 1

Total:1663sqft

Excluded: 1855sqft

#		Dimensions	sqft	Counted as living area
1	Primary Bedroom	11'5" x 16'8"	124 sq. ft	Yes
2	Family Room	19'10" x 15'5"	306 sq. ft	Yes
3	Carport	40'8" x 15'2"	521 sq. ft	No
4	Breakfast Nook	11'7" x 8'9"	101 sq. ft	Yes
5	Yard	5'10" x 28'11"	103 sq. ft	No
6	Storage	9'6" x 7'1"	68 sq. ft	No
7	Utility	7'6" x 11'9"	88 sq. ft	No
8	Bath	5'7" x 6'9"	37 sq. ft	Yes
9	Patio	9'7" x 24'0"	207 sq. ft	No
10	Storage	7'6" x 11'7"	87 sq. ft	No
11	Bath	7'3" x 5'0"	36 sq. ft	Yes

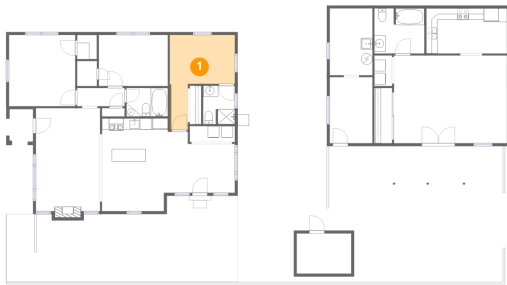
Home data report

1614 East Roma Avenue, Camelback East, Phoenix, Maricopa County, Arizona, United States, 85016

#		Dimensions	sqft	Counted as living area
12	Yard	36'8" x 6'1"	170 sq. ft	No
13	Porch	4'9" x 18'5"	87 sq. ft	No
14	Kitchen	11'7" x 7'7"	89 sq. ft	Yes
15	Patio	30'11" x 17'9"	532 sq. ft	No
16	Bedroom	12'2" x 9'0"	109 sq. ft	Yes
17	Living Room	11'3" x 18'1"	209 sq. ft	Yes
18	Yard	12'5" x 28'11"	143 sq. ft	No
19	Hall	8'4" x 3'3"	27 sq. ft	Yes
20	Dining Area	11'9" x 10'9"	108 sq. ft	Yes
21	Bedroom	11'8" x 12'6"	146 sq. ft	Yes
22	Patio	15'8" x 19'8"	255 sq. ft	No
23	Kitchen	14'2" x 7'11"	113 sq. ft	Yes
24	Bath	8'9" x 7'11"	69 sq. ft	Yes

1614 East Roma Avenue, Camelback East, Phoenix, Maricopa County, Arizona, United States, 85016

1 Floor 1 - Primary Bedroom



Dimensions: 11'5" x 16'8"
Area: 124 sq. ft
Counted as living area: Yes

Heated: Yes
Finished: Yes
Enclosed: Yes
Contiguous: Yes
Permitted: Yes
Wet space: No
Addition: No
Conversion: No

2 Floor 1 - Family Room

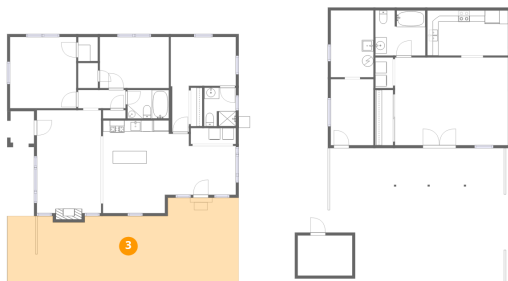


Dimensions: 19'10" x 15'5"
Area: 306 sq. ft
Counted as living area: Yes

Heated: Yes
Finished: Yes
Enclosed: Yes
Contiguous: Yes
Permitted: Yes
Wet space: No
Addition: No
Conversion: No

1614 East Roma Avenue, Camelback East, Phoenix, Maricopa County, Arizona, United States, 85016

3 Floor 1 - Carport



Dimensions: 40'8" x 15'2"
Area: 521 sq. ft
Counted as living area: No

Heated: No
Finished: Yes
Enclosed: No
Contiguous: Yes
Permitted: Yes
Wet space: No
Addition: No
Conversion: No

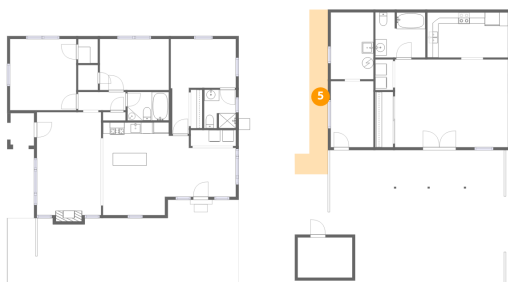
4 Floor 1 - Breakfast Nook



Dimensions: 11'7" x 8'9"
Area: 101 sq. ft
Counted as living area: Yes

Heated: Yes
Finished: Yes
Enclosed: Yes
Contiguous: Yes
Permitted: Yes
Wet space: No
Addition: No
Conversion: No

5 Floor 1 - Yard

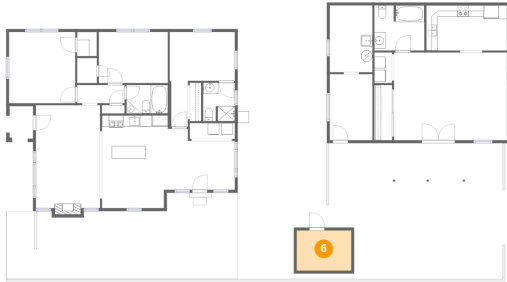


Dimensions: 5'10" x 28'11"
Area: 103 sq. ft
Counted as living area: No

Heated: No
Finished: No
Enclosed: No
Contiguous: Yes
Permitted: No
Wet space: No
Addition: No
Conversion: No

1614 East Roma Avenue, Camelback East, Phoenix, Maricopa County, Arizona, United States, 85016

6 Floor 1 - Storage



Dimensions: 9'6" x 7'1"
Area: 68 sq. ft
Counted as living area: No

Heated: No
Finished: No
Enclosed: No
Contiguous: Yes
Permitted: Yes
Wet space: No
Addition: No
Conversion: No

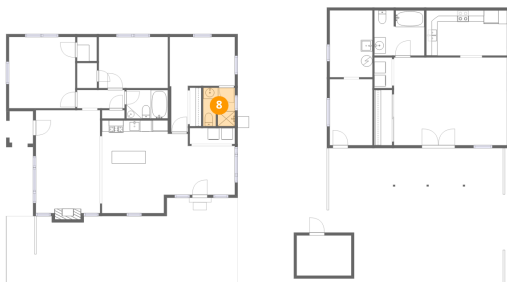
7 Floor 1 - Utility



Dimensions: 7'6" x 11'9"
Area: 88 sq. ft
Counted as living area: No

Heated: Yes
Finished: No
Enclosed: Yes
Contiguous: Yes
Permitted: Yes
Wet space: No
Addition: No
Conversion: No

8 Floor 1 - Bath

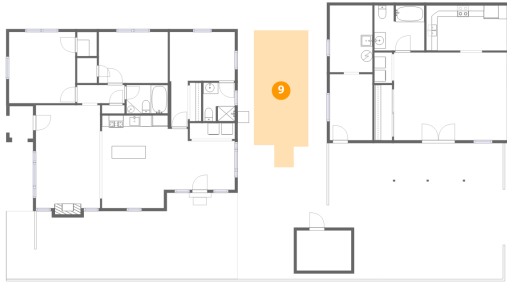


Dimensions: 5'7" x 6'9"
Area: 37 sq. ft
Counted as living area: Yes

Heated: Yes
Finished: Yes
Enclosed: Yes
Contiguous: Yes
Permitted: Yes
Wet space: Yes
Addition: No
Conversion: No

1614 East Roma Avenue, Camelback East, Phoenix, Maricopa County, Arizona, United States, 85016

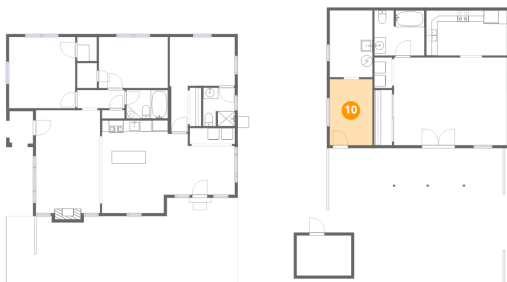
9 Floor 1 - Patio



Dimensions: 9'7" x 24'0"
Area: 207 sq. ft
Counted as living area: No

Heated: No
Finished: No
Enclosed: No
Contiguous: Yes
Permitted: Yes
Wet space: No
Addition: No
Conversion: No

10 Floor 1 - Storage



Dimensions: 7'6" x 11'7"
Area: 87 sq. ft
Counted as living area: No

Heated: No
Finished: No
Enclosed: No
Contiguous: Yes
Permitted: Yes
Wet space: No
Addition: No
Conversion: No

11 Floor 1 - Bath



Dimensions: 7'3" x 5'0"
Area: 36 sq. ft
Counted as living area: Yes

Heated: Yes
Finished: Yes
Enclosed: Yes
Contiguous: Yes
Permitted: Yes
Wet space: Yes
Addition: No
Conversion: No

1614 East Roma Avenue, Camelback East, Phoenix, Maricopa County, Arizona, United States, 85016

12 Floor 1 - Yard



Dimensions: 36'8" x 6'1"
Area: 170 sq. ft
Counted as living area: No

Heated: No
Finished: No
Enclosed: No
Contiguous: Yes
Permitted: No
Wet space: No
Addition: No
Conversion: No

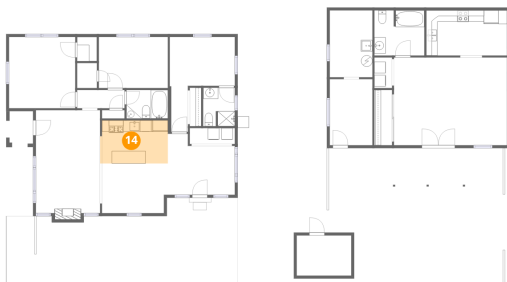
13 Floor 1 - Porch



Dimensions: 4'9" x 18'5"
Area: 87 sq. ft
Counted as living area: No

Heated: No
Finished: No
Enclosed: No
Contiguous: Yes
Permitted: Yes
Wet space: No
Addition: No
Conversion: No

14 Floor 1 - Kitchen



Dimensions: 11'7" x 7'7"
Area: 89 sq. ft
Counted as living area: Yes

Heated: Yes
Finished: Yes
Enclosed: Yes
Contiguous: Yes
Permitted: Yes
Wet space: No
Addition: No
Conversion: No

1614 East Roma Avenue, Camelback East, Phoenix, Maricopa County, Arizona, United States, 85016

15 Floor 1 - Patio



Dimensions: 30'11" x 17'9"
Area: 532 sq. ft
Counted as living area: No

Heated: No
Finished: No
Enclosed: No
Contiguous: Yes
Permitted: Yes
Wet space: No
Addition: No
Conversion: No

16 Floor 1 - Bedroom



Dimensions: 12'2" x 9'0"
Area: 109 sq. ft
Counted as living area: Yes

Heated: Yes
Finished: Yes
Enclosed: Yes
Contiguous: Yes
Permitted: Yes
Wet space: No
Addition: No
Conversion: No

17 Floor 1 - Living Room

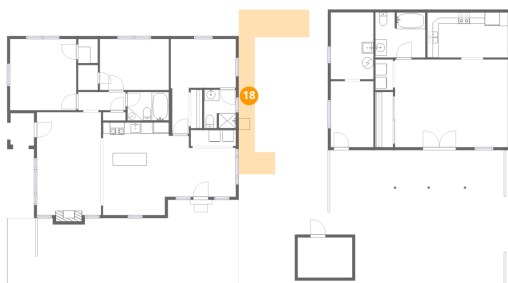


Dimensions: 11'3" x 18'1"
Area: 209 sq. ft
Counted as living area: Yes

Heated: Yes
Finished: Yes
Enclosed: Yes
Contiguous: Yes
Permitted: Yes
Wet space: No
Addition: No
Conversion: No

1614 East Roma Avenue, Camelback East, Phoenix, Maricopa County, Arizona, United States, 85016

18 Floor 1 - Yard



Dimensions: 12'5" x 28'11"
Area: 143 sq. ft
Counted as living area: No

Heated: No
Finished: No
Enclosed: No
Contiguous: Yes
Permitted: No
Wet space: No
Addition: No
Conversion: No

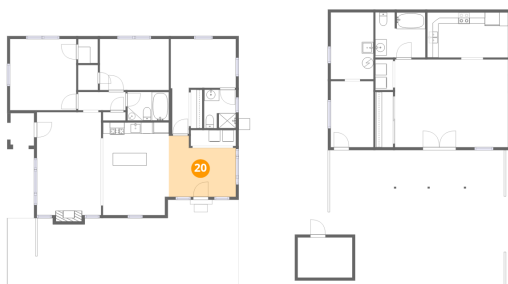
19 Floor 1 - Hall



Dimensions: 8'4" x 3'3"
Area: 27 sq. ft
Counted as living area: Yes

Heated: Yes
Finished: Yes
Enclosed: Yes
Contiguous: Yes
Permitted: Yes
Wet space: No
Addition: No
Conversion: No

20 Floor 1 - Dining Area



Dimensions: 11'9" x 10'9"
Area: 108 sq. ft
Counted as living area: Yes

Heated: Yes
Finished: Yes
Enclosed: Yes
Contiguous: Yes
Permitted: Yes
Wet space: No
Addition: No
Conversion: No

1614 East Roma Avenue, Camelback East, Phoenix, Maricopa County, Arizona, United States, 85016

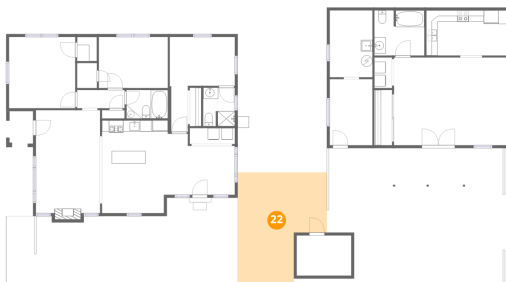
21 Floor 1 - Bedroom



Dimensions: 11'8" x 12'6"
Area: 146 sq. ft
Counted as living area: Yes

Heated: Yes
Finished: Yes
Enclosed: Yes
Contiguous: Yes
Permitted: Yes
Wet space: No
Addition: No
Conversion: No

22 Floor 1 - Patio



Dimensions: 15'8" x 19'8"
Area: 255 sq. ft
Counted as living area: No

Heated: No
Finished: No
Enclosed: No
Contiguous: Yes
Permitted: Yes
Wet space: No
Addition: No
Conversion: No

23 Floor 1 - Kitchen



Dimensions: 14'2" x 7'11"
Area: 113 sq. ft
Counted as living area: Yes

Heated: Yes
Finished: Yes
Enclosed: Yes
Contiguous: Yes
Permitted: Yes
Wet space: No
Addition: No
Conversion: No

1614 East Roma Avenue, Camelback East, Phoenix, Maricopa County, Arizona, United States, 85016

24 Floor 1 - Bath



Dimensions: 8'9" x 7'11"
Area: 69 sq. ft
Counted as living area: Yes

Heated: Yes
Finished: Yes
Enclosed: Yes
Contiguous: Yes
Permitted: Yes
Wet space: Yes
Addition: No
Conversion: No