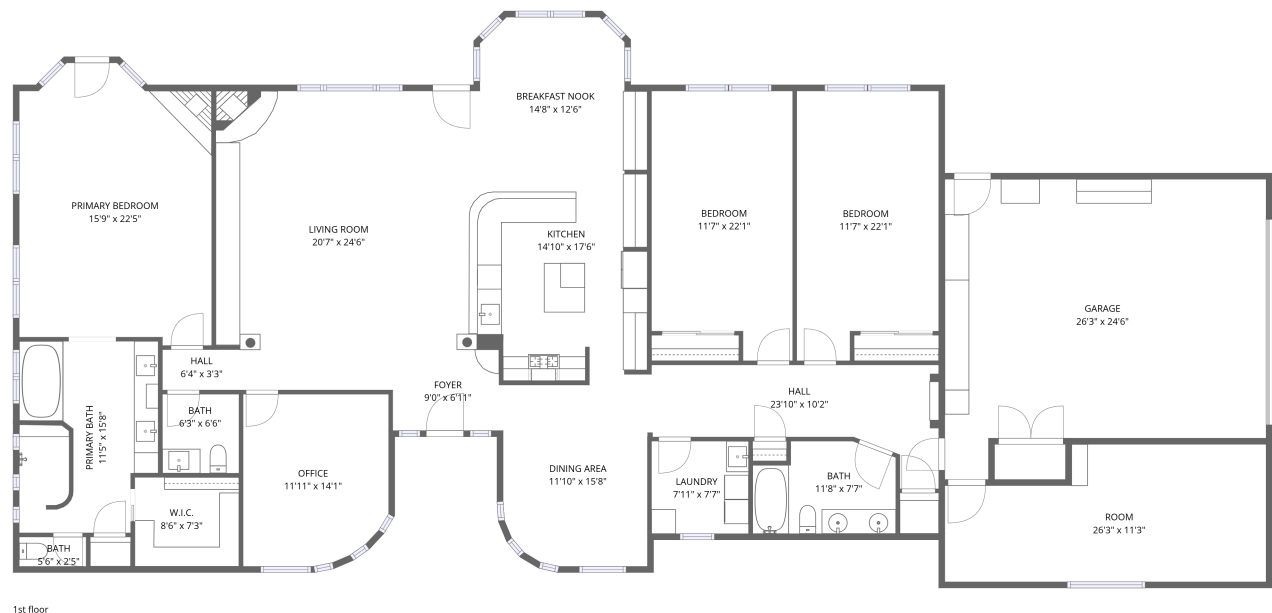


Home data report

15315 East Melanie Drive, Scottsdale, Maricopa County,  
Arizona, United States, 85262




Total Area: 3672 sq. ft


1st Floor: 3672 sq. ft

Excluded: Walls: 192 sq. ft

Property summary

 1 Floors

 3 Bedrooms

 2 Bathrooms

Home data report

**15315 East Melanie Drive, Scottsdale, Maricopa County,  
Arizona, United States, 85262**



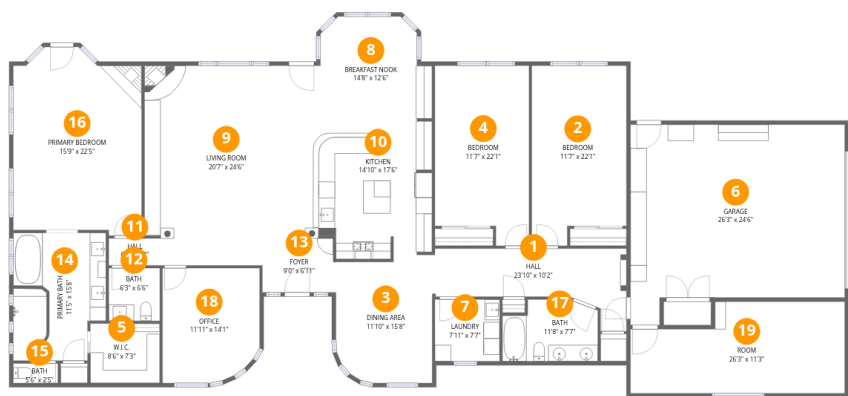
**1**  
Half baths



**1**  
Garages

Home data report

15315 East Melanie Drive, Scottsdale, Maricopa County,  
Arizona, United States, 85262



Room dimensions

Floor 1 Total:3672sqft   Excluded: 0sqft

#		Dimensions	sqft	Counted as living area
1	Hall	23'10" x 10'2"	242 sq. ft	Yes
2	Bedroom	11'7" x 22'1"	256 sq. ft	Yes
3	Dining Area	11'10" x 15'8"	185 sq. ft	Yes
4	Bedroom	11'7" x 22'1"	255 sq. ft	Yes
5	W.I.C.	8'6" x 7'3"	62 sq. ft	Yes
6	Garage	26'3" x 24'6"	644 sq. ft	Yes
7	Laundry	7'11" x 7'7"	60 sq. ft	Yes
8	Breakfast Nook	14'8" x 12'6"	184 sq. ft	Yes
9	Living Room	20'7" x 24'6"	504 sq. ft	Yes
10	Kitchen	14'10" x 17'6"	260 sq. ft	Yes
11	Hall	6'4" x 3'3"	21 sq. ft	Yes

## Home data report

**15315 East Melanie Drive, Scottsdale, Maricopa County,  
Arizona, United States, 85262**

#		Dimensions	sqft	Counted as living area
12	Bath	6'3" x 6'6"	40 sq. ft	Yes
13	Foyer	9'0" x 6'11"	63 sq. ft	Yes
14	Primary Bath	11'5" x 15'8"	178 sq. ft	Yes
15	Bath	5'6" x 2'5"	13 sq. ft	Yes
16	Primary Bedroom	15'9" x 22'5"	353 sq. ft	Yes
17	Bath	11'8" x 7'7"	89 sq. ft	Yes
18	Office	11'11" x 14'1"	168 sq. ft	Yes
19	Room	26'3" x 11'3"	295 sq. ft	Yes

15315 East Melanie Drive, Scottsdale, Maricopa County,  
Arizona, United States, 85262

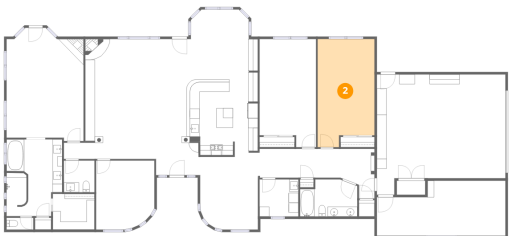
1 Floor 1 - Hall



Dimensions: 23'10" x 10'2"  
Area: 242 sq. ft  
Counted as living area: Yes

Heated: Yes  
Finished: Yes  
Enclosed: Yes  
Contiguous: Yes  
Permitted: Yes  
Wet space: No  
Addition: No  
Conversion: No

2 Floor 1 - Bedroom



Dimensions: 11'7" x 22'1"  
Area: 256 sq. ft  
Counted as living area: Yes

Heated: Yes  
Finished: Yes  
Enclosed: Yes  
Contiguous: Yes  
Permitted: Yes  
Wet space: No  
Addition: No  
Conversion: No

## Home data report

15315 East Melanie Drive, Scottsdale, Maricopa County,  
Arizona, United States, 85262

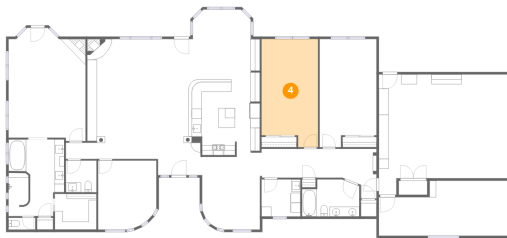
### 3 Floor 1 - Dining Area



Dimensions: 11'10" x 15'8"  
Area: 185 sq. ft  
Counted as living area: Yes

Heated: Yes  
Finished: Yes  
Enclosed: Yes  
Contiguous: Yes  
Permitted: Yes  
Wet space: No  
Addition: No  
Conversion: No

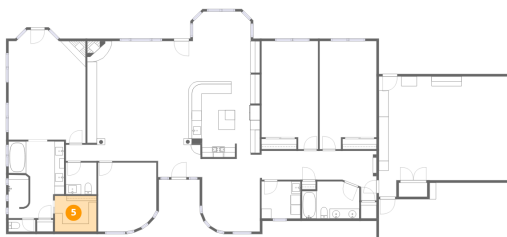
### 4 Floor 1 - Bedroom



Dimensions: 11'7" x 22'1"  
Area: 255 sq. ft  
Counted as living area: Yes

Heated: Yes  
Finished: Yes  
Enclosed: Yes  
Contiguous: Yes  
Permitted: Yes  
Wet space: No  
Addition: No  
Conversion: No

### 5 Floor 1 - W.I.C.



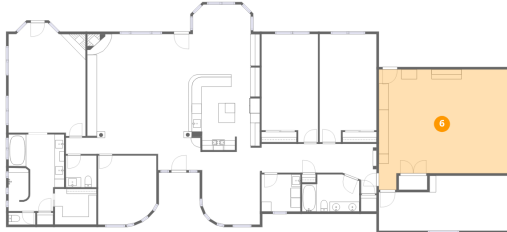
Dimensions: 8'6" x 7'3"  
Area: 62 sq. ft  
Counted as living area: Yes

Heated: Yes  
Finished: Yes  
Enclosed: Yes  
Contiguous: Yes  
Permitted: Yes  
Wet space: No  
Addition: No  
Conversion: No

## Home data report

15315 East Melanie Drive, Scottsdale, Maricopa County,  
Arizona, United States, 85262

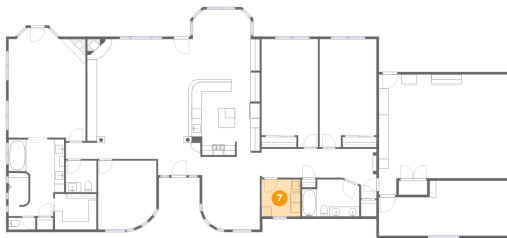
### 6 Floor 1 - Garage



Dimensions: 26'3" x 24'6"  
Area: 644 sq. ft  
Counted as living area: No

Heated: No  
Finished: Yes  
Enclosed: Yes  
Contiguous: Yes  
Permitted: Yes  
Wet space: No  
Addition: No  
Conversion: No

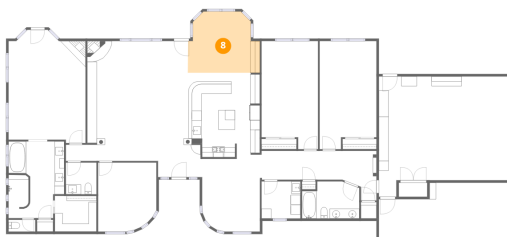
### 7 Floor 1 - Laundry



Dimensions: 7'11" x 7'7"  
Area: 60 sq. ft  
Counted as living area: Yes

Heated: Yes  
Finished: Yes  
Enclosed: Yes  
Contiguous: Yes  
Permitted: Yes  
Wet space: No  
Addition: No  
Conversion: No

### 8 Floor 1 - Breakfast Nook

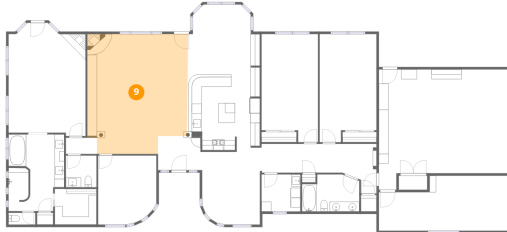


Dimensions: 14'8" x 12'6"  
Area: 184 sq. ft  
Counted as living area: Yes

Heated: Yes  
Finished: Yes  
Enclosed: Yes  
Contiguous: Yes  
Permitted: Yes  
Wet space: No  
Addition: No  
Conversion: No

15315 East Melanie Drive, Scottsdale, Maricopa County,  
Arizona, United States, 85262

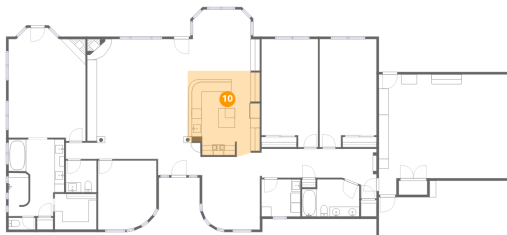
## 9 Floor 1 - Living Room



Dimensions: 20'7" x 24'6"  
Area: 504 sq. ft  
Counted as living area: Yes

Heated: Yes  
Finished: Yes  
Enclosed: Yes  
Contiguous: Yes  
Permitted: Yes  
Wet space: No  
Addition: No  
Conversion: No

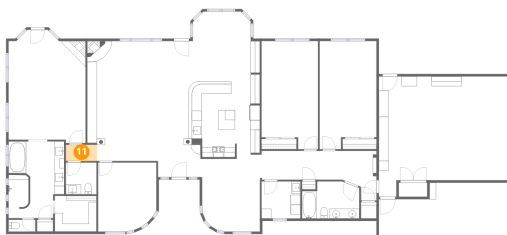
## 10 Floor 1 - Kitchen



Dimensions: 14'10" x 17'6"  
Area: 260 sq. ft  
Counted as living area: Yes

Heated: Yes  
Finished: Yes  
Enclosed: Yes  
Contiguous: Yes  
Permitted: Yes  
Wet space: No  
Addition: No  
Conversion: No

## 11 Floor 1 - Hall



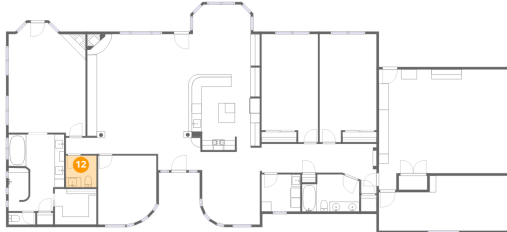
Dimensions: 6'4" x 3'3"  
Area: 21 sq. ft  
Counted as living area: Yes

Heated: Yes  
Finished: Yes  
Enclosed: Yes  
Contiguous: Yes  
Permitted: Yes  
Wet space: No  
Addition: No  
Conversion: No



15315 East Melanie Drive, Scottsdale, Maricopa County,  
Arizona, United States, 85262

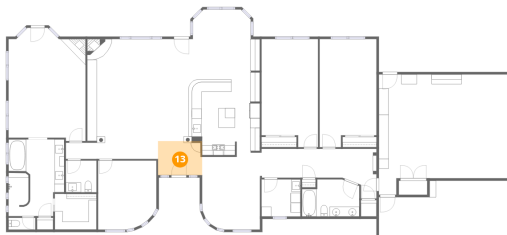
## 12 Floor 1 - Bath



Dimensions: 6'3" x 6'6"  
Area: 40 sq. ft  
Counted as living area: Yes

Heated: Yes  
Finished: Yes  
Enclosed: Yes  
Contiguous: Yes  
Permitted: Yes  
Wet space: Yes  
Addition: No  
Conversion: No

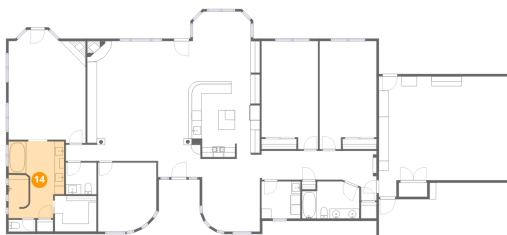
## 13 Floor 1 - Foyer



Dimensions: 9'0" x 6'11"  
Area: 63 sq. ft  
Counted as living area: Yes

Heated: Yes  
Finished: Yes  
Enclosed: Yes  
Contiguous: Yes  
Permitted: Yes  
Wet space: No  
Addition: No  
Conversion: No

## 14 Floor 1 - Primary Bath



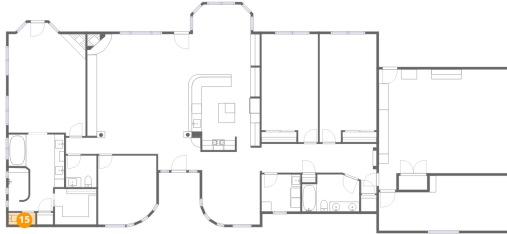
Dimensions: 11'5" x 15'8"  
Area: 178 sq. ft  
Counted as living area: Yes

Heated: Yes  
Finished: Yes  
Enclosed: Yes  
Contiguous: Yes  
Permitted: Yes  
Wet space: Yes  
Addition: No  
Conversion: No

## Home data report

15315 East Melanie Drive, Scottsdale, Maricopa County,  
Arizona, United States, 85262

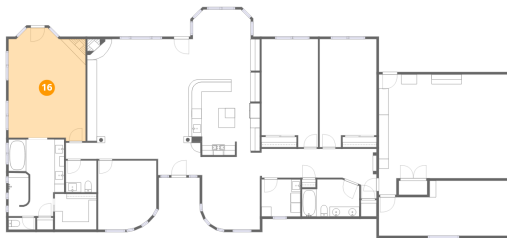
### 15 Floor 1 - Bath



Dimensions: 5'6" x 2'5"  
Area: 13 sq. ft  
Counted as living area: Yes

Heated: Yes  
Finished: Yes  
Enclosed: Yes  
Contiguous: Yes  
Permitted: Yes  
Wet space: Yes  
Addition: No  
Conversion: No

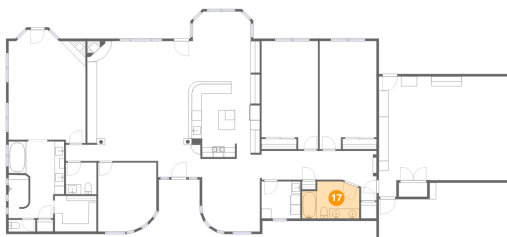
### 16 Floor 1 - Primary Bedroom



Dimensions: 15'9" x 22'5"  
Area: 353 sq. ft  
Counted as living area: Yes

Heated: Yes  
Finished: Yes  
Enclosed: Yes  
Contiguous: Yes  
Permitted: Yes  
Wet space: No  
Addition: No  
Conversion: No

### 17 Floor 1 - Bath

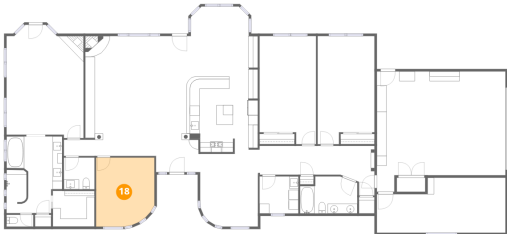


Dimensions: 11'8" x 7'7"  
Area: 89 sq. ft  
Counted as living area: Yes

Heated: Yes  
Finished: Yes  
Enclosed: Yes  
Contiguous: Yes  
Permitted: Yes  
Wet space: Yes  
Addition: No  
Conversion: No

15315 East Melanie Drive, Scottsdale, Maricopa County,  
Arizona, United States, 85262

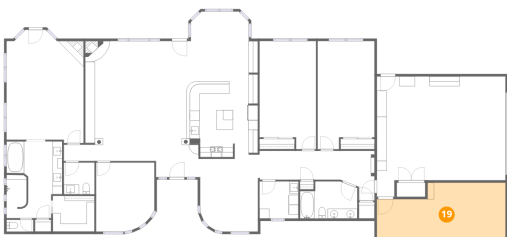
18 Floor 1 - Office



Dimensions: 11'11" x 14'1"  
Area: 168 sq. ft  
Counted as living area: Yes

Heated: Yes  
Finished: Yes  
Enclosed: Yes  
Contiguous: Yes  
Permitted: Yes  
Wet space: No  
Addition: No  
Conversion: No

19 Floor 1 - Room



Dimensions: 26'3" x 11'3"  
Area: 295 sq. ft  
Counted as living area: No

Heated: Yes  
Finished: Yes  
Enclosed: Yes  
Contiguous: No  
Permitted: Yes  
Wet space: No  
Addition: No  
Conversion: No