

Home data report

43459 West Maricopa Avenue, Maricopa, Pinal County, Arizona,
United States, 85138



Total Area: 3585 sq. ft
1st Floor: 1531 sq. ft, 2nd Floor: 2054 sq. ft
Excluded: Garage 538 sq. ft, Walls: 213 sq. ft

Property summary

 **2** Floors

 **4** Bedrooms

 **2** Bathrooms

Home data report

**43459 West Maricopa Avenue, Maricopa, Pinal County, Arizona,
United States, 85138**



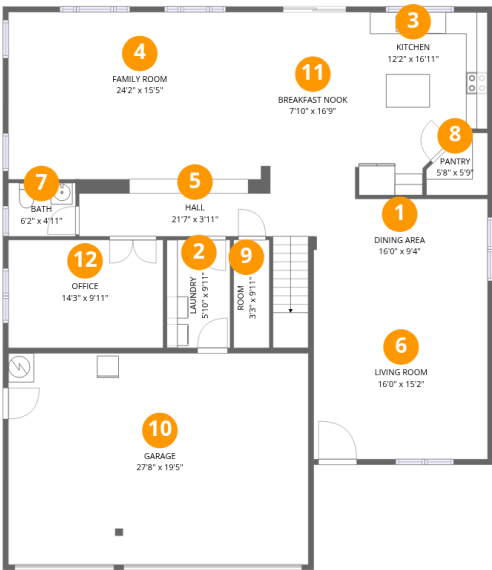
1
Half baths



1
Garages

Home data report

43459 West Maricopa Avenue, Maricopa, Pinal County, Arizona,
United States, 85138



Room dimensions

Floor 1

Total:1531sqft Excluded: 538sqft

#		Dimensions	sqft	Counted as living area
1	Dining Area	16'0" x 9'4"	143 sq. ft	Yes
2	Laundry	5'10" x 9'11"	58 sq. ft	Yes
3	Kitchen	12'2" x 16'11"	175 sq. ft	Yes
4	Family Room	24'2" x 15'5"	389 sq. ft	Yes
5	Hall	21'7" x 3'11"	119 sq. ft	Yes
6	Living Room	16'0" x 15'2"	244 sq. ft	Yes
7	Bath	6'2" x 4'11"	30 sq. ft	Yes
8	Pantry	5'8" x 5'9"	27 sq. ft	Yes
9	Room	3'3" x 9'11"	33 sq. ft	Yes
10	Garage	27'8" x 19'5"	538 sq. ft	No
11	Breakfast Nook	7'10" x 16'9"	131 sq. ft	Yes

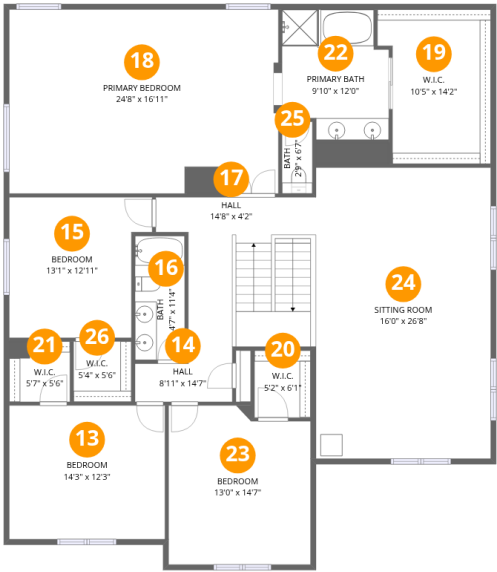
Home data report

43459 West Maricopa Avenue, Maricopa, Pinal County, Arizona,
United States, 85138

#		Dimensions	sqft	Counted as living area
12	Office	14'3" x 9'11"	142 sq. ft	Yes

Home data report

43459 West Maricopa Avenue, Maricopa, Pinal County, Arizona,
United States, 85138



Room dimensions

Floor 2 Total:2054sqft Excluded: 0sqft

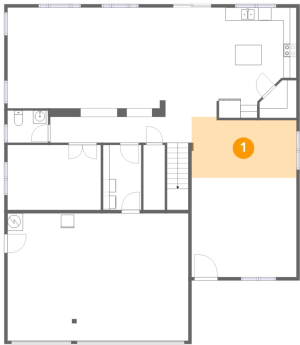
#		Dimensions	sqft	Counted as living area
13	Bedroom	14'3" x 12'3"	175 sq. ft	Yes
14	Hall	8'11" x 14'7"	148 sq. ft	Yes
15	Bedroom	13'1" x 12'11"	151 sq. ft	Yes
16	Bath	4'7" x 11'4"	52 sq. ft	Yes
17	Hall	14'8" x 4'2"	59 sq. ft	Yes
18	Primary Bedroom	24'8" x 16'11"	407 sq. ft	Yes
19	W.I.C.	10'5" x 14'2"	132 sq. ft	Yes
20	W.I.C.	5'2" x 6'1"	32 sq. ft	Yes
21	W.I.C.	5'7" x 5'6"	31 sq. ft	Yes
22	Primary Bath	9'10" x 12'0"	106 sq. ft	Yes
23	Bedroom	13'0" x 14'7"	182 sq. ft	Yes

Home data report

43459 West Maricopa Avenue, Maricopa, Pinal County, Arizona,
United States, 85138

#		Dimensions	sqft	Counted as living area
24	Sitting Room	16'0" x 26'8"	429 sq. ft	Yes
25	Bath	2'9" x 6'7"	18 sq. ft	Yes
26	W.I.C.	5'4" x 5'6"	29 sq. ft	Yes

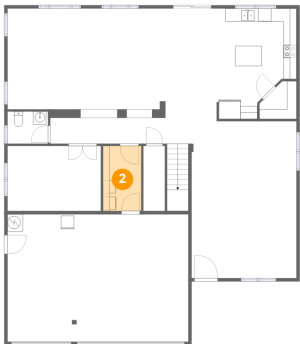
1 Floor 1 - Dining Area



Dimensions: 16'0" x 9'4"
Area: 143 sq. ft
Counted as living area: Yes

Heated: Yes
Finished: Yes
Enclosed: Yes
Contiguous: Yes
Permitted: Yes
Wet space: No
Addition: No
Conversion: No

2 Floor 1 - Laundry



Dimensions: 5'10" x 9'11"
Area: 58 sq. ft
Counted as living area: Yes

Heated: Yes
Finished: Yes
Enclosed: Yes
Contiguous: Yes
Permitted: Yes
Wet space: No
Addition: No
Conversion: No

43459 West Maricopa Avenue, Maricopa, Pinal County, Arizona,
United States, 85138

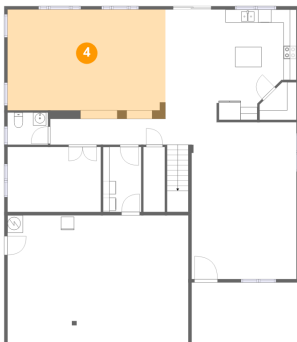
3 Floor 1 - Kitchen



Dimensions: 12'2" x 16'11"
Area: 175 sq. ft
Counted as living area: Yes

Heated: Yes
Finished: Yes
Enclosed: Yes
Contiguous: Yes
Permitted: Yes
Wet space: No
Addition: No
Conversion: No

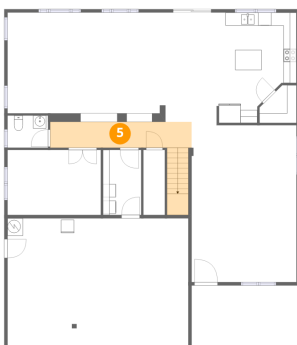
4 Floor 1 - Family Room



Dimensions: 24'2" x 15'5"
Area: 389 sq. ft
Counted as living area: Yes

Heated: Yes
Finished: Yes
Enclosed: Yes
Contiguous: Yes
Permitted: Yes
Wet space: No
Addition: No
Conversion: No

5 Floor 1 - Hall

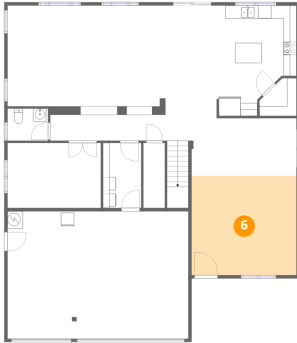


Dimensions: 21'7" x 3'11"
Area: 119 sq. ft
Counted as living area: Yes

Heated: Yes
Finished: Yes
Enclosed: Yes
Contiguous: Yes
Permitted: Yes
Wet space: No
Addition: No
Conversion: No

43459 West Maricopa Avenue, Maricopa, Pinal County, Arizona,
United States, 85138

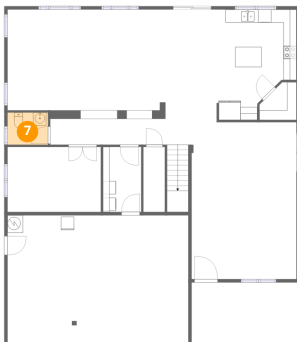
6 Floor 1 - Living Room



Dimensions: 16'0" x 15'2"
Area: 244 sq. ft
Counted as living area: Yes

Heated: Yes
Finished: Yes
Enclosed: Yes
Contiguous: Yes
Permitted: Yes
Wet space: No
Addition: No
Conversion: No

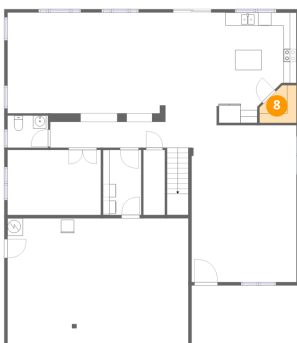
7 Floor 1 - Bath



Dimensions: 6'2" x 4'11"
Area: 30 sq. ft
Counted as living area: Yes

Heated: Yes
Finished: Yes
Enclosed: Yes
Contiguous: Yes
Permitted: Yes
Wet space: Yes
Addition: No
Conversion: No

8 Floor 1 - Pantry



Dimensions: 5'8" x 5'9"
Area: 27 sq. ft
Counted as living area: Yes

Heated: Yes
Finished: Yes
Enclosed: Yes
Contiguous: Yes
Permitted: Yes
Wet space: No
Addition: No
Conversion: No

9 Floor 1 - Room



Dimensions: 3'3" x 9'11"
Area: 33 sq. ft
Counted as living area: Yes

Heated: Yes
Finished: Yes
Enclosed: Yes
Contiguous: Yes
Permitted: Yes
Wet space: No
Addition: No
Conversion: No

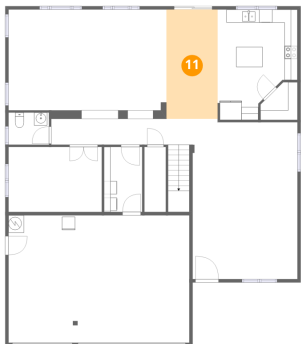
10 Floor 1 - Garage



Dimensions: 27'8" x 19'5"
Area: 538 sq. ft
Counted as living area: No

Heated: No
Finished: No
Enclosed: Yes
Contiguous: Yes
Permitted: Yes
Wet space: No
Addition: No
Conversion: No

11 Floor 1 - Breakfast Nook

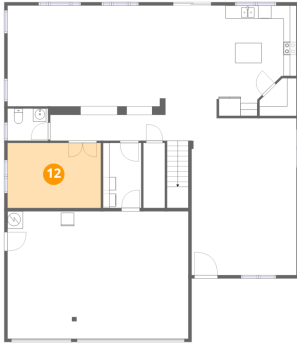


Dimensions: 7'10" x 16'9"
Area: 131 sq. ft
Counted as living area: Yes

Heated: Yes
Finished: Yes
Enclosed: Yes
Contiguous: Yes
Permitted: Yes
Wet space: No
Addition: No
Conversion: No

43459 West Maricopa Avenue, Maricopa, Pinal County, Arizona,
United States, 85138

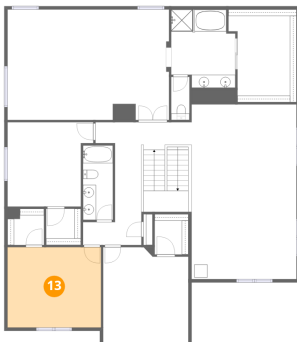
12 Floor 1 - Office



Dimensions: 14'3" x 9'11"
Area: 142 sq. ft
Counted as living area: Yes

Heated: Yes
Finished: Yes
Enclosed: Yes
Contiguous: Yes
Permitted: Yes
Wet space: No
Addition: No
Conversion: No

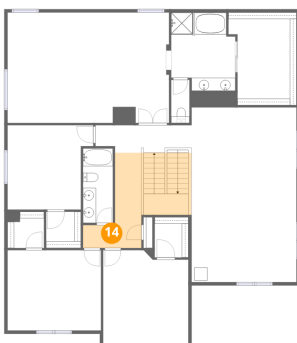
13 Floor 2 - Bedroom



Dimensions: 14'3" x 12'3"
Area: 175 sq. ft
Counted as living area: Yes

Heated: Yes
Finished: Yes
Enclosed: Yes
Contiguous: Yes
Permitted: Yes
Wet space: No
Addition: No
Conversion: No

14 Floor 2 - Hall

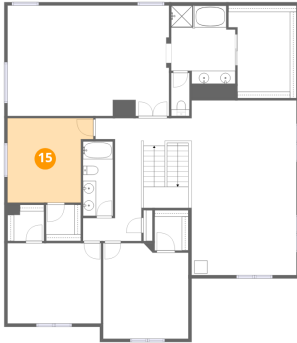


Dimensions: 8'11" x 14'7"
Area: 148 sq. ft
Counted as living area: Yes

Heated: Yes
Finished: Yes
Enclosed: Yes
Contiguous: Yes
Permitted: Yes
Wet space: No
Addition: No
Conversion: No

43459 West Maricopa Avenue, Maricopa, Pinal County, Arizona,
United States, 85138

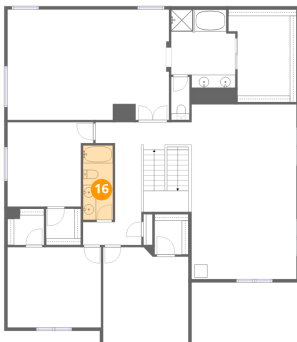
15 Floor 2 - Bedroom



Dimensions: 13'1" x 12'11"
Area: 151 sq. ft
Counted as living area: Yes

Heated: Yes
Finished: Yes
Enclosed: Yes
Contiguous: Yes
Permitted: Yes
Wet space: No
Addition: No
Conversion: No

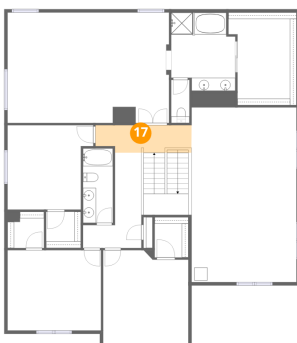
16 Floor 2 - Bath



Dimensions: 4'7" x 11'4"
Area: 52 sq. ft
Counted as living area: Yes

Heated: Yes
Finished: Yes
Enclosed: Yes
Contiguous: Yes
Permitted: Yes
Wet space: Yes
Addition: No
Conversion: No

17 Floor 2 - Hall



Dimensions: 14'8" x 4'2"
Area: 59 sq. ft
Counted as living area: Yes

Heated: Yes
Finished: Yes
Enclosed: Yes
Contiguous: Yes
Permitted: Yes
Wet space: No
Addition: No
Conversion: No

43459 West Maricopa Avenue, Maricopa, Pinal County, Arizona,
United States, 85138

18 Floor 2 - Primary Bedroom



Dimensions: 24'8" x 16'11"
Area: 407 sq. ft
Counted as living area: Yes

Heated: Yes
Finished: Yes
Enclosed: Yes
Contiguous: Yes
Permitted: Yes
Wet space: No
Addition: No
Conversion: No

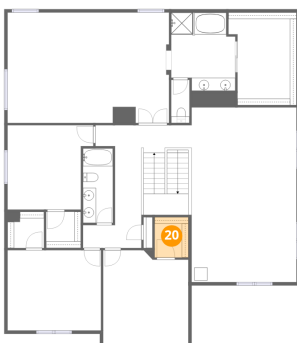
19 Floor 2 - W.I.C.



Dimensions: 10'5" x 14'2"
Area: 132 sq. ft
Counted as living area: Yes

Heated: Yes
Finished: Yes
Enclosed: Yes
Contiguous: Yes
Permitted: Yes
Wet space: No
Addition: No
Conversion: No

20 Floor 2 - W.I.C.

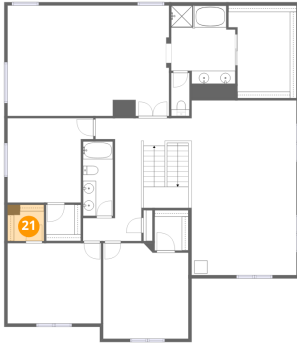


Dimensions: 5'2" x 6'1"
Area: 32 sq. ft
Counted as living area: Yes

Heated: Yes
Finished: Yes
Enclosed: Yes
Contiguous: Yes
Permitted: Yes
Wet space: No
Addition: No
Conversion: No

43459 West Maricopa Avenue, Maricopa, Pinal County, Arizona,
United States, 85138

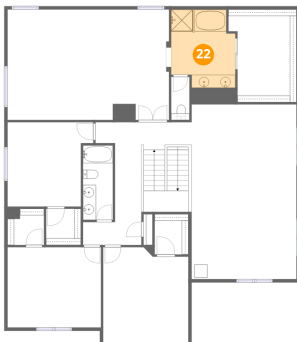
21 Floor 2 - W.I.C.



Dimensions: 5'7" x 5'6"
Area: 31 sq. ft
Counted as living area: Yes

Heated: Yes
Finished: Yes
Enclosed: Yes
Contiguous: Yes
Permitted: Yes
Wet space: No
Addition: No
Conversion: No

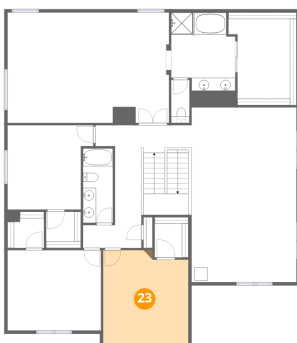
22 Floor 2 - Primary Bath



Dimensions: 9'10" x 12'0"
Area: 106 sq. ft
Counted as living area: Yes

Heated: Yes
Finished: Yes
Enclosed: Yes
Contiguous: Yes
Permitted: Yes
Wet space: Yes
Addition: No
Conversion: No

23 Floor 2 - Bedroom

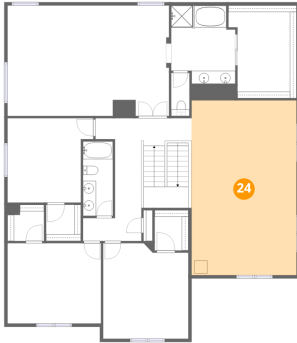


Dimensions: 13'0" x 14'7"
Area: 182 sq. ft
Counted as living area: Yes

Heated: Yes
Finished: Yes
Enclosed: Yes
Contiguous: Yes
Permitted: Yes
Wet space: No
Addition: No
Conversion: No

43459 West Maricopa Avenue, Maricopa, Pinal County, Arizona,
United States, 85138

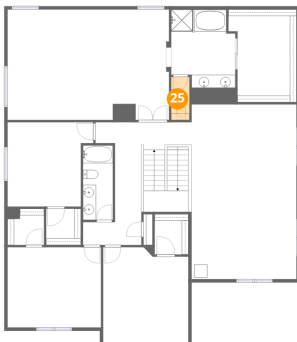
24 Floor 2 - Sitting Room



Dimensions: 16'0" x 26'8"
Area: 429 sq. ft
Counted as living area: Yes

Heated: Yes
Finished: Yes
Enclosed: Yes
Contiguous: Yes
Permitted: Yes
Wet space: No
Addition: No
Conversion: No

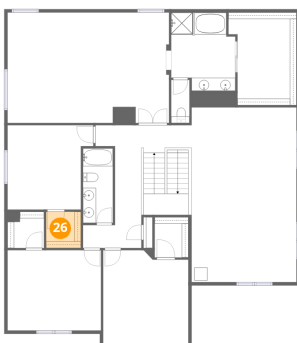
25 Floor 2 - Bath



Dimensions: 2'9" x 6'7"
Area: 18 sq. ft
Counted as living area: Yes

Heated: Yes
Finished: Yes
Enclosed: Yes
Contiguous: Yes
Permitted: Yes
Wet space: Yes
Addition: No
Conversion: No

26 Floor 2 - W.I.C.



Dimensions: 5'4" x 5'6"
Area: 29 sq. ft
Counted as living area: Yes

Heated: Yes
Finished: Yes
Enclosed: Yes
Contiguous: Yes
Permitted: Yes
Wet space: No
Addition: No
Conversion: No