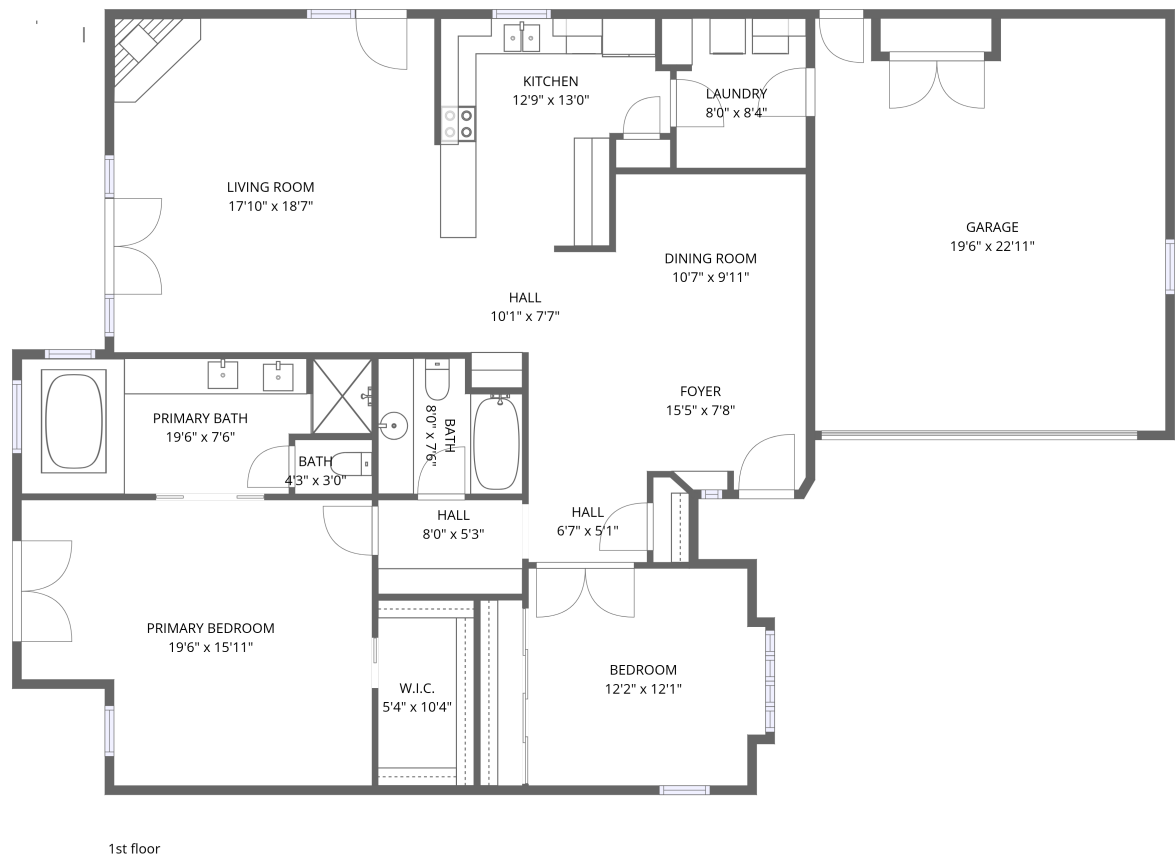


Home data report

3015 East Coolidge Street, Camelback East, Phoenix, Maricopa County, Arizona, United States, 85016, 10




Total Area: 1676 sq. ft


1st Floor: 1676 sq. ft

Excluded: Garage 431 sq. ft, Undefined 12 sq. ft, Walls: 127 sq. ft

Property summary

 1 Floors

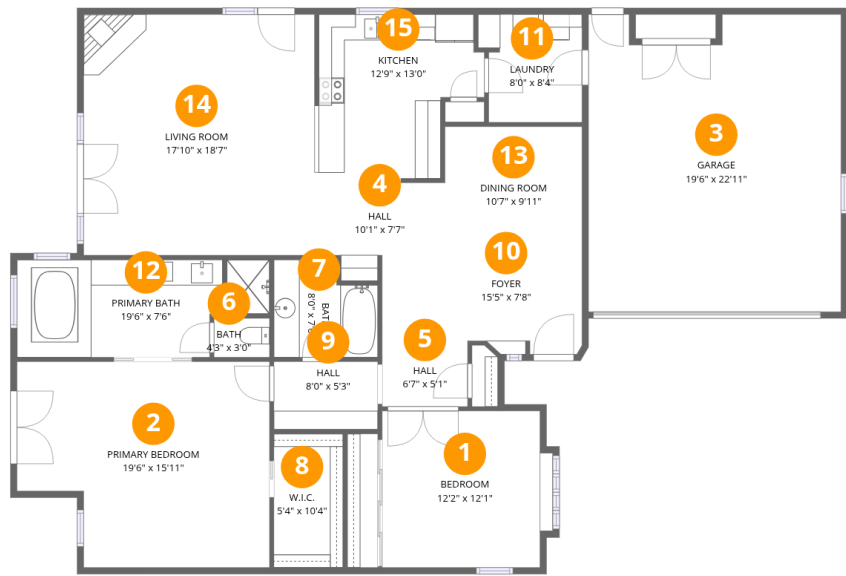
 2 Bedrooms

 2 Bathrooms

 1 Garages

Home data report

3015 East Coolidge Street, Camelback East, Phoenix, Maricopa County, Arizona, United States, 85016, 10



Room dimensions

Floor 1 Total:1676sqft   Excluded: 443sqft

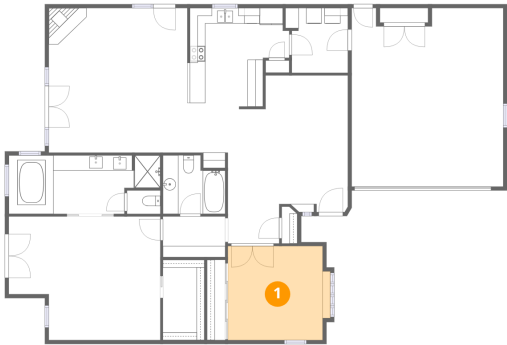
#		Dimensions	sqft	Counted as living area
1	Bedroom	12'2" x 12'1"	154 sq. ft	Yes
2	Primary Bedroom	19'6" x 15'11"	280 sq. ft	Yes
3	Garage	19'6" x 22'11"	431 sq. ft	No
4	Hall	10'1" x 7'7"	62 sq. ft	Yes
5	Hall	6'7" x 5'1"	34 sq. ft	Yes
6	Bath	4'3" x 3'0"	13 sq. ft	Yes
7	Bath	8'0" x 7'6"	54 sq. ft	Yes
8	W.I.C.	5'4" x 10'4"	55 sq. ft	Yes
9	Hall	8'0" x 5'3"	42 sq. ft	Yes
10	Foyer	15'5" x 7'8"	109 sq. ft	Yes
11	Laundry	8'0" x 8'4"	62 sq. ft	Yes

## Home data report

**3015 East Coolidge Street, Camelback East, Phoenix, Maricopa County, Arizona, United States, 85016, 10**

#		Dimensions	sqft	Counted as living area
12	Primary Bath	19'6" x 7'6"	131 sq. ft	Yes
13	Dining Room	10'7" x 9'11"	105 sq. ft	Yes
14	Living Room	17'10" x 18'7"	332 sq. ft	Yes
15	Kitchen	12'9" x 13'0"	142 sq. ft	Yes

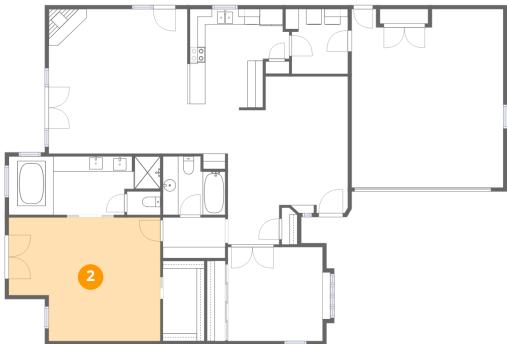
1 Floor 1 - Bedroom



Dimensions: 12'2" x 12'1"  
Area: 154 sq. ft  
Counted as living area: Yes

Heated: Yes  
Finished: Yes  
Enclosed: Yes  
Contiguous: Yes  
Permitted: Yes  
Wet space: No  
Addition: No  
Conversion: No

2 Floor 1 - Primary Bedroom

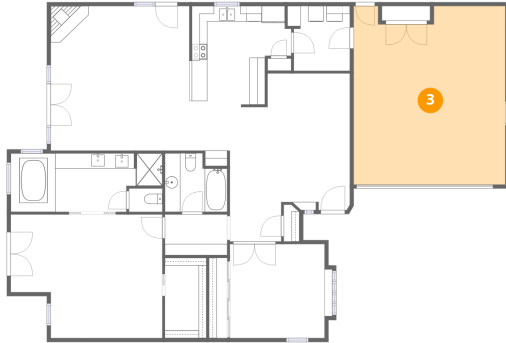


Dimensions: 19'6" x 15'11"  
Area: 280 sq. ft  
Counted as living area: Yes

Heated: Yes  
Finished: Yes  
Enclosed: Yes  
Contiguous: Yes  
Permitted: Yes  
Wet space: No  
Addition: No  
Conversion: No

3015 East Coolidge Street, Camelback East, Phoenix, Maricopa County, Arizona, United States, 85016, 10

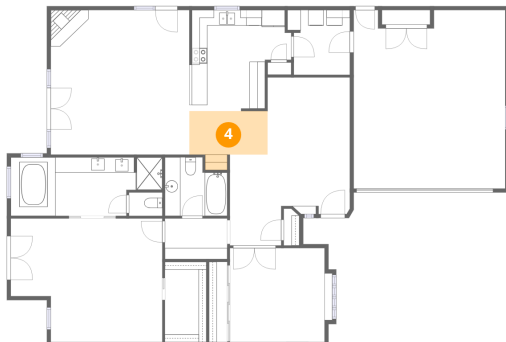
### 3 Floor 1 - Garage



Dimensions: 19'6" x 22'11"  
Area: 431 sq. ft  
Counted as living area: No

Heated: No  
Finished: No  
Enclosed: Yes  
Contiguous: Yes  
Permitted: Yes  
Wet space: No  
Addition: No  
Conversion: No

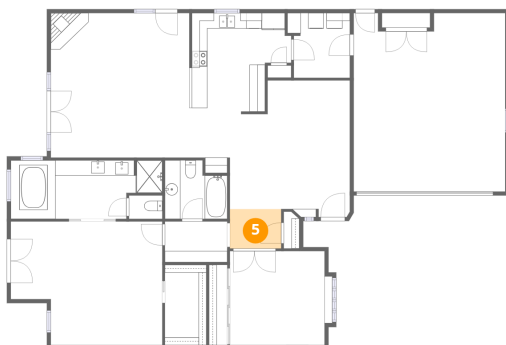
### 4 Floor 1 - Hall



Dimensions: 10'1" x 7'7"  
Area: 62 sq. ft  
Counted as living area: Yes

Heated: Yes  
Finished: Yes  
Enclosed: Yes  
Contiguous: Yes  
Permitted: Yes  
Wet space: No  
Addition: No  
Conversion: No

### 5 Floor 1 - Hall



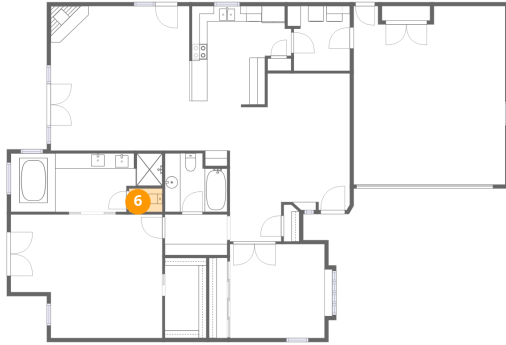
Dimensions: 6'7" x 5'1"  
Area: 34 sq. ft  
Counted as living area: Yes

Heated: Yes  
Finished: Yes  
Enclosed: Yes  
Contiguous: Yes  
Permitted: Yes  
Wet space: No  
Addition: No  
Conversion: No

## Home data report

3015 East Coolidge Street, Camelback East, Phoenix, Maricopa County, Arizona, United States, 85016, 10

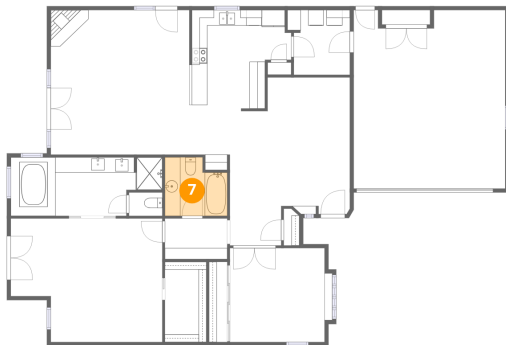
### 6 Floor 1 - Bath



Dimensions: 4'3" x 3'0"  
Area: 13 sq. ft  
Counted as living area: Yes

Heated: Yes  
Finished: Yes  
Enclosed: Yes  
Contiguous: Yes  
Permitted: Yes  
Wet space: Yes  
Addition: No  
Conversion: No

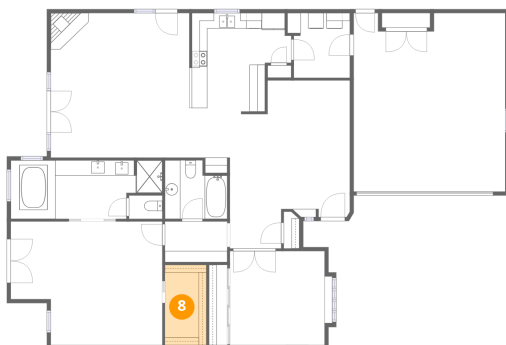
### 7 Floor 1 - Bath



Dimensions: 8'0" x 7'6"  
Area: 54 sq. ft  
Counted as living area: Yes

Heated: Yes  
Finished: Yes  
Enclosed: Yes  
Contiguous: Yes  
Permitted: Yes  
Wet space: Yes  
Addition: No  
Conversion: No

### 8 Floor 1 - W.I.C.

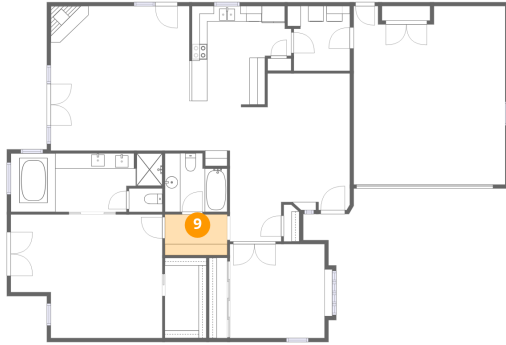


Dimensions: 5'4" x 10'4"  
Area: 55 sq. ft  
Counted as living area: Yes

Heated: Yes  
Finished: Yes  
Enclosed: Yes  
Contiguous: Yes  
Permitted: Yes  
Wet space: No  
Addition: No  
Conversion: No

3015 East Coolidge Street, Camelback East, Phoenix, Maricopa County, Arizona, United States, 85016, 10

## 9 Floor 1 - Hall



Dimensions: 8'0" x 5'3"  
Area: 42 sq. ft  
Counted as living area: Yes

Heated: Yes  
Finished: Yes  
Enclosed: Yes  
Contiguous: Yes  
Permitted: Yes  
Wet space: No  
Addition: No  
Conversion: No

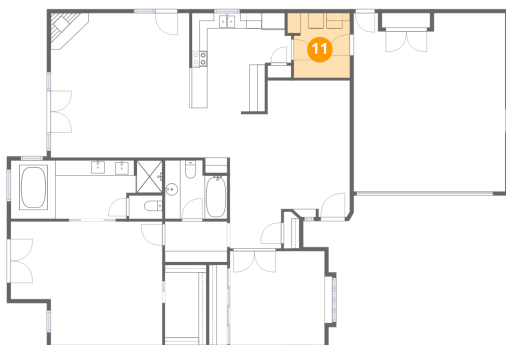
## 10 Floor 1 - Foyer



Dimensions: 15'5" x 7'8"  
Area: 109 sq. ft  
Counted as living area: Yes

Heated: Yes  
Finished: Yes  
Enclosed: Yes  
Contiguous: Yes  
Permitted: Yes  
Wet space: No  
Addition: No  
Conversion: No

## 11 Floor 1 - Laundry

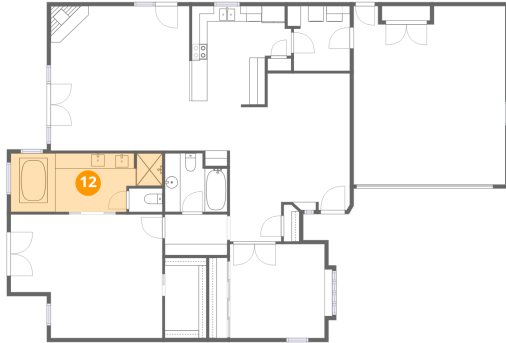


Dimensions: 8'0" x 8'4"  
Area: 62 sq. ft  
Counted as living area: Yes

Heated: Yes  
Finished: Yes  
Enclosed: Yes  
Contiguous: Yes  
Permitted: Yes  
Wet space: No  
Addition: No  
Conversion: No

3015 East Coolidge Street, Camelback East, Phoenix, Maricopa County, Arizona, United States, 85016, 10

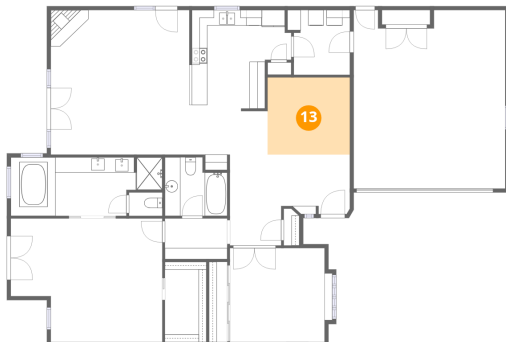
## 12 Floor 1 - Primary Bath



Dimensions: 19'6" x 7'6"  
Area: 131 sq. ft  
Counted as living area: Yes

Heated: Yes  
Finished: Yes  
Enclosed: Yes  
Contiguous: Yes  
Permitted: Yes  
Wet space: Yes  
Addition: No  
Conversion: No

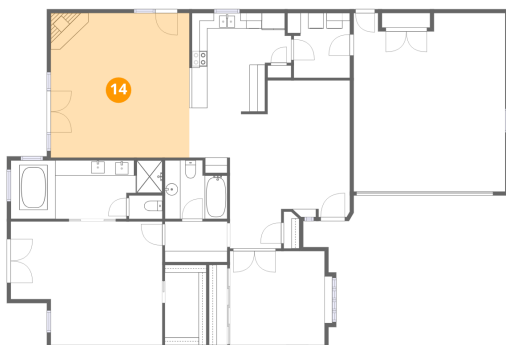
## 13 Floor 1 - Dining Room



Dimensions: 10'7" x 9'11"  
Area: 105 sq. ft  
Counted as living area: Yes

Heated: Yes  
Finished: Yes  
Enclosed: Yes  
Contiguous: Yes  
Permitted: Yes  
Wet space: No  
Addition: No  
Conversion: No

## 14 Floor 1 - Living Room



Dimensions: 17'10" x 18'7"  
Area: 332 sq. ft  
Counted as living area: Yes

Heated: Yes  
Finished: Yes  
Enclosed: Yes  
Contiguous: Yes  
Permitted: Yes  
Wet space: No  
Addition: No  
Conversion: No

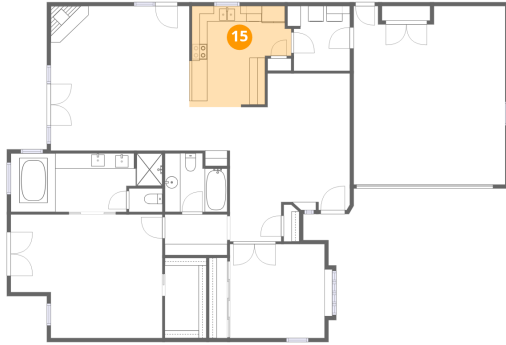


## Home data report

**3015 East Coolidge Street, Camelback East, Phoenix, Maricopa County, Arizona, United States, 85016, 10**

### **15** Floor 1 - Kitchen

---



**Dimensions:** 12'9" x 13'0"  
**Area:** 142 sq. ft  
**Counted as living area:** Yes

**Heated:** Yes  
**Finished:** Yes  
**Enclosed:** Yes  
**Contiguous:** Yes  
**Permitted:** Yes  
**Wet space:** No  
**Addition:** No  
**Conversion:** No