

Home data report

7400 E Gainey Club Road,Unit 230,Scottsdale,Arizona,United States, Unit 230

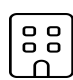


Total Area: 1858 sq. ft

Below Ground: 57 sq. ft, 1st Floor: 1541 sq. ft, 2nd Floor: 260 sq. ft

Excluded: Garage 285 sq. ft, Balcony 286 sq. ft, Open to below 709 sq. ft, Undefined 13 sq. ft, Walls: 212 sq. ft

Property summary

 **3** Floors

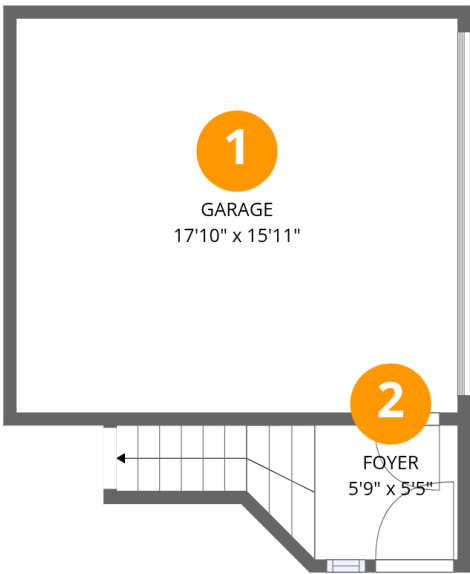
 **3** Bedrooms

 **2** Bathrooms

 **1** Garages

Home data report

7400 E Gainey Club Road,Unit 230,Scottsdale,Arizona,United States, Unit 230

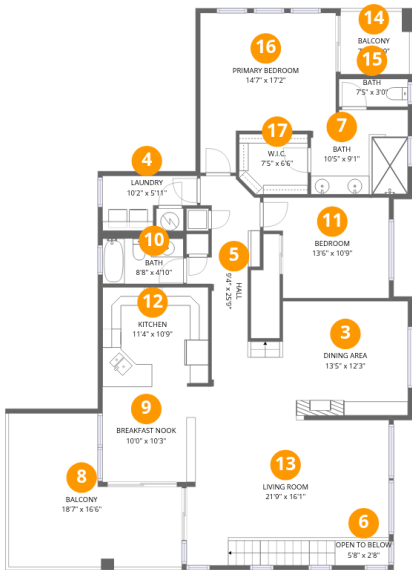


Room dimensions

Floor 1 Below grade Total:57sqft Excluded: 285sqft

#		Dimensions	sqft	Counted as living area
1	Garage	17'10" x 15'11"	285 sq. ft	No
2	Foyer	5'9" x 5'5"	57 sq. ft	Yes

7400 E Gainey Club Road,Unit 230,Scottsdale,Arizona,United States, Unit 230



Room dimensions

Floor 2 Total:1541sqft Excluded: 314sqft

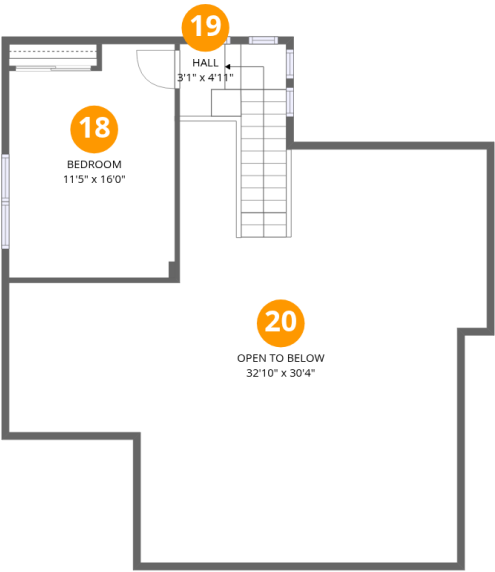
#		Dimensions	sqft	Counted as living area
3	Dining Area	13'5" x 12'3"	165 sq. ft	Yes
4	Laundry	10'2" x 5'11"	47 sq. ft	Yes
5	Hall	9'4" x 25'9"	156 sq. ft	Yes
6	Open To Below	5'8" x 2'8"	15 sq. ft	No
7	Bath	10'5" x 9'1"	88 sq. ft	Yes
8	Balcony	18'7" x 16'6"	236 sq. ft	No
9	Breakfast Nook	10'0" x 10'3"	102 sq. ft	Yes
10	Bath	8'8" x 4'10"	47 sq. ft	Yes
11	Bedroom	13'6" x 10'9"	131 sq. ft	Yes
12	Kitchen	11'4" x 10'9"	121 sq. ft	Yes
13	Living Room	21'9" x 16'1"	323 sq. ft	Yes

Home data report

7400 E Gainey Club Road,Unit 230,Scottsdale,Arizona,United States, Unit 230

#		Dimensions	sqft	Counted as living area
14	Balcony	7'5" x 6'9"	50 sq. ft	No
15	Bath	7'5" x 3'0"	22 sq. ft	Yes
16	Primary Bedroom	14'7" x 17'2"	202 sq. ft	Yes
17	W.I.C.	7'5" x 6'6"	46 sq. ft	Yes

7400 E Gainey Club Road,Unit 230,Scottsdale,Arizona,United States, Unit 230



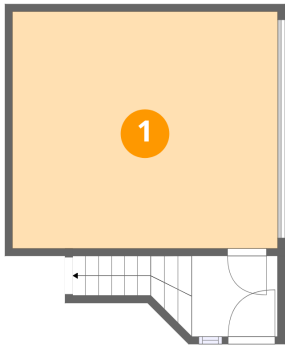
Room dimensions

Floor 3 Total:260sqft Excluded: 694sqft

#		Dimensions	sqft	Counted as living area
18	Bedroom	11'5" x 16'0"	171 sq. ft	Yes
19	Hall	3'1" x 4'11"	68 sq. ft	Yes
20	Open To Below	32'10" x 30'4"	694 sq. ft	No

7400 E Gainey Club Road,Unit 230,Scottsdale,Arizona,United States, Unit 230

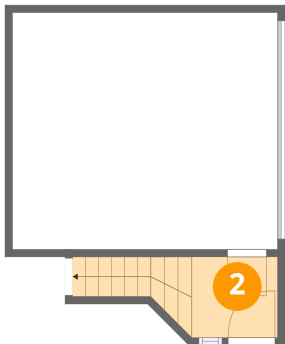
1 Floor 1 - Garage



Dimensions: 17'10" x 15'11"
Area: 285 sq. ft
Counted as living area: No

Heated: No
Finished: No
Enclosed: Yes
Contiguous: Yes
Permitted: Yes
Wet space: No
Addition: No
Conversion: No

2 Floor 1 - Foyer



Dimensions: 5'9" x 5'5"
Area: 57 sq. ft
Counted as living area: Yes

Heated: Yes
Finished: Yes
Enclosed: Yes
Contiguous: Yes
Permitted: Yes
Wet space: No
Addition: No
Conversion: No

7400 E Gainey Club Road,Unit 230,Scottsdale,Arizona,United States, Unit 230

3 Floor 2 - Dining Area



Dimensions: 13'5" x 12'3"
Area: 165 sq. ft
Counted as living area: Yes

Heated: Yes
Finished: Yes
Enclosed: Yes
Contiguous: Yes
Permitted: Yes
Wet space: No
Addition: No
Conversion: No

4 Floor 2 - Laundry



Dimensions: 10'2" x 5'11"
Area: 47 sq. ft
Counted as living area: Yes

Heated: Yes
Finished: Yes
Enclosed: Yes
Contiguous: Yes
Permitted: Yes
Wet space: No
Addition: No
Conversion: No

5 Floor 2 - Hall



Dimensions: 9'4" x 25'9"
Area: 156 sq. ft
Counted as living area: Yes

Heated: Yes
Finished: Yes
Enclosed: Yes
Contiguous: Yes
Permitted: Yes
Wet space: No
Addition: No
Conversion: No

7400 E Gainey Club Road,Unit 230,Scottsdale,Arizona,United States, Unit 230

6 Floor 2 - Open To Below



Dimensions: 5'8" x 2'8"
Area: 15 sq. ft
Counted as living area: No

Heated: No
Finished: No
Enclosed: No
Contiguous: Yes
Permitted: No
Wet space: No
Addition: No
Conversion: No

7 Floor 2 - Bath



Dimensions: 10'5" x 9'1"
Area: 88 sq. ft
Counted as living area: Yes

Heated: Yes
Finished: Yes
Enclosed: Yes
Contiguous: Yes
Permitted: Yes
Wet space: Yes
Addition: No
Conversion: No

8 Floor 2 - Balcony



Dimensions: 18'7" x 16'6"
Area: 236 sq. ft
Counted as living area: No

Heated: No
Finished: No
Enclosed: No
Contiguous: Yes
Permitted: Yes
Wet space: No
Addition: No
Conversion: No

7400 E Gainey Club Road,Unit 230,Scottsdale,Arizona,United States, Unit 230

9 Floor 2 - Breakfast Nook



Dimensions: 10'0" x 10'3"
Area: 102 sq. ft
Counted as living area: Yes

Heated: Yes
Finished: Yes
Enclosed: Yes
Contiguous: Yes
Permitted: Yes
Wet space: No
Addition: No
Conversion: No

10 Floor 2 - Bath



Dimensions: 8'8" x 4'10"
Area: 47 sq. ft
Counted as living area: Yes

Heated: Yes
Finished: Yes
Enclosed: Yes
Contiguous: Yes
Permitted: Yes
Wet space: Yes
Addition: No
Conversion: No

11 Floor 2 - Bedroom



Dimensions: 13'6" x 10'9"
Area: 131 sq. ft
Counted as living area: Yes

Heated: Yes
Finished: Yes
Enclosed: Yes
Contiguous: Yes
Permitted: Yes
Wet space: No
Addition: No
Conversion: No

7400 E Gainey Club Road,Unit 230,Scottsdale,Arizona,United States, Unit 230

12 Floor 2 - Kitchen



Dimensions: 11'4" x 10'9"
Area: 121 sq. ft
Counted as living area: Yes

Heated: Yes
Finished: Yes
Enclosed: Yes
Contiguous: Yes
Permitted: Yes
Wet space: No
Addition: No
Conversion: No

13 Floor 2 - Living Room



Dimensions: 21'9" x 16'1"
Area: 323 sq. ft
Counted as living area: Yes

Heated: Yes
Finished: Yes
Enclosed: Yes
Contiguous: Yes
Permitted: Yes
Wet space: No
Addition: No
Conversion: No

14 Floor 2 - Balcony



Dimensions: 7'5" x 6'9"
Area: 50 sq. ft
Counted as living area: No

Heated: No
Finished: No
Enclosed: No
Contiguous: Yes
Permitted: Yes
Wet space: No
Addition: No
Conversion: No

7400 E Gainey Club Road, Unit 230, Scottsdale, Arizona, United States, Unit 230

15 Floor 2 - Bath



Dimensions: 7'5" x 3'0"
Area: 22 sq. ft
Counted as living area: Yes

Heated: Yes
Finished: Yes
Enclosed: Yes
Contiguous: Yes
Permitted: Yes
Wet space: Yes
Addition: No
Conversion: No

16 Floor 2 - Primary Bedroom



Dimensions: 14'7" x 17'2"
Area: 202 sq. ft
Counted as living area: Yes

Heated: Yes
Finished: Yes
Enclosed: Yes
Contiguous: Yes
Permitted: Yes
Wet space: No
Addition: No
Conversion: No

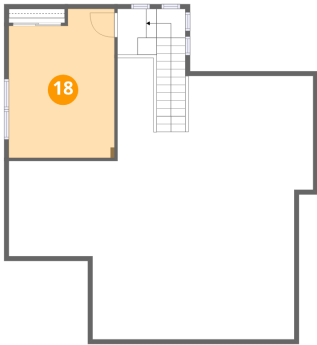
17 Floor 2 - W.I.C.



Dimensions: 7'5" x 6'6"
Area: 46 sq. ft
Counted as living area: Yes

Heated: Yes
Finished: Yes
Enclosed: Yes
Contiguous: Yes
Permitted: Yes
Wet space: No
Addition: No
Conversion: No

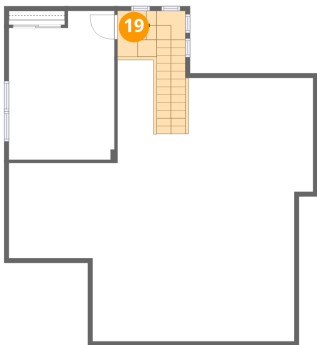
18 Floor 3 - Bedroom



Dimensions: 11'5" x 16'0"
Area: 171 sq. ft
Counted as living area: Yes

Heated: Yes
Finished: Yes
Enclosed: Yes
Contiguous: Yes
Permitted: Yes
Wet space: No
Addition: No
Conversion: No

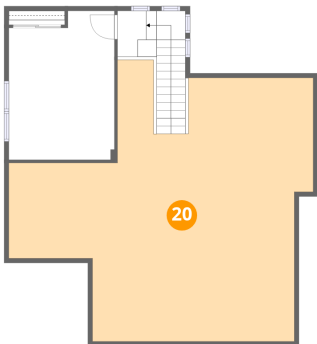
19 Floor 3 - Hall



Dimensions: 3'1" x 4'11"
Area: 68 sq. ft
Counted as living area: Yes

Heated: Yes
Finished: Yes
Enclosed: Yes
Contiguous: Yes
Permitted: Yes
Wet space: No
Addition: No
Conversion: No

20 Floor 3 - Open To Below



Dimensions: 32'10" x 30'4"
Area: 694 sq. ft
Counted as living area: No

Heated: No
Finished: No
Enclosed: No
Contiguous: Yes
Permitted: No
Wet space: No
Addition: No
Conversion: No