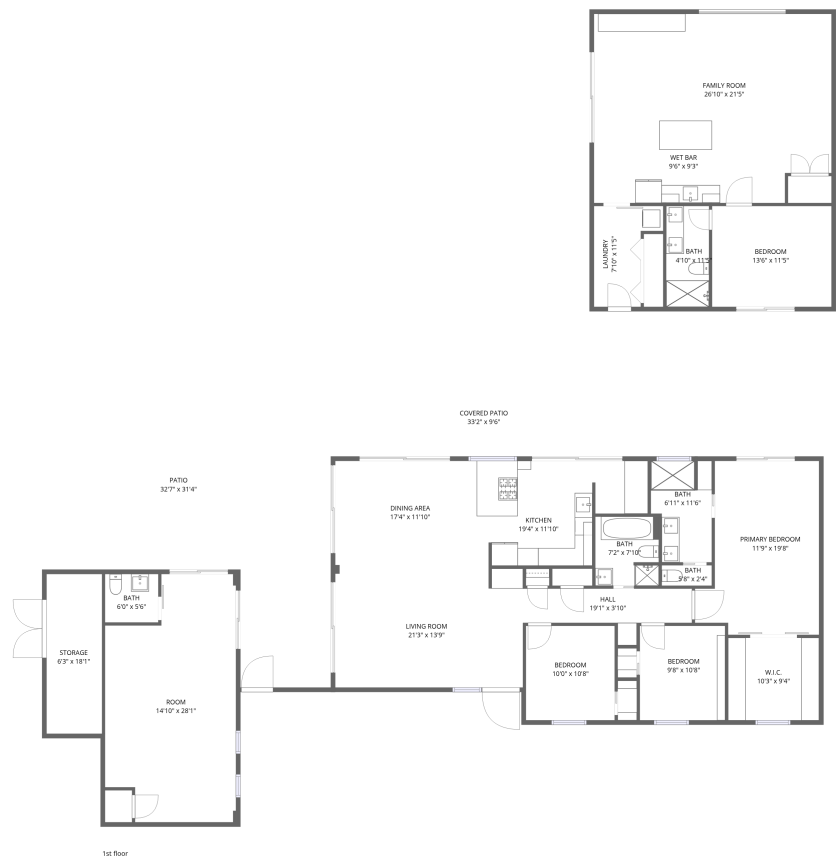


Home data report

3520 East Onyx Avenue, Phoenix, Maricopa County, Arizona, United States, 85028



Total Area: 2417 sq. ft

1st Floor: 2417 sq. ft

Excluded: Room 375 sq. ft, Undefined 11 sq. ft, Storage 115 sq. ft, Bath 33 sq. ft, Covered patio 302 sq. ft, Patio 724 sq. ft, Walls: 197 sq. ft

Property summary

 **1** Floors

 **4** Bedrooms

 **3** Bathrooms

 **1** Half baths

Home data report

3520 East Onyx Avenue, Phoenix, Maricopa County, Arizona, United States, 85028



Room dimensions

Floor 1 Total:2417sqft   Excluded: 1560sqft

#		Dimensions	sqft	Counted as living area
1	Bedroom	13'6" x 11'5"	154 sq. ft	Yes
2	Bath	5'8" x 2'4"	13 sq. ft	Yes
3	Wet Bar	9'6" x 9'3"	88 sq. ft	Yes
4	Living Room	21'3" x 13'9"	291 sq. ft	Yes
5	Room	14'10" x 28'1"	415 sq. ft	No
6	Covered Patio	33'2" x 9'6"	316 sq. ft	No
7	Family Room	26'10" x 21'5"	574 sq. ft	Yes
8	Bath	6'11" x 11'6"	79 sq. ft	Yes
9	Bedroom	9'8" x 10'8"	103 sq. ft	Yes
10	Laundry	7'10" x 11'5"	89 sq. ft	Yes
11	Dining Area	17'4" x 11'10"	205 sq. ft	Yes

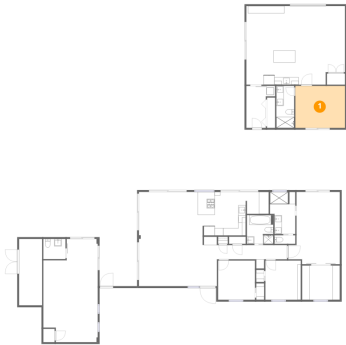
## Home data report

**3520 East Onyx Avenue, Phoenix, Maricopa County, Arizona,  
United States, 85028**

#		Dimensions	sqft	Counted as living area
12	Storage	6'3" x 18'1"	113 sq. ft	No
13	Kitchen	19'4" x 11'10"	229 sq. ft	Yes
14	Bath	7'2" x 7'10"	56 sq. ft	Yes
15	Patio	32'7" x 31'4"	1023 sq. ft	No
16	Hall	19'1" x 3'10"	74 sq. ft	Yes
17	Bath	6'0" x 5'6"	33 sq. ft	No
18	W.I.C.	10'3" x 9'4"	96 sq. ft	Yes
19	Primary Bedroom	11'9" x 19'8"	232 sq. ft	Yes
20	Bath	4'10" x 11'5"	55 sq. ft	Yes
21	Bedroom	10'0" x 10'8"	107 sq. ft	Yes

3520 East Onyx Avenue, Phoenix, Maricopa County, Arizona,  
United States, 85028

1 Floor 1 - Bedroom



Dimensions: 13'6" x 11'5"  
Area: 154 sq. ft  
Counted as living area: Yes

Heated: Yes  
Finished: Yes  
Enclosed: Yes  
Contiguous: Yes  
Permitted: Yes  
Wet space: No  
Addition: No  
Conversion: No

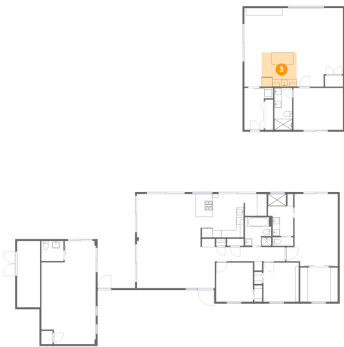
2 Floor 1 - Bath



Dimensions: 5'8" x 2'4"  
Area: 13 sq. ft  
Counted as living area: Yes

Heated: Yes  
Finished: Yes  
Enclosed: Yes  
Contiguous: Yes  
Permitted: Yes  
Wet space: No  
Addition: No  
Conversion: No

3 Floor 1 - Wet Bar



Dimensions: 9'6" x 9'3"  
Area: 88 sq. ft  
Counted as living area: Yes

Heated: Yes  
Finished: Yes  
Enclosed: Yes  
Contiguous: Yes  
Permitted: Yes  
Wet space: No  
Addition: No  
Conversion: No

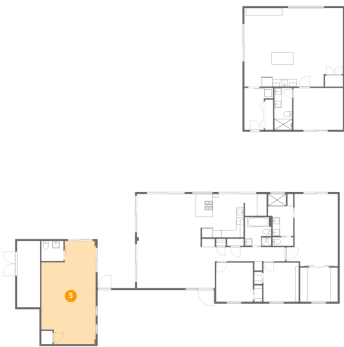
4 Floor 1 - Living Room



Dimensions: 21'3" x 13'9"  
Area: 291 sq. ft  
Counted as living area: Yes

Heated: Yes  
Finished: Yes  
Enclosed: Yes  
Contiguous: Yes  
Permitted: Yes  
Wet space: No  
Addition: No  
Conversion: No

5 Floor 1 - Room

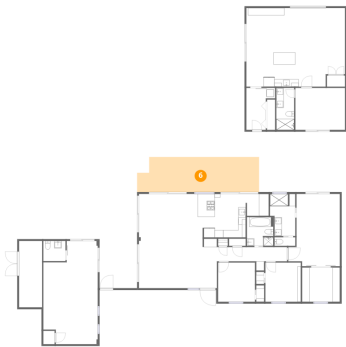


Dimensions: 14'10" x 28'1"  
Area: 415 sq. ft  
Counted as living area: No

Heated: Yes  
Finished: No  
Enclosed: Yes  
Contiguous: Yes  
Permitted: Yes  
Wet space: No  
Addition: No  
Conversion: No

3520 East Onyx Avenue, Phoenix, Maricopa County, Arizona,  
United States, 85028

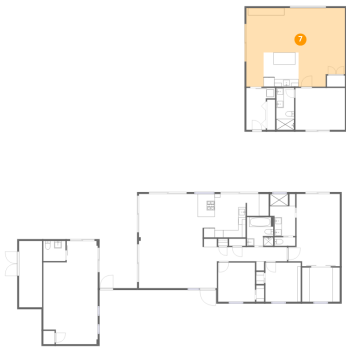
6 Floor 1 - Covered Patio



Dimensions: 33'2" x 9'6"  
Area: 316 sq. ft  
Counted as living area: No

Heated: No  
Finished: No  
Enclosed: No  
Contiguous: Yes  
Permitted: Yes  
Wet space: No  
Addition: No  
Conversion: No

7 Floor 1 - Family Room



Dimensions: 26'10" x 21'5"  
Area: 574 sq. ft  
Counted as living area: Yes

Heated: Yes  
Finished: Yes  
Enclosed: Yes  
Contiguous: Yes  
Permitted: Yes  
Wet space: No  
Addition: No  
Conversion: No

8 Floor 1 - Bath

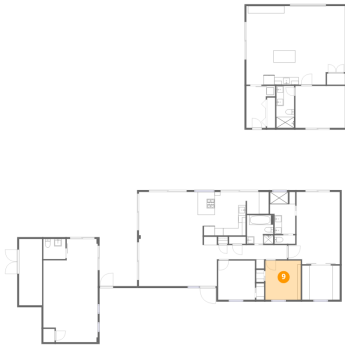


Dimensions: 6'11" x 11'6"  
Area: 79 sq. ft  
Counted as living area: Yes

Heated: Yes  
Finished: Yes  
Enclosed: Yes  
Contiguous: Yes  
Permitted: Yes  
Wet space: Yes  
Addition: No  
Conversion: No

3520 East Onyx Avenue, Phoenix, Maricopa County, Arizona,  
United States, 85028

## 9 Floor 1 - Bedroom



Dimensions: 9'8" x 10'8"  
Area: 103 sq. ft  
Counted as living area: Yes

Heated: Yes  
Finished: Yes  
Enclosed: Yes  
Contiguous: Yes  
Permitted: Yes  
Wet space: No  
Addition: No  
Conversion: No

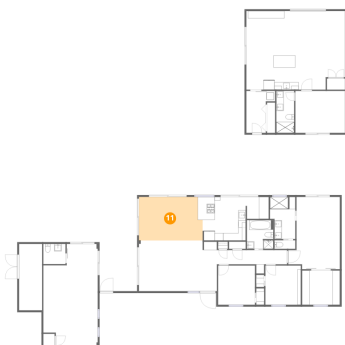
## 10 Floor 1 - Laundry



Dimensions: 7'10" x 11'5"  
Area: 89 sq. ft  
Counted as living area: Yes

Heated: Yes  
Finished: Yes  
Enclosed: Yes  
Contiguous: Yes  
Permitted: Yes  
Wet space: No  
Addition: No  
Conversion: No

## 11 Floor 1 - Dining Area

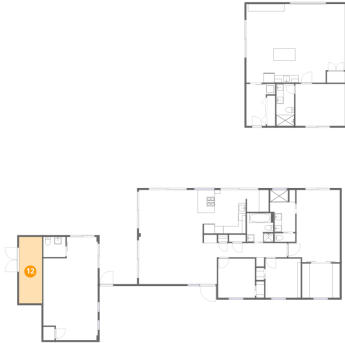


Dimensions: 17'4" x 11'10"  
Area: 205 sq. ft  
Counted as living area: Yes

Heated: Yes  
Finished: Yes  
Enclosed: Yes  
Contiguous: Yes  
Permitted: Yes  
Wet space: No  
Addition: No  
Conversion: No

3520 East Onyx Avenue, Phoenix, Maricopa County, Arizona,  
United States, 85028

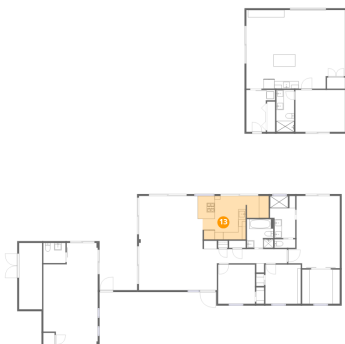
## 12 Floor 1 - Storage



Dimensions: 6'3" x 18'1"  
Area: 113 sq. ft  
Counted as living area: No

Heated: No  
Finished: No  
Enclosed: No  
Contiguous: Yes  
Permitted: Yes  
Wet space: No  
Addition: No  
Conversion: No

## 13 Floor 1 - Kitchen



Dimensions: 19'4" x 11'10"  
Area: 229 sq. ft  
Counted as living area: Yes

Heated: Yes  
Finished: Yes  
Enclosed: Yes  
Contiguous: Yes  
Permitted: Yes  
Wet space: No  
Addition: No  
Conversion: No

## 14 Floor 1 - Bath

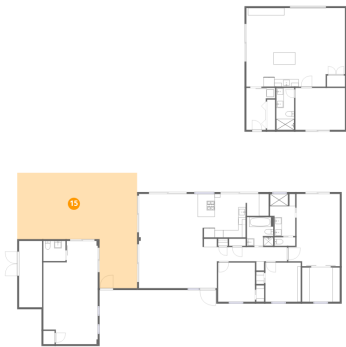


Dimensions: 7'2" x 7'10"  
Area: 56 sq. ft  
Counted as living area: Yes

Heated: Yes  
Finished: Yes  
Enclosed: Yes  
Contiguous: Yes  
Permitted: Yes  
Wet space: Yes  
Addition: No  
Conversion: No



15 Floor 1 - Patio



Dimensions: 32'7" x 31'4"  
Area: 1023 sq. ft  
Counted as living area: No

Heated: No  
Finished: No  
Enclosed: No  
Contiguous: Yes  
Permitted: Yes  
Wet space: No  
Addition: No  
Conversion: No

16 Floor 1 - Hall



Dimensions: 19'1" x 3'10"  
Area: 74 sq. ft  
Counted as living area: Yes

Heated: Yes  
Finished: Yes  
Enclosed: Yes  
Contiguous: Yes  
Permitted: Yes  
Wet space: No  
Addition: No  
Conversion: No

17 Floor 1 - Bath



Dimensions: 6'0" x 5'6"  
Area: 33 sq. ft  
Counted as living area: No

Heated: Yes  
Finished: No  
Enclosed: Yes  
Contiguous: Yes  
Permitted: Yes  
Wet space: Yes  
Addition: No  
Conversion: No

## Home data report

3520 East Onyx Avenue, Phoenix, Maricopa County, Arizona,  
United States, 85028

### 18 Floor 1 - W.I.C.

---

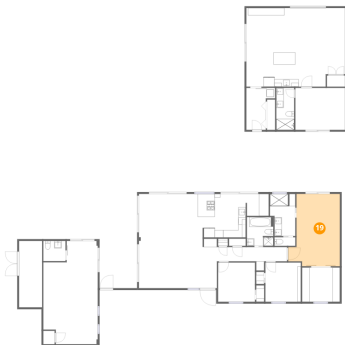


Dimensions: 10'3" x 9'4"  
Area: 96 sq. ft  
Counted as living area: Yes

Heated: Yes  
Finished: Yes  
Enclosed: Yes  
Contiguous: Yes  
Permitted: Yes  
Wet space: No  
Addition: No  
Conversion: No

### 19 Floor 1 - Primary Bedroom

---



Dimensions: 11'9" x 19'8"  
Area: 232 sq. ft  
Counted as living area: Yes

Heated: Yes  
Finished: Yes  
Enclosed: Yes  
Contiguous: Yes  
Permitted: Yes  
Wet space: No  
Addition: No  
Conversion: No

### 20 Floor 1 - Bath

---



Dimensions: 4'10" x 11'5"  
Area: 55 sq. ft  
Counted as living area: Yes

Heated: Yes  
Finished: Yes  
Enclosed: Yes  
Contiguous: Yes  
Permitted: Yes  
Wet space: Yes  
Addition: No  
Conversion: No

3520 East Onyx Avenue, Phoenix, Maricopa County, Arizona,  
United States, 85028

**21** Floor 1 - Bedroom



Dimensions: 10'0" x 10'8"  
Area: 107 sq. ft  
Counted as living area: Yes

Heated: Yes  
Finished: Yes  
Enclosed: Yes  
Contiguous: Yes  
Permitted: Yes  
Wet space: No  
Addition: No  
Conversion: No