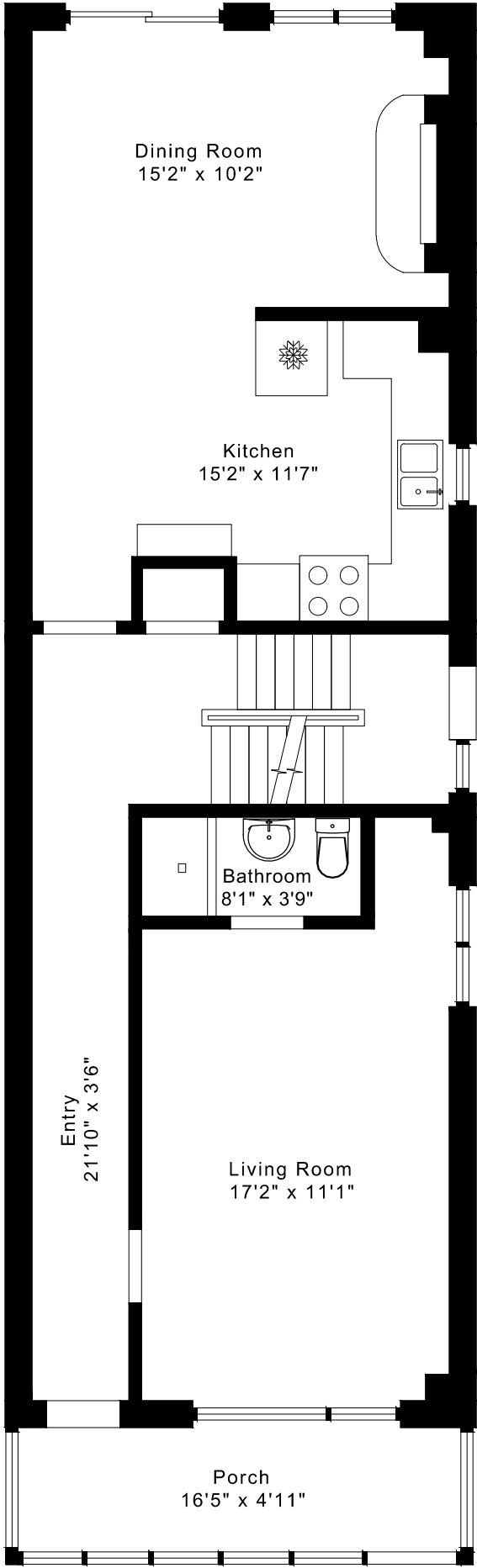
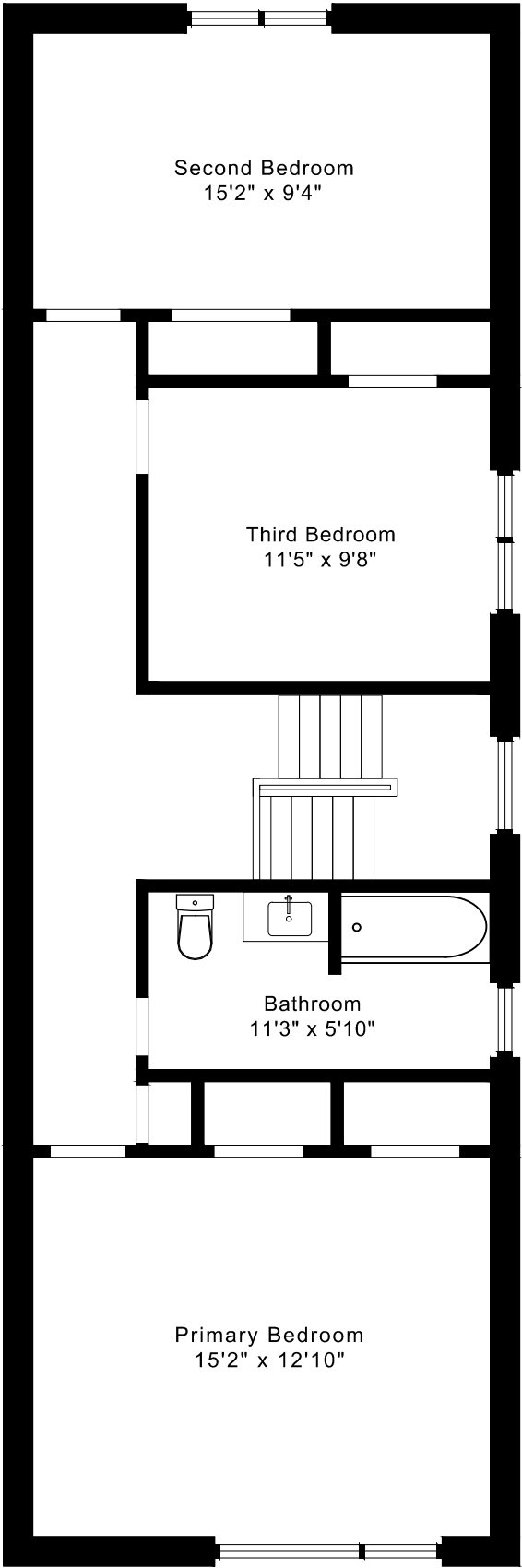


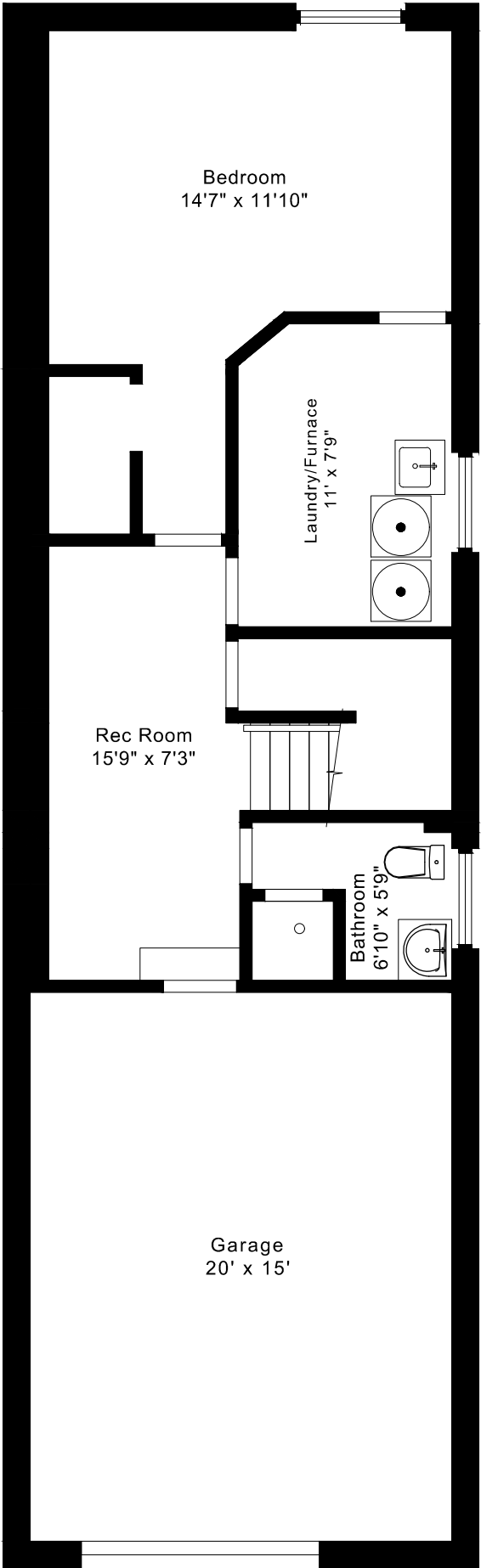
78 HEALE AVENUE  
FLOOR PLANS



MAIN FLOOR  
970 SQUARE FEET



SECOND FLOOR  
895 SQUARE FEET



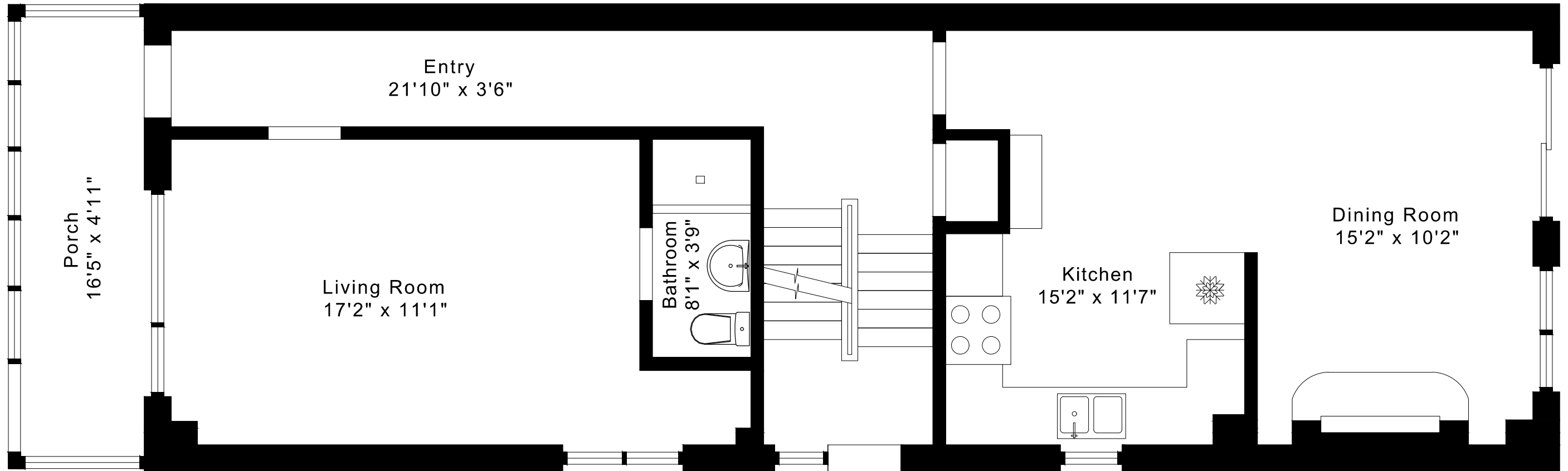
LOWER FLOOR  
615 SQUARE FEET

1865 sq ft + 615 sq ft  
BELOW GRADE

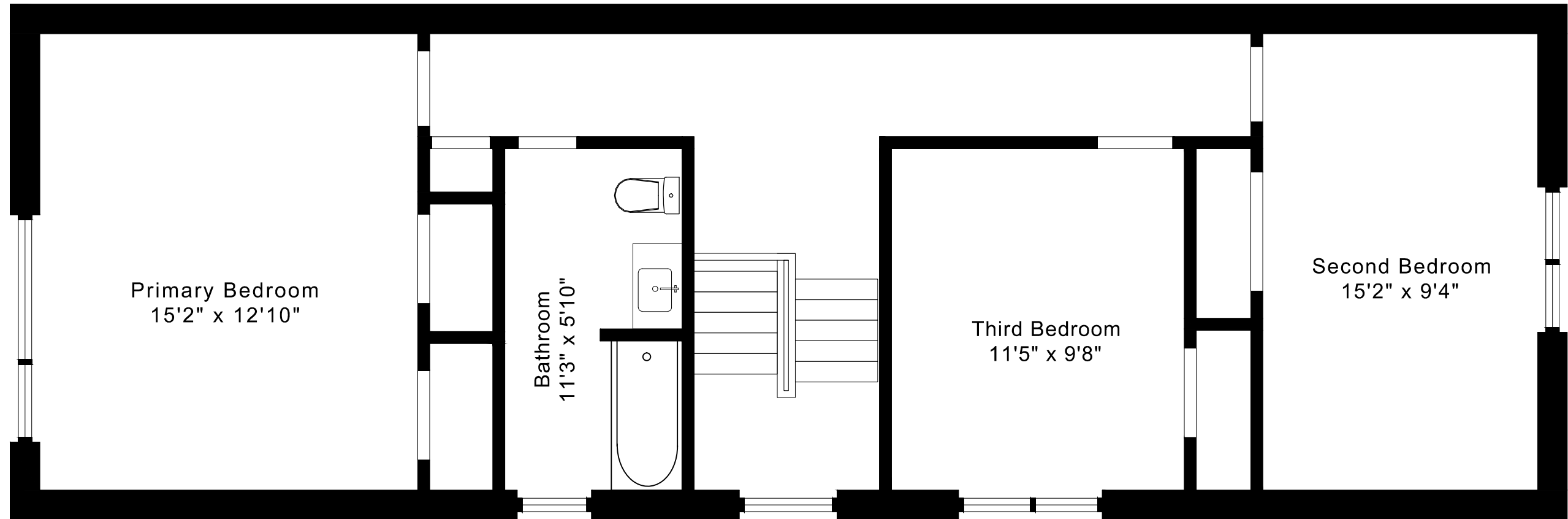
# 78 HEALE AVENUE

## FLOOR PLANS

MAIN FLOOR 970 SQUARE FEET



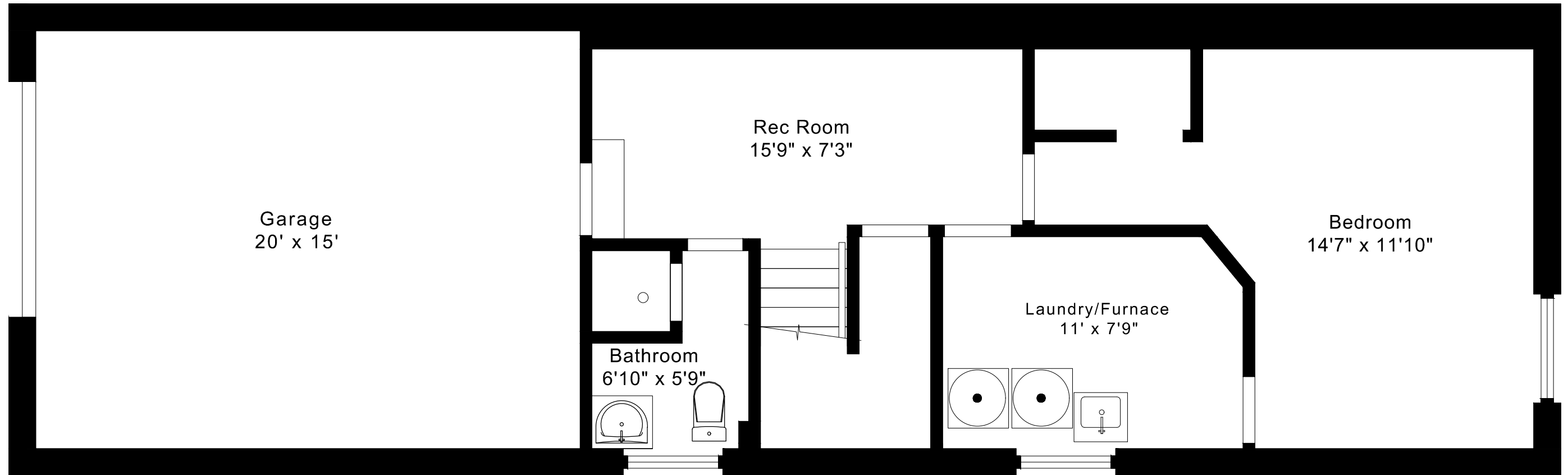
78 HEALE AVENUE  
FLOOR PLANS  
SECOND FLOOR 895 SQUARE FEET



# 78 HEALE AVENUE

## FLOOR PLANS

LOWER FLOOR 615 SQUARE FEET



78 HEALE AVENUE ROOM MEASUREMENTS

Floor	Room	Imperial						Metric [m]		
		Length		Width		Height		Length	Width	Height
		Feet	Inches	Feet	Inches	Feet	Inches			
Second	Primary Bedroom	15	2	12	10	8	1	4,62	3,91	2,46
	Second Bedroom	15	2	9	4	8	1	4,62	2,84	2,46
	Third Bedroom	11	5	9	8	8	1	3,48	2,95	2,46
	Bathroom	11	3	5	10	8	1	3,43	1,78	2,46
Main	Porch	16	5	4	11	7	8	5,00	1,50	2,34
	Entry	21	10	3	6	8	1	6,65	1,07	2,46
	Living Room	17	2	11	1	8	1	5,23	3,38	2,46
	Dining Room	15	2	10	2	8	1	4,62	3,10	2,46
	Kitchen	15	2	11	7	8	1	4,62	3,53	2,46
	Bathroom	8	1	3	9	8	1	2,46	1,14	2,46
Lower	Rec Room	15	9	7	3	7	10	4,80	2,21	2,39
	Bedroom	14	7	11	10	7	10	4,45	3,61	2,39
	Laundry/Furnace	11	0	7	9	7	10	3,35	2,36	2,39
	Bathroom	6	10	5	9	7	10	2,08	1,75	2,39
	Garage	20	0	15	0	6	6	6,10	4,57	1,98

The following is a disclaimer regarding the approximate nature of dimensions and floor areas listed in this document:

---

**Disclaimer:**

The dimensions and floor areas listed in this document are provided as an estimate only and are intended to be used for illustration purposes only. These measurements are not necessarily meant to be a perfect representation of the actual space.

**Notes regarding measurement methods and accuracy:**

The utilization of laser measurement technology during the 3D model capturing process at the location provides an accurate representation of floor plans, with a typical margin of error of 3-5%. For the most accurate and official measurement data, it is advised to consult official documents such as MPAC records, builder's pre-construction plans, or data from certified measurement companies.

Exterior wall thickness is included in the calculation of the overall square footage and is considered as a component of the footprint. The wall thickness measurement is obtained onsite whenever possible, or estimated in the event where obtaining onsite measurements is not possible, such as in the case of condominium buildings where wall thickness may vary throughout the building.