

Home data report

5753 South Romano, Mesa, Maricopa County, Arizona, United States, 85212





Total Area: 2862 sq. ft
1st Floor: 1334 sq. ft, 2nd Floor: 1528 sq. ft
Excluded: Garage 662 sq. ft, Open to below 157 sq. ft, Walls: 225 sq. ft

Property summary

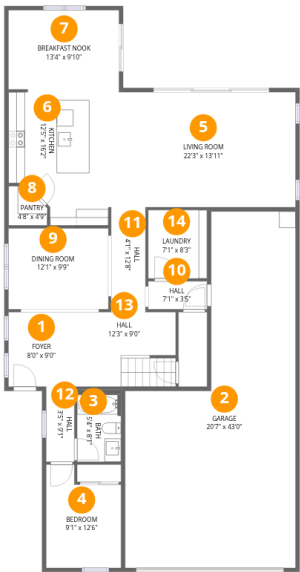
 **2** Floors

 **5** Bedrooms

 **3** Bathrooms

 **1** Garages

5753 South Romano, Mesa, Maricopa County, Arizona, United States, 85212



Room dimensions

Floor 1 Total:1334sqft Excluded: 662sqft

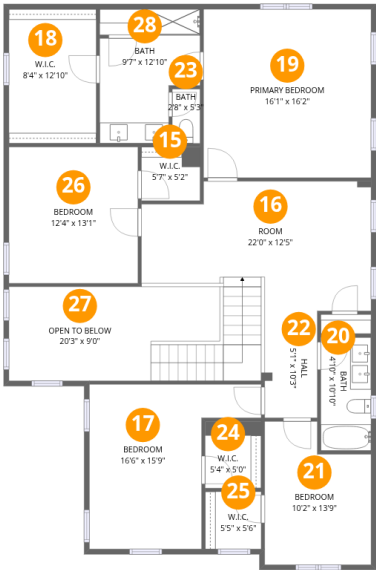
#		Dimensions	sqft	Counted as living area
1	Foyer	8'0" x 9'0"	72 sq. ft	Yes
2	Garage	20'7" x 43'0"	662 sq. ft	No
3	Bath	5'4" x 8'1"	46 sq. ft	Yes
4	Bedroom	9'1" x 12'6"	99 sq. ft	Yes
5	Living Room	22'3" x 13'11"	310 sq. ft	Yes
6	Kitchen	12'5" x 16'2"	178 sq. ft	Yes
7	Breakfast Nook	13'4" x 9'10"	132 sq. ft	Yes
8	Pantry	4'8" x 4'9"	19 sq. ft	Yes
9	Dining Room	12'1" x 9'9"	118 sq. ft	Yes
10	Hall	7'1" x 3'5"	24 sq. ft	Yes
11	Hall	4'1" x 12'8"	53 sq. ft	Yes

Home data report

5753 South Romano, Mesa, Maricopa County, Arizona, United States, 85212

#		Dimensions	sqft	Counted as living area
12	Hall	3'5" x 9'1"	31 sq. ft	Yes
13	Hall	12'3" x 9'0"	109 sq. ft	Yes
14	Laundry	7'1" x 8'3"	59 sq. ft	Yes

5753 South Romano, Mesa, Maricopa County, Arizona, United States, 85212



Room dimensions

Floor 2 Total:1528sqft Excluded: 157sqft

#		Dimensions	sqft	Counted as living area
15	W.I.C.	5'7" x 5'2"	29 sq. ft	Yes
16	Room	22'0" x 12'5"	243 sq. ft	Yes
17	Bedroom	16'6" x 15'9"	188 sq. ft	Yes
18	W.I.C.	8'4" x 12'10"	108 sq. ft	Yes
19	Primary Bedroom	16'1" x 16'2"	259 sq. ft	Yes
20	Bath	4'10" x 10'10"	52 sq. ft	Yes
21	Bedroom	10'2" x 13'9"	124 sq. ft	Yes
22	Hall	5'1" x 10'3"	105 sq. ft	Yes
23	Bath	2'8" x 5'3"	14 sq. ft	Yes
24	W.I.C.	5'4" x 5'0"	34 sq. ft	Yes
25	W.I.C.	5'5" x 5'6"	30 sq. ft	Yes

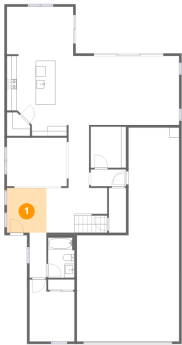
Home data report

5753 South Romano, Mesa, Maricopa County, Arizona, United States, 85212

#		Dimensions	sqft	Counted as living area
26	Bedroom	12'4" x 13'1"	161 sq. ft	Yes
27	Open To Below	20'3" x 9'0"	157 sq. ft	No
28	Bath	9'7" x 12'10"	95 sq. ft	Yes

5753 South Romano, Mesa, Maricopa County, Arizona, United States, 85212

1 Floor 1 - Foyer



Dimensions: 8'0" x 9'0"
Area: 72 sq. ft
Counted as living area: Yes

Heated: Yes
Finished: Yes
Enclosed: Yes
Contiguous: Yes
Permitted: Yes
Wet space: No
Addition: No
Conversion: No

2 Floor 1 - Garage



Dimensions: 20'7" x 43'0"
Area: 662 sq. ft
Counted as living area: No

Heated: No
Finished: No
Enclosed: Yes
Contiguous: Yes
Permitted: Yes
Wet space: No
Addition: No
Conversion: No

5753 South Romano, Mesa, Maricopa County, Arizona, United States, 85212

3 Floor 1 - Bath



Dimensions: 5'4" x 8'1"
Area: 46 sq. ft
Counted as living area: Yes

Heated: Yes
Finished: Yes
Enclosed: Yes
Contiguous: Yes
Permitted: Yes
Wet space: Yes
Addition: No
Conversion: No

4 Floor 1 - Bedroom



Dimensions: 9'1" x 12'6"
Area: 99 sq. ft
Counted as living area: Yes

Heated: Yes
Finished: Yes
Enclosed: Yes
Contiguous: Yes
Permitted: Yes
Wet space: No
Addition: No
Conversion: No

5 Floor 1 - Living Room



Dimensions: 22'3" x 13'11"
Area: 310 sq. ft
Counted as living area: Yes

Heated: Yes
Finished: Yes
Enclosed: Yes
Contiguous: Yes
Permitted: Yes
Wet space: No
Addition: No
Conversion: No

5753 South Romano, Mesa, Maricopa County, Arizona, United States, 85212

6 Floor 1 - Kitchen



Dimensions: 12'5" x 16'2"
Area: 178 sq. ft
Counted as living area: Yes

Heated: Yes
Finished: Yes
Enclosed: Yes
Contiguous: Yes
Permitted: Yes
Wet space: No
Addition: No
Conversion: No

7 Floor 1 - Breakfast Nook



Dimensions: 13'4" x 9'10"
Area: 132 sq. ft
Counted as living area: Yes

Heated: Yes
Finished: Yes
Enclosed: Yes
Contiguous: Yes
Permitted: Yes
Wet space: No
Addition: No
Conversion: No

8 Floor 1 - Pantry



Dimensions: 4'8" x 4'9"
Area: 19 sq. ft
Counted as living area: Yes

Heated: Yes
Finished: Yes
Enclosed: Yes
Contiguous: Yes
Permitted: Yes
Wet space: No
Addition: No
Conversion: No

5753 South Romano, Mesa, Maricopa County, Arizona, United States, 85212

9 Floor 1 - Dining Room



Dimensions: 12'1" x 9'9"
Area: 118 sq. ft
Counted as living area: Yes

Heated: Yes
Finished: Yes
Enclosed: Yes
Contiguous: Yes
Permitted: Yes
Wet space: No
Addition: No
Conversion: No

10 Floor 1 - Hall



Dimensions: 7'1" x 3'5"
Area: 24 sq. ft
Counted as living area: Yes

Heated: Yes
Finished: Yes
Enclosed: Yes
Contiguous: Yes
Permitted: Yes
Wet space: No
Addition: No
Conversion: No

11 Floor 1 - Hall

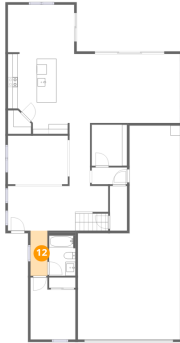


Dimensions: 4'1" x 12'8"
Area: 53 sq. ft
Counted as living area: Yes

Heated: Yes
Finished: Yes
Enclosed: Yes
Contiguous: Yes
Permitted: Yes
Wet space: No
Addition: No
Conversion: No

5753 South Romano, Mesa, Maricopa County, Arizona, United States, 85212

12 Floor 1 - Hall



Dimensions: 3'5" x 9'1"
Area: 31 sq. ft
Counted as living area: Yes

Heated: Yes
Finished: Yes
Enclosed: Yes
Contiguous: Yes
Permitted: Yes
Wet space: No
Addition: No
Conversion: No

13 Floor 1 - Hall



Dimensions: 12'3" x 9'0"
Area: 109 sq. ft
Counted as living area: Yes

Heated: Yes
Finished: Yes
Enclosed: Yes
Contiguous: Yes
Permitted: Yes
Wet space: No
Addition: No
Conversion: No

14 Floor 1 - Laundry

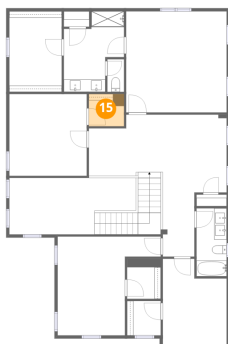


Dimensions: 7'1" x 8'3"
Area: 59 sq. ft
Counted as living area: Yes

Heated: Yes
Finished: Yes
Enclosed: Yes
Contiguous: Yes
Permitted: Yes
Wet space: No
Addition: No
Conversion: No

5753 South Romano, Mesa, Maricopa County, Arizona, United States, 85212

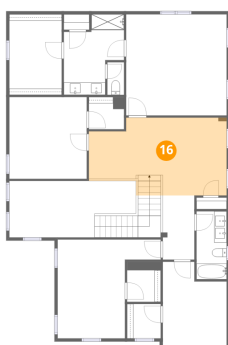
15 Floor 2 - W.I.C.



Dimensions: 5'7" x 5'2"
Area: 29 sq. ft
Counted as living area: Yes

Heated: Yes
Finished: Yes
Enclosed: Yes
Contiguous: Yes
Permitted: Yes
Wet space: No
Addition: No
Conversion: No

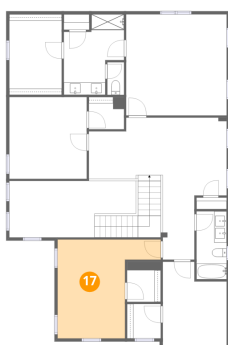
16 Floor 2 - Room



Dimensions: 22'0" x 12'5"
Area: 243 sq. ft
Counted as living area: Yes

Heated: Yes
Finished: Yes
Enclosed: Yes
Contiguous: Yes
Permitted: Yes
Wet space: No
Addition: No
Conversion: No

17 Floor 2 - Bedroom

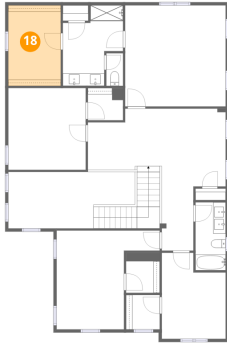


Dimensions: 16'6" x 15'9"
Area: 188 sq. ft
Counted as living area: Yes

Heated: Yes
Finished: Yes
Enclosed: Yes
Contiguous: Yes
Permitted: Yes
Wet space: No
Addition: No
Conversion: No

5753 South Romano, Mesa, Maricopa County, Arizona, United States, 85212

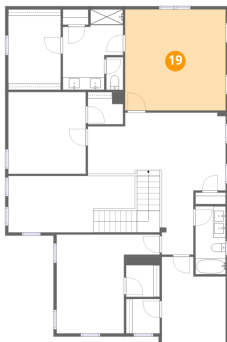
18 Floor 2 - W.I.C.



Dimensions: 8'4" x 12'10"
Area: 108 sq. ft
Counted as living area: Yes

Heated: Yes
Finished: Yes
Enclosed: Yes
Contiguous: Yes
Permitted: Yes
Wet space: No
Addition: No
Conversion: No

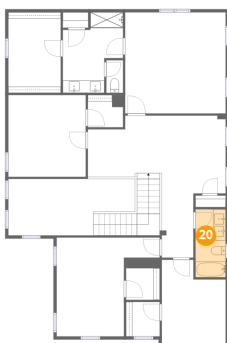
19 Floor 2 - Primary Bedroom



Dimensions: 16'1" x 16'2"
Area: 259 sq. ft
Counted as living area: Yes

Heated: Yes
Finished: Yes
Enclosed: Yes
Contiguous: Yes
Permitted: Yes
Wet space: No
Addition: No
Conversion: No

20 Floor 2 - Bath



Dimensions: 4'10" x 10'10"
Area: 52 sq. ft
Counted as living area: Yes

Heated: Yes
Finished: Yes
Enclosed: Yes
Contiguous: Yes
Permitted: Yes
Wet space: Yes
Addition: No
Conversion: No

5753 South Romano, Mesa, Maricopa County, Arizona, United States, 85212

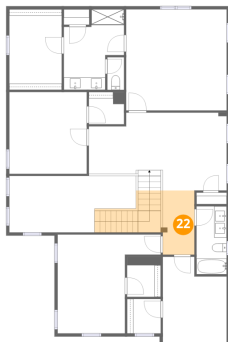
21 Floor 2 - Bedroom



Dimensions: 10'2" x 13'9"
Area: 124 sq. ft
Counted as living area: Yes

Heated: Yes
Finished: Yes
Enclosed: Yes
Contiguous: Yes
Permitted: Yes
Wet space: No
Addition: No
Conversion: No

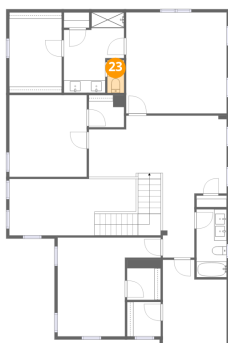
22 Floor 2 - Hall



Dimensions: 5'1" x 10'3"
Area: 105 sq. ft
Counted as living area: Yes

Heated: Yes
Finished: Yes
Enclosed: Yes
Contiguous: Yes
Permitted: Yes
Wet space: No
Addition: No
Conversion: No

23 Floor 2 - Bath



Dimensions: 2'8" x 5'3"
Area: 14 sq. ft
Counted as living area: Yes

Heated: Yes
Finished: Yes
Enclosed: Yes
Contiguous: Yes
Permitted: Yes
Wet space: Yes
Addition: No
Conversion: No

5753 South Romano, Mesa, Maricopa County, Arizona, United States, 85212

24 Floor 2 - W.I.C.



Dimensions: 5'4" x 5'0"
Area: 34 sq. ft
Counted as living area: Yes

Heated: Yes
Finished: Yes
Enclosed: Yes
Contiguous: Yes
Permitted: Yes
Wet space: No
Addition: No
Conversion: No

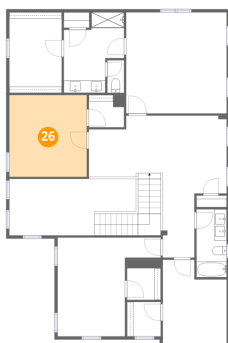
25 Floor 2 - W.I.C.



Dimensions: 5'5" x 5'6"
Area: 30 sq. ft
Counted as living area: Yes

Heated: Yes
Finished: Yes
Enclosed: Yes
Contiguous: Yes
Permitted: Yes
Wet space: No
Addition: No
Conversion: No

26 Floor 2 - Bedroom

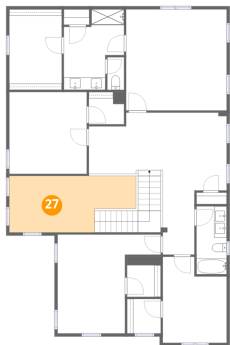


Dimensions: 12'4" x 13'1"
Area: 161 sq. ft
Counted as living area: Yes

Heated: Yes
Finished: Yes
Enclosed: Yes
Contiguous: Yes
Permitted: Yes
Wet space: No
Addition: No
Conversion: No

5753 South Romano, Mesa, Maricopa County, Arizona, United States, 85212

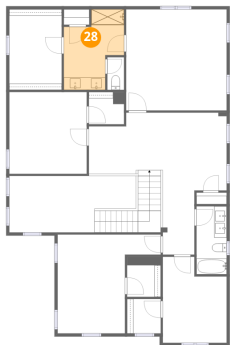
27 Floor 2 - Open To Below



Dimensions: 20'3" x 9'0"
Area: 157 sq. ft
Counted as living area: No

Heated: No
Finished: No
Enclosed: No
Contiguous: Yes
Permitted: No
Wet space: No
Addition: No
Conversion: No

28 Floor 2 - Bath



Dimensions: 9'7" x 12'10"
Area: 95 sq. ft
Counted as living area: Yes

Heated: Yes
Finished: Yes
Enclosed: Yes
Contiguous: Yes
Permitted: Yes
Wet space: Yes
Addition: No
Conversion: No