

Home data report

13002 North 28th Place, Shadow Mountain, Phoenix, Maricopa County, Arizona, United States, 85032




Total Area: 1980 sq. ft


1st Floor: 1980 sq. ft

Excluded: Garage 332 sq. ft, Walls: 123 sq. ft

Property summary

 1 Floors

 3 Bedrooms

 2 Bathrooms

 1 Garages

Home data report

13002 North 28th Place, Shadow Mountain, Phoenix, Maricopa County, Arizona, United States, 85032



Room dimensions

Floor 1

Total:1980sqft Excluded: 332sqft

#		Dimensions	sqft	Counted as living area
1	Bath	7'11" x 4'10"	38 sq. ft	Yes
2	Garage	19'0" x 17'5"	332 sq. ft	No
3	Family Room	30'9" x 18'1"	536 sq. ft	Yes
4	Utility	5'5" x 10'9"	58 sq. ft	Yes
5	Bath	7'11" x 7'6"	58 sq. ft	Yes
6	Hall	7'11" x 3'5"	26 sq. ft	Yes
7	Pantry	5'5" x 7'5"	40 sq. ft	Yes
8	Primary Bedroom	13'10" x 11'10"	148 sq. ft	Yes
9	Kitchen	11'1" x 18'6"	205 sq. ft	Yes
10	Dining Area	9'5" x 18'9"	176 sq. ft	Yes
11	Living Room	15'0" x 17'8"	264 sq. ft	Yes

Home data report

13002 North 28th Place, Shadow Mountain, Phoenix, Maricopa County, Arizona, United States, 85032

#		Dimensions	sqft	Counted as living area
12	Bedroom	10'4" x 11'0"	114 sq. ft	Yes
13	Hall	3'2" x 13'9"	43 sq. ft	Yes
14	Bedroom	13'10" x 10'2"	140 sq. ft	Yes

1 Floor 1 - Bath



Dimensions: 7'11" x 4'10"
Area: 38 sq. ft
Counted as living area: Yes

Heated: Yes
Finished: Yes
Enclosed: Yes
Contiguous: Yes
Permitted: Yes
Wet space: Yes
Addition: No
Conversion: No

2 Floor 1 - Garage

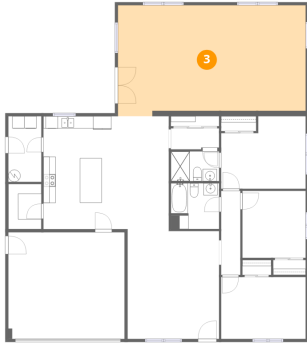


Dimensions: 19'0" x 17'5"
Area: 332 sq. ft
Counted as living area: No

Heated: No
Finished: No
Enclosed: Yes
Contiguous: Yes
Permitted: Yes
Wet space: No
Addition: No
Conversion: No

13002 North 28th Place, Shadow Mountain, Phoenix, Maricopa County, Arizona, United States, 85032

3 Floor 1 - Family Room



Dimensions: 30'9" x 18'1"
Area: 536 sq. ft
Counted as living area: Yes

Heated: Yes
Finished: Yes
Enclosed: Yes
Contiguous: Yes
Permitted: Yes
Wet space: No
Addition: No
Conversion: No

4 Floor 1 - Utility



Dimensions: 5'5" x 10'9"
Area: 58 sq. ft
Counted as living area: Yes

Heated: Yes
Finished: Yes
Enclosed: Yes
Contiguous: Yes
Permitted: Yes
Wet space: No
Addition: No
Conversion: No

5 Floor 1 - Bath



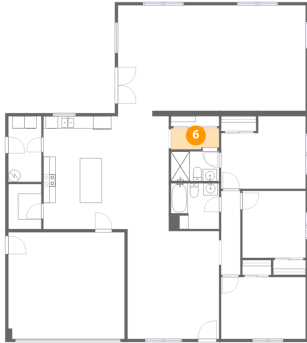
Dimensions: 7'11" x 7'6"
Area: 58 sq. ft
Counted as living area: Yes

Heated: Yes
Finished: Yes
Enclosed: Yes
Contiguous: Yes
Permitted: Yes
Wet space: Yes
Addition: No
Conversion: No

Home data report

13002 North 28th Place, Shadow Mountain, Phoenix, Maricopa County, Arizona, United States, 85032

6 Floor 1 - Hall



Dimensions: 7'11" x 3'5"
Area: 26 sq. ft
Counted as living area: Yes

Heated: Yes
Finished: Yes
Enclosed: Yes
Contiguous: Yes
Permitted: Yes
Wet space: No
Addition: No
Conversion: No

7 Floor 1 - Pantry



Dimensions: 5'5" x 7'5"
Area: 40 sq. ft
Counted as living area: Yes

Heated: Yes
Finished: Yes
Enclosed: Yes
Contiguous: Yes
Permitted: Yes
Wet space: No
Addition: No
Conversion: No

8 Floor 1 - Primary Bedroom



Dimensions: 13'10" x 11'10"
Area: 148 sq. ft
Counted as living area: Yes

Heated: Yes
Finished: Yes
Enclosed: Yes
Contiguous: Yes
Permitted: Yes
Wet space: No
Addition: No
Conversion: No

Home data report

13002 North 28th Place, Shadow Mountain, Phoenix, Maricopa County, Arizona, United States, 85032

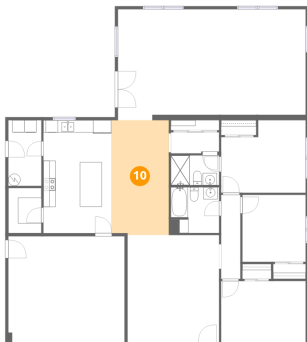
9 Floor 1 - Kitchen



Dimensions: 11'1" x 18'6"
Area: 205 sq. ft
Counted as living area: Yes

Heated: Yes
Finished: Yes
Enclosed: Yes
Contiguous: Yes
Permitted: Yes
Wet space: No
Addition: No
Conversion: No

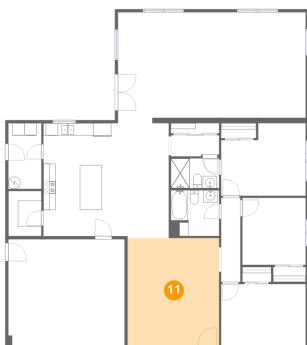
10 Floor 1 - Dining Area



Dimensions: 9'5" x 18'9"
Area: 176 sq. ft
Counted as living area: Yes

Heated: Yes
Finished: Yes
Enclosed: Yes
Contiguous: Yes
Permitted: Yes
Wet space: No
Addition: No
Conversion: No

11 Floor 1 - Living Room



Dimensions: 15'0" x 17'8"
Area: 264 sq. ft
Counted as living area: Yes

Heated: Yes
Finished: Yes
Enclosed: Yes
Contiguous: Yes
Permitted: Yes
Wet space: No
Addition: No
Conversion: No

Home data report

13002 North 28th Place, Shadow Mountain, Phoenix, Maricopa County, Arizona, United States, 85032

12 Floor 1 - Bedroom



Dimensions: 10'4" x 11'0"
Area: 114 sq. ft
Counted as living area: Yes

Heated: Yes
Finished: Yes
Enclosed: Yes
Contiguous: Yes
Permitted: Yes
Wet space: No
Addition: No
Conversion: No

13 Floor 1 - Hall



Dimensions: 3'2" x 13'9"
Area: 43 sq. ft
Counted as living area: Yes

Heated: Yes
Finished: Yes
Enclosed: Yes
Contiguous: Yes
Permitted: Yes
Wet space: No
Addition: No
Conversion: No

14 Floor 1 - Bedroom



Dimensions: 13'10" x 10'2"
Area: 140 sq. ft
Counted as living area: Yes

Heated: Yes
Finished: Yes
Enclosed: Yes
Contiguous: Yes
Permitted: Yes
Wet space: No
Addition: No
Conversion: No