

14 Skyview Point Link Ne Calgary, Ab

**Total GLA: 1350 sq. ft | Total: 2545 sq. ft**

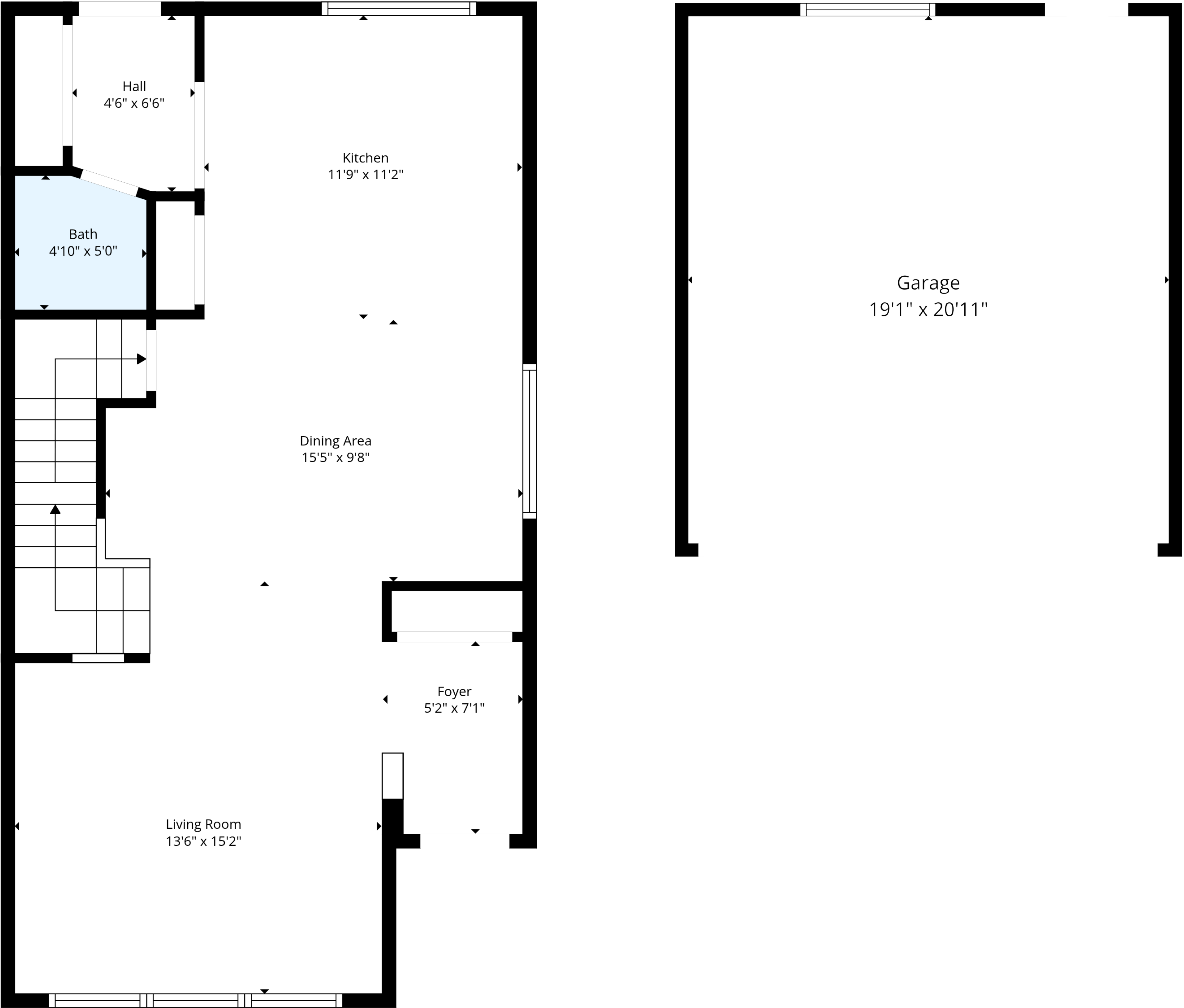
Floor 1 - Below Grade: 633 sq. ft (Excluded areas 59 sq. ft)

1st Floor: 692 sq. ft (Excluded areas: Garage 439 sq. ft)

2nd Floor: 658 sq. ft (Excluded areas 64 sq. ft)

Information Is Calculated By Air Unlimited Corp. ; Deemed Highly Reliable But Not Guaranteed.



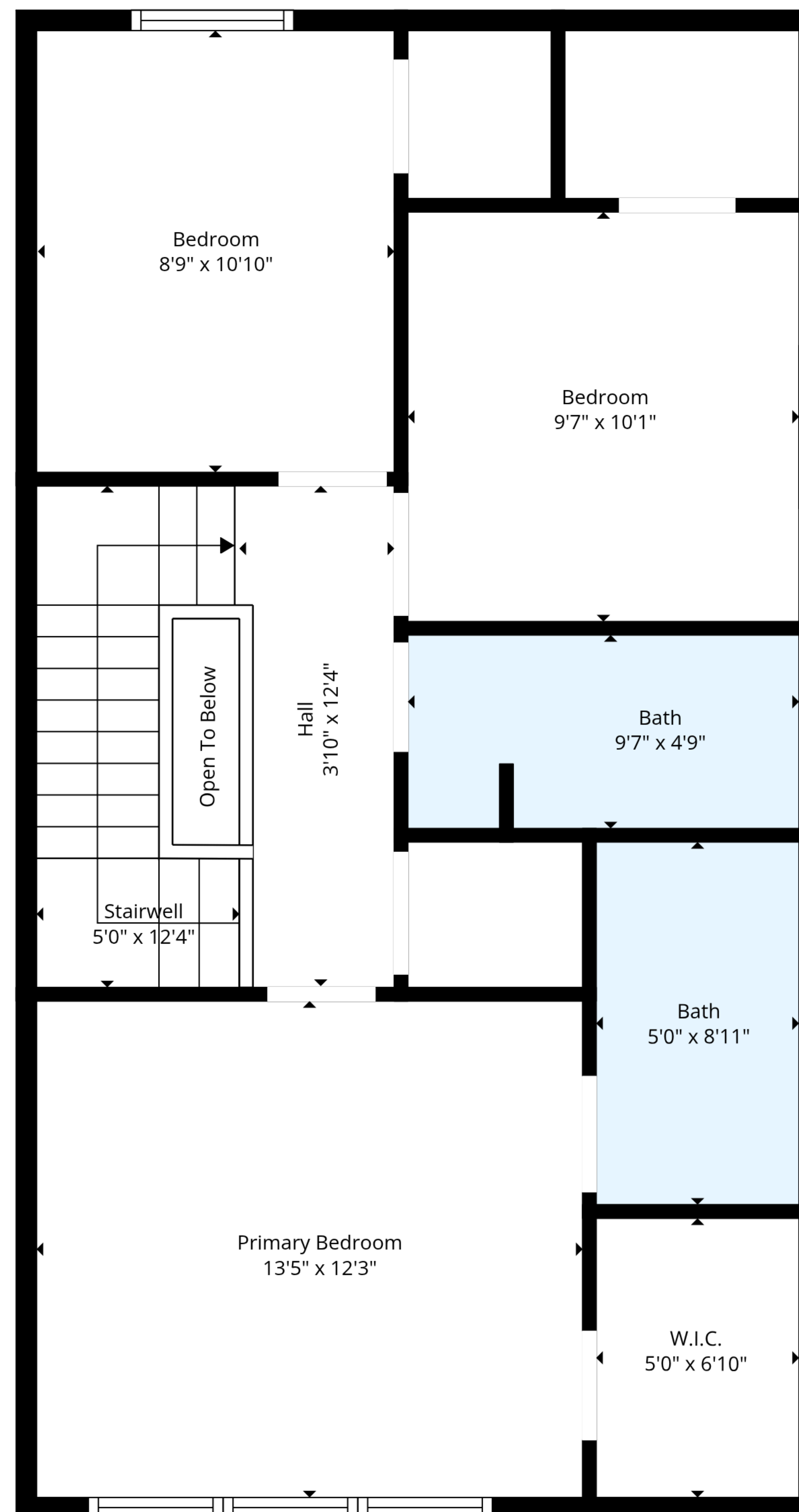


14 Skyview Point Link Ne Calgary, Ab

**Total GLA: 1350 sq. ft | Total: 2545 sq. ft**  
Floor 1 - Below Grade: 633 sq. ft (Excluded areas 59 sq. ft)  
1st Floor: 692 sq. ft (Excluded areas: Garage 439 sq. ft)  
2nd Floor: 658 sq. ft (Excluded areas 64 sq. ft)

Information Is Calculated By Air Unlimited Corp. ; Deemed Highly Reliable But Not Guaranteed.





14 Skyview Point Link Ne Calgary, Ab

**Total GLA: 1350 sq. ft | Total: 2545 sq. ft**

Floor 1 - Below Grade: 633 sq. ft (Excluded areas 59 sq. ft)

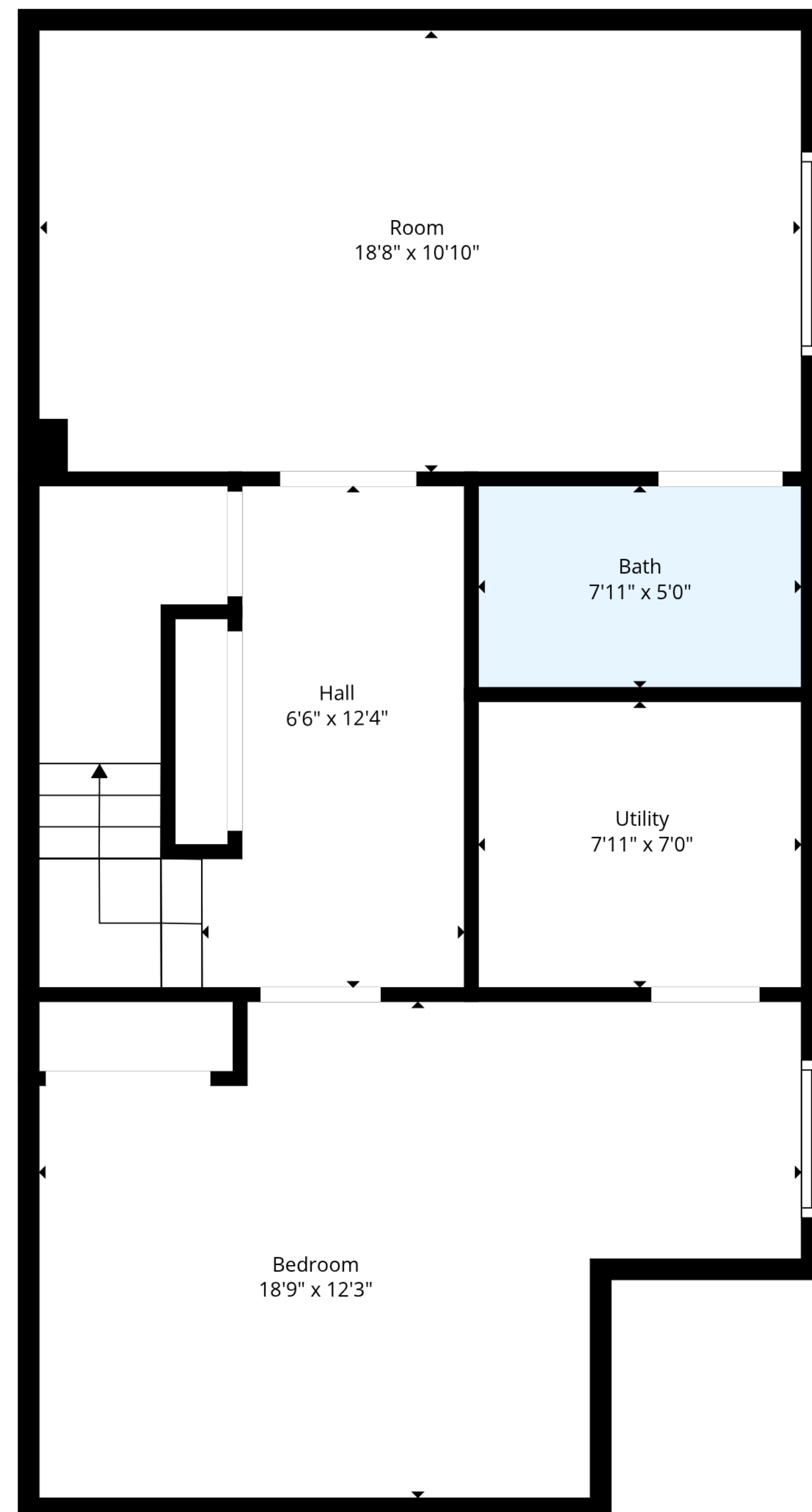
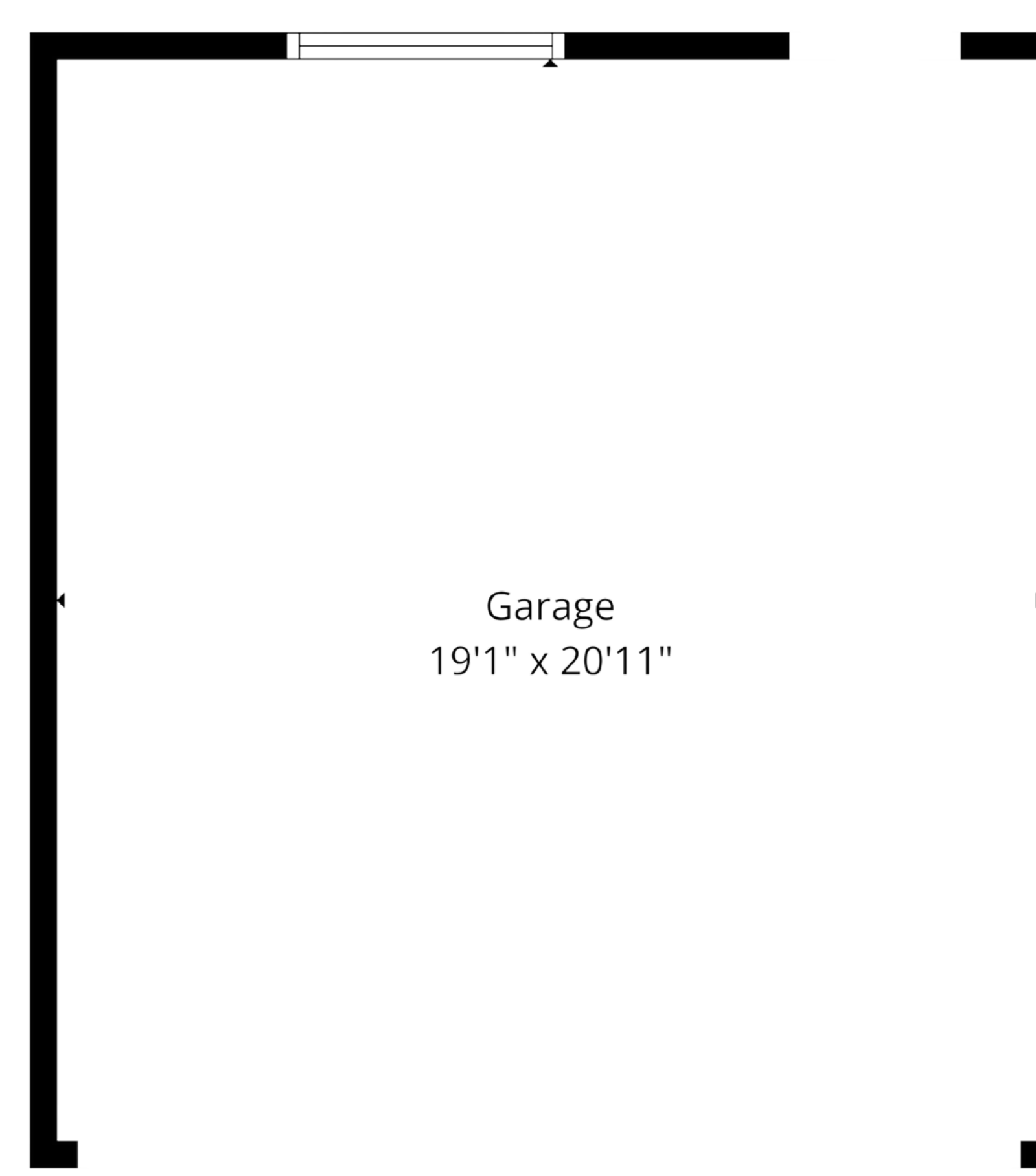
1st Floor: 692 sq. ft (Excluded areas: Garage 439 sq. ft)

2nd Floor: 658 sq. ft (Excluded areas 64 sq. ft)

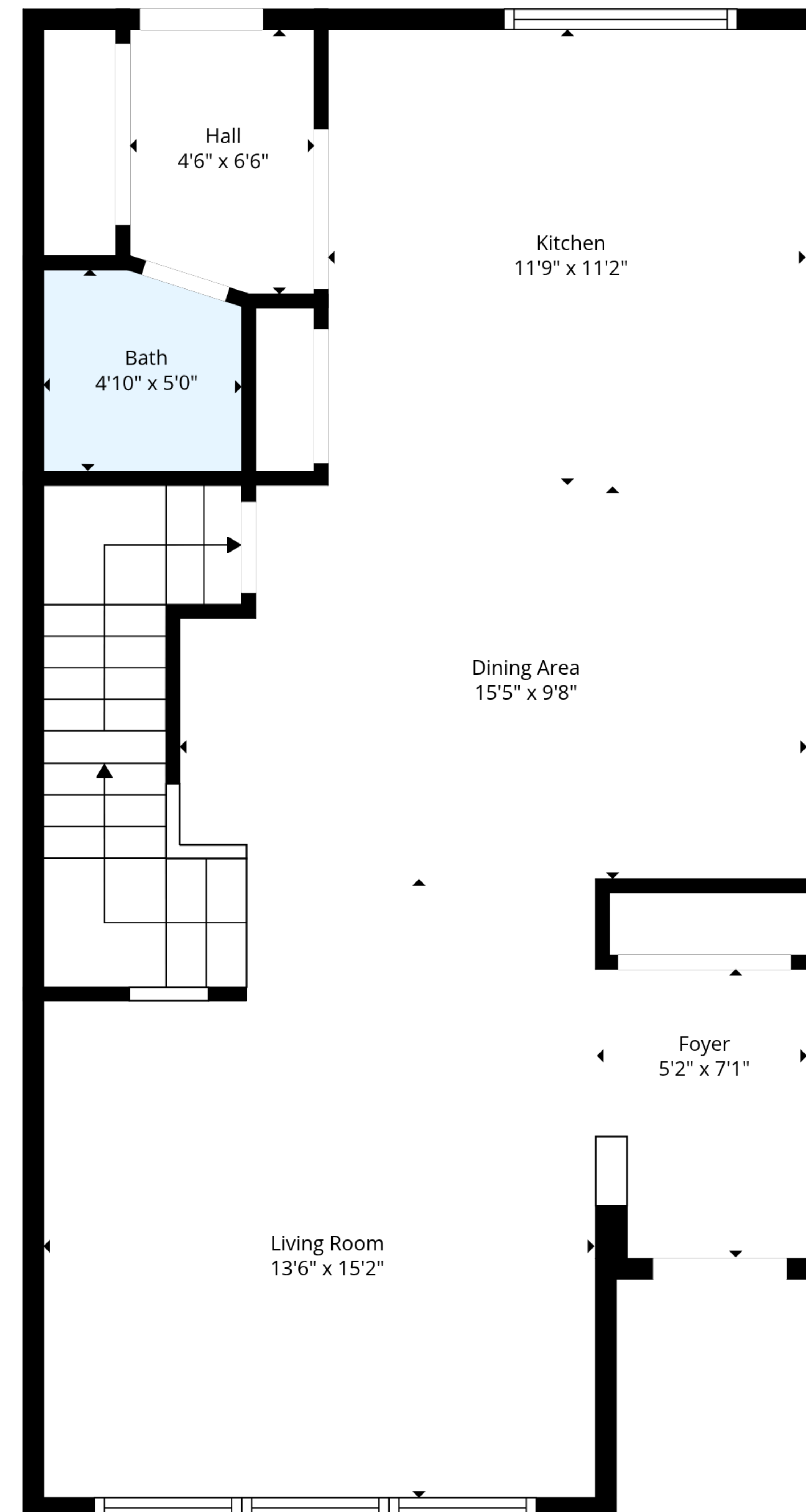
Information Is Calculated By Air Unlimited Corp. ; Deemed Highly Reliable But Not Guaranteed.



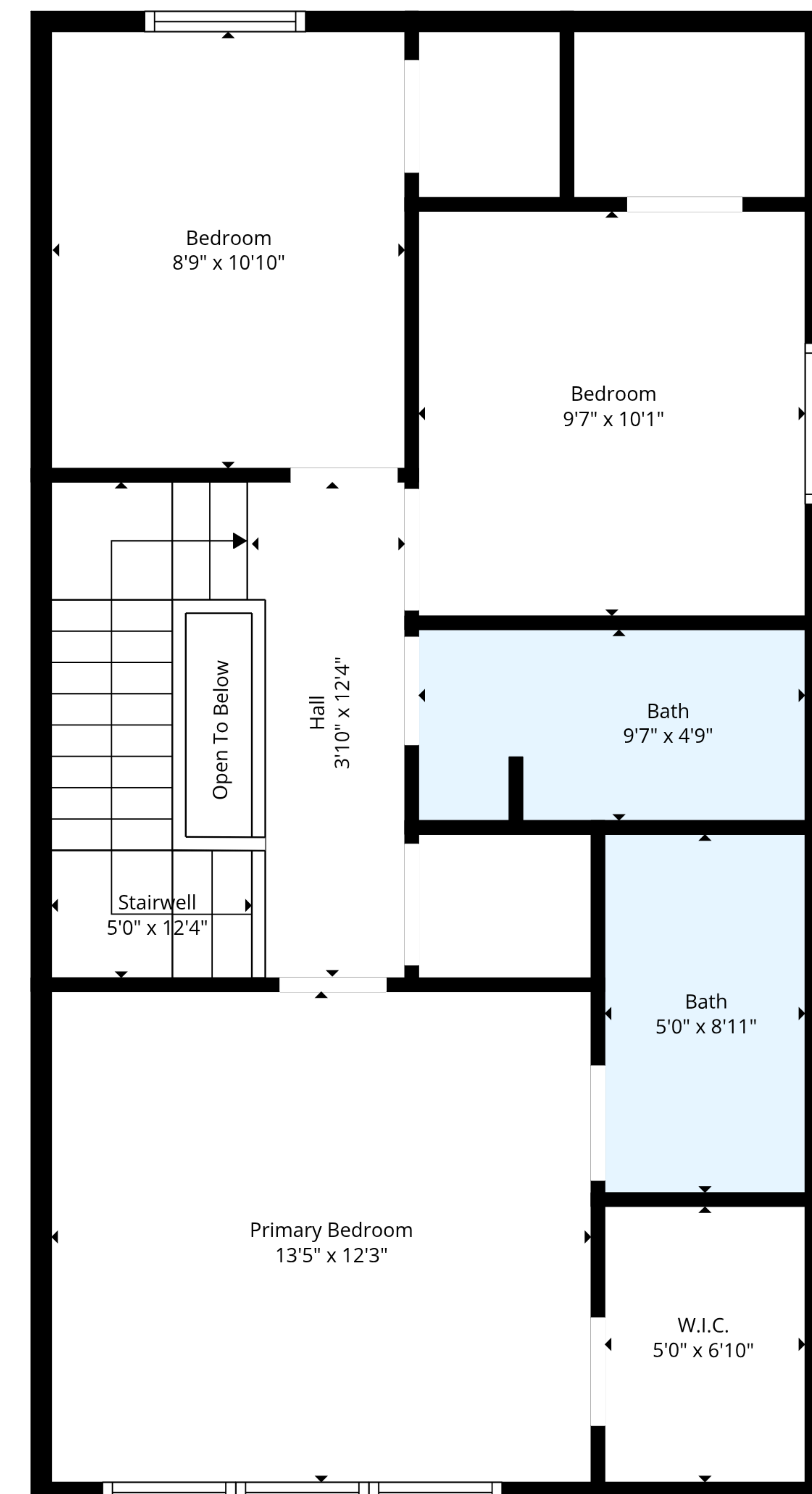




Basement 1 14 Skyview Point Link Ne Calgary, Ab



1st Floor 14 Skyview Point Link Ne Calgary, Ab



2nd Floor 14 Skyview Point Link Ne Calgary, Ab

**Total GLA: 1350 sq. ft | Total: 2545 sq. ft**  
Floor 1 - Below Grade: 633 sq. ft (Excluded areas 59 sq. ft)  
1st Floor: 692 sq. ft (Excluded areas: Garage 439 sq. ft)  
2nd Floor: 658 sq. ft (Excluded areas 64 sq. ft)