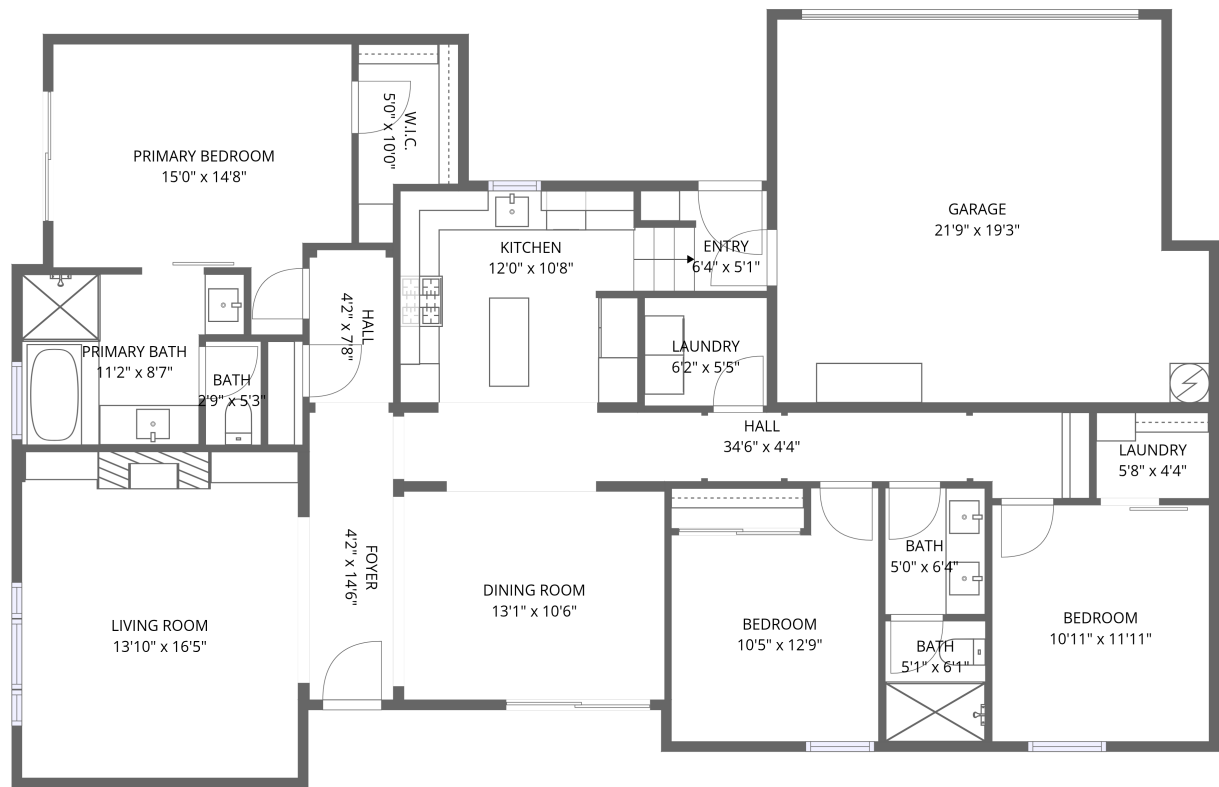


Home data report

18650 North Thompson Peak Parkway, Scottsdale, Maricopa County, Arizona, United States, 85255, 1025



1st floor


Total Area: 1538 sq. ft


1st Floor: 1538 sq. ft

Excluded: Garage 391 sq. ft, Walls: 125 sq. ft

Property summary

 1 Floors

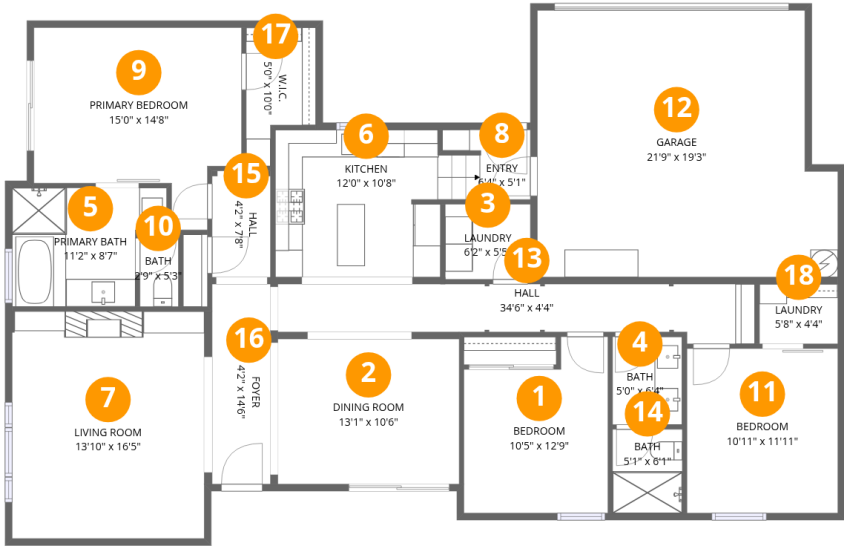
 3 Bedrooms

 2 Bathrooms

 1 Garages

Home data report

18650 North Thompson Peak Parkway, Scottsdale, Maricopa County, Arizona, United States, 85255, 1025



Room dimensions

Floor 1 Total:1538sqft Excluded: 391sqft

#		Dimensions	sqft	Counted as living area
1	Bedroom	10'5" x 12'9"	133 sq. ft	Yes
2	Dining Room	13'1" x 10'6"	138 sq. ft	Yes
3	Laundry	6'2" x 5'5"	34 sq. ft	Yes
4	Bath	5'0" x 6'4"	32 sq. ft	Yes
5	Primary Bath	11'2" x 8'7"	96 sq. ft	Yes
6	Kitchen	12'0" x 10'8"	128 sq. ft	Yes
7	Living Room	13'10" x 16'5"	228 sq. ft	Yes
8	Entry	6'4" x 5'1"	32 sq. ft	Yes
9	Primary Bedroom	15'0" x 14'8"	220 sq. ft	Yes
10	Bath	2'9" x 5'3"	14 sq. ft	Yes
11	Bedroom	10'11" x 11'11"	130 sq. ft	Yes

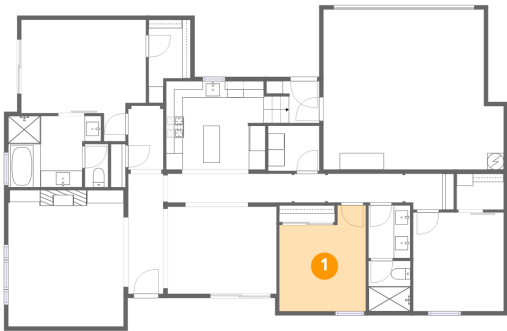
Home data report

18650 North Thompson Peak Parkway, Scottsdale, Maricopa County, Arizona, United States, 85255, 1025

#		Dimensions	sqft	Counted as living area
12	Garage	21'9" x 19'3"	419 sq. ft	No
13	Hall	34'6" x 4'4"	149 sq. ft	Yes
14	Bath	5'1" x 6'1"	31 sq. ft	Yes
15	Hall	4'2" x 7'8"	32 sq. ft	Yes
16	Foyer	4'2" x 14'6"	61 sq. ft	Yes
17	W.I.C.	5'0" x 10'0"	50 sq. ft	Yes
18	Laundry	5'8" x 4'4"	25 sq. ft	Yes

18650 North Thompson Peak Parkway, Scottsdale, Maricopa County, Arizona, United States, 85255, 1025

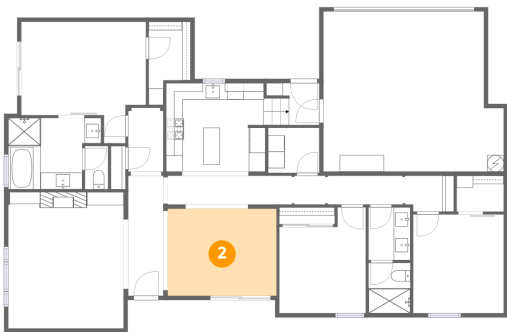
1 Floor 1 - Bedroom



Dimensions: 10'5" x 12'9"
Area: 133 sq. ft
Counted as living area: Yes

Heated: Yes
Finished: Yes
Enclosed: Yes
Contiguous: Yes
Permitted: Yes
Wet space: No
Addition: No
Conversion: No

2 Floor 1 - Dining Room



Dimensions: 13'1" x 10'6"
Area: 138 sq. ft
Counted as living area: Yes

Heated: Yes
Finished: Yes
Enclosed: Yes
Contiguous: Yes
Permitted: Yes
Wet space: No
Addition: No
Conversion: No

18650 North Thompson Peak Parkway, Scottsdale, Maricopa County, Arizona, United States, 85255, 1025

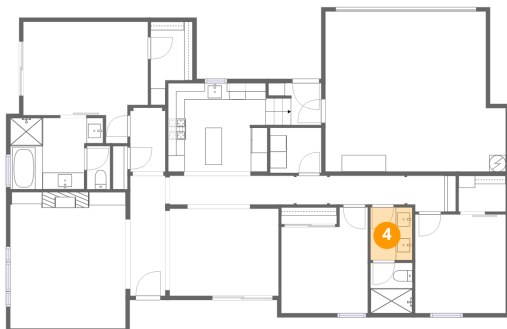
3 Floor 1 - Laundry



Dimensions: 6'2" x 5'5"
Area: 34 sq. ft
Counted as living area: Yes

Heated: Yes
Finished: Yes
Enclosed: Yes
Contiguous: Yes
Permitted: Yes
Wet space: No
Addition: No
Conversion: No

4 Floor 1 - Bath



Dimensions: 5'0" x 6'4"
Area: 32 sq. ft
Counted as living area: Yes

Heated: Yes
Finished: Yes
Enclosed: Yes
Contiguous: Yes
Permitted: Yes
Wet space: Yes
Addition: No
Conversion: No

5 Floor 1 - Primary Bath

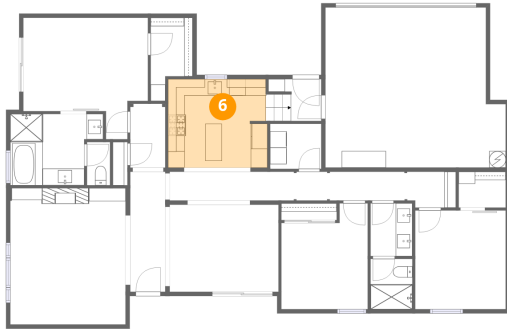


Dimensions: 11'2" x 8'7"
Area: 96 sq. ft
Counted as living area: Yes

Heated: Yes
Finished: Yes
Enclosed: Yes
Contiguous: Yes
Permitted: Yes
Wet space: Yes
Addition: No
Conversion: No

18650 North Thompson Peak Parkway, Scottsdale, Maricopa County, Arizona, United States, 85255, 1025

6 Floor 1 - Kitchen



Dimensions: 12'0" x 10'8"
Area: 128 sq. ft
Counted as living area: Yes

Heated: Yes
Finished: Yes
Enclosed: Yes
Contiguous: Yes
Permitted: Yes
Wet space: No
Addition: No
Conversion: No

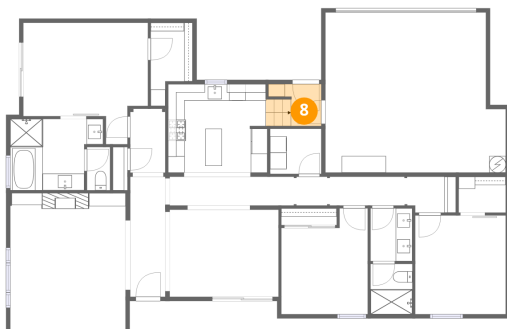
7 Floor 1 - Living Room



Dimensions: 13'10" x 16'5"
Area: 228 sq. ft
Counted as living area: Yes

Heated: Yes
Finished: Yes
Enclosed: Yes
Contiguous: Yes
Permitted: Yes
Wet space: No
Addition: No
Conversion: No

8 Floor 1 - Entry



Dimensions: 6'4" x 5'1"
Area: 32 sq. ft
Counted as living area: Yes

Heated: Yes
Finished: Yes
Enclosed: Yes
Contiguous: Yes
Permitted: Yes
Wet space: No
Addition: No
Conversion: No

18650 North Thompson Peak Parkway, Scottsdale, Maricopa County, Arizona, United States, 85255, 1025

9 Floor 1 - Primary Bedroom



Dimensions: 15'0" x 14'8"
Area: 220 sq. ft
Counted as living area: Yes

Heated: Yes
Finished: Yes
Enclosed: Yes
Contiguous: Yes
Permitted: Yes
Wet space: No
Addition: No
Conversion: No

10 Floor 1 - Bath



Dimensions: 2'9" x 5'3"
Area: 14 sq. ft
Counted as living area: Yes

Heated: Yes
Finished: Yes
Enclosed: Yes
Contiguous: Yes
Permitted: Yes
Wet space: Yes
Addition: No
Conversion: No

11 Floor 1 - Bedroom



Dimensions: 10'11" x 11'11"
Area: 130 sq. ft
Counted as living area: Yes

Heated: Yes
Finished: Yes
Enclosed: Yes
Contiguous: Yes
Permitted: Yes
Wet space: No
Addition: No
Conversion: No

18650 North Thompson Peak Parkway, Scottsdale, Maricopa County, Arizona, United States, 85255, 1025

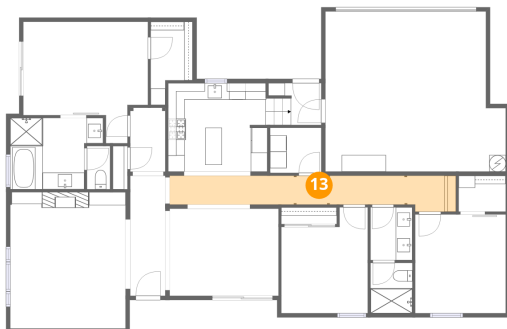
12 Floor 1 - Garage



Dimensions: 21'9" x 19'3"
Area: 419 sq. ft
Counted as living area: No

Heated: No
Finished: No
Enclosed: Yes
Contiguous: Yes
Permitted: Yes
Wet space: No
Addition: No
Conversion: No

13 Floor 1 - Hall



Dimensions: 34'6" x 4'4"
Area: 149 sq. ft
Counted as living area: Yes

Heated: Yes
Finished: Yes
Enclosed: Yes
Contiguous: Yes
Permitted: Yes
Wet space: No
Addition: No
Conversion: No

14 Floor 1 - Bath



Dimensions: 5'1" x 6'1"
Area: 31 sq. ft
Counted as living area: Yes

Heated: Yes
Finished: Yes
Enclosed: Yes
Contiguous: Yes
Permitted: Yes
Wet space: Yes
Addition: No
Conversion: No

18650 North Thompson Peak Parkway, Scottsdale, Maricopa County, Arizona, United States, 85255, 1025

15 Floor 1 - Hall



Dimensions: 4'2" x 7'8"
Area: 32 sq. ft
Counted as living area: Yes

Heated: Yes
Finished: Yes
Enclosed: Yes
Contiguous: Yes
Permitted: Yes
Wet space: No
Addition: No
Conversion: No

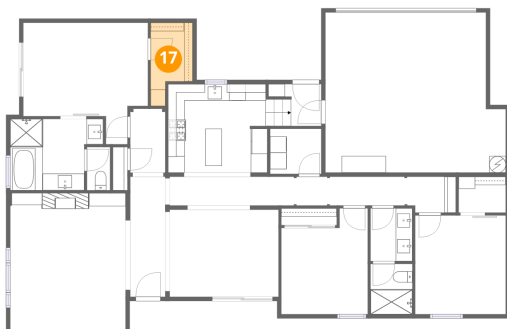
16 Floor 1 - Foyer



Dimensions: 4'2" x 14'6"
Area: 61 sq. ft
Counted as living area: Yes

Heated: Yes
Finished: Yes
Enclosed: Yes
Contiguous: Yes
Permitted: Yes
Wet space: No
Addition: No
Conversion: No

17 Floor 1 - W.I.C.



Dimensions: 5'0" x 10'0"
Area: 50 sq. ft
Counted as living area: Yes

Heated: Yes
Finished: Yes
Enclosed: Yes
Contiguous: Yes
Permitted: Yes
Wet space: No
Addition: No
Conversion: No

18650 North Thompson Peak Parkway, Scottsdale, Maricopa County, Arizona, United States, 85255, 1025

18 Floor 1 - Laundry



Dimensions: 5'8" x 4'4"
Area: 25 sq. ft
Counted as living area: Yes

Heated: Yes
Finished: Yes
Enclosed: Yes
Contiguous: Yes
Permitted: Yes
Wet space: No
Addition: No
Conversion: No