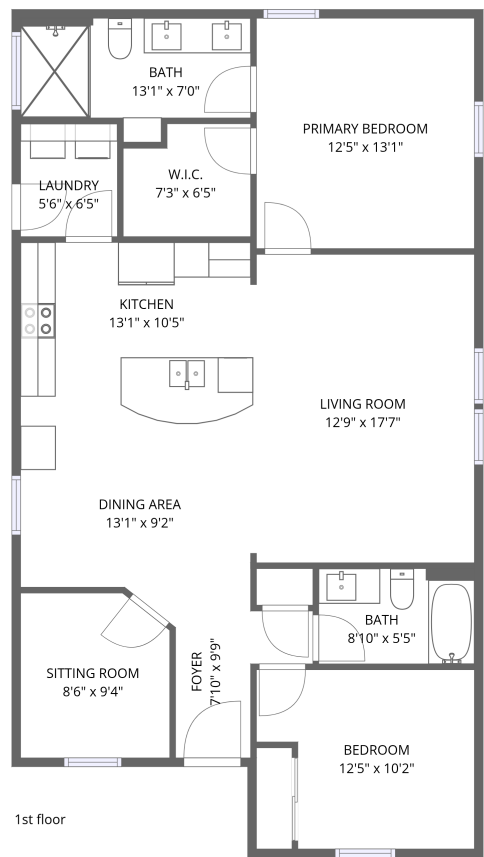


Home data report

15050 West Highway 328, Ocala Florida United States




Total Area: 1150 sq. ft

1st Floor: 1150 sq. ft

Excluded: Walls: 75 sq. ft

Property summary

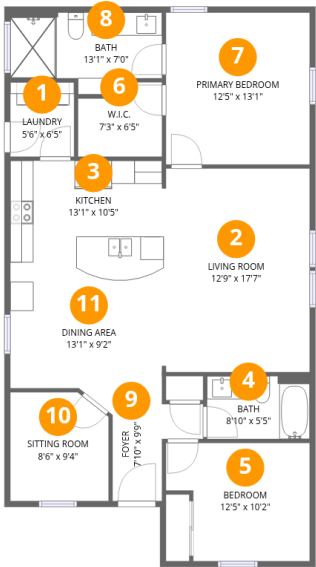
 1 Floors

 2 Bedrooms

 2 Bathrooms

Home data report

15050 West Highway 328, Ocala Florida United States



Room dimensions

Floor 1

Total:1150sqft Excluded: 0sqft

#		Dimensions	sqft	Counted as living area
1	Laundry	5'6" x 6'5"	35 sq. ft	Yes
2	Living Room	12'9" x 17'7"	223 sq. ft	Yes
3	Kitchen	13'1" x 10'5"	137 sq. ft	Yes
4	Bath	8'10" x 5'5"	48 sq. ft	Yes
5	Bedroom	12'5" x 10'2"	126 sq. ft	Yes
6	W.I.C.	7'3" x 6'5"	47 sq. ft	Yes
7	Primary Bedroom	12'5" x 13'1"	162 sq. ft	Yes
8	Bath	13'1" x 7'0"	92 sq. ft	Yes
9	Foyer	7'10" x 9'9"	76 sq. ft	Yes
10	Sitting Room	8'6" x 9'4"	79 sq. ft	Yes
11	Dining Area	13'1" x 9'2"	120 sq. ft	Yes

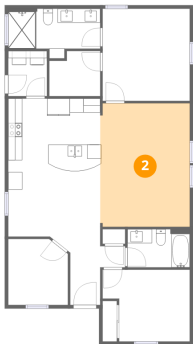
1 Floor 1 - Laundry



Dimensions: 5'6" x 6'5"
Area: 35 sq. ft
Counted as living area: Yes

Heated: Yes
Finished: Yes
Enclosed: Yes
Contiguous: Yes
Permitted: Yes
Wet space: No
Addition: No
Conversion: No

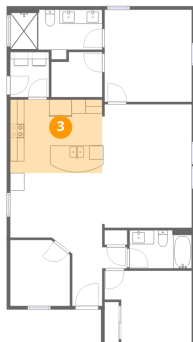
2 Floor 1 - Living Room



Dimensions: 12'9" x 17'7"
Area: 223 sq. ft
Counted as living area: Yes

Heated: Yes
Finished: Yes
Enclosed: Yes
Contiguous: Yes
Permitted: Yes
Wet space: No
Addition: No
Conversion: No

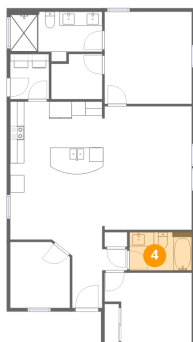
3 Floor 1 - Kitchen



Dimensions: 13'1" x 10'5"
Area: 137 sq. ft
Counted as living area: Yes

Heated: Yes
Finished: Yes
Enclosed: Yes
Contiguous: Yes
Permitted: Yes
Wet space: No
Addition: No
Conversion: No

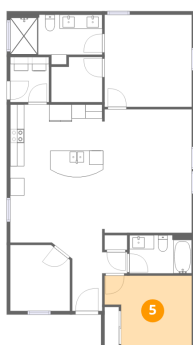
4 Floor 1 - Bath



Dimensions: 8'10" x 5'5"
Area: 48 sq. ft
Counted as living area: Yes

Heated: Yes
Finished: Yes
Enclosed: Yes
Contiguous: Yes
Permitted: Yes
Wet space: Yes
Addition: No
Conversion: No

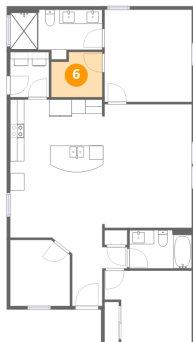
5 Floor 1 - Bedroom



Dimensions: 12'5" x 10'2"
Area: 126 sq. ft
Counted as living area: Yes

Heated: Yes
Finished: Yes
Enclosed: Yes
Contiguous: Yes
Permitted: Yes
Wet space: No
Addition: No
Conversion: No

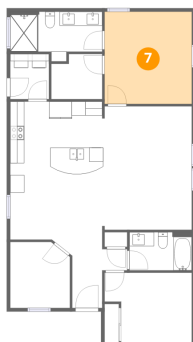
6 Floor 1 - W.I.C.



Dimensions: 7'3" x 6'5"
Area: 47 sq. ft
Counted as living area: Yes

Heated: Yes
Finished: Yes
Enclosed: Yes
Contiguous: Yes
Permitted: Yes
Wet space: No
Addition: No
Conversion: No

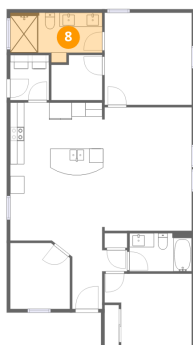
7 Floor 1 - Primary Bedroom



Dimensions: 12'5" x 13'1"
Area: 162 sq. ft
Counted as living area: Yes

Heated: Yes
Finished: Yes
Enclosed: Yes
Contiguous: Yes
Permitted: Yes
Wet space: No
Addition: No
Conversion: No

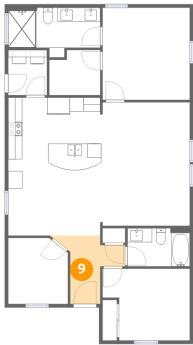
8 Floor 1 - Bath



Dimensions: 13'1" x 7'0"
Area: 92 sq. ft
Counted as living area: Yes

Heated: Yes
Finished: Yes
Enclosed: Yes
Contiguous: Yes
Permitted: Yes
Wet space: Yes
Addition: No
Conversion: No

9 Floor 1 - Foyer



Dimensions: 7'10" x 9'9"
Area: 76 sq. ft
Counted as living area: Yes

Heated: Yes
Finished: Yes
Enclosed: Yes
Contiguous: Yes
Permitted: Yes
Wet space: No
Addition: No
Conversion: No

10 Floor 1 - Sitting Room



Dimensions: 8'6" x 9'4"
Area: 79 sq. ft
Counted as living area: Yes

Heated: Yes
Finished: Yes
Enclosed: Yes
Contiguous: Yes
Permitted: Yes
Wet space: No
Addition: No
Conversion: No

11 Floor 1 - Dining Area



Dimensions: 13'1" x 9'2"
Area: 120 sq. ft
Counted as living area: Yes

Heated: Yes
Finished: Yes
Enclosed: Yes
Contiguous: Yes
Permitted: Yes
Wet space: No
Addition: No
Conversion: No