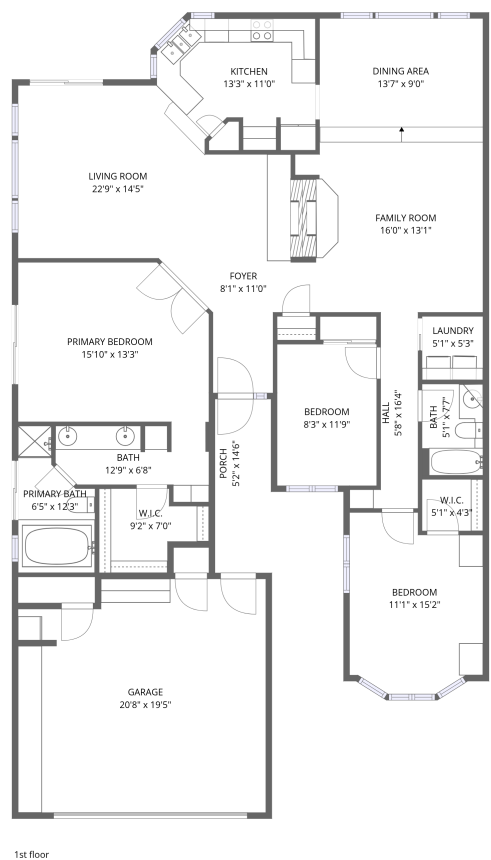


Home data report

10847 North 11th Street, Pointe Tapatio, Phoenix, Maricopa County, Arizona, United States, 85020




**Total Area: 1692 sq. ft**

1st Floor: 1692 sq. ft


Excluded: Undefined 14 sq. ft, Porch 57 sq. ft, Garage 384 sq. ft, Walls: 147 sq. ft

Property summary

 **1** Floors

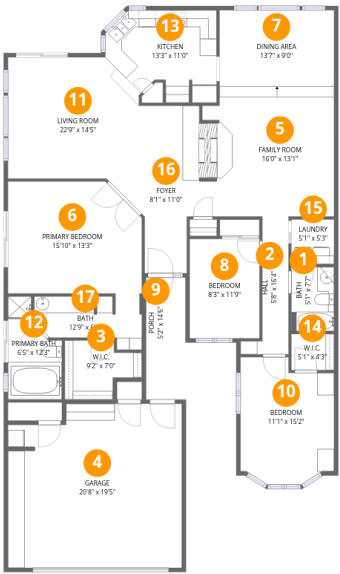
 **3** Bedrooms

 **2** Bathrooms

 **1** Garages

Home data report

10847 North 11th Street, Pointe Tapatio, Phoenix, Maricopa County, Arizona, United States, 85020



Room dimensions

Floor 1 Total:1692sqft Excluded: 455sqft

| #  |                 | Dimensions     | sqft       | Counted as living area |
|----|-----------------|----------------|------------|------------------------|
| 1  | Bath            | 5'1" x 7'7"    | 39 sq. ft  | Yes                    |
| 2  | Hall            | 5'8" x 16'4"   | 93 sq. ft  | Yes                    |
| 3  | W.I.C.          | 9'2" x 7'0"    | 64 sq. ft  | Yes                    |
| 4  | Garage          | 20'8" x 19'5"  | 401 sq. ft | No                     |
| 5  | Family Room     | 16'0" x 13'1"  | 210 sq. ft | Yes                    |
| 6  | Primary Bedroom | 15'10" x 13'3" | 210 sq. ft | Yes                    |
| 7  | Dining Area     | 13'7" x 9'0"   | 123 sq. ft | Yes                    |
| 8  | Bedroom         | 8'3" x 11'9"   | 98 sq. ft  | Yes                    |
| 9  | Porch           | 5'2" x 14'6"   | 75 sq. ft  | No                     |
| 10 | Bedroom         | 11'1" x 15'2"  | 168 sq. ft | Yes                    |
| 11 | Living Room     | 22'9" x 14'5"  | 327 sq. ft | Yes                    |

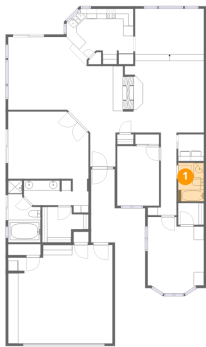
## Home data report

**10847 North 11th Street, Pointe Tapatio, Phoenix, Maricopa County, Arizona, United States, 85020**

| #  |              | Dimensions    | sqft       | Counted as living area |
|----|--------------|---------------|------------|------------------------|
| 12 | Primary Bath | 6'5" x 12'3"  | 78 sq. ft  | Yes                    |
| 13 | Kitchen      | 13'3" x 11'0" | 145 sq. ft | Yes                    |
| 14 | W.I.C.       | 5'1" x 4'3"   | 22 sq. ft  | Yes                    |
| 15 | Laundry      | 5'1" x 5'3"   | 27 sq. ft  | Yes                    |
| 16 | Foyer        | 8'1" x 11'0"  | 89 sq. ft  | Yes                    |
| 17 | Bath         | 12'9" x 6'8"  | 85 sq. ft  | Yes                    |

10847 North 11th Street, Pointe Tapatio, Phoenix, Maricopa County, Arizona, United States, 85020

1 Floor 1 - Bath



Dimensions: 5'1" x 7'7"  
Area: 39 sq. ft  
Counted as living area: Yes

Heated: Yes  
Finished: Yes  
Enclosed: Yes  
Contiguous: Yes  
Permitted: Yes  
Wet space: Yes  
Addition: No  
Conversion: No

2 Floor 1 - Hall



Dimensions: 5'8" x 16'4"  
Area: 93 sq. ft  
Counted as living area: Yes

Heated: Yes  
Finished: Yes  
Enclosed: Yes  
Contiguous: Yes  
Permitted: Yes  
Wet space: No  
Addition: No  
Conversion: No

10847 North 11th Street, Pointe Tapatio, Phoenix, Maricopa County, Arizona, United States, 85020

3 Floor 1 - W.I.C.



Dimensions: 9'2" x 7'0"  
Area: 64 sq. ft  
Counted as living area: Yes

Heated: Yes  
Finished: Yes  
Enclosed: Yes  
Contiguous: Yes  
Permitted: Yes  
Wet space: No  
Addition: No  
Conversion: No

4 Floor 1 - Garage



Dimensions: 20'8" x 19'5"  
Area: 401 sq. ft  
Counted as living area: No

Heated: No  
Finished: No  
Enclosed: Yes  
Contiguous: Yes  
Permitted: Yes  
Wet space: No  
Addition: No  
Conversion: No

5 Floor 1 - Family Room



Dimensions: 16'0" x 13'1"  
Area: 210 sq. ft  
Counted as living area: Yes

Heated: Yes  
Finished: Yes  
Enclosed: Yes  
Contiguous: Yes  
Permitted: Yes  
Wet space: No  
Addition: No  
Conversion: No

6 Floor 1 - Primary Bedroom



Dimensions: 15'10" x 13'3"  
Area: 210 sq. ft  
Counted as living area: Yes

Heated: Yes  
Finished: Yes  
Enclosed: Yes  
Contiguous: Yes  
Permitted: Yes  
Wet space: No  
Addition: No  
Conversion: No

7 Floor 1 - Dining Area



Dimensions: 13'7" x 9'0"  
Area: 123 sq. ft  
Counted as living area: Yes

Heated: Yes  
Finished: Yes  
Enclosed: Yes  
Contiguous: Yes  
Permitted: Yes  
Wet space: No  
Addition: No  
Conversion: No

8 Floor 1 - Bedroom



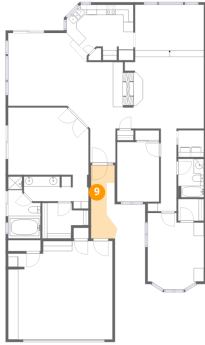
Dimensions: 8'3" x 11'9"  
Area: 98 sq. ft  
Counted as living area: Yes

Heated: Yes  
Finished: Yes  
Enclosed: Yes  
Contiguous: Yes  
Permitted: Yes  
Wet space: No  
Addition: No  
Conversion: No

## Home data report

10847 North 11th Street, Pointe Tapatio, Phoenix, Maricopa County, Arizona, United States, 85020

### 9 Floor 1 - Porch



Dimensions: 5'2" x 14'6"  
Area: 75 sq. ft  
Counted as living area: No

Heated: No  
Finished: No  
Enclosed: No  
Contiguous: Yes  
Permitted: Yes  
Wet space: No  
Addition: No  
Conversion: No

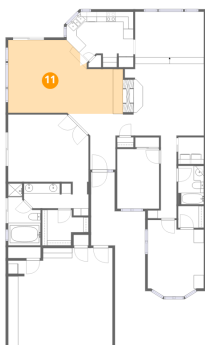
### 10 Floor 1 - Bedroom



Dimensions: 11'1" x 15'2"  
Area: 168 sq. ft  
Counted as living area: Yes

Heated: Yes  
Finished: Yes  
Enclosed: Yes  
Contiguous: Yes  
Permitted: Yes  
Wet space: No  
Addition: No  
Conversion: No

### 11 Floor 1 - Living Room

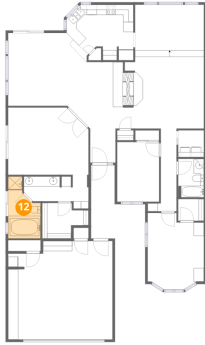


Dimensions: 22'9" x 14'5"  
Area: 327 sq. ft  
Counted as living area: Yes

Heated: Yes  
Finished: Yes  
Enclosed: Yes  
Contiguous: Yes  
Permitted: Yes  
Wet space: No  
Addition: No  
Conversion: No

10847 North 11th Street, Pointe Tapatio, Phoenix, Maricopa County, Arizona, United States, 85020

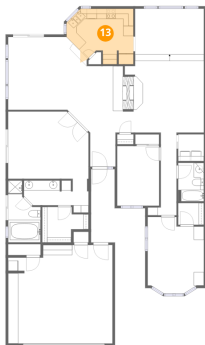
## 12 Floor 1 - Primary Bath



Dimensions: 6'5" x 12'3"  
Area: 78 sq. ft  
Counted as living area: Yes

Heated: Yes  
Finished: Yes  
Enclosed: Yes  
Contiguous: Yes  
Permitted: Yes  
Wet space: Yes  
Addition: No  
Conversion: No

## 13 Floor 1 - Kitchen



Dimensions: 13'3" x 11'0"  
Area: 145 sq. ft  
Counted as living area: Yes

Heated: Yes  
Finished: Yes  
Enclosed: Yes  
Contiguous: Yes  
Permitted: Yes  
Wet space: No  
Addition: No  
Conversion: No

## 14 Floor 1 - W.I.C.



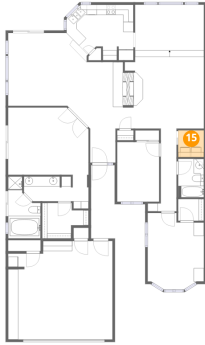
Dimensions: 5'1" x 4'3"  
Area: 22 sq. ft  
Counted as living area: Yes

Heated: Yes  
Finished: Yes  
Enclosed: Yes  
Contiguous: Yes  
Permitted: Yes  
Wet space: No  
Addition: No  
Conversion: No



10847 North 11th Street, Pointe Tapatio, Phoenix, Maricopa County, Arizona, United States, 85020

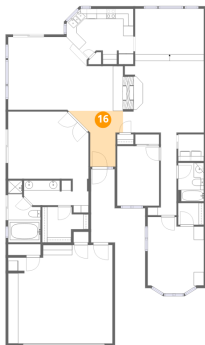
## 15 Floor 1 - Laundry



Dimensions: 5'1" x 5'3"  
Area: 27 sq. ft  
Counted as living area: Yes

Heated: Yes  
Finished: Yes  
Enclosed: Yes  
Contiguous: Yes  
Permitted: Yes  
Wet space: No  
Addition: No  
Conversion: No

## 16 Floor 1 - Foyer



Dimensions: 8'1" x 11'0"  
Area: 89 sq. ft  
Counted as living area: Yes

Heated: Yes  
Finished: Yes  
Enclosed: Yes  
Contiguous: Yes  
Permitted: Yes  
Wet space: No  
Addition: No  
Conversion: No

## 17 Floor 1 - Bath



Dimensions: 12'9" x 6'8"  
Area: 85 sq. ft  
Counted as living area: Yes

Heated: Yes  
Finished: Yes  
Enclosed: Yes  
Contiguous: Yes  
Permitted: Yes  
Wet space: Yes  
Addition: No  
Conversion: No