

Home data report

219 Syracuse Street, Tonawanda, Erie County, New York, United States, 14150



Total Area: 1902 sq. ft

Basement 1: 0 sq. ft, 1st Floor: 1299 sq. ft, 2nd Floor: 603 sq. ft
Excluded: Utility 437 sq. ft, Basement 336 sq. ft, Garage 266 sq. ft, Covered patio 152 sq. ft, Fireplace 6 sq. ft, Low ceiling 33 sq. ft, Walls: 220 sq. ft

Property summary

 **3** Floors

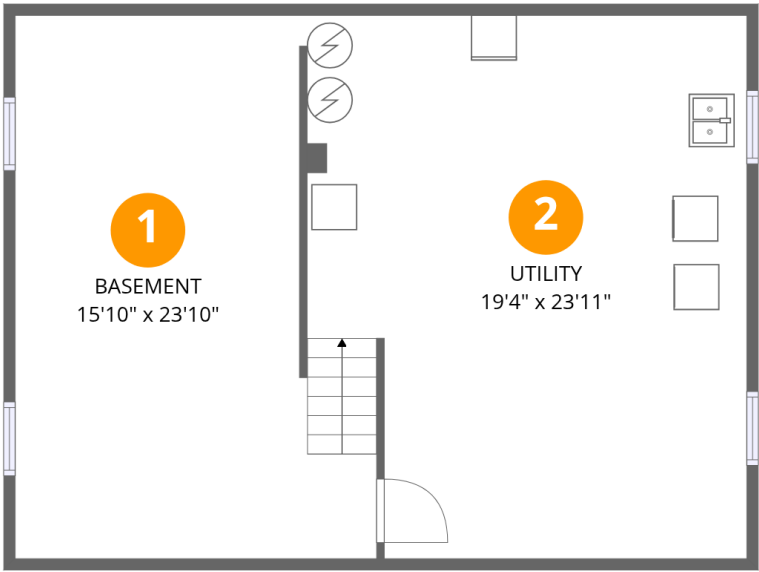
 **5** Bedrooms

 **2** Bathrooms

 **1** Garages

Home data report

219 Syracuse Street, Tonawanda, Erie County, New York, United States, 14150



Room dimensions

Floor 1 Below grade Total:0sqft Excluded: 773sqft

#		Dimensions	sqft	Counted as living area
1	Basement	15'10" x 23'10"	378 sq. ft	No
2	Utility	19'4" x 23'11"	462 sq. ft	No

Home data report

219 Syracuse Street, Tonawanda, Erie County, New York, United States, 14150



Room dimensions

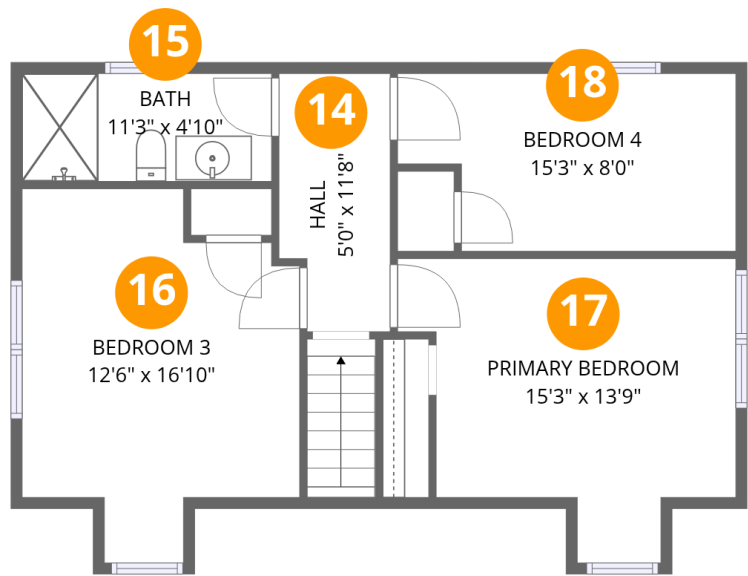
Floor 2

Total:1299sqft Excluded: 424sqft

#		Dimensions	sqft	Counted as living area
3	Bedroom 2	12'6" x 10'6"	131 sq. ft	Yes
4	Covered Patio	7'4" x 20'7"	151 sq. ft	No
5	Living Room	18'9" x 15'9"	296 sq. ft	Yes
6	Library	13'1" x 15'9"	205 sq. ft	Yes
7	Garage	13'7" x 19'7"	266 sq. ft	No
8	Dining Area	19'4" x 12'1"	234 sq. ft	Yes
9	Entry	6'10" x 5'6"	38 sq. ft	Yes
10	Bath	6'2" x 8'8"	53 sq. ft	Yes
11	Hall	10'1" x 4'5"	45 sq. ft	Yes
12	Bedroom 1	12'4" x 8'8"	106 sq. ft	Yes
13	Kitchen	13'1" x 12'1"	158 sq. ft	Yes

Home data report

219 Syracuse Street, Tonawanda, Erie County, New York, United States, 14150

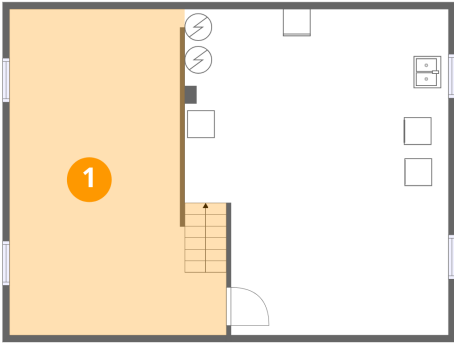


Room dimensions

Floor 3 Total:603sqft Excluded: 33sqft

#		Dimensions	sqft	Counted as living area
14	Hall	5'0" x 11'8"	58 sq. ft	Yes
15	Bath	11'3" x 4'10"	55 sq. ft	Yes
16	Bedroom 3	12'6" x 16'10"	210 sq. ft	Yes
17	Primary Bedroom	15'3" x 13'9"	209 sq. ft	Yes
18	Bedroom 4	15'3" x 8'0"	122 sq. ft	Yes

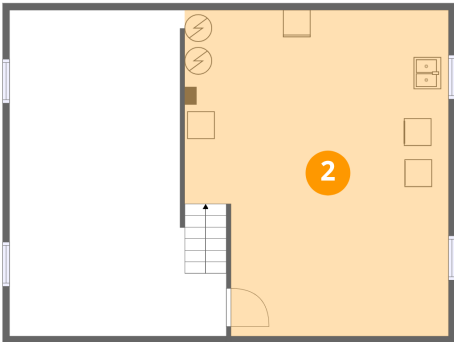
1 Floor 1 - Basement



Dimensions: 15'10" x 23'10"
Area: 378 sq. ft
Counted as living area: No

Heated: Yes
Finished: No
Enclosed: Yes
Contiguous: Yes
Permitted: Yes
Wet space: No
Addition: No
Conversion: No

2 Floor 1 - Utility



Dimensions: 19'4" x 23'11"
Area: 462 sq. ft
Counted as living area: No

Heated: Yes
Finished: No
Enclosed: Yes
Contiguous: Yes
Permitted: Yes
Wet space: No
Addition: No
Conversion: No

3 Floor 2 - Bedroom 2



Dimensions: 12'6" x 10'6"
Area: 131 sq. ft
Counted as living area: Yes

Heated: Yes
Finished: Yes
Enclosed: Yes
Contiguous: Yes
Permitted: Yes
Wet space: No
Addition: No
Conversion: No

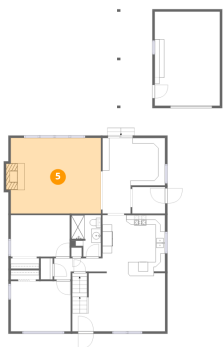
4 Floor 2 - Covered Patio



Dimensions: 7'4" x 20'7"
Area: 151 sq. ft
Counted as living area: No

Heated: No
Finished: No
Enclosed: No
Contiguous: Yes
Permitted: Yes
Wet space: No
Addition: No
Conversion: No

5 Floor 2 - Living Room



Dimensions: 18'9" x 15'9"
Area: 296 sq. ft
Counted as living area: Yes

Heated: Yes
Finished: Yes
Enclosed: Yes
Contiguous: Yes
Permitted: Yes
Wet space: No
Addition: No
Conversion: No

6 Floor 2 - Library



Dimensions: 13'1" x 15'9"
Area: 205 sq. ft
Counted as living area: Yes

Heated: Yes
Finished: Yes
Enclosed: Yes
Contiguous: Yes
Permitted: Yes
Wet space: No
Addition: No
Conversion: No

7 Floor 2 - Garage



Dimensions: 13'7" x 19'7"
Area: 266 sq. ft
Counted as living area: No

Heated: No
Finished: No
Enclosed: Yes
Contiguous: Yes
Permitted: Yes
Wet space: No
Addition: No
Conversion: No

8 Floor 2 - Dining Area



Dimensions: 19'4" x 12'1"
Area: 234 sq. ft
Counted as living area: Yes

Heated: Yes
Finished: Yes
Enclosed: Yes
Contiguous: Yes
Permitted: Yes
Wet space: No
Addition: No
Conversion: No

9 Floor 2 - Entry



Dimensions: 6'10" x 5'6"
Area: 38 sq. ft
Counted as living area: Yes

Heated: Yes
Finished: Yes
Enclosed: Yes
Contiguous: Yes
Permitted: Yes
Wet space: No
Addition: No
Conversion: No

10 Floor 2 - Bath



Dimensions: 6'2" x 8'8"
Area: 53 sq. ft
Counted as living area: Yes

Heated: Yes
Finished: Yes
Enclosed: Yes
Contiguous: Yes
Permitted: Yes
Wet space: Yes
Addition: No
Conversion: No

11 Floor 2 - Hall



Dimensions: 10'1" x 4'5"
Area: 45 sq. ft
Counted as living area: Yes

Heated: Yes
Finished: Yes
Enclosed: Yes
Contiguous: Yes
Permitted: Yes
Wet space: No
Addition: No
Conversion: No

219 Syracuse Street, Tonawanda, Erie County, New York, United States, 14150

12 Floor 2 - Bedroom 1



Dimensions: 12'4" x 8'8"
Area: 106 sq. ft
Counted as living area: Yes

Heated: Yes
Finished: Yes
Enclosed: Yes
Contiguous: Yes
Permitted: Yes
Wet space: No
Addition: No
Conversion: No

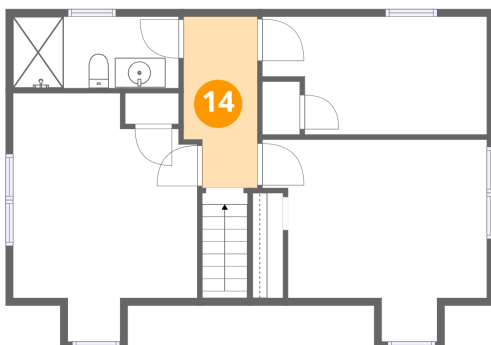
13 Floor 2 - Kitchen



Dimensions: 13'1" x 12'1"
Area: 158 sq. ft
Counted as living area: Yes

Heated: Yes
Finished: Yes
Enclosed: Yes
Contiguous: Yes
Permitted: Yes
Wet space: No
Addition: No
Conversion: No

14 Floor 3 - Hall

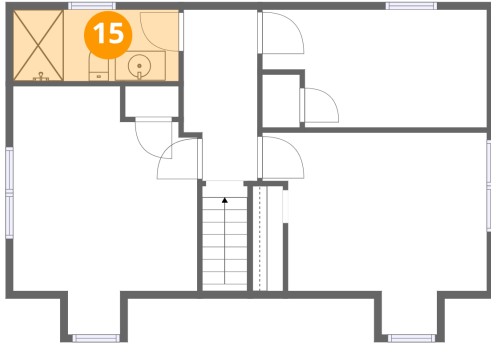


Dimensions: 5'0" x 11'8"
Area: 58 sq. ft
Counted as living area: Yes

Heated: Yes
Finished: Yes
Enclosed: Yes
Contiguous: Yes
Permitted: Yes
Wet space: No
Addition: No
Conversion: No

219 Syracuse Street, Tonawanda, Erie County, New York, United States, 14150

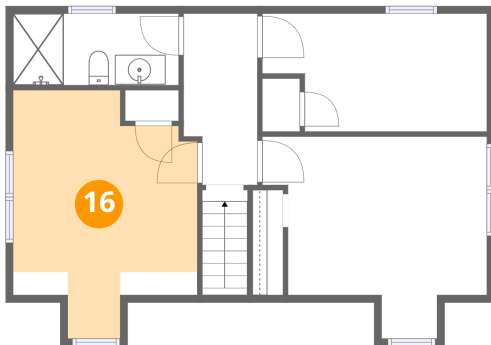
15 Floor 3 - Bath



Dimensions: 11'3" x 4'10"
Area: 55 sq. ft
Counted as living area: Yes

Heated: Yes
Finished: Yes
Enclosed: Yes
Contiguous: Yes
Permitted: Yes
Wet space: Yes
Addition: No
Conversion: No

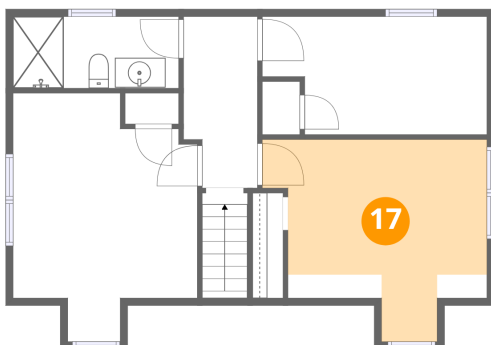
16 Floor 3 - Bedroom 3



Dimensions: 12'6" x 16'10"
Area: 210 sq. ft
Counted as living area: Yes

Heated: Yes
Finished: Yes
Enclosed: Yes
Contiguous: Yes
Permitted: Yes
Wet space: No
Addition: No
Conversion: No

17 Floor 3 - Primary Bedroom



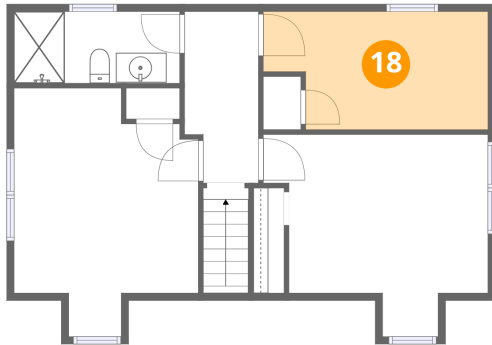
Dimensions: 15'3" x 13'9"
Area: 209 sq. ft
Counted as living area: Yes

Heated: Yes
Finished: Yes
Enclosed: Yes
Contiguous: Yes
Permitted: Yes
Wet space: No
Addition: No
Conversion: No

Home data report

219 Syracuse Street, Tonawanda, Erie County, New York, United States, 14150

18 Floor 3 - Bedroom 4



Dimensions: 15'3" x 8'0"
Area: 122 sq. ft
Counted as living area: Yes

Heated: Yes
Finished: Yes
Enclosed: Yes
Contiguous: Yes
Permitted: Yes
Wet space: No
Addition: No
Conversion: No