

Home data report

6020 East Hartford Avenue, Scottsdale, Maricopa County,
Arizona, United States, 85254




Total Area: 3338 sq. ft


1st Floor: 3338 sq. ft

Excluded: Walls: 160 sq. ft

Property summary

 1 Floors

 4 Bedrooms

 2 Bathrooms

Home data report

**6020 East Hartford Avenue, Scottsdale, Maricopa County,
Arizona, United States, 85254**



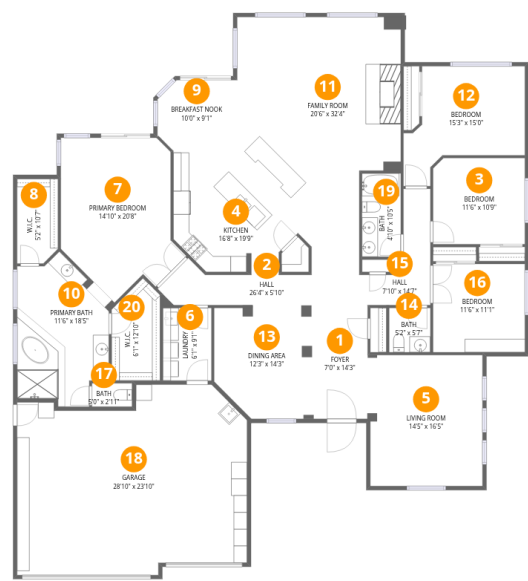
1
Half baths



1
Garages

Home data report

6020 East Hartford Avenue, Scottsdale, Maricopa County,
Arizona, United States, 85254



Room dimensions

Floor 1 Total:3338sqft Excluded: 0sqft

#		Dimensions	sqft	Counted as living area
1	Foyer	7'0" x 14'3"	99 sq. ft	Yes
2	Hall	26'4" x 5'10"	154 sq. ft	Yes
3	Bedroom	11'6" x 10'9"	124 sq. ft	Yes
4	Kitchen	16'8" x 19'9"	329 sq. ft	Yes
5	Living Room	14'5" x 16'5"	236 sq. ft	Yes
6	Laundry	6'1" x 9'1"	56 sq. ft	Yes
7	Primary Bedroom	14'10" x 20'8"	306 sq. ft	Yes
8	W.I.C.	5'2" x 10'7"	54 sq. ft	Yes
9	Breakfast Nook	10'0" x 9'1"	91 sq. ft	Yes
10	Primary Bath	11'6" x 18'5"	212 sq. ft	Yes
11	Family Room	20'6" x 32'4"	663 sq. ft	Yes

Home data report

**6020 East Hartford Avenue, Scottsdale, Maricopa County,
Arizona, United States, 85254**

#		Dimensions	sqft	Counted as living area
12	Bedroom	15'3" x 15'0"	229 sq. ft	Yes
13	Dining Area	12'3" x 14'3"	175 sq. ft	Yes
14	Bath	5'2" x 5'7"	29 sq. ft	Yes
15	Hall	7'10" x 14'7"	115 sq. ft	Yes
16	Bedroom	11'6" x 11'1"	128 sq. ft	Yes
17	Bath	5'0" x 2'11"	15 sq. ft	Yes
18	Garage	28'10" x 23'10"	688 sq. ft	Yes
19	Bath	4'10" x 10'5"	51 sq. ft	Yes
20	W.I.C.	6'1" x 12'10"	78 sq. ft	Yes

6020 East Hartford Avenue, Scottsdale, Maricopa County,
Arizona, United States, 85254

1 Floor 1 - Foyer



Dimensions: 7'0" x 14'3"
Area: 99 sq. ft
Counted as living area: Yes

Heated: Yes
Finished: Yes
Enclosed: Yes
Contiguous: Yes
Permitted: Yes
Wet space: No
Addition: No
Conversion: No

2 Floor 1 - Hall



Dimensions: 26'4" x 5'10"
Area: 154 sq. ft
Counted as living area: Yes

Heated: Yes
Finished: Yes
Enclosed: Yes
Contiguous: Yes
Permitted: Yes
Wet space: No
Addition: No
Conversion: No

6020 East Hartford Avenue, Scottsdale, Maricopa County,
Arizona, United States, 85254

3 Floor 1 - Bedroom



Dimensions: 11'6" x 10'9"
Area: 124 sq. ft
Counted as living area: Yes

Heated: Yes
Finished: Yes
Enclosed: Yes
Contiguous: Yes
Permitted: Yes
Wet space: No
Addition: No
Conversion: No

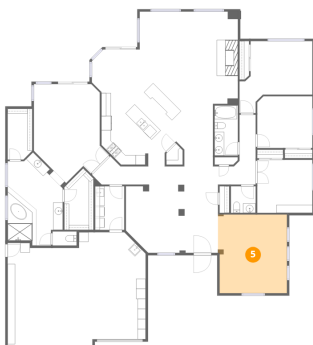
4 Floor 1 - Kitchen



Dimensions: 16'8" x 19'9"
Area: 329 sq. ft
Counted as living area: Yes

Heated: Yes
Finished: Yes
Enclosed: Yes
Contiguous: Yes
Permitted: Yes
Wet space: No
Addition: No
Conversion: No

5 Floor 1 - Living Room



Dimensions: 14'5" x 16'5"
Area: 236 sq. ft
Counted as living area: Yes

Heated: Yes
Finished: Yes
Enclosed: Yes
Contiguous: Yes
Permitted: Yes
Wet space: No
Addition: No
Conversion: No

6020 East Hartford Avenue, Scottsdale, Maricopa County,
Arizona, United States, 85254

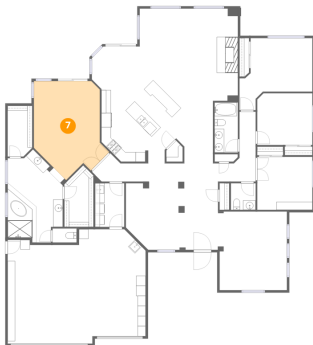
6 Floor 1 - Laundry



Dimensions: 6'1" x 9'1"
Area: 56 sq. ft
Counted as living area: Yes

Heated: Yes
Finished: Yes
Enclosed: Yes
Contiguous: Yes
Permitted: Yes
Wet space: No
Addition: No
Conversion: No

7 Floor 1 - Primary Bedroom



Dimensions: 14'10" x 20'8"
Area: 306 sq. ft
Counted as living area: Yes

Heated: Yes
Finished: Yes
Enclosed: Yes
Contiguous: Yes
Permitted: Yes
Wet space: No
Addition: No
Conversion: No

8 Floor 1 - W.I.C.



Dimensions: 5'2" x 10'7"
Area: 54 sq. ft
Counted as living area: Yes

Heated: Yes
Finished: Yes
Enclosed: Yes
Contiguous: Yes
Permitted: Yes
Wet space: No
Addition: No
Conversion: No

6020 East Hartford Avenue, Scottsdale, Maricopa County,
Arizona, United States, 85254

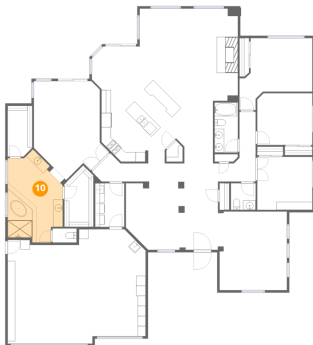
9 Floor 1 - Breakfast Nook



Dimensions: 10'0" x 9'1"
Area: 91 sq. ft
Counted as living area: Yes

Heated: Yes
Finished: Yes
Enclosed: Yes
Contiguous: Yes
Permitted: Yes
Wet space: No
Addition: No
Conversion: No

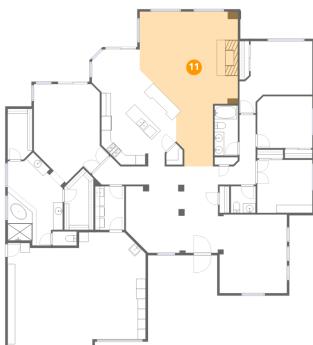
10 Floor 1 - Primary Bath



Dimensions: 11'6" x 18'5"
Area: 212 sq. ft
Counted as living area: Yes

Heated: Yes
Finished: Yes
Enclosed: Yes
Contiguous: Yes
Permitted: Yes
Wet space: Yes
Addition: No
Conversion: No

11 Floor 1 - Family Room



Dimensions: 20'6" x 32'4"
Area: 663 sq. ft
Counted as living area: Yes

Heated: Yes
Finished: Yes
Enclosed: Yes
Contiguous: Yes
Permitted: Yes
Wet space: No
Addition: No
Conversion: No

6020 East Hartford Avenue, Scottsdale, Maricopa County,
Arizona, United States, 85254

12 Floor 1 - Bedroom



Dimensions: 15'3" x 15'0"
Area: 229 sq. ft
Counted as living area: Yes

Heated: Yes
Finished: Yes
Enclosed: Yes
Contiguous: Yes
Permitted: Yes
Wet space: No
Addition: No
Conversion: No

13 Floor 1 - Dining Area



Dimensions: 12'3" x 14'3"
Area: 175 sq. ft
Counted as living area: Yes

Heated: Yes
Finished: Yes
Enclosed: Yes
Contiguous: Yes
Permitted: Yes
Wet space: No
Addition: No
Conversion: No

14 Floor 1 - Bath



Dimensions: 5'2" x 5'7"
Area: 29 sq. ft
Counted as living area: Yes

Heated: Yes
Finished: Yes
Enclosed: Yes
Contiguous: Yes
Permitted: Yes
Wet space: Yes
Addition: No
Conversion: No

6020 East Hartford Avenue, Scottsdale, Maricopa County,
Arizona, United States, 85254

15 Floor 1 - Hall



Dimensions: 7'10" x 14'7"
Area: 115 sq. ft
Counted as living area: Yes

Heated: Yes
Finished: Yes
Enclosed: Yes
Contiguous: Yes
Permitted: Yes
Wet space: No
Addition: No
Conversion: No

16 Floor 1 - Bedroom



Dimensions: 11'6" x 11'1"
Area: 128 sq. ft
Counted as living area: Yes

Heated: Yes
Finished: Yes
Enclosed: Yes
Contiguous: Yes
Permitted: Yes
Wet space: No
Addition: No
Conversion: No

17 Floor 1 - Bath



Dimensions: 5'0" x 2'11"
Area: 15 sq. ft
Counted as living area: Yes

Heated: Yes
Finished: Yes
Enclosed: Yes
Contiguous: Yes
Permitted: Yes
Wet space: Yes
Addition: No
Conversion: No

6020 East Hartford Avenue, Scottsdale, Maricopa County,
Arizona, United States, 85254

18 Floor 1 - Garage



Dimensions: 28'10" x 23'10"
Area: 688 sq. ft
Counted as living area: No

Heated: No
Finished: Yes
Enclosed: Yes
Contiguous: Yes
Permitted: Yes
Wet space: No
Addition: No
Conversion: No

19 Floor 1 - Bath



Dimensions: 4'10" x 10'5"
Area: 51 sq. ft
Counted as living area: Yes

Heated: Yes
Finished: Yes
Enclosed: Yes
Contiguous: Yes
Permitted: Yes
Wet space: Yes
Addition: No
Conversion: No

20 Floor 1 - W.I.C.



Dimensions: 6'1" x 12'10"
Area: 78 sq. ft
Counted as living area: Yes

Heated: Yes
Finished: Yes
Enclosed: Yes
Contiguous: Yes
Permitted: Yes
Wet space: No
Addition: No
Conversion: No