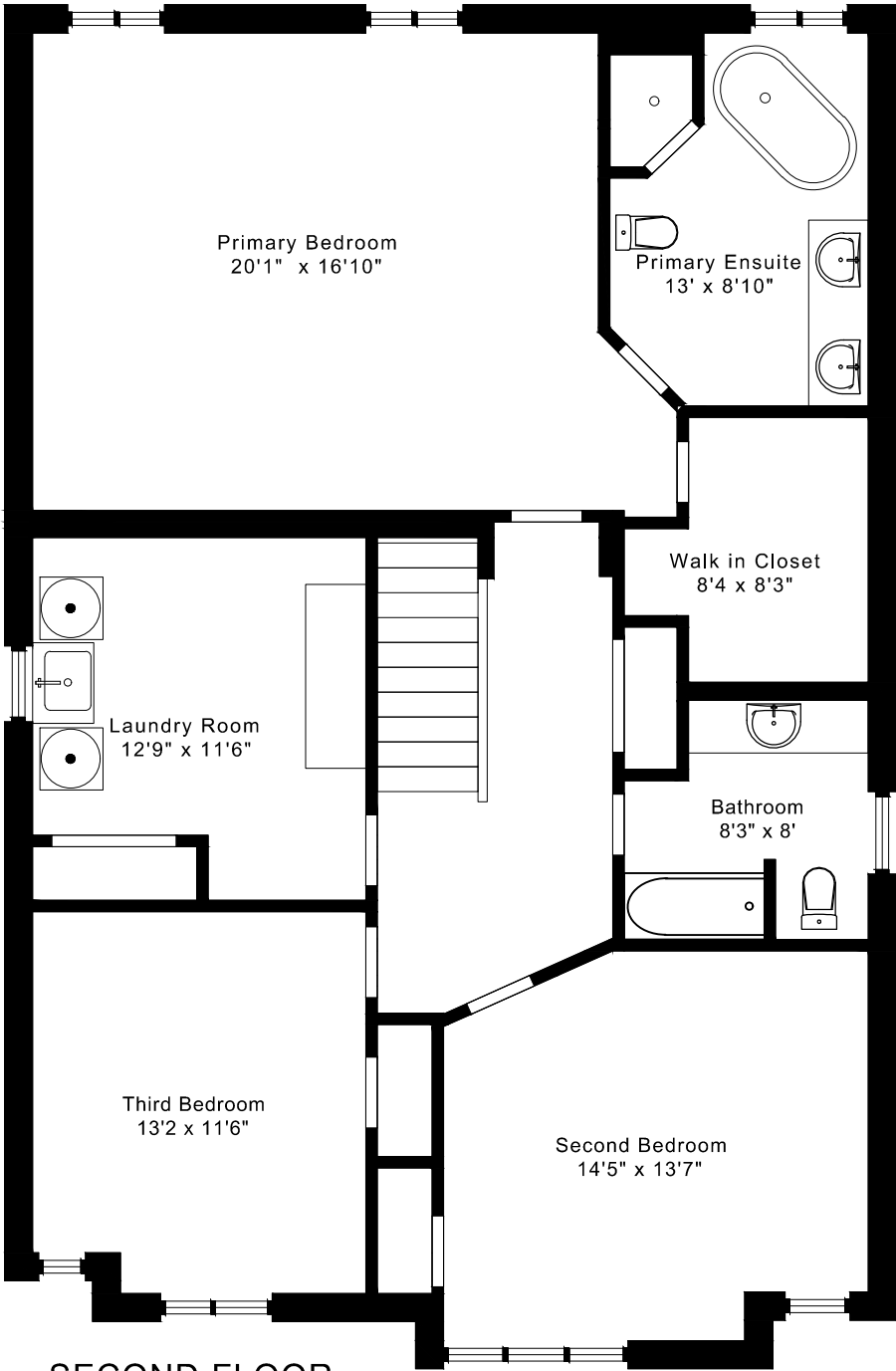
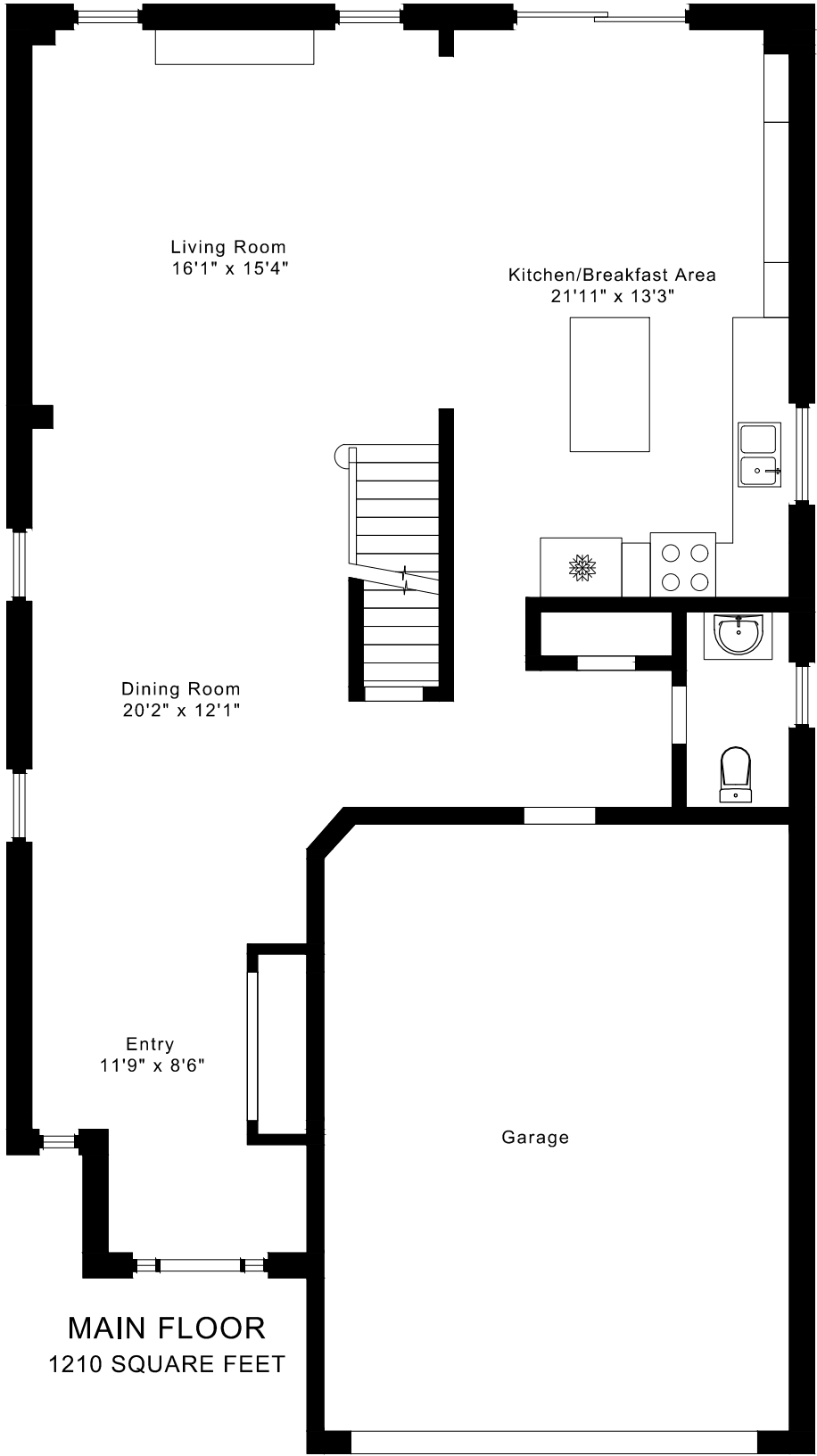
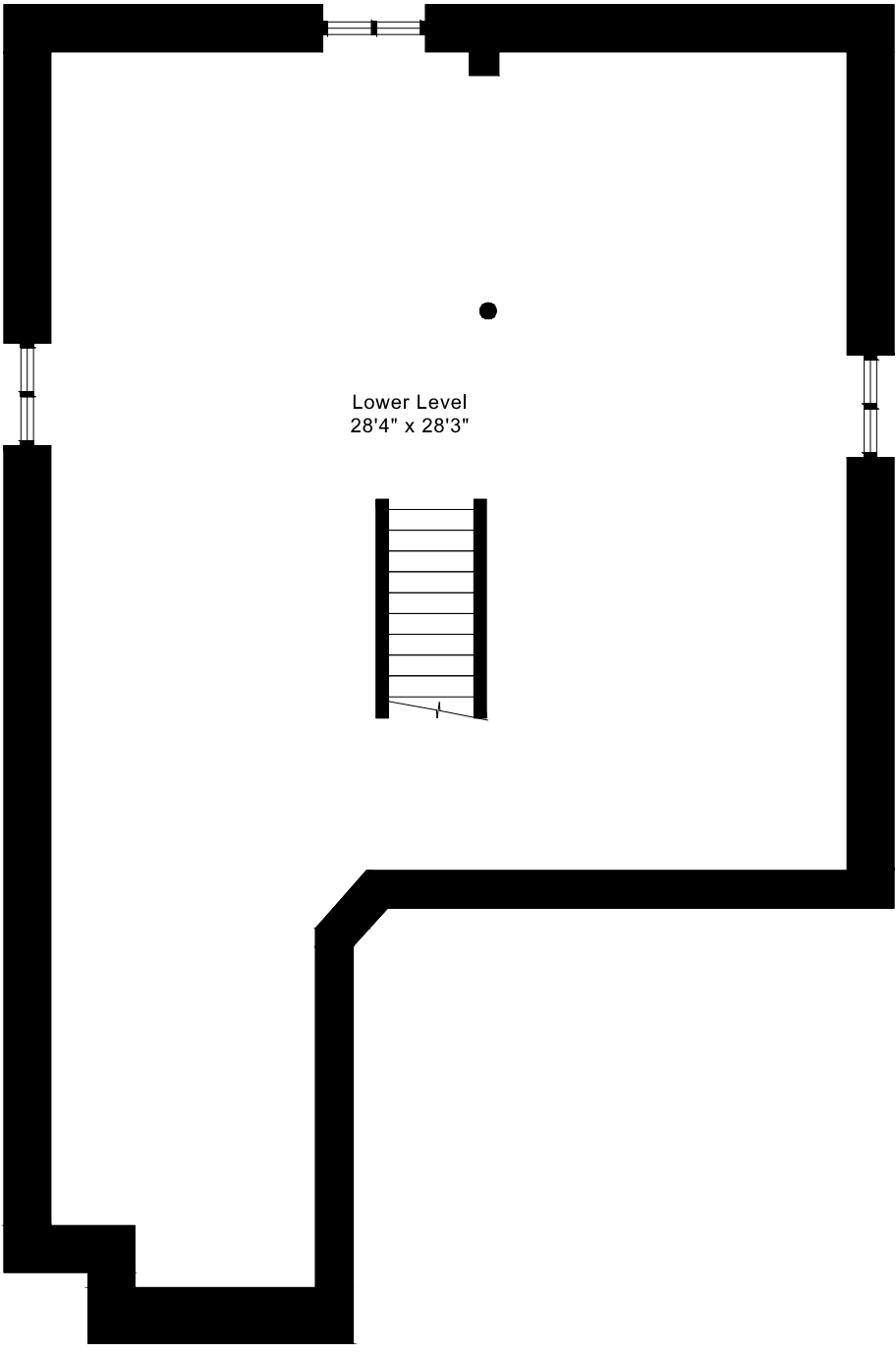


199 KING STREET SOUTH
FLOOR PLANS

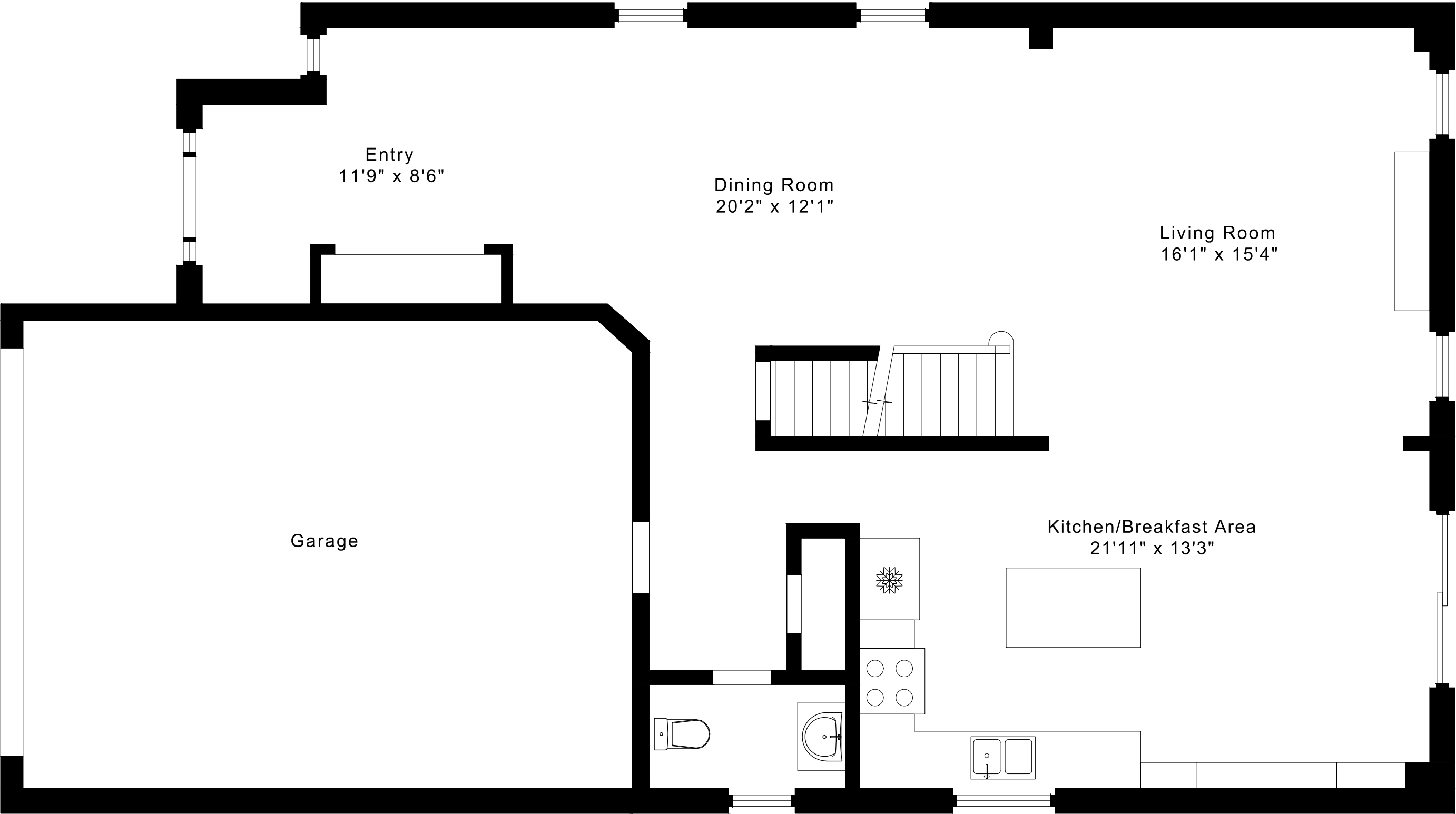


SECOND FLOOR
1445 SQUARE FEET

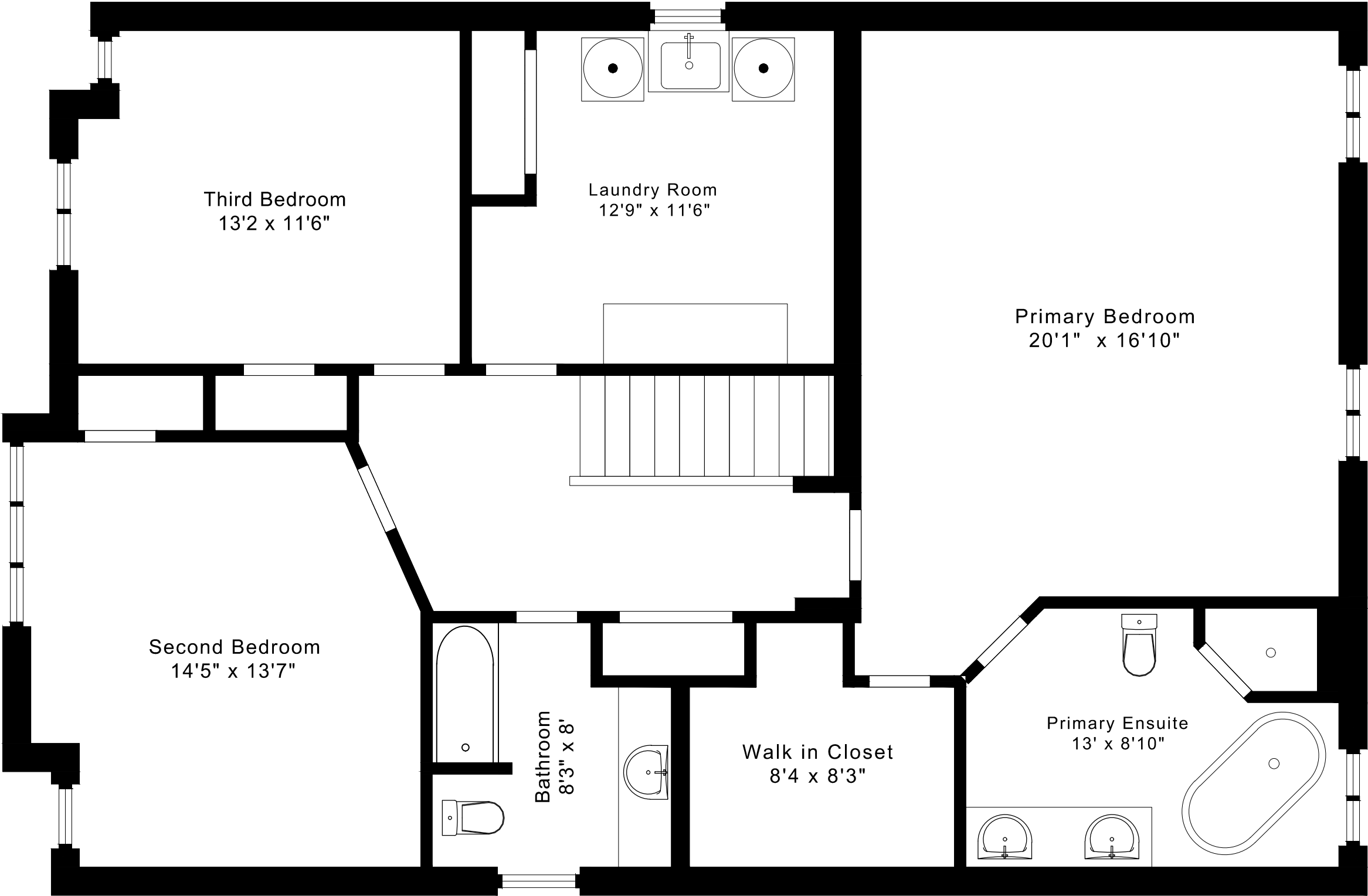


LOWER FLOOR
1210 SQUARE FEET

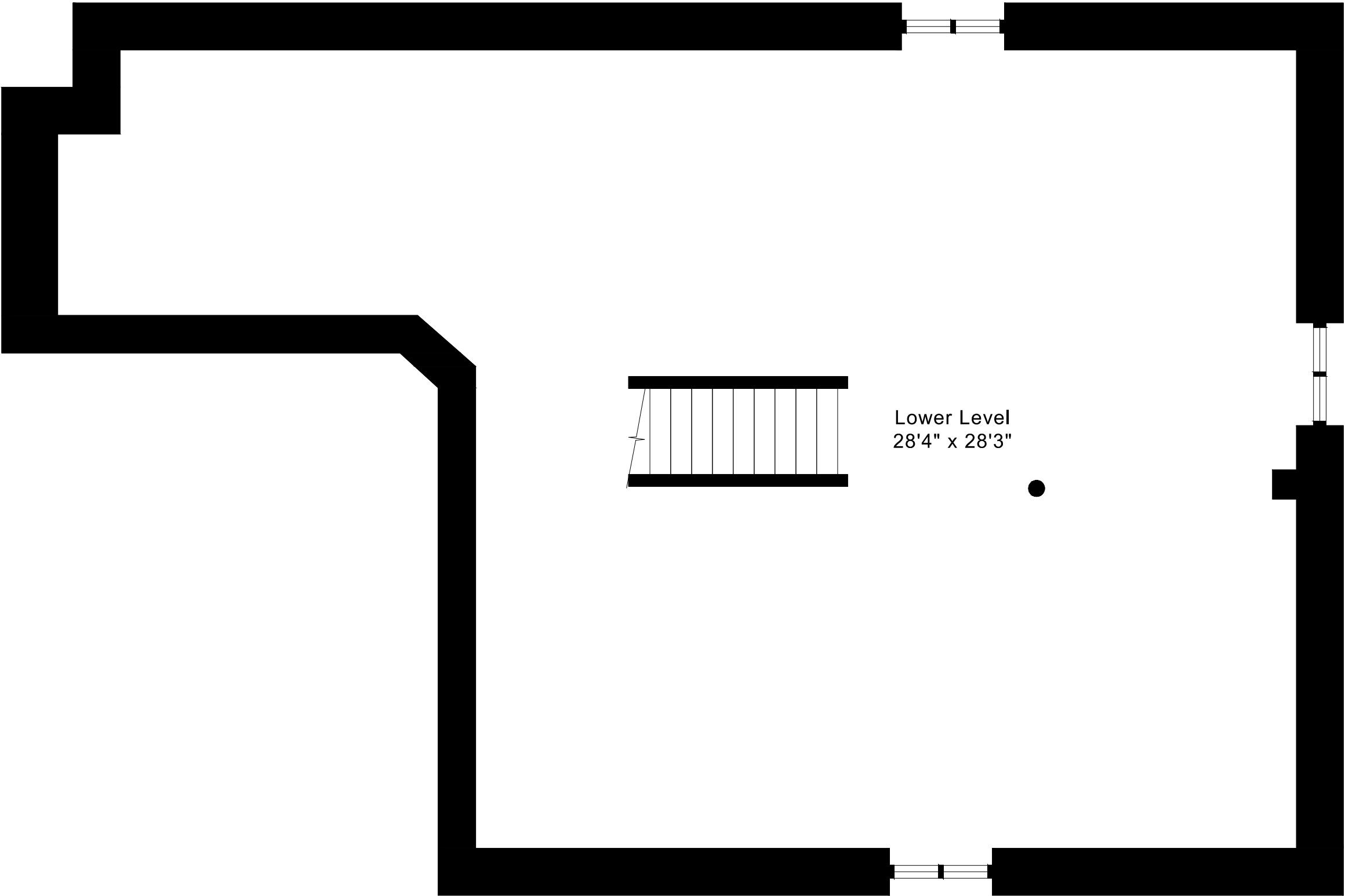
199 KING STREET SOUTH
FLOOR PLANS
MAIN FLOOR 1210 SQUARE FEET



199 KING STREET SOUTH
FLOOR PLANS
SECOND FLOOR 1445 SQUARE FEET



199 KING STREET SOUTH
FLOOR PLANS
LOWER FLOOR 1210 SQUARE FEET



199 KING STREET SOUTH ROOM MEASUREMENTS

Floor	Room	Imperial						Metric [m]		
		Length		Width		Height		Length	Width	Height
		Feet	Inches	Feet	Inches	Feet	Inches			
Second	Primary Bedroom	20	1	16	10	7	11	6,12	5,13	2,41
	Primary Ensuite	13	0	8	10	7	11	3,96	2,69	2,41
	Walk in Closet	8	4	8	3	7	11	2,54	2,51	2,41
	Second Bedroom	14	5	13	7	7	11	4,39	4,14	2,41
	Third Bedroom	10	5	4	11	7	11	3,18	1,50	2,41
	Bathroom	8	3	8	0	7	11	2,51	2,44	2,41
	Laundry Room	12	9	11	6	7	11	3,89	3,51	2,41
Main	Entry	11	9	8	6	8	10	3,58	2,59	2,69
	Living Room	16	1	15	4	8	10	4,90	4,67	2,69
	Dining Room	20	2	12	1	8	10	6,15	3,68	2,69
	Kitchen/Breakfast Area	21	11	13	3	8	10	6,68	4,04	2,69
Lower	Lower Level	28	4	28	3	7	8	8,64	8,61	2,34

The following is a disclaimer regarding the approximate nature of dimensions and floor areas listed in this document:

Disclaimer:

The dimensions and floor areas listed in this document are provided as an estimate only and are intended to be used for illustration purposes only. These measurements are not necessarily meant to be a perfect representation of the actual space.

Notes regarding measurement methods and accuracy:

The utilization of laser measurement technology during the 3D model capturing process at the location provides an accurate representation of floor plans, with a typical margin of error of 3-5%. For the most accurate and official measurement data, it is advised to consult official documents such as MPAC records, builder's pre-construction plans, or data from certified measurement companies.

Exterior wall thickness is included in the calculation of the overall square footage and is considered as a component of the footprint. The wall thickness measurement is obtained onsite whenever possible, or estimated in the event where obtaining onsite measurements is not possible, such as in the case of condominium buildings where wall thickness may vary throughout the building.