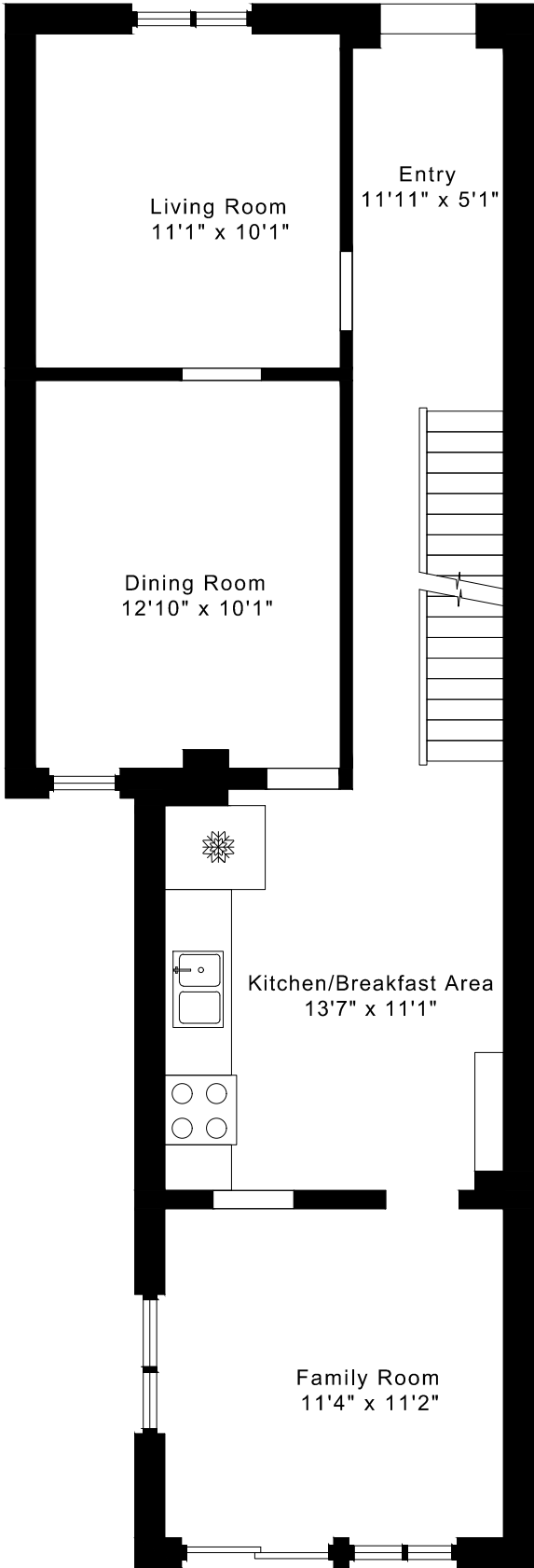
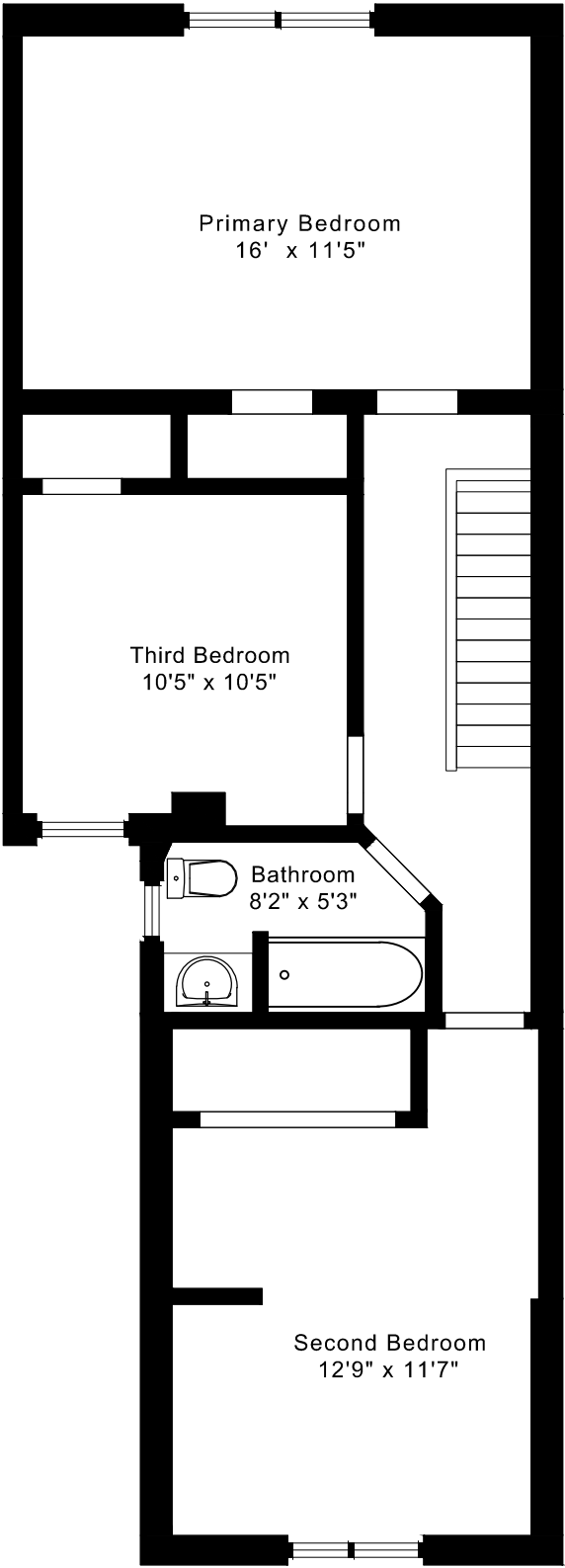


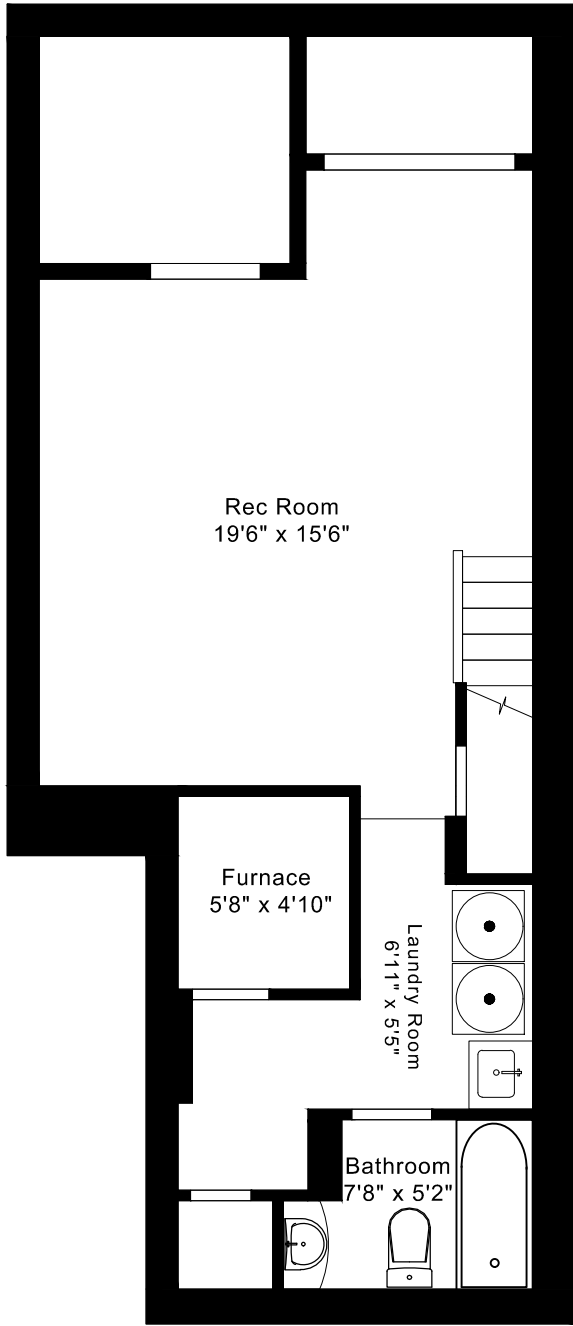
121 MILLICENT STREET  
FLOOR PLANS



MAIN FLOOR  
790 SQUARE FEET



SECOND FLOOR  
750 SQUARE FEET

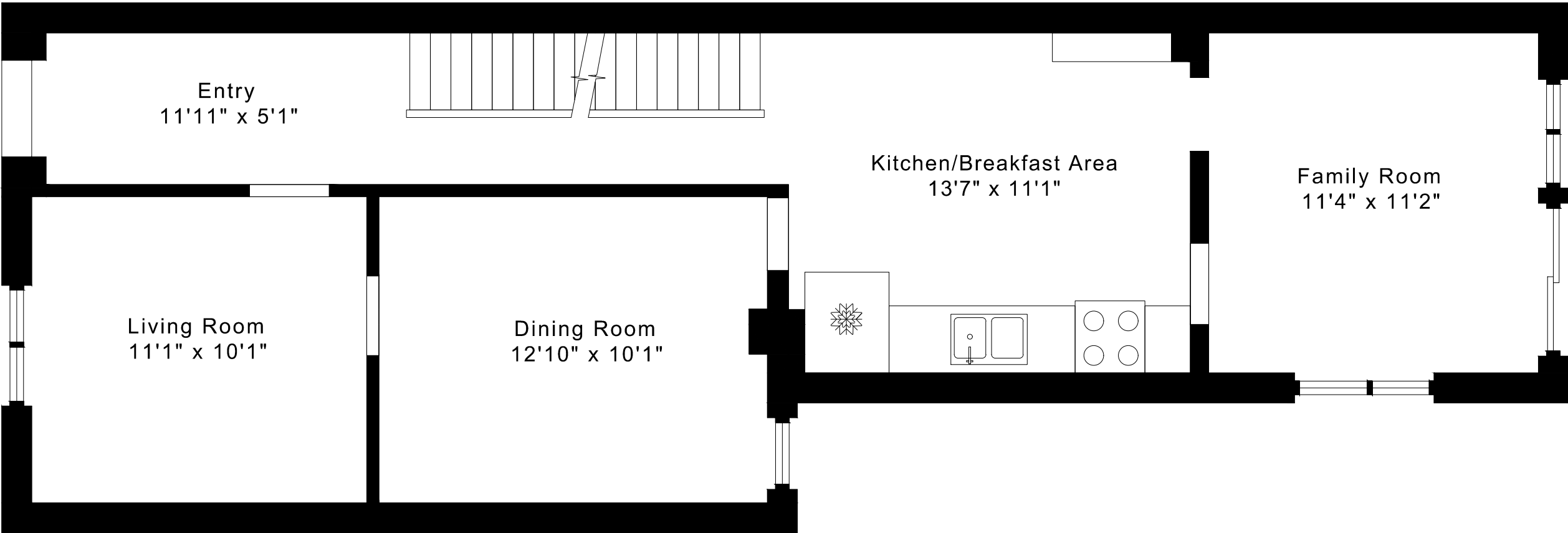


LOWER FLOOR  
640 SQUARE FEET

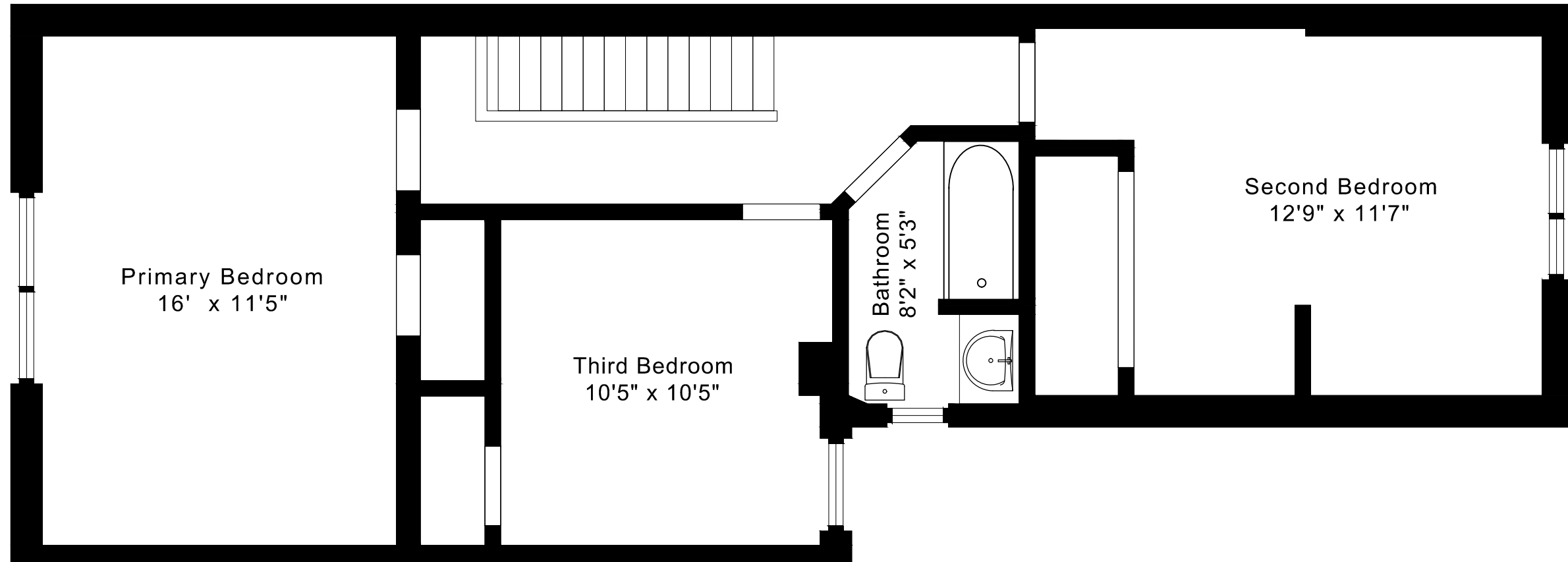
1540 sq ft + 640 sq ft  
BELOW GRADE

121 MILLICENT STREET  
FLOOR PLANS

MAIN FLOOR 790 SQUARE FEET



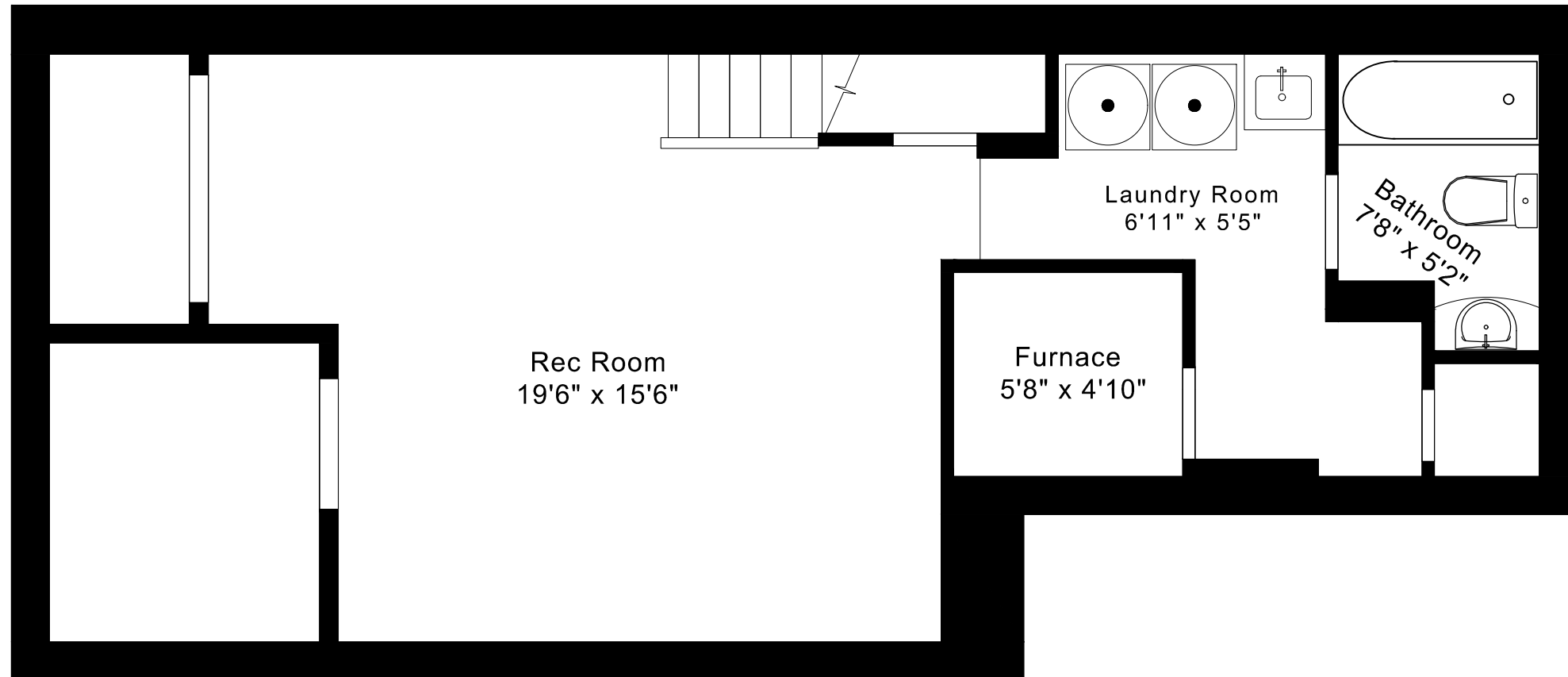
121 MILLICENT STREET  
FLOOR PLANS  
SECOND FLOOR 750 SQUARE FEET



# 121 MILLICENT STREET

## FLOOR PLANS

LOWER FLOOR 640 SQUARE FEET



121 MILLICENT STREET ROOM MEASUREMENTS

Floor	Room	Imperial						Metric [m]		
		Length		Width		Height		Length	Width	Height
		Feet	Inches	Feet	Inches	Feet	Inches			
Second	Primary Bedroom	16	0	11	5	8	6	4,88	3,48	2,59
	Second Bedroom	12	9	11	7	8	2	3,89	3,53	2,49
	Third Bedroom	10	5	10	5	8	6	3,18	3,18	2,59
	Bathroom	8	2	5	3	8	6	2,49	1,60	2,59
Main	Entry	11	11	5	1	8	9	3,63	1,55	2,67
	Living Room	11	1	10	1	8	9	3,38	3,07	2,67
	Dining Room	12	10	10	1	8	9	3,91	3,07	2,67
	Kitchen/Breakfast Area	13	7	11	1	8	9	4,14	3,38	2,67
	Family Room	11	4	11	2	7	10	3,45	3,40	2,39
Lower	Rec Room	19	6	15	6	6	4	5,94	4,72	1,93
	Bathroom	7	8	5	2	6	1	2,34	1,57	1,85
	Laundry Room	6	11	5	5	6	4	2,11	1,65	1,93
	Furnace	5	8	4	10	6	4	1,73	1,47	1,93

CAPTURED ON: 11 FEB 2026  
DIMENSIONS ARE APPROXIMATE AND SHOULD BE CONSIDERED  
ILLUSTRATIVE ONLY.

1540 sq ft + 640 sq ft  
BELOW GRADE

The following is a disclaimer regarding the approximate nature of dimensions and floor areas listed in this document:

---

**Disclaimer:**

The dimensions and floor areas listed in this document are provided as an estimate only and are intended to be used for illustration purposes only. These measurements are not necessarily meant to be a perfect representation of the actual space.

**Notes regarding measurement methods and accuracy:**

The utilization of laser measurement technology during the 3D model capturing process at the location provides an accurate representation of floor plans, with a typical margin of error of 3-5%. For the most accurate and official measurement data, it is advised to consult official documents such as MPAC records, builder's pre-construction plans, or data from certified measurement companies.

Exterior wall thickness is included in the calculation of the overall square footage and is considered as a component of the footprint. The wall thickness measurement is obtained onsite whenever possible, or estimated in the event where obtaining onsite measurements is not possible, such as in the case of condominium buildings where wall thickness may vary throughout the building.