

## Home data report

5122 North 13th Avenue, Alhambra, Phoenix, Maricopa County, Arizona, United States, 85013



**Total Area: 1330 sq. ft**

1st Floor: 1330 sq. ft

Excluded: Shed 121 sq. ft, Porch 64 sq. ft, Patio 235 sq. ft, Covered patio 167 sq. ft, Carport 242 sq. ft, Walls: 123 sq. ft

## Property summary



**1** Floors



**3** Bedrooms



**2** Bathrooms

Home data report

5122 North 13th Avenue, Alhambra, Phoenix, Maricopa County, Arizona, United States, 85013



Room dimensions

Floor 1 Total:1330sqft    Excluded: 829sqft

#		Dimensions	sqft	Counted as living area
1	Shed	11'10" x 10'3"	121 sq. ft	No
2	Patio	18'6" x 16'10"	312 sq. ft	No
3	Bedroom	11'8" x 12'1"	141 sq. ft	Yes
4	Utility	8'0" x 5'6"	44 sq. ft	Yes
5	Primary Bedroom	11'8" x 13'7"	159 sq. ft	Yes
6	Bath	10'1" x 8'3"	84 sq. ft	Yes
7	Covered Patio	18'2" x 13'3"	241 sq. ft	No
8	Porch	6'2" x 10'6"	64 sq. ft	No
9	W.I.C.	4'9" x 4'7"	22 sq. ft	Yes
10	Kitchen	19'5" x 12'4"	240 sq. ft	Yes
11	Foyer	4'8" x 3'10"	18 sq. ft	Yes

## Home data report

**5122 North 13th Avenue, Alhambra, Phoenix, Maricopa County, Arizona, United States, 85013**

#		Dimensions	sqft	Counted as living area
12	Bath	7'3" x 6'6"	47 sq. ft	Yes
13	Laundry	9'1" x 7'11"	71 sq. ft	Yes
14	Bedroom	12'7" x 12'1"	152 sq. ft	Yes
15	Living Room	12'2" x 16'0"	195 sq. ft	Yes
16	Carport	21'0" x 11'6"	242 sq. ft	No
17	Hall	5'0" x 10'2"	51 sq. ft	Yes
18	Dining Area	9'2" x 10'3"	94 sq. ft	Yes

5122 North 13th Avenue, Alhambra, Phoenix, Maricopa County, Arizona, United States, 85013

1 Floor 1 - Shed



Dimensions: 11'10" x 10'3"  
Area: 121 sq. ft  
Counted as living area: No

Heated: No  
Finished: No  
Enclosed: No  
Contiguous: Yes  
Permitted: Yes  
Wet space: No  
Addition: No  
Conversion: No

2 Floor 1 - Patio



Dimensions: 18'6" x 16'10"  
Area: 312 sq. ft  
Counted as living area: No

Heated: No  
Finished: No  
Enclosed: No  
Contiguous: Yes  
Permitted: Yes  
Wet space: No  
Addition: No  
Conversion: No

5122 North 13th Avenue, Alhambra, Phoenix, Maricopa County,  
Arizona, United States, 85013

### 3 Floor 1 - Bedroom



Dimensions: 11'8" x 12'1"  
Area: 141 sq. ft  
Counted as living area: Yes

Heated: Yes  
Finished: Yes  
Enclosed: Yes  
Contiguous: Yes  
Permitted: Yes  
Wet space: No  
Addition: No  
Conversion: No

### 4 Floor 1 - Utility



Dimensions: 8'0" x 5'6"  
Area: 44 sq. ft  
Counted as living area: Yes

Heated: Yes  
Finished: Yes  
Enclosed: Yes  
Contiguous: Yes  
Permitted: Yes  
Wet space: No  
Addition: No  
Conversion: No

### 5 Floor 1 - Primary Bedroom



Dimensions: 11'8" x 13'7"  
Area: 159 sq. ft  
Counted as living area: Yes

Heated: Yes  
Finished: Yes  
Enclosed: Yes  
Contiguous: Yes  
Permitted: Yes  
Wet space: No  
Addition: No  
Conversion: No

## Home data report

5122 North 13th Avenue, Alhambra, Phoenix, Maricopa County, Arizona, United States, 85013

### 6 Floor 1 - Bath



Dimensions: 10'1" x 8'3"  
Area: 84 sq. ft  
Counted as living area: Yes

Heated: Yes  
Finished: Yes  
Enclosed: Yes  
Contiguous: Yes  
Permitted: Yes  
Wet space: Yes  
Addition: No  
Conversion: No

### 7 Floor 1 - Covered Patio



Dimensions: 18'2" x 13'3"  
Area: 241 sq. ft  
Counted as living area: No

Heated: No  
Finished: No  
Enclosed: No  
Contiguous: Yes  
Permitted: Yes  
Wet space: No  
Addition: No  
Conversion: No

### 8 Floor 1 - Porch



Dimensions: 6'2" x 10'6"  
Area: 64 sq. ft  
Counted as living area: No

Heated: No  
Finished: No  
Enclosed: No  
Contiguous: Yes  
Permitted: Yes  
Wet space: No  
Addition: No  
Conversion: No

## Home data report

5122 North 13th Avenue, Alhambra, Phoenix, Maricopa County, Arizona, United States, 85013

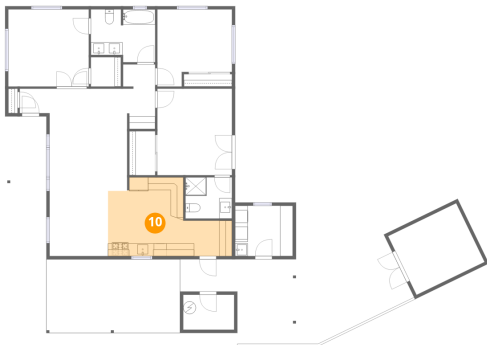
### 9 Floor 1 - W.I.C.



Dimensions: 4'9" x 4'7"  
Area: 22 sq. ft  
Counted as living area: Yes

Heated: Yes  
Finished: Yes  
Enclosed: Yes  
Contiguous: Yes  
Permitted: Yes  
Wet space: No  
Addition: No  
Conversion: No

### 10 Floor 1 - Kitchen



Dimensions: 19'5" x 12'4"  
Area: 240 sq. ft  
Counted as living area: Yes

Heated: Yes  
Finished: Yes  
Enclosed: Yes  
Contiguous: Yes  
Permitted: Yes  
Wet space: No  
Addition: No  
Conversion: No

### 11 Floor 1 - Foyer



Dimensions: 4'8" x 3'10"  
Area: 18 sq. ft  
Counted as living area: Yes

Heated: Yes  
Finished: Yes  
Enclosed: Yes  
Contiguous: Yes  
Permitted: Yes  
Wet space: No  
Addition: No  
Conversion: No

## Home data report

5122 North 13th Avenue, Alhambra, Phoenix, Maricopa County, Arizona, United States, 85013

### 12 Floor 1 - Bath



Dimensions: 7'3" x 6'6"  
Area: 47 sq. ft  
Counted as living area: Yes

Heated: Yes  
Finished: Yes  
Enclosed: Yes  
Contiguous: Yes  
Permitted: Yes  
Wet space: Yes  
Addition: No  
Conversion: No

### 13 Floor 1 - Laundry



Dimensions: 9'1" x 7'11"  
Area: 71 sq. ft  
Counted as living area: Yes

Heated: Yes  
Finished: Yes  
Enclosed: Yes  
Contiguous: Yes  
Permitted: Yes  
Wet space: No  
Addition: No  
Conversion: No

### 14 Floor 1 - Bedroom

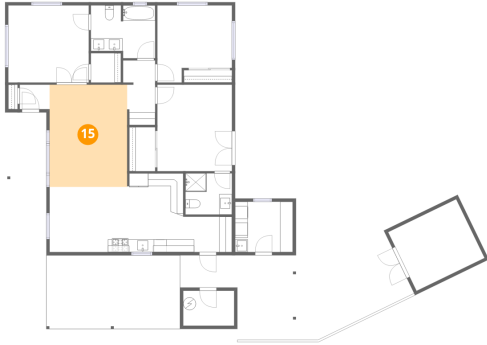


Dimensions: 12'7" x 12'1"  
Area: 152 sq. ft  
Counted as living area: Yes

Heated: Yes  
Finished: Yes  
Enclosed: Yes  
Contiguous: Yes  
Permitted: Yes  
Wet space: No  
Addition: No  
Conversion: No

5122 North 13th Avenue, Alhambra, Phoenix, Maricopa County, Arizona, United States, 85013

## 15 Floor 1 - Living Room



Dimensions: 12'2" x 16'0"  
Area: 195 sq. ft  
Counted as living area: Yes

Heated: Yes  
Finished: Yes  
Enclosed: Yes  
Contiguous: Yes  
Permitted: Yes  
Wet space: No  
Addition: No  
Conversion: No

## 16 Floor 1 - Carport



Dimensions: 21'0" x 11'6"  
Area: 242 sq. ft  
Counted as living area: No

Heated: No  
Finished: Yes  
Enclosed: No  
Contiguous: Yes  
Permitted: Yes  
Wet space: No  
Addition: No  
Conversion: No

## 17 Floor 1 - Hall



Dimensions: 5'0" x 10'2"  
Area: 51 sq. ft  
Counted as living area: Yes

Heated: Yes  
Finished: Yes  
Enclosed: Yes  
Contiguous: Yes  
Permitted: Yes  
Wet space: No  
Addition: No  
Conversion: No

5122 North 13th Avenue, Alhambra, Phoenix, Maricopa County, Arizona, United States, 85013

**18** Floor 1 - Dining Area



Dimensions: 9'2" x 10'3"  
Area: 94 sq. ft  
Counted as living area: Yes

Heated: Yes  
Finished: Yes  
Enclosed: Yes  
Contiguous: Yes  
Permitted: Yes  
Wet space: No  
Addition: No  
Conversion: No