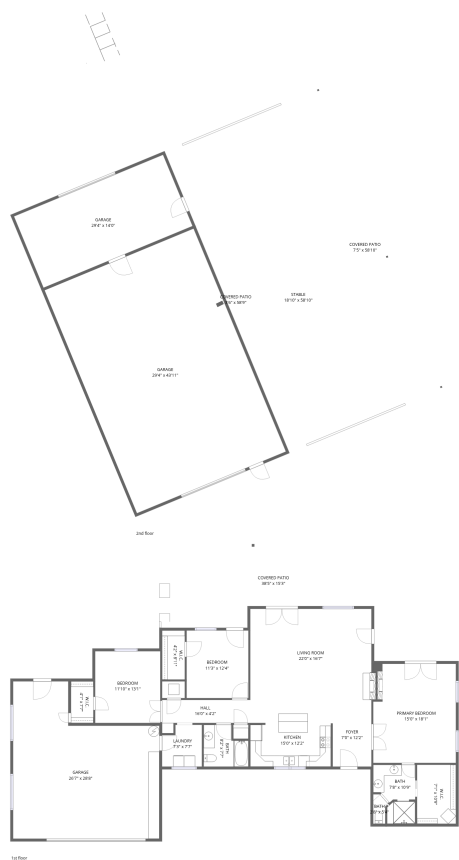


Home data report

39913 North 26th Street, Cave Creek, Maricopa County, Arizona,  
United States, 85331



**Total Area: 1666 sq. ft**  
1st Floor: 1666 sq. ft, 2nd Floor: 0 sq. ft  
Excluded: Garage 2329 sq. ft, Covered patio 1056 sq. ft, Stable 1140 sq. ft, Walls: 252 sq. ft

Property summary

**2**  
Floors

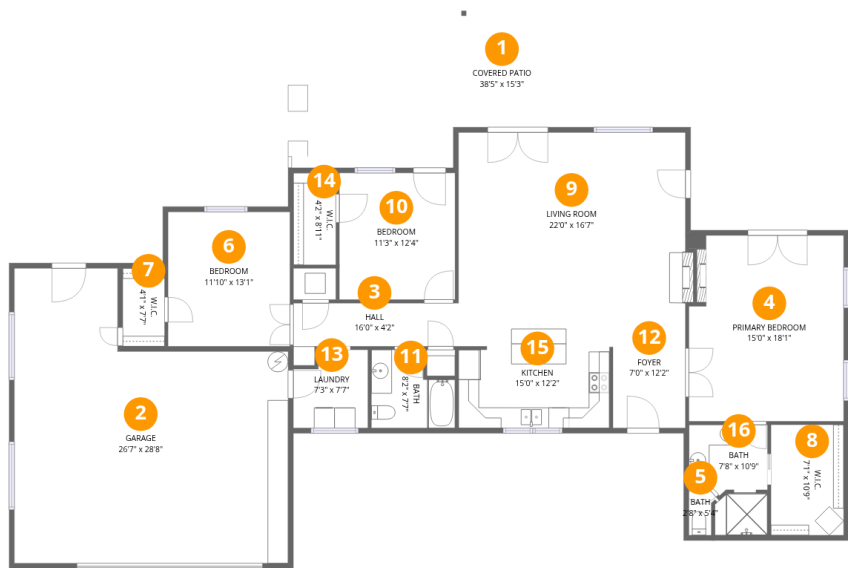
**3**  
Bedrooms

**2**  
Bathrooms

**3**  
Garages

Home data report

39913 North 26th Street, Cave Creek, Maricopa County, Arizona,  
United States, 85331



Room dimensions

Floor 1 Total:1666sqft   Excluded: 1043sqft

#		Dimensions	sqft	Counted as living area
1	Covered Patio	38'5" x 15'3"	586 sq. ft	No
2	Garage	26'7" x 28'8"	761 sq. ft	No
3	Hall	16'0" x 4'2"	67 sq. ft	Yes
4	Primary Bedroom	15'0" x 18'1"	271 sq. ft	Yes
5	Bath	2'8" x 5'4"	14 sq. ft	Yes
6	Bedroom	11'10" x 13'1"	154 sq. ft	Yes
7	W.I.C.	4'1" x 7'7"	31 sq. ft	Yes
8	W.I.C.	7'1" x 10'9"	76 sq. ft	Yes
9	Living Room	22'0" x 16'7"	365 sq. ft	Yes
10	Bedroom	11'3" x 12'4"	138 sq. ft	Yes
11	Bath	8'2" x 7'7"	62 sq. ft	Yes

## Home data report

**39913 North 26th Street, Cave Creek, Maricopa County, Arizona,  
United States, 85331**

#		Dimensions	sqft	Counted as living area
12	Foyer	7'0" x 12'2"	85 sq. ft	Yes
13	Laundry	7'3" x 7'7"	55 sq. ft	Yes
14	W.I.C.	4'2" x 8'11"	37 sq. ft	Yes
15	Kitchen	15'0" x 12'2"	182 sq. ft	Yes
16	Bath	7'8" x 10'9"	82 sq. ft	Yes

Home data report

39913 North 26th Street, Cave Creek, Maricopa County, Arizona,  
United States, 85331

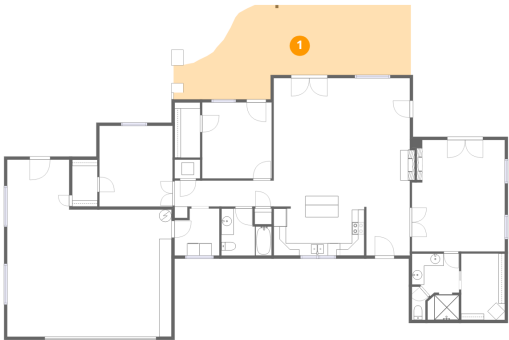


Room dimensions

Floor 2 Total:0sqft Excluded: 3482sqft

#		Dimensions	sqft	Counted as living area
17	Garage	29'4" x 14'0"	412 sq. ft	No
18	Stable	18'10" x 58'10"	1106 sq. ft	No
19	Covered Patio	7'5" x 58'10"	437 sq. ft	No
20	Garage	29'4" x 43'11"	1289 sq. ft	No
21	Covered Patio	3'6" x 58'9"	204 sq. ft	No

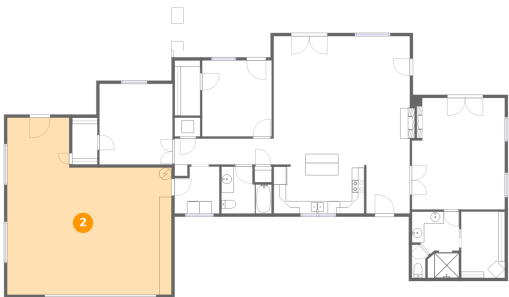
1 Floor 1 - Covered Patio



Dimensions: 38'5" x 15'3"  
Area: 586 sq. ft  
Counted as living area: No

Heated: No  
Finished: No  
Enclosed: No  
Contiguous: Yes  
Permitted: Yes  
Wet space: No  
Addition: No  
Conversion: No

2 Floor 1 - Garage



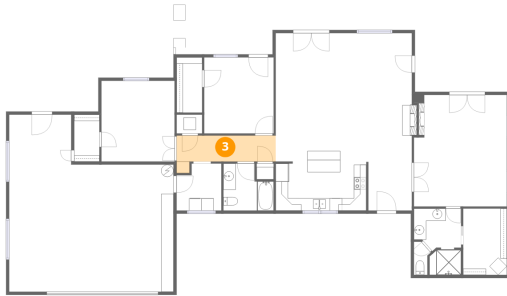
Dimensions: 26'7" x 28'8"  
Area: 761 sq. ft  
Counted as living area: No

Heated: No  
Finished: No  
Enclosed: Yes  
Contiguous: Yes  
Permitted: Yes  
Wet space: No  
Addition: No  
Conversion: No

## Home data report

39913 North 26th Street, Cave Creek, Maricopa County, Arizona,  
United States, 85331

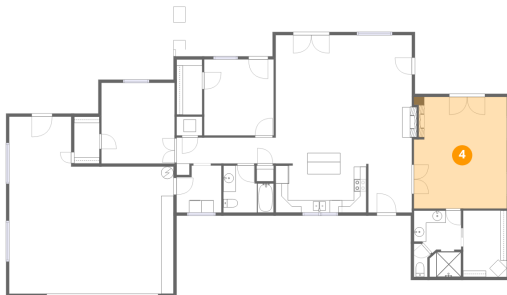
### 3 Floor 1 - Hall



Dimensions: 16'0" x 4'2"  
Area: 67 sq. ft  
Counted as living area: Yes

Heated: Yes  
Finished: Yes  
Enclosed: Yes  
Contiguous: Yes  
Permitted: Yes  
Wet space: No  
Addition: No  
Conversion: No

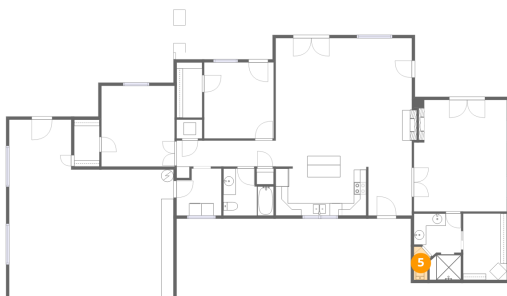
### 4 Floor 1 - Primary Bedroom



Dimensions: 15'0" x 18'1"  
Area: 271 sq. ft  
Counted as living area: Yes

Heated: Yes  
Finished: Yes  
Enclosed: Yes  
Contiguous: Yes  
Permitted: Yes  
Wet space: No  
Addition: No  
Conversion: No

### 5 Floor 1 - Bath



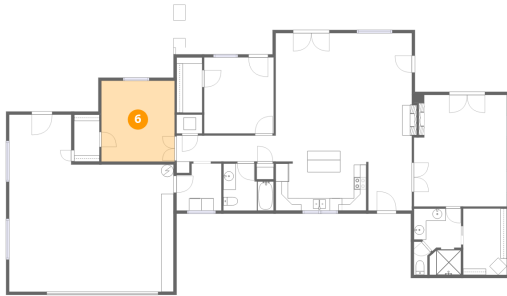
Dimensions: 2'8" x 5'4"  
Area: 14 sq. ft  
Counted as living area: Yes

Heated: Yes  
Finished: Yes  
Enclosed: Yes  
Contiguous: Yes  
Permitted: Yes  
Wet space: No  
Addition: No  
Conversion: No

## Home data report

39913 North 26th Street, Cave Creek, Maricopa County, Arizona,  
United States, 85331

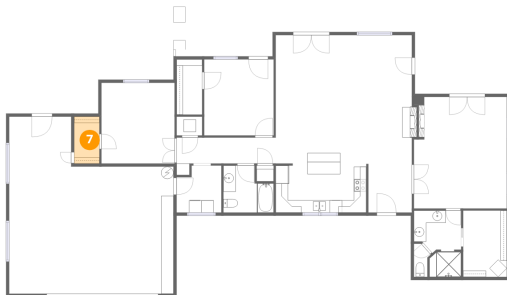
### 6 Floor 1 - Bedroom



Dimensions: 11'10" x 13'1"  
Area: 154 sq. ft  
Counted as living area: Yes

Heated: Yes  
Finished: Yes  
Enclosed: Yes  
Contiguous: Yes  
Permitted: Yes  
Wet space: No  
Addition: No  
Conversion: No

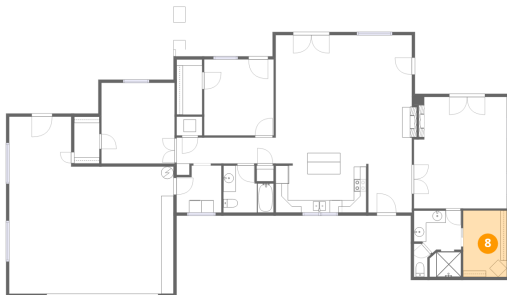
### 7 Floor 1 - W.I.C.



Dimensions: 4'1" x 7'7"  
Area: 31 sq. ft  
Counted as living area: Yes

Heated: Yes  
Finished: Yes  
Enclosed: Yes  
Contiguous: Yes  
Permitted: Yes  
Wet space: No  
Addition: No  
Conversion: No

### 8 Floor 1 - W.I.C.

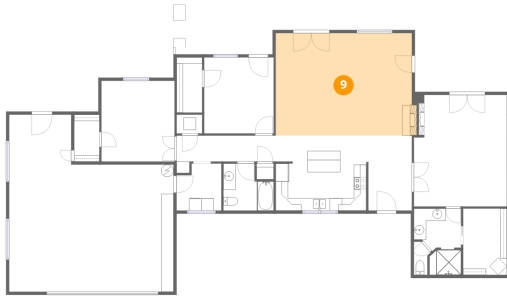


Dimensions: 7'1" x 10'9"  
Area: 76 sq. ft  
Counted as living area: Yes

Heated: Yes  
Finished: Yes  
Enclosed: Yes  
Contiguous: Yes  
Permitted: Yes  
Wet space: No  
Addition: No  
Conversion: No

39913 North 26th Street, Cave Creek, Maricopa County, Arizona,  
United States, 85331

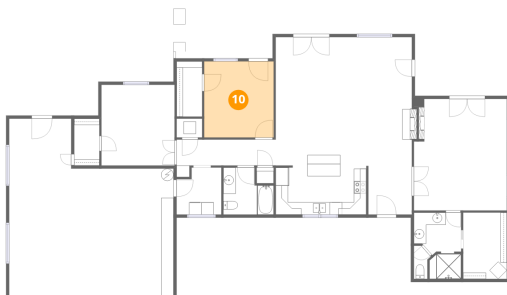
## 9 Floor 1 - Living Room



Dimensions: 22'0" x 16'7"  
Area: 365 sq. ft  
Counted as living area: Yes

Heated: Yes  
Finished: Yes  
Enclosed: Yes  
Contiguous: Yes  
Permitted: Yes  
Wet space: No  
Addition: No  
Conversion: No

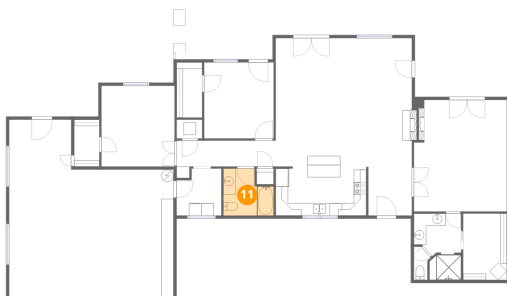
## 10 Floor 1 - Bedroom



Dimensions: 11'3" x 12'4"  
Area: 138 sq. ft  
Counted as living area: Yes

Heated: Yes  
Finished: Yes  
Enclosed: Yes  
Contiguous: Yes  
Permitted: Yes  
Wet space: No  
Addition: No  
Conversion: No

## 11 Floor 1 - Bath



Dimensions: 8'2" x 7'7"  
Area: 62 sq. ft  
Counted as living area: Yes

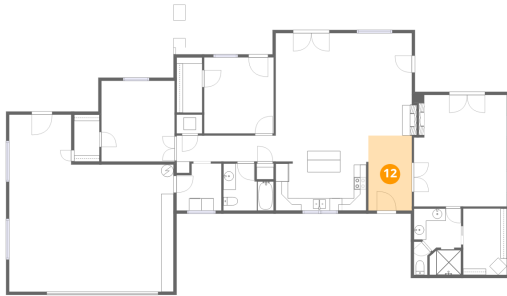
Heated: Yes  
Finished: Yes  
Enclosed: Yes  
Contiguous: Yes  
Permitted: Yes  
Wet space: Yes  
Addition: No  
Conversion: No



## Home data report

39913 North 26th Street, Cave Creek, Maricopa County, Arizona,  
United States, 85331

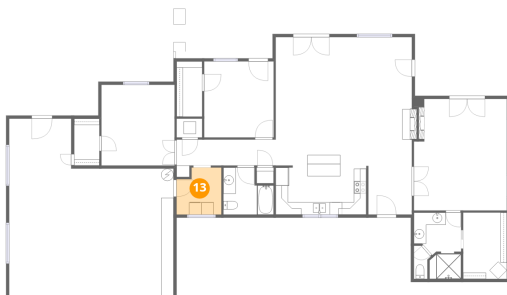
### 12 Floor 1 - Foyer



Dimensions: 7'0" x 12'2"  
Area: 85 sq. ft  
Counted as living area: Yes

Heated: Yes  
Finished: Yes  
Enclosed: Yes  
Contiguous: Yes  
Permitted: Yes  
Wet space: No  
Addition: No  
Conversion: No

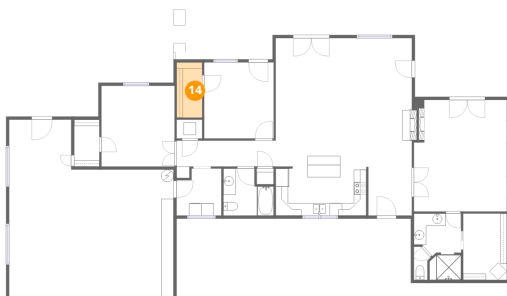
### 13 Floor 1 - Laundry



Dimensions: 7'3" x 7'7"  
Area: 55 sq. ft  
Counted as living area: Yes

Heated: Yes  
Finished: Yes  
Enclosed: Yes  
Contiguous: Yes  
Permitted: Yes  
Wet space: No  
Addition: No  
Conversion: No

### 14 Floor 1 - W.I.C.

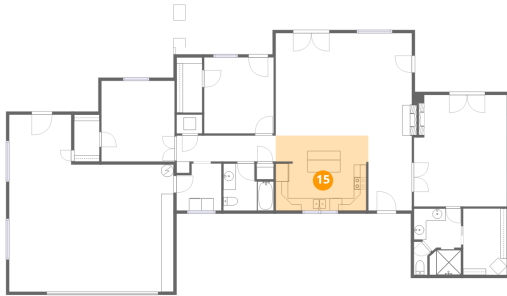


Dimensions: 4'2" x 8'11"  
Area: 37 sq. ft  
Counted as living area: Yes

Heated: Yes  
Finished: Yes  
Enclosed: Yes  
Contiguous: Yes  
Permitted: Yes  
Wet space: No  
Addition: No  
Conversion: No

39913 North 26th Street, Cave Creek, Maricopa County, Arizona,  
United States, 85331

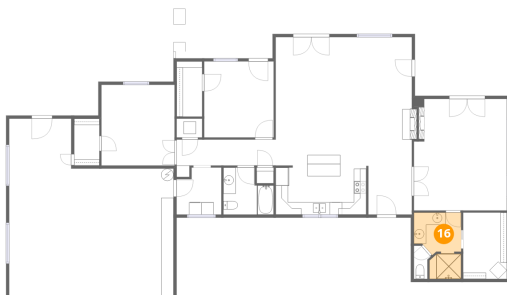
## 15 Floor 1 - Kitchen



Dimensions: 15'0" x 12'2"  
Area: 182 sq. ft  
Counted as living area: Yes

Heated: Yes  
Finished: Yes  
Enclosed: Yes  
Contiguous: Yes  
Permitted: Yes  
Wet space: No  
Addition: No  
Conversion: No

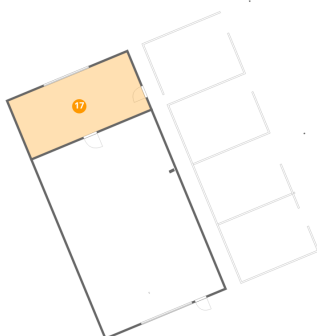
## 16 Floor 1 - Bath



Dimensions: 7'8" x 10'9"  
Area: 82 sq. ft  
Counted as living area: Yes

Heated: Yes  
Finished: Yes  
Enclosed: Yes  
Contiguous: Yes  
Permitted: Yes  
Wet space: Yes  
Addition: No  
Conversion: No

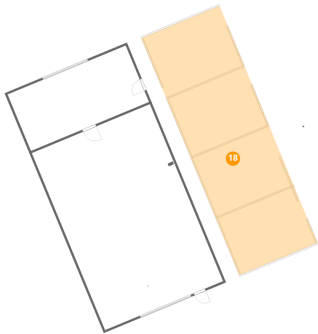
## 17 Floor 2 - Garage



Dimensions: 29'4" x 14'0"  
Area: 412 sq. ft  
Counted as living area: No

Heated: No  
Finished: No  
Enclosed: Yes  
Contiguous: Yes  
Permitted: Yes  
Wet space: No  
Addition: No  
Conversion: No

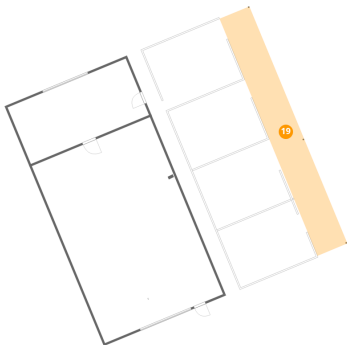
18 Floor 2 - Stable



Dimensions: 18'10" x 58'10"  
Area: 1106 sq. ft  
Counted as living area: No

Heated: No  
Finished: No  
Enclosed: No  
Contiguous: Yes  
Permitted: Yes  
Wet space: No  
Addition: No  
Conversion: No

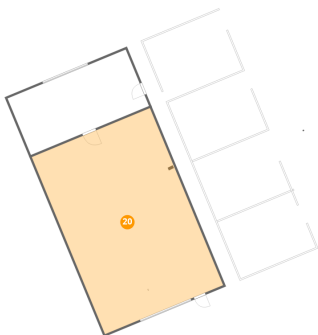
19 Floor 2 - Covered Patio



Dimensions: 7'5" x 58'10"  
Area: 437 sq. ft  
Counted as living area: No

Heated: No  
Finished: No  
Enclosed: No  
Contiguous: Yes  
Permitted: Yes  
Wet space: No  
Addition: No  
Conversion: No

20 Floor 2 - Garage

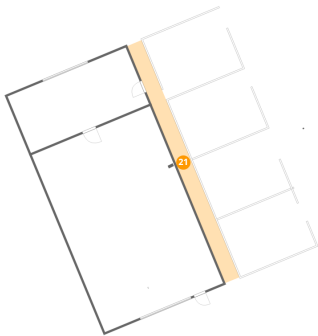


Dimensions: 29'4" x 43'11"  
Area: 1289 sq. ft  
Counted as living area: No

Heated: No  
Finished: No  
Enclosed: Yes  
Contiguous: Yes  
Permitted: Yes  
Wet space: No  
Addition: No  
Conversion: No

39913 North 26th Street, Cave Creek, Maricopa County, Arizona,  
United States, 85331

**21** Floor 2 - Covered Patio



Dimensions: 3'6" x 58'9"  
Area: 204 sq. ft  
Counted as living area: No

Heated: No  
Finished: No  
Enclosed: No  
Contiguous: Yes  
Permitted: Yes  
Wet space: No  
Addition: No  
Conversion: No