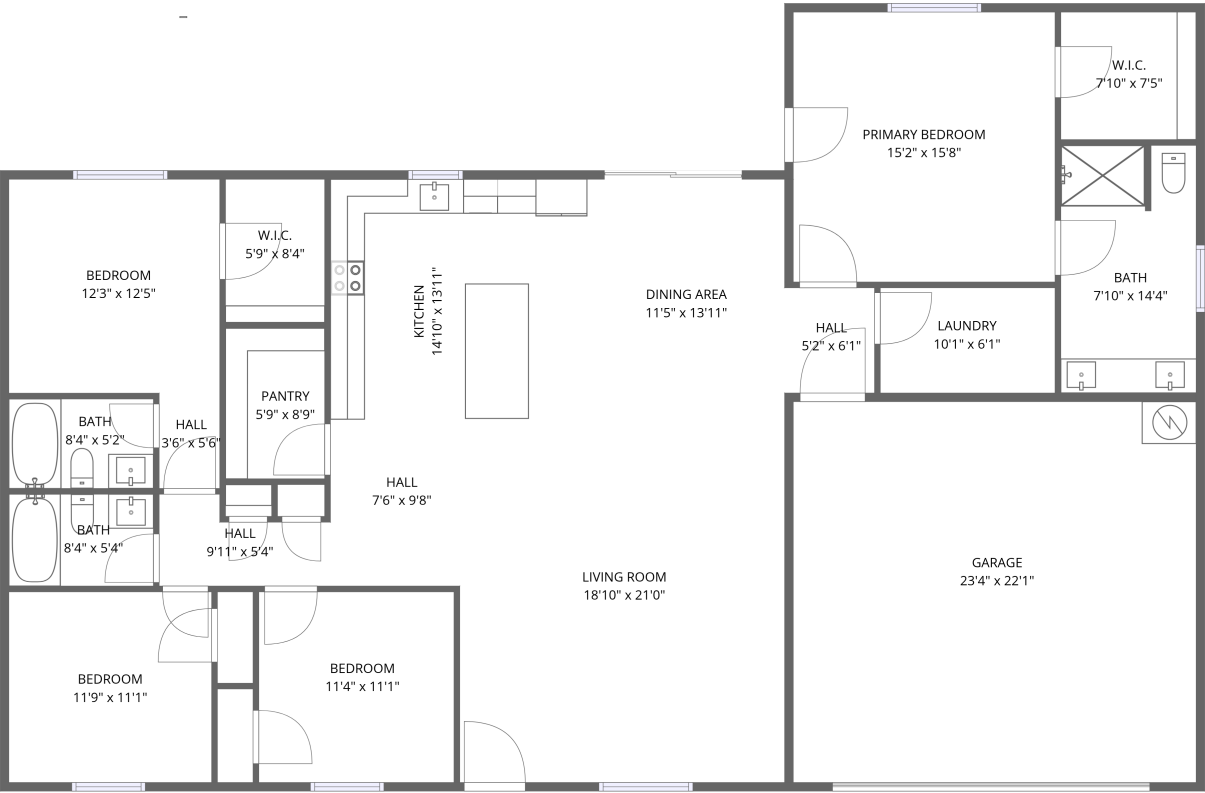


Home data report

46210 N 36th Ave, New River, Maricopa County, Arizona, United States, 85087



1st floor

Total Area: 2089 sq. ft

1st Floor: 2089 sq. ft

Excluded: Garage 514 sq. ft, Walls: 138 sq. ft

Property summary

 **1** Floors

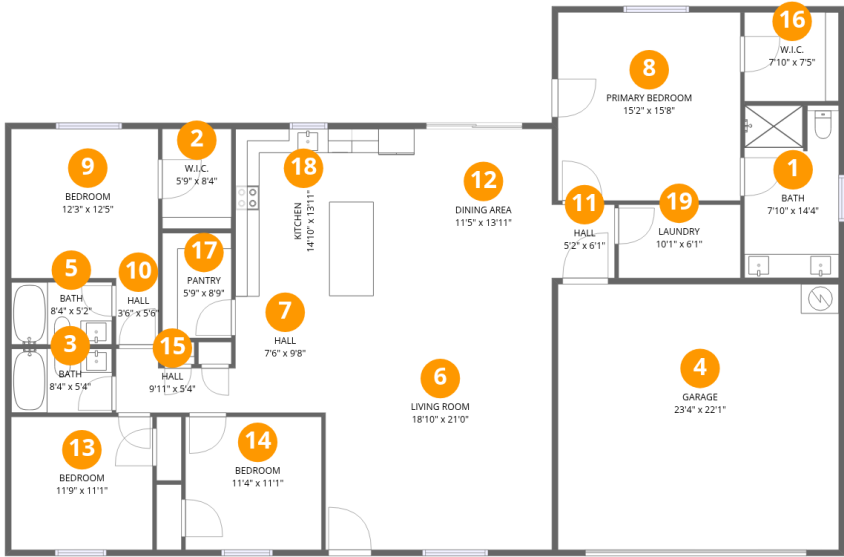
 **4** Bedrooms

 **3** Bathrooms

 **1** Garages

Home data report

46210 N 36th Ave, New River, Maricopa County, Arizona, United States, 85087



Room dimensions

Floor 1

Total:2089sqft Excluded: 514sqft

#		Dimensions	sqft	Counted as living area
1	Bath	7'10" x 14'4"	112 sq. ft	Yes
2	W.I.C.	5'9" x 8'4"	48 sq. ft	Yes
3	Bath	8'4" x 5'4"	45 sq. ft	Yes
4	Garage	23'4" x 22'1"	514 sq. ft	No
5	Bath	8'4" x 5'2"	43 sq. ft	Yes
6	Living Room	18'10" x 21'0"	396 sq. ft	Yes
7	Hall	7'6" x 9'8"	72 sq. ft	Yes
8	Primary Bedroom	15'2" x 15'8"	237 sq. ft	Yes
9	Bedroom	12'3" x 12'5"	151 sq. ft	Yes
10	Hall	3'6" x 5'6"	19 sq. ft	Yes
11	Hall	5'2" x 6'1"	32 sq. ft	Yes

Home data report

46210 N 36th Ave, New River, Maricopa County, Arizona, United States, 85087

#		Dimensions	sqft	Counted as living area
12	Dining Area	11'5" x 13'11"	159 sq. ft	Yes
13	Bedroom	11'9" x 11'1"	130 sq. ft	Yes
14	Bedroom	11'4" x 11'1"	125 sq. ft	Yes
15	Hall	9'11" x 5'4"	53 sq. ft	Yes
16	W.I.C.	7'10" x 7'5"	58 sq. ft	Yes
17	Pantry	5'9" x 8'9"	50 sq. ft	Yes
18	Kitchen	14'10" x 13'11"	206 sq. ft	Yes
19	Laundry	10'1" x 6'1"	62 sq. ft	Yes

1 Floor 1 - Bath



Dimensions: 7'10" x 14'4"
Area: 112 sq. ft
Counted as living area: Yes

Heated: Yes
Finished: Yes
Enclosed: Yes
Contiguous: Yes
Permitted: Yes
Wet space: Yes
Addition: No
Conversion: No

2 Floor 1 - W.I.C.



Dimensions: 5'9" x 8'4"
Area: 48 sq. ft
Counted as living area: Yes

Heated: Yes
Finished: Yes
Enclosed: Yes
Contiguous: Yes
Permitted: Yes
Wet space: No
Addition: No
Conversion: No

46210 N 36th Ave, New River, Maricopa County, Arizona, United States, 85087

3 Floor 1 - Bath



Dimensions: 8'4" x 5'4"
Area: 45 sq. ft
Counted as living area: Yes

Heated: Yes
Finished: Yes
Enclosed: Yes
Contiguous: Yes
Permitted: Yes
Wet space: Yes
Addition: No
Conversion: No

4 Floor 1 - Garage



Dimensions: 23'4" x 22'1"
Area: 514 sq. ft
Counted as living area: No

Heated: No
Finished: No
Enclosed: Yes
Contiguous: Yes
Permitted: Yes
Wet space: No
Addition: No
Conversion: No

5 Floor 1 - Bath

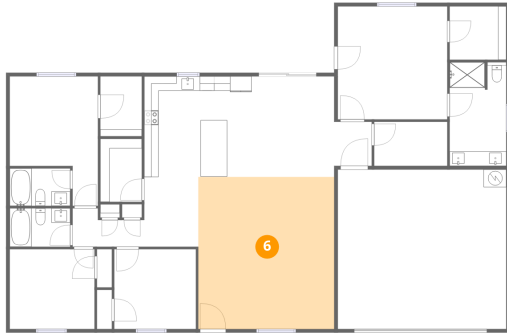


Dimensions: 8'4" x 5'2"
Area: 43 sq. ft
Counted as living area: Yes

Heated: Yes
Finished: Yes
Enclosed: Yes
Contiguous: Yes
Permitted: Yes
Wet space: Yes
Addition: No
Conversion: No

46210 N 36th Ave, New River, Maricopa County, Arizona, United States, 85087

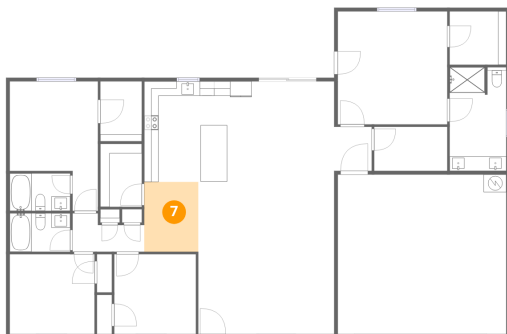
6 Floor 1 - Living Room



Dimensions: 18'10" x 21'0"
Area: 396 sq. ft
Counted as living area: Yes

Heated: Yes
Finished: Yes
Enclosed: Yes
Contiguous: Yes
Permitted: Yes
Wet space: No
Addition: No
Conversion: No

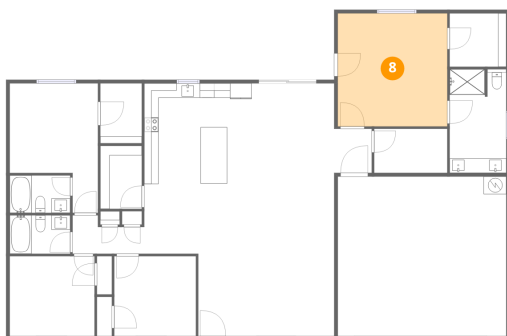
7 Floor 1 - Hall



Dimensions: 7'6" x 9'8"
Area: 72 sq. ft
Counted as living area: Yes

Heated: Yes
Finished: Yes
Enclosed: Yes
Contiguous: Yes
Permitted: Yes
Wet space: No
Addition: No
Conversion: No

8 Floor 1 - Primary Bedroom



Dimensions: 15'2" x 15'8"
Area: 237 sq. ft
Counted as living area: Yes

Heated: Yes
Finished: Yes
Enclosed: Yes
Contiguous: Yes
Permitted: Yes
Wet space: No
Addition: No
Conversion: No

46210 N 36th Ave, New River, Maricopa County, Arizona, United States, 85087

9 Floor 1 - Bedroom



Dimensions: 12'3" x 12'5"
Area: 151 sq. ft
Counted as living area: Yes

Heated: Yes
Finished: Yes
Enclosed: Yes
Contiguous: Yes
Permitted: Yes
Wet space: No
Addition: No
Conversion: No

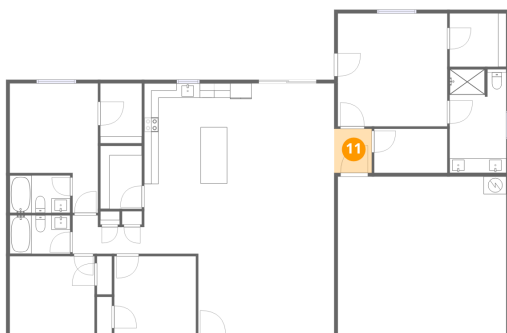
10 Floor 1 - Hall



Dimensions: 3'6" x 5'6"
Area: 19 sq. ft
Counted as living area: Yes

Heated: Yes
Finished: Yes
Enclosed: Yes
Contiguous: Yes
Permitted: Yes
Wet space: No
Addition: No
Conversion: No

11 Floor 1 - Hall

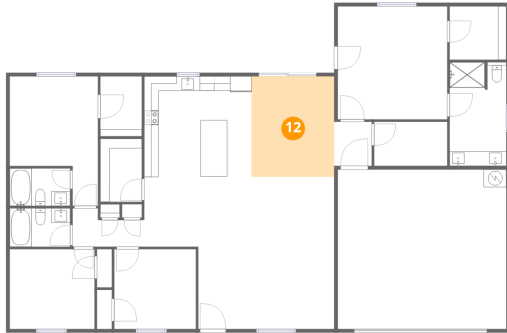


Dimensions: 5'2" x 6'1"
Area: 32 sq. ft
Counted as living area: Yes

Heated: Yes
Finished: Yes
Enclosed: Yes
Contiguous: Yes
Permitted: Yes
Wet space: No
Addition: No
Conversion: No

46210 N 36th Ave, New River, Maricopa County, Arizona, United States, 85087

12 Floor 1 - Dining Area



Dimensions: 11'5" x 13'11"
Area: 159 sq. ft
Counted as living area: Yes

Heated: Yes
Finished: Yes
Enclosed: Yes
Contiguous: Yes
Permitted: Yes
Wet space: No
Addition: No
Conversion: No

13 Floor 1 - Bedroom



Dimensions: 11'9" x 11'1"
Area: 130 sq. ft
Counted as living area: Yes

Heated: Yes
Finished: Yes
Enclosed: Yes
Contiguous: Yes
Permitted: Yes
Wet space: No
Addition: No
Conversion: No

14 Floor 1 - Bedroom



Dimensions: 11'4" x 11'1"
Area: 125 sq. ft
Counted as living area: Yes

Heated: Yes
Finished: Yes
Enclosed: Yes
Contiguous: Yes
Permitted: Yes
Wet space: No
Addition: No
Conversion: No

46210 N 36th Ave, New River, Maricopa County, Arizona, United States, 85087

15 Floor 1 - Hall



Dimensions: 9'11" x 5'4"
Area: 53 sq. ft
Counted as living area: Yes

Heated: Yes
Finished: Yes
Enclosed: Yes
Contiguous: Yes
Permitted: Yes
Wet space: No
Addition: No
Conversion: No

16 Floor 1 - W.I.C.



Dimensions: 7'10" x 7'5"
Area: 58 sq. ft
Counted as living area: Yes

Heated: Yes
Finished: Yes
Enclosed: Yes
Contiguous: Yes
Permitted: Yes
Wet space: No
Addition: No
Conversion: No

17 Floor 1 - Pantry

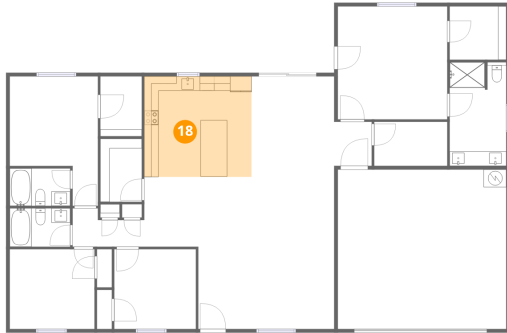


Dimensions: 5'9" x 8'9"
Area: 50 sq. ft
Counted as living area: Yes

Heated: Yes
Finished: Yes
Enclosed: Yes
Contiguous: Yes
Permitted: Yes
Wet space: No
Addition: No
Conversion: No

46210 N 36th Ave, New River, Maricopa County, Arizona, United States, 85087

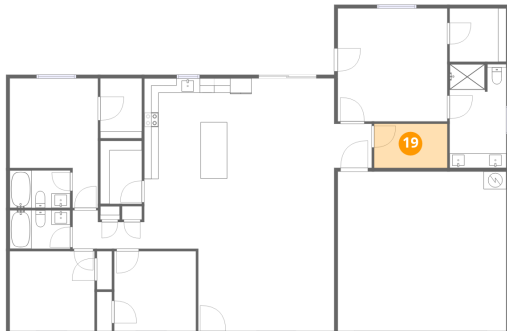
18 Floor 1 - Kitchen



Dimensions: 14'10" x 13'11"
Area: 206 sq. ft
Counted as living area: Yes

Heated: Yes
Finished: Yes
Enclosed: Yes
Contiguous: Yes
Permitted: Yes
Wet space: No
Addition: No
Conversion: No

19 Floor 1 - Laundry



Dimensions: 10'1" x 6'1"
Area: 62 sq. ft
Counted as living area: Yes

Heated: Yes
Finished: Yes
Enclosed: Yes
Contiguous: Yes
Permitted: Yes
Wet space: No
Addition: No
Conversion: No