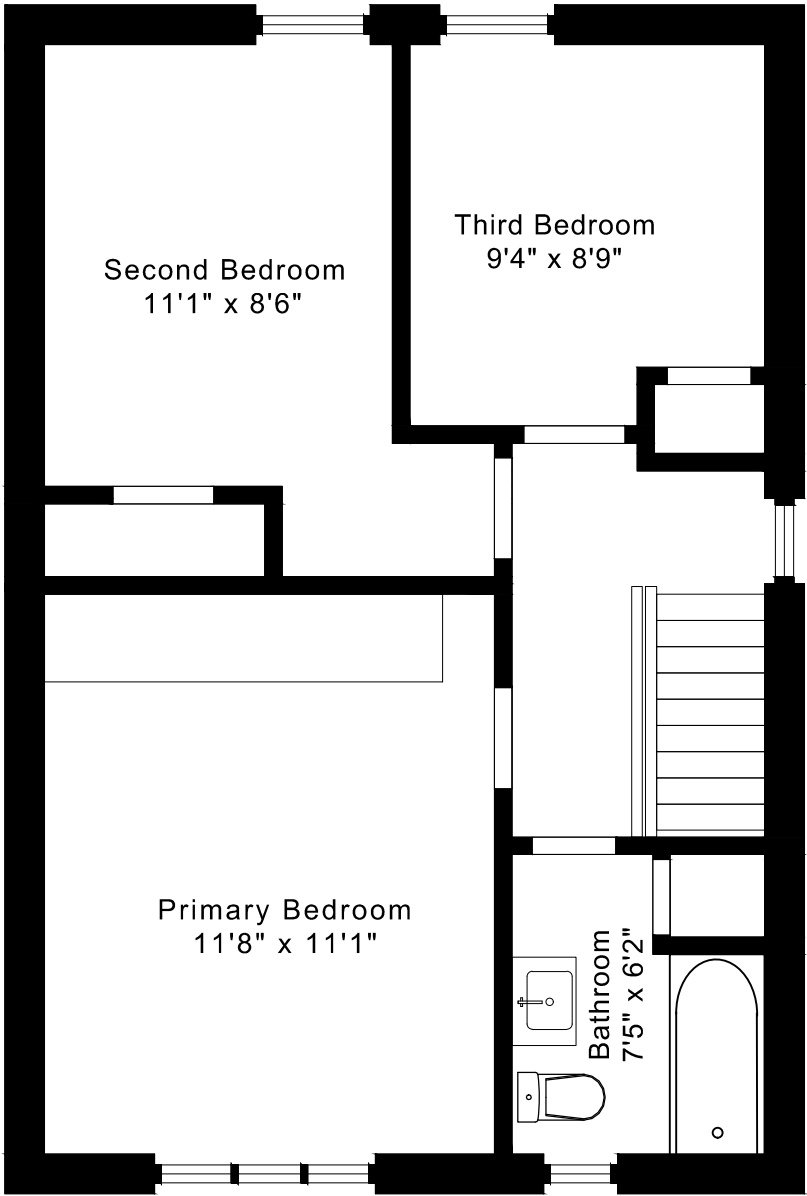
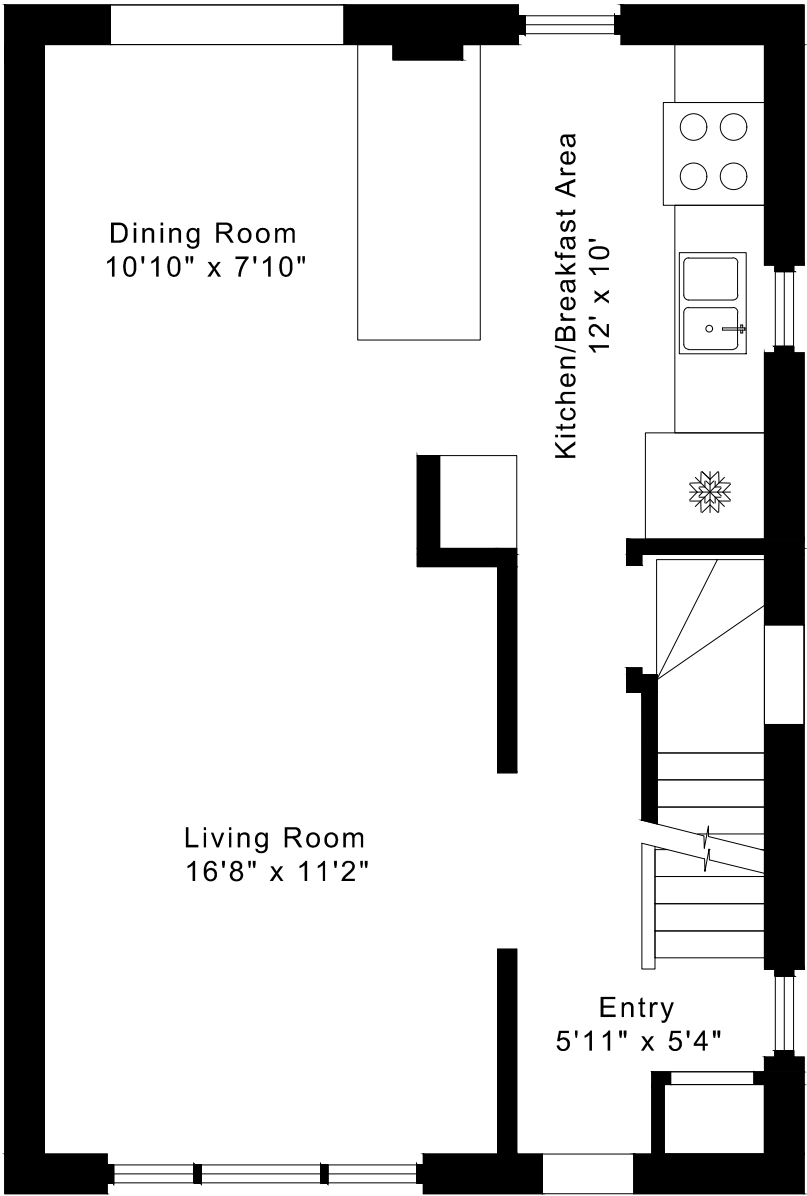


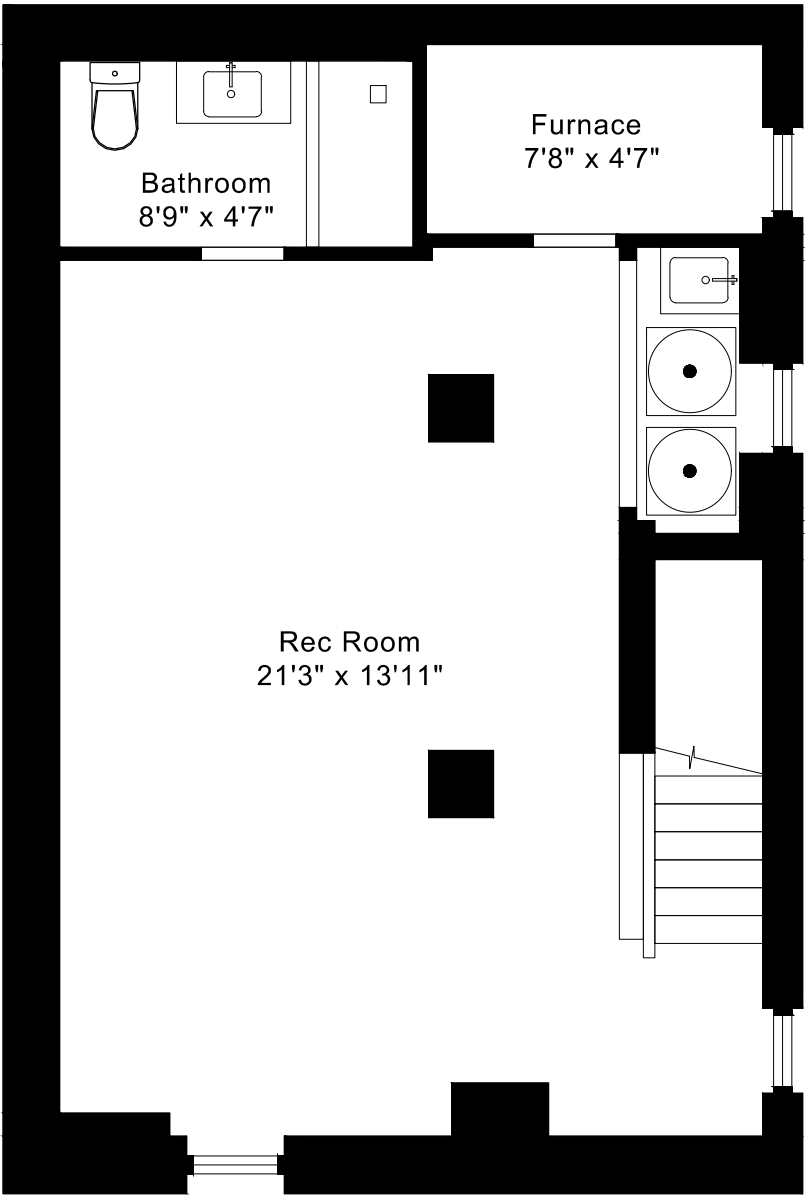
19 THURSFIELD CRESCENT
FLOOR PLANS



MAIN FLOOR
580 SQUARE FEET



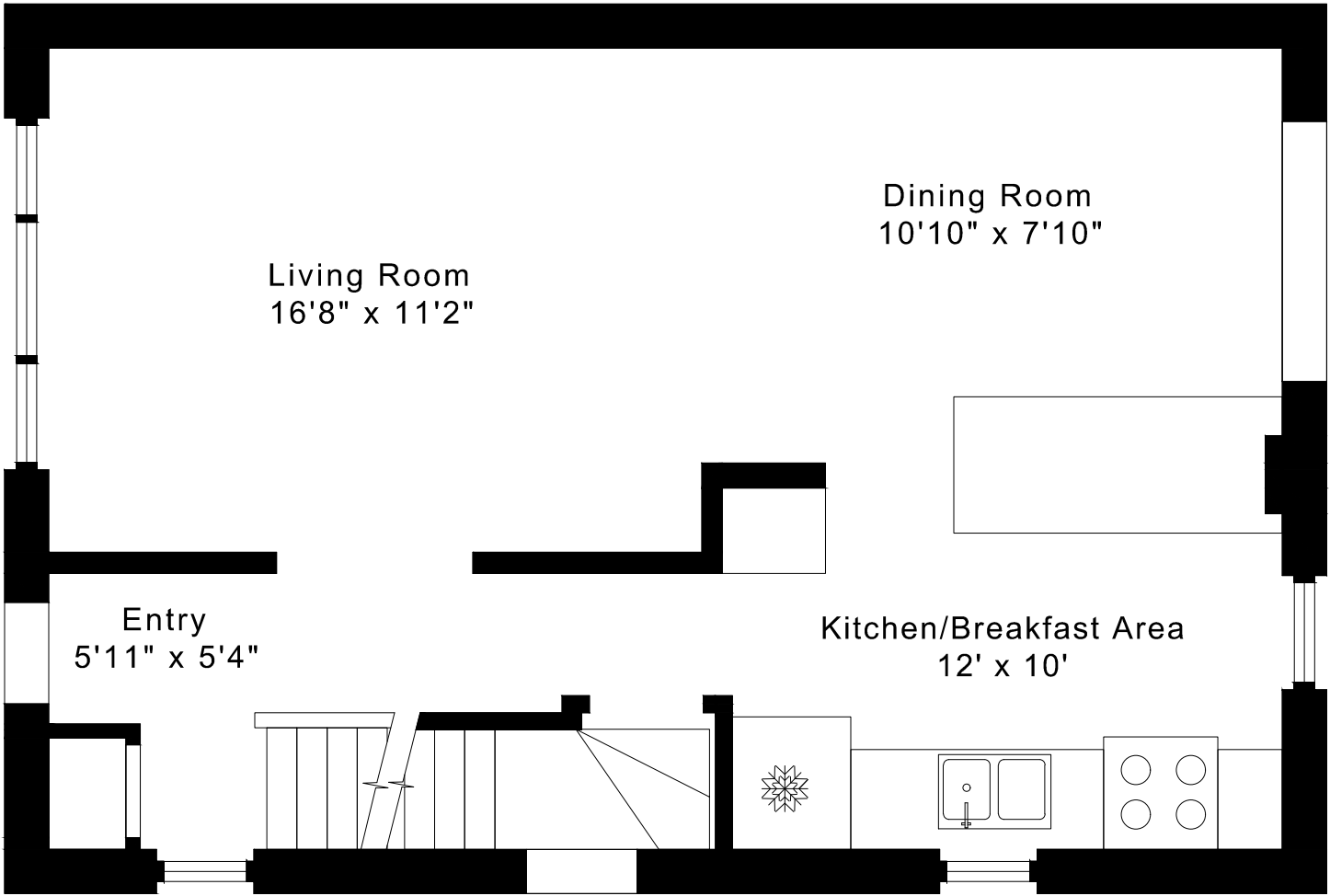
SECOND FLOOR
580 SQUARE FEET



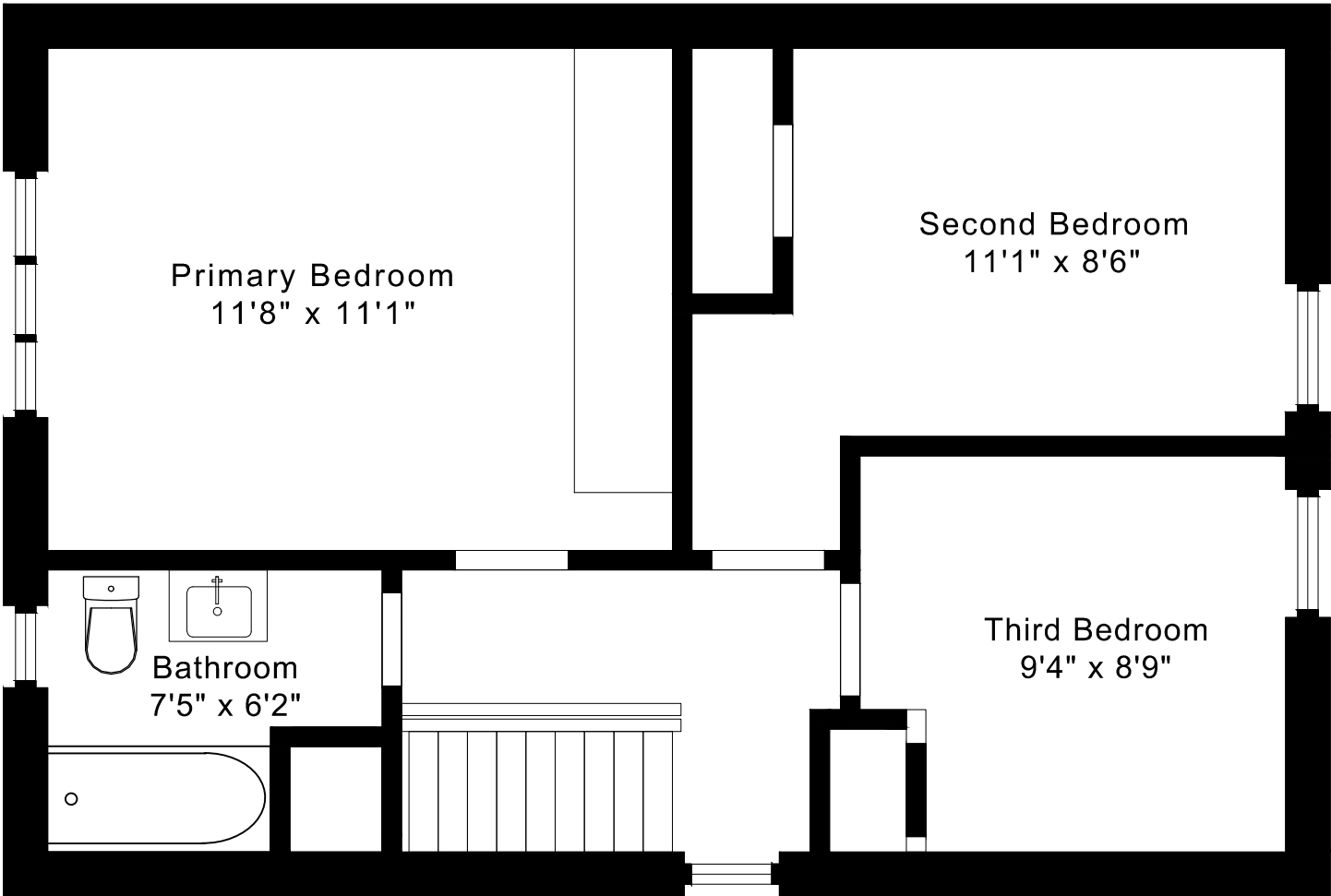
LOWER FLOOR
580 SQUARE FEET

19 THURSFIELD CRESCENT FLOOR PLANS

MAIN FLOOR 580 SQUARE FEET

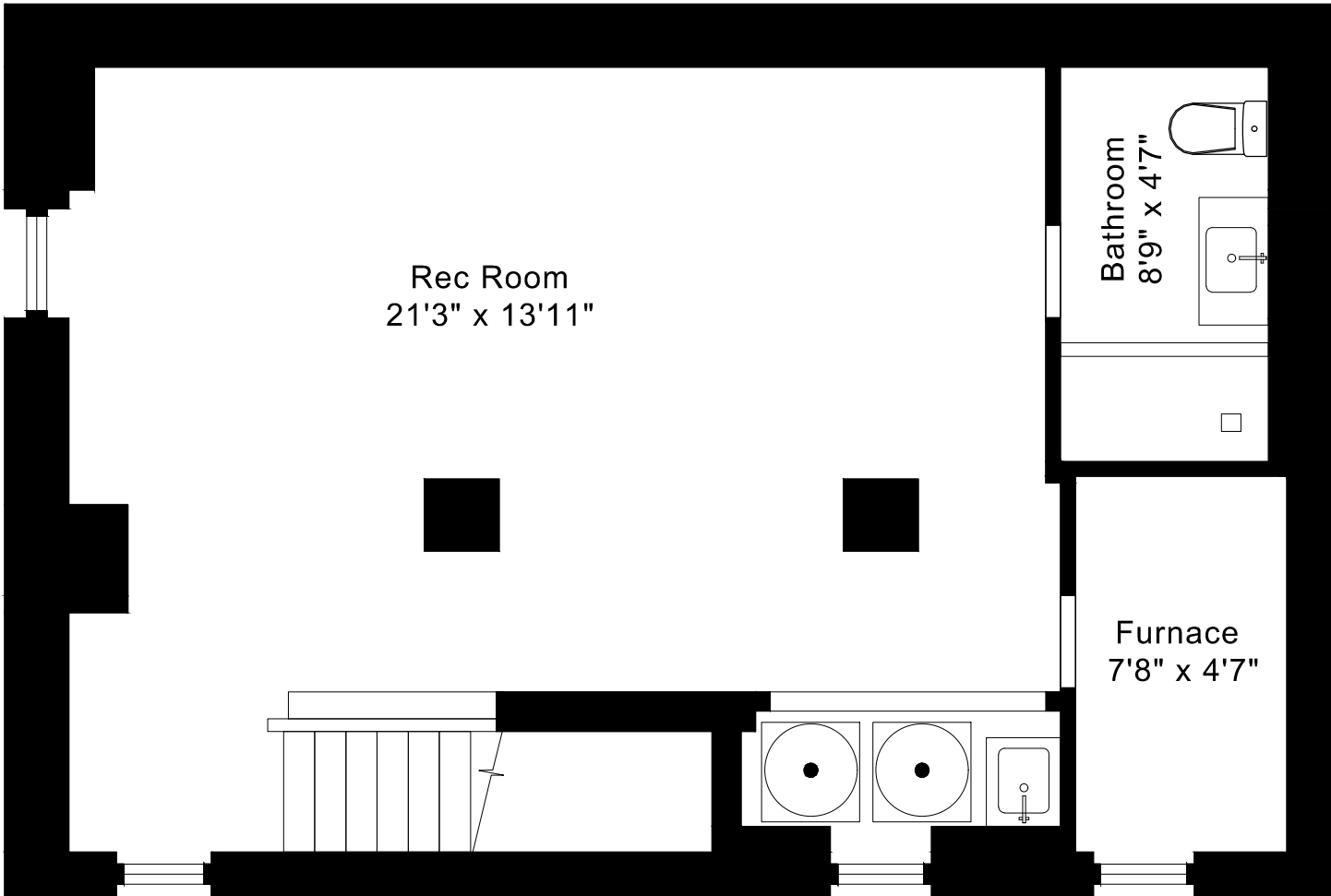


19 THURSFIELD CRESCENT
FLOOR PLANS
SECOND FLOOR 580 SQUARE FEET



19 THURSFIELD CRESCENT
FLOOR PLANS

LOWER FLOOR 580 SQUARE FEET



19 THURSTFIELD CRESCENT ROOM MEASUREMENTS

Floor	Room	Imperial						Metric [m]		
		Length		Width		Height		Length	Width	Height
		Feet	Inches	Feet	Inches	Feet	Inches			
Second	Primary Bedroom	11	8	11	1	8	0	3,56	3,38	2,44
	Second Bedroom	11	1	8	6	8	0	3,38	2,59	2,44
	Third Bedroom	9	4	8	9	8	0	2,84	2,67	2,44
	Bathroom	7	5	6	2	8	0	2,26	1,88	2,44
Main	Entry	5	11	5	4	7	11	1,80	1,63	2,41
	Living Room	16	8	11	2	7	11	5,08	3,40	2,41
	Dining Room	10	10	7	10	7	11	3,30	2,39	2,41
	Kitchen/Breakfast Area	12	0	10	0	7	11	3,66	3,05	2,41
Lower	Rec Room	21	3	13	11	6	6	6,48	4,24	1,98
	Bathroom	8	9	4	7	6	2	2,67	1,40	1,88
	Furnace	7	8	4	7	6	6	2,34	1,40	1,98

CAPTURED ON: 18 FEB 2026
DIMENSIONS ARE APPROXIMATE AND SHOULD BE CONSIDERED
ILLUSTRATIVE ONLY.

1160 sq ft + 580 sq ft
BELOW GRADE

The following is a disclaimer regarding the approximate nature of dimensions and floor areas listed in this document:

Disclaimer:

The dimensions and floor areas listed in this document are provided as an estimate only and are intended to be used for illustration purposes only. These measurements are not necessarily meant to be a perfect representation of the actual space.

Notes regarding measurement methods and accuracy:

The utilization of laser measurement technology during the 3D model capturing process at the location provides an accurate representation of floor plans, with a typical margin of error of 3-5%. For the most accurate and official measurement data, it is advised to consult official documents such as MPAC records, builder's pre-construction plans, or data from certified measurement companies.

Exterior wall thickness is included in the calculation of the overall square footage and is considered as a component of the footprint. The wall thickness measurement is obtained onsite whenever possible, or estimated in the event where obtaining onsite measurements is not possible, such as in the case of condominium buildings where wall thickness may vary throughout the building.