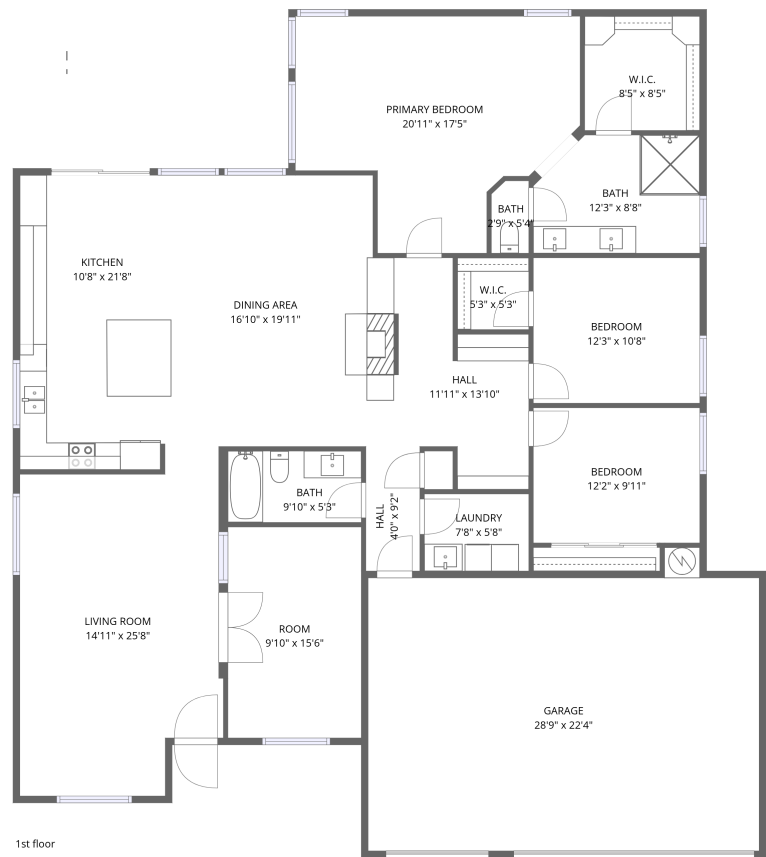


Home data report

16290 North 105th Way, McDowell Mountain Ranch, Scottsdale,  
Maricopa County, Arizona, United States, 85255



Total Area: 2148 sq. ft

1st Floor: 2148 sq. ft

Excluded: Garage 582 sq. ft, Walls: 140 sq. ft

Property summary

 **1** Floors

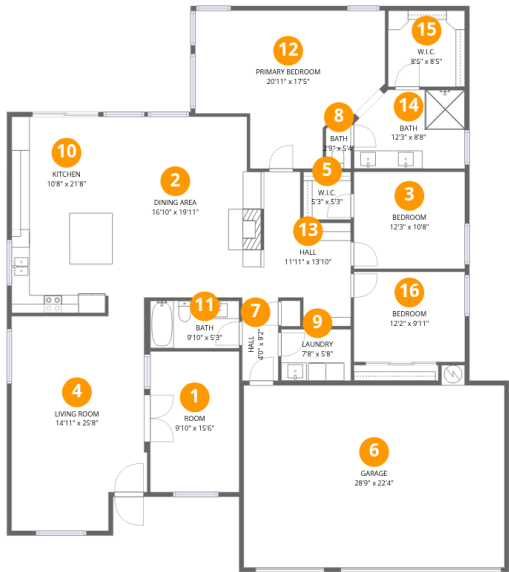
 **3** Bedrooms

 **2** Bathrooms

 **1** Garages

Home data report

16290 North 105th Way, McDowell Mountain Ranch, Scottsdale,  
Maricopa County, Arizona, United States, 85255



Room dimensions

Floor 1

Total:2148sqft    Excluded: 582sqft

#		Dimensions	sqft	Counted as living area
1	Room	9'10" x 15'6"	152 sq. ft	Yes
2	Dining Area	16'10" x 19'11"	336 sq. ft	Yes
3	Bedroom	12'3" x 10'8"	131 sq. ft	Yes
4	Living Room	14'11" x 25'8"	384 sq. ft	Yes
5	W.I.C.	5'3" x 5'3"	28 sq. ft	Yes
6	Garage	28'9" x 22'4"	641 sq. ft	No
7	Hall	4'0" x 9'2"	36 sq. ft	Yes
8	Bath	2'9" x 5'4"	15 sq. ft	Yes
9	Laundry	7'8" x 5'8"	43 sq. ft	Yes
10	Kitchen	10'8" x 21'8"	230 sq. ft	Yes
11	Bath	9'10" x 5'3"	51 sq. ft	Yes

## Home data report

**16290 North 105th Way, McDowell Mountain Ranch, Scottsdale,  
Maricopa County, Arizona, United States, 85255**

#		Dimensions	sqft	Counted as living area
12	Primary Bedroom	20'11" x 17'5"	364 sq. ft	Yes
13	Hall	11'11" x 13'10"	166 sq. ft	Yes
14	Bath	12'3" x 8'8"	106 sq. ft	Yes
15	W.I.C.	8'5" x 8'5"	71 sq. ft	Yes
16	Bedroom	12'2" x 9'11"	121 sq. ft	Yes

1 Floor 1 - Room



Dimensions: 9'10" x 15'6"  
Area: 152 sq. ft  
Counted as living area: Yes

Heated: Yes  
Finished: Yes  
Enclosed: Yes  
Contiguous: Yes  
Permitted: Yes  
Wet space: No  
Addition: No  
Conversion: No

2 Floor 1 - Dining Area



Dimensions: 16'10" x 19'11"  
Area: 336 sq. ft  
Counted as living area: Yes

Heated: Yes  
Finished: Yes  
Enclosed: Yes  
Contiguous: Yes  
Permitted: Yes  
Wet space: No  
Addition: No  
Conversion: No

## Home data report

16290 North 105th Way, McDowell Mountain Ranch, Scottsdale,  
Maricopa County, Arizona, United States, 85255

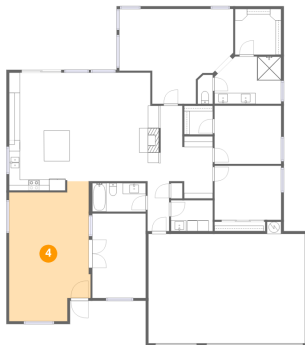
### 3 Floor 1 - Bedroom



Dimensions: 12'3" x 10'8"  
Area: 131 sq. ft  
Counted as living area: Yes

Heated: Yes  
Finished: Yes  
Enclosed: Yes  
Contiguous: Yes  
Permitted: Yes  
Wet space: No  
Addition: No  
Conversion: No

### 4 Floor 1 - Living Room



Dimensions: 14'11" x 25'8"  
Area: 384 sq. ft  
Counted as living area: Yes

Heated: Yes  
Finished: Yes  
Enclosed: Yes  
Contiguous: Yes  
Permitted: Yes  
Wet space: No  
Addition: No  
Conversion: No

### 5 Floor 1 - W.I.C.



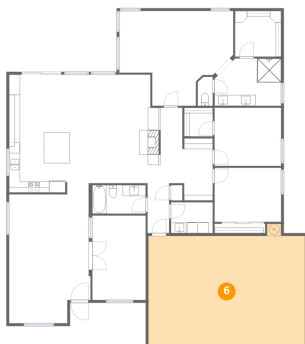
Dimensions: 5'3" x 5'3"  
Area: 28 sq. ft  
Counted as living area: Yes

Heated: Yes  
Finished: Yes  
Enclosed: Yes  
Contiguous: Yes  
Permitted: Yes  
Wet space: No  
Addition: No  
Conversion: No

## Home data report

16290 North 105th Way, McDowell Mountain Ranch, Scottsdale,  
Maricopa County, Arizona, United States, 85255

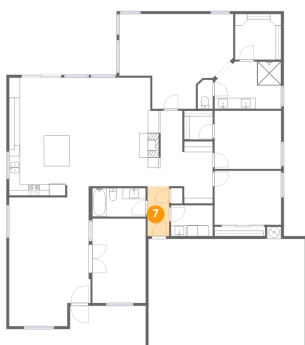
### 6 Floor 1 - Garage



Dimensions: 28'9" x 22'4"  
Area: 641 sq. ft  
Counted as living area: No

Heated: No  
Finished: No  
Enclosed: Yes  
Contiguous: Yes  
Permitted: Yes  
Wet space: No  
Addition: No  
Conversion: No

### 7 Floor 1 - Hall



Dimensions: 4'0" x 9'2"  
Area: 36 sq. ft  
Counted as living area: Yes

Heated: Yes  
Finished: Yes  
Enclosed: Yes  
Contiguous: Yes  
Permitted: Yes  
Wet space: No  
Addition: No  
Conversion: No

### 8 Floor 1 - Bath



Dimensions: 2'9" x 5'4"  
Area: 15 sq. ft  
Counted as living area: Yes

Heated: Yes  
Finished: Yes  
Enclosed: Yes  
Contiguous: Yes  
Permitted: Yes  
Wet space: Yes  
Addition: No  
Conversion: No

## Home data report

16290 North 105th Way, McDowell Mountain Ranch, Scottsdale,  
Maricopa County, Arizona, United States, 85255

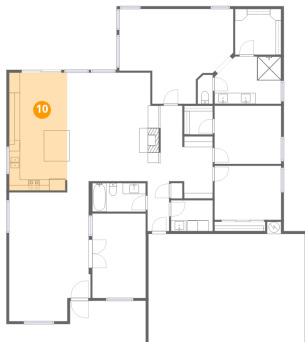
### 9 Floor 1 - Laundry



Dimensions: 7'8" x 5'8"  
Area: 43 sq. ft  
Counted as living area: Yes

Heated: Yes  
Finished: Yes  
Enclosed: Yes  
Contiguous: Yes  
Permitted: Yes  
Wet space: No  
Addition: No  
Conversion: No

### 10 Floor 1 - Kitchen



Dimensions: 10'8" x 21'8"  
Area: 230 sq. ft  
Counted as living area: Yes

Heated: Yes  
Finished: Yes  
Enclosed: Yes  
Contiguous: Yes  
Permitted: Yes  
Wet space: No  
Addition: No  
Conversion: No

### 11 Floor 1 - Bath



Dimensions: 9'10" x 5'3"  
Area: 51 sq. ft  
Counted as living area: Yes

Heated: Yes  
Finished: Yes  
Enclosed: Yes  
Contiguous: Yes  
Permitted: Yes  
Wet space: Yes  
Addition: No  
Conversion: No

## Home data report

16290 North 105th Way, McDowell Mountain Ranch, Scottsdale,  
Maricopa County, Arizona, United States, 85255

### 12 Floor 1 - Primary Bedroom

---

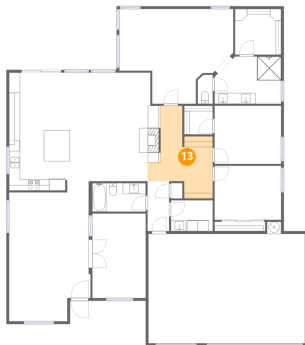


Dimensions: 20'11" x 17'5"  
Area: 364 sq. ft  
Counted as living area: Yes

Heated: Yes  
Finished: Yes  
Enclosed: Yes  
Contiguous: Yes  
Permitted: Yes  
Wet space: No  
Addition: No  
Conversion: No

### 13 Floor 1 - Hall

---

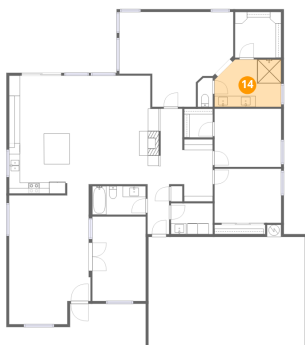


Dimensions: 11'11" x 13'10"  
Area: 166 sq. ft  
Counted as living area: Yes

Heated: Yes  
Finished: Yes  
Enclosed: Yes  
Contiguous: Yes  
Permitted: Yes  
Wet space: No  
Addition: No  
Conversion: No

### 14 Floor 1 - Bath

---



Dimensions: 12'3" x 8'8"  
Area: 106 sq. ft  
Counted as living area: Yes

Heated: Yes  
Finished: Yes  
Enclosed: Yes  
Contiguous: Yes  
Permitted: Yes  
Wet space: Yes  
Addition: No  
Conversion: No



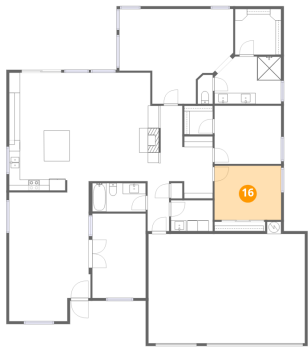
15 Floor 1 - W.I.C.



Dimensions: 8'5" x 8'5"  
Area: 71 sq. ft  
Counted as living area: Yes

Heated: Yes  
Finished: Yes  
Enclosed: Yes  
Contiguous: Yes  
Permitted: Yes  
Wet space: No  
Addition: No  
Conversion: No

16 Floor 1 - Bedroom



Dimensions: 12'2" x 9'11"  
Area: 121 sq. ft  
Counted as living area: Yes

Heated: Yes  
Finished: Yes  
Enclosed: Yes  
Contiguous: Yes  
Permitted: Yes  
Wet space: No  
Addition: No  
Conversion: No