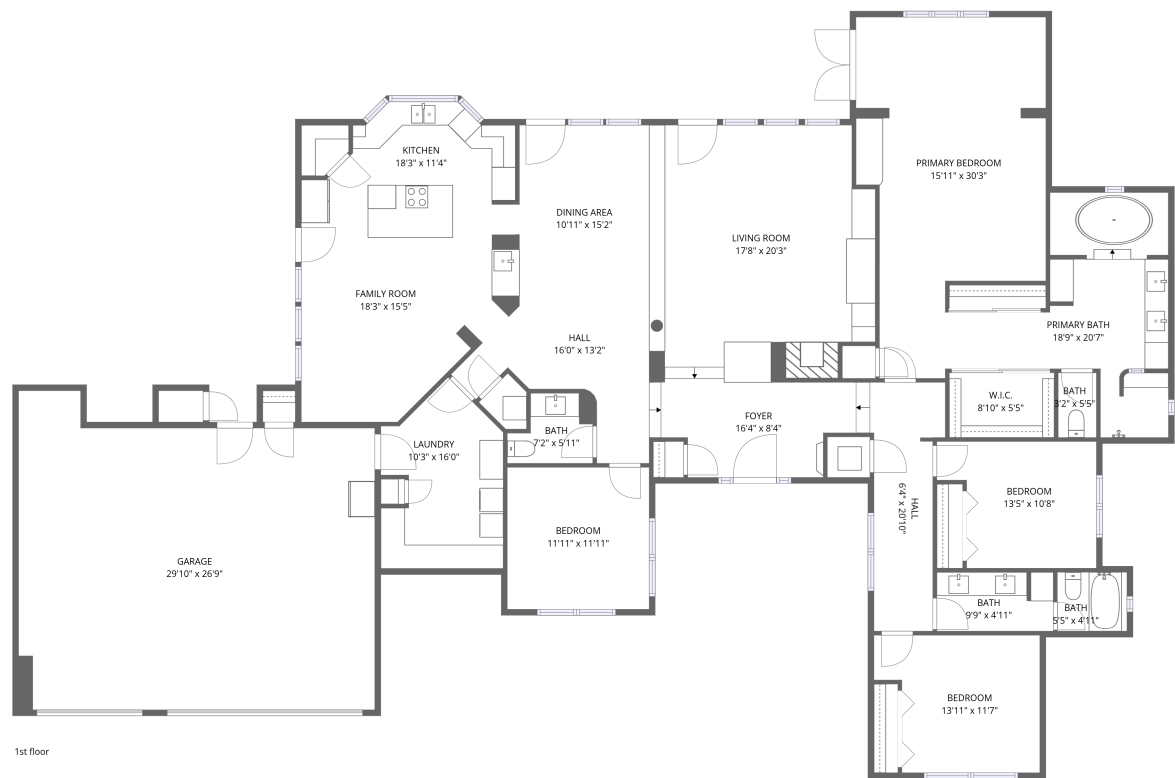


Home data report

25018 North Paso Trail, Pinnacle Peak, Scottsdale, Maricopa County, Arizona, United States, 85255




Total Area: 2830 sq. ft


1st Floor: 2830 sq. ft

Excluded: Garage 730 sq. ft, Undefined 10 sq. ft, Walls: 206 sq. ft

Property summary

 1 Floors

 4 Bedrooms

 2 Bathrooms

Home data report

**25018 North Paso Trail, Pinnacle Peak, Scottsdale, Maricopa County, Arizona, United States, 85255**



**1**  
Half baths



**1**  
Garages

Home data report

25018 North Paso Trail, Pinnacle Peak, Scottsdale, Maricopa County, Arizona, United States, 85255



Room dimensions

Floor 1

Total:2830sqft    Excluded: 740sqft

#		Dimensions	sqft	Counted as living area
1	Laundry	10'3" x 16'0"	164 sq. ft	Yes
2	Bath	7'2" x 5'11"	42 sq. ft	Yes
3	Dining Area	10'11" x 15'2"	165 sq. ft	Yes
4	Bedroom	13'11" x 11'7"	161 sq. ft	Yes
5	Bath	5'5" x 4'11"	27 sq. ft	Yes
6	Bedroom	11'11" x 11'11"	142 sq. ft	Yes
7	Living Room	17'8" x 20'3"	358 sq. ft	Yes
8	Family Room	18'3" x 15'5"	282 sq. ft	Yes
9	Bath	9'9" x 4'11"	48 sq. ft	Yes
10	W.I.C.	8'10" x 5'5"	48 sq. ft	Yes
11	Primary Bedroom	15'11" x 30'3"	481 sq. ft	Yes

## Home data report

# 25018 North Paso Trail, Pinnacle Peak, Scottsdale, Maricopa County, Arizona, United States, 85255

#		Dimensions	sqft	Counted as living area
12	Bedroom	13'5" x 10'8"	142 sq. ft	Yes
13	Hall	6'4" x 20'10"	132 sq. ft	Yes
14	Hall	16'0" x 13'2"	211 sq. ft	Yes
15	Primary Bath	18'9" x 20'7"	385 sq. ft	Yes
16	Kitchen	18'3" x 11'4"	208 sq. ft	Yes
17	Foyer	16'4" x 8'4"	136 sq. ft	Yes
18	Garage	29'10" x 26'9"	799 sq. ft	No
19	Bath	3'2" x 5'5"	17 sq. ft	Yes

**25018 North Paso Trail, Pinnacle Peak, Scottsdale, Maricopa County, Arizona, United States, 85255**

**1 Floor 1 - Laundry**

---



Dimensions: 10'3" x 16'0"  
Area: 164 sq. ft  
Counted as living area: Yes

Heated: Yes  
Finished: Yes  
Enclosed: Yes  
Contiguous: Yes  
Permitted: Yes  
Wet space: No  
Addition: No  
Conversion: No

**2 Floor 1 - Bath**

---

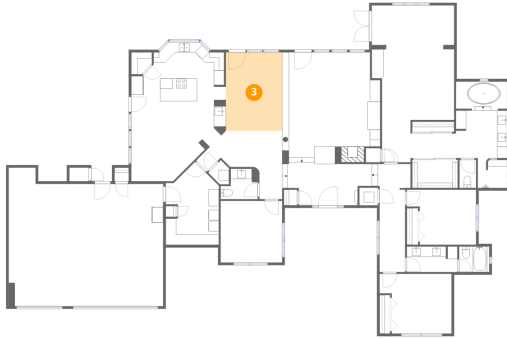


Dimensions: 7'2" x 5'11"  
Area: 42 sq. ft  
Counted as living area: Yes

Heated: Yes  
Finished: Yes  
Enclosed: Yes  
Contiguous: Yes  
Permitted: Yes  
Wet space: Yes  
Addition: No  
Conversion: No

25018 North Paso Trail, Pinnacle Peak, Scottsdale, Maricopa County, Arizona, United States, 85255

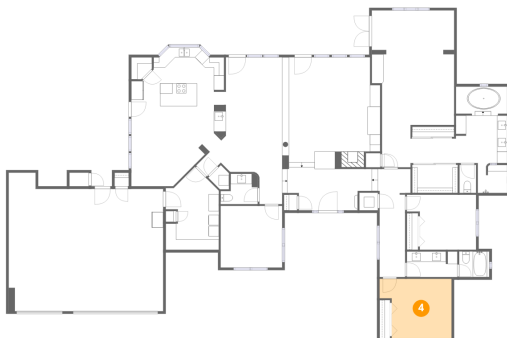
### 3 Floor 1 - Dining Area



Dimensions: 10'11" x 15'2"  
Area: 165 sq. ft  
Counted as living area: Yes

Heated: Yes  
Finished: Yes  
Enclosed: Yes  
Contiguous: Yes  
Permitted: Yes  
Wet space: No  
Addition: No  
Conversion: No

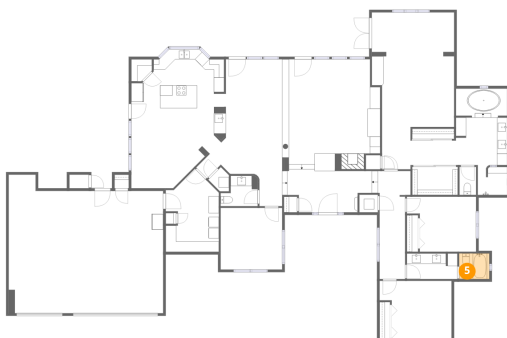
### 4 Floor 1 - Bedroom



Dimensions: 13'11" x 11'7"  
Area: 161 sq. ft  
Counted as living area: Yes

Heated: Yes  
Finished: Yes  
Enclosed: Yes  
Contiguous: Yes  
Permitted: Yes  
Wet space: No  
Addition: No  
Conversion: No

### 5 Floor 1 - Bath

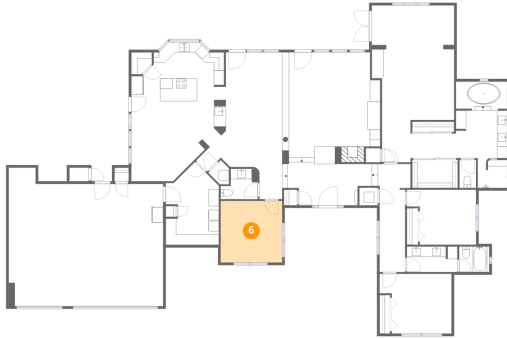


Dimensions: 5'5" x 4'11"  
Area: 27 sq. ft  
Counted as living area: Yes

Heated: Yes  
Finished: Yes  
Enclosed: Yes  
Contiguous: Yes  
Permitted: Yes  
Wet space: Yes  
Addition: No  
Conversion: No

25018 North Paso Trail, Pinnacle Peak, Scottsdale, Maricopa County, Arizona, United States, 85255

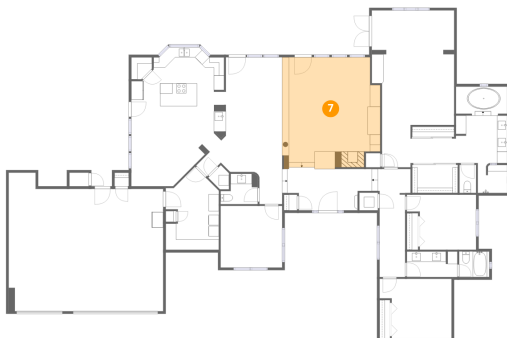
6 Floor 1 - Bedroom



Dimensions: 11'11" x 11'11"  
Area: 142 sq. ft  
Counted as living area: Yes

Heated: Yes  
Finished: Yes  
Enclosed: Yes  
Contiguous: Yes  
Permitted: Yes  
Wet space: No  
Addition: No  
Conversion: No

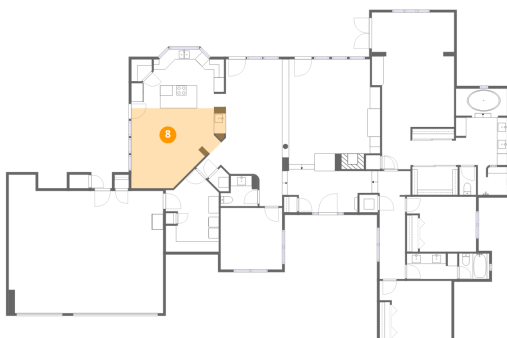
7 Floor 1 - Living Room



Dimensions: 17'8" x 20'3"  
Area: 358 sq. ft  
Counted as living area: Yes

Heated: Yes  
Finished: Yes  
Enclosed: Yes  
Contiguous: Yes  
Permitted: Yes  
Wet space: No  
Addition: No  
Conversion: No

8 Floor 1 - Family Room



Dimensions: 18'3" x 15'5"  
Area: 282 sq. ft  
Counted as living area: Yes

Heated: Yes  
Finished: Yes  
Enclosed: Yes  
Contiguous: Yes  
Permitted: Yes  
Wet space: No  
Addition: No  
Conversion: No

25018 North Paso Trail, Pinnacle Peak, Scottsdale, Maricopa County, Arizona, United States, 85255

9 Floor 1 - Bath



Dimensions: 9'9" x 4'11"  
Area: 48 sq. ft  
Counted as living area: Yes

Heated: Yes  
Finished: Yes  
Enclosed: Yes  
Contiguous: Yes  
Permitted: Yes  
Wet space: Yes  
Addition: No  
Conversion: No

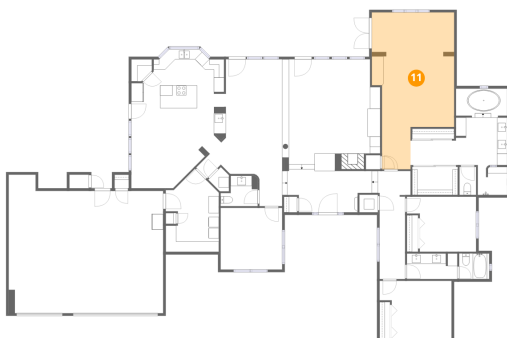
10 Floor 1 - W.I.C.



Dimensions: 8'10" x 5'5"  
Area: 48 sq. ft  
Counted as living area: Yes

Heated: Yes  
Finished: Yes  
Enclosed: Yes  
Contiguous: Yes  
Permitted: Yes  
Wet space: No  
Addition: No  
Conversion: No

11 Floor 1 - Primary Bedroom



Dimensions: 15'11" x 30'3"  
Area: 481 sq. ft  
Counted as living area: Yes

Heated: Yes  
Finished: Yes  
Enclosed: Yes  
Contiguous: Yes  
Permitted: Yes  
Wet space: No  
Addition: No  
Conversion: No



25018 North Paso Trail, Pinnacle Peak, Scottsdale, Maricopa County, Arizona, United States, 85255

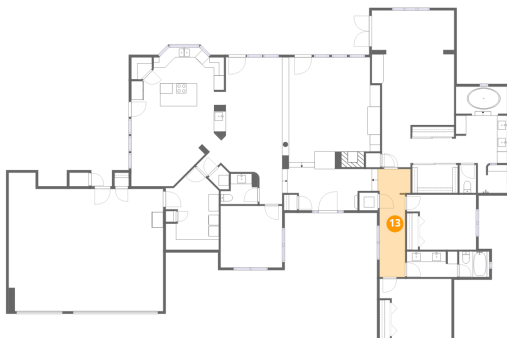
**12** Floor 1 - Bedroom



Dimensions: 13'5" x 10'8"  
Area: 142 sq. ft  
Counted as living area: Yes

Heated: Yes  
Finished: Yes  
Enclosed: Yes  
Contiguous: Yes  
Permitted: Yes  
Wet space: No  
Addition: No  
Conversion: No

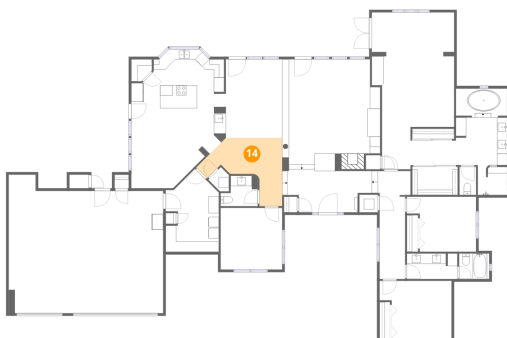
**13** Floor 1 - Hall



Dimensions: 6'4" x 20'10"  
Area: 132 sq. ft  
Counted as living area: Yes

Heated: Yes  
Finished: Yes  
Enclosed: Yes  
Contiguous: Yes  
Permitted: Yes  
Wet space: No  
Addition: No  
Conversion: No

**14** Floor 1 - Hall



Dimensions: 16'0" x 13'2"  
Area: 211 sq. ft  
Counted as living area: Yes

Heated: Yes  
Finished: Yes  
Enclosed: Yes  
Contiguous: Yes  
Permitted: Yes  
Wet space: No  
Addition: No  
Conversion: No

25018 North Paso Trail, Pinnacle Peak, Scottsdale, Maricopa County, Arizona, United States, 85255

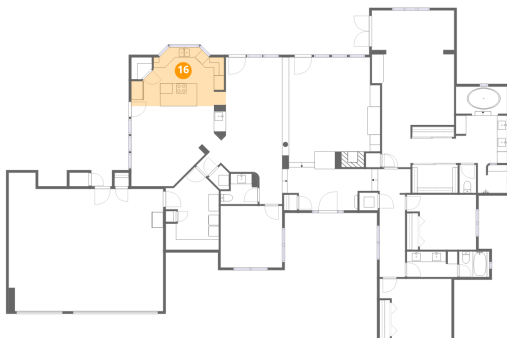
**15** Floor 1 - Primary Bath



Dimensions: 18'9" x 20'7"  
Area: 385 sq. ft  
Counted as living area: Yes

Heated: Yes  
Finished: Yes  
Enclosed: Yes  
Contiguous: Yes  
Permitted: Yes  
Wet space: Yes  
Addition: No  
Conversion: No

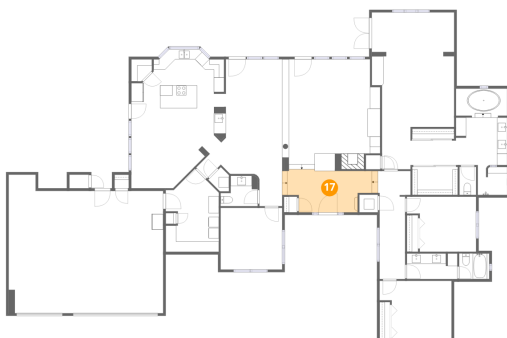
**16** Floor 1 - Kitchen



Dimensions: 18'3" x 11'4"  
Area: 208 sq. ft  
Counted as living area: Yes

Heated: Yes  
Finished: Yes  
Enclosed: Yes  
Contiguous: Yes  
Permitted: Yes  
Wet space: No  
Addition: No  
Conversion: No

**17** Floor 1 - Foyer



Dimensions: 16'4" x 8'4"  
Area: 136 sq. ft  
Counted as living area: Yes

Heated: Yes  
Finished: Yes  
Enclosed: Yes  
Contiguous: Yes  
Permitted: Yes  
Wet space: No  
Addition: No  
Conversion: No

25018 North Paso Trail, Pinnacle Peak, Scottsdale, Maricopa County, Arizona, United States, 85255

**18** Floor 1 - Garage

---

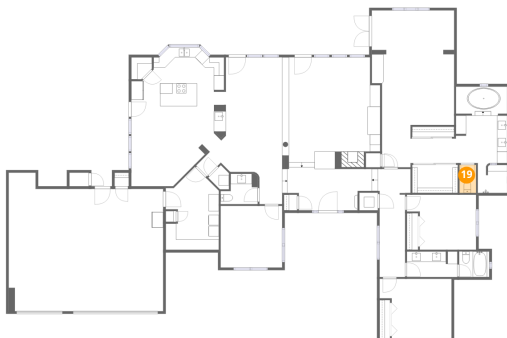


Dimensions: 29'10" x 26'9"  
Area: 799 sq. ft  
Counted as living area: No

Heated: No  
Finished: No  
Enclosed: Yes  
Contiguous: Yes  
Permitted: Yes  
Wet space: No  
Addition: No  
Conversion: No

**19** Floor 1 - Bath

---



Dimensions: 3'2" x 5'5"  
Area: 17 sq. ft  
Counted as living area: Yes

Heated: Yes  
Finished: Yes  
Enclosed: Yes  
Contiguous: Yes  
Permitted: Yes  
Wet space: Yes  
Addition: No  
Conversion: No