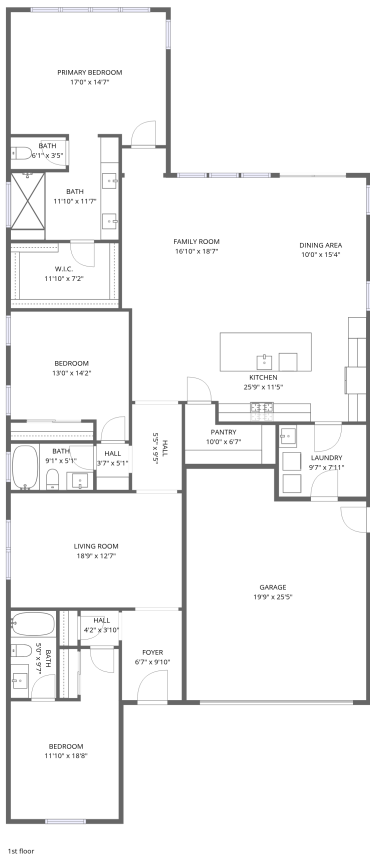


Home data report

6875 West Spur Drive, Mesquite, Peoria, Maricopa County,
Arizona, United States, 85383




Total Area: 2214 sq. ft

1st Floor: 2214 sq. ft

Excluded: Garage 466 sq. ft, Walls: 153 sq. ft

Property summary

 1 Floors

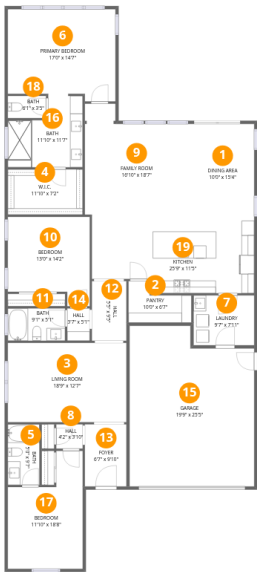
 3 Bedrooms

 3 Bathrooms

 1 Garages

Home data report

6875 West Spur Drive, Mesquite, Peoria, Maricopa County,
Arizona, United States, 85383



Room dimensions

Floor 1 Total:2214sqft Excluded: 466sqft

#		Dimensions	sqft	Counted as living area
1	Dining Area	10'0" x 15'4"	153 sq. ft	Yes
2	Pantry	10'0" x 6'7"	66 sq. ft	Yes
3	Living Room	18'9" x 12'7"	236 sq. ft	Yes
4	W.I.C.	11'10" x 7'2"	85 sq. ft	Yes
5	Bath	5'0" x 9'7"	48 sq. ft	Yes
6	Primary Bedroom	17'0" x 14'7"	248 sq. ft	Yes
7	Laundry	9'7" x 7'11"	76 sq. ft	Yes
8	Hall	4'2" x 3'10"	16 sq. ft	Yes
9	Family Room	16'10" x 18'7"	312 sq. ft	Yes
10	Bedroom	13'0" x 14'2"	184 sq. ft	Yes
11	Bath	9'1" x 5'1"	46 sq. ft	Yes

Home data report

**6875 West Spur Drive, Mesquite, Peoria, Maricopa County,
Arizona, United States, 85383**

#		Dimensions	sqft	Counted as living area
12	Hall	5'5" x 9'5"	51 sq. ft	Yes
13	Foyer	6'7" x 9'10"	65 sq. ft	Yes
14	Hall	3'7" x 5'1"	18 sq. ft	Yes
15	Garage	19'9" x 25'5"	501 sq. ft	No
16	Bath	11'10" x 11'7"	137 sq. ft	Yes
17	Bedroom	11'10" x 18'8"	221 sq. ft	Yes
18	Bath	6'1" x 3'5"	21 sq. ft	Yes
19	Kitchen	25'9" x 11'5"	294 sq. ft	Yes

1 Floor 1 - Dining Area



Dimensions: 10'0" x 15'4"
Area: 153 sq. ft
Counted as living area: Yes

Heated: Yes
Finished: Yes
Enclosed: Yes
Contiguous: Yes
Permitted: Yes
Wet space: No
Addition: No
Conversion: No

2 Floor 1 - Pantry



Dimensions: 10'0" x 6'7"
Area: 66 sq. ft
Counted as living area: Yes

Heated: Yes
Finished: Yes
Enclosed: Yes
Contiguous: Yes
Permitted: Yes
Wet space: No
Addition: No
Conversion: No

3 Floor 1 - Living Room



Dimensions: 18'9" x 12'7"
Area: 236 sq. ft
Counted as living area: Yes

Heated: Yes
Finished: Yes
Enclosed: Yes
Contiguous: Yes
Permitted: Yes
Wet space: No
Addition: No
Conversion: No

4 Floor 1 - W.I.C.



Dimensions: 11'10" x 7'2"
Area: 85 sq. ft
Counted as living area: Yes

Heated: Yes
Finished: Yes
Enclosed: Yes
Contiguous: Yes
Permitted: Yes
Wet space: No
Addition: No
Conversion: No

5 Floor 1 - Bath



Dimensions: 5'0" x 9'7"
Area: 48 sq. ft
Counted as living area: Yes

Heated: Yes
Finished: Yes
Enclosed: Yes
Contiguous: Yes
Permitted: Yes
Wet space: Yes
Addition: No
Conversion: No

6 Floor 1 - Primary Bedroom



Dimensions: 17'0" x 14'7"
Area: 248 sq. ft
Counted as living area: Yes

Heated: Yes
Finished: Yes
Enclosed: Yes
Contiguous: Yes
Permitted: Yes
Wet space: No
Addition: No
Conversion: No

7 Floor 1 - Laundry



Dimensions: 9'7" x 7'11"
Area: 76 sq. ft
Counted as living area: Yes

Heated: Yes
Finished: Yes
Enclosed: Yes
Contiguous: Yes
Permitted: Yes
Wet space: No
Addition: No
Conversion: No

8 Floor 1 - Hall



Dimensions: 4'2" x 3'10"
Area: 16 sq. ft
Counted as living area: Yes

Heated: Yes
Finished: Yes
Enclosed: Yes
Contiguous: Yes
Permitted: Yes
Wet space: No
Addition: No
Conversion: No

9 Floor 1 - Family Room



Dimensions: 16'10" x 18'7"
Area: 312 sq. ft
Counted as living area: Yes

Heated: Yes
Finished: Yes
Enclosed: Yes
Contiguous: Yes
Permitted: Yes
Wet space: No
Addition: No
Conversion: No

10 Floor 1 - Bedroom



Dimensions: 13'0" x 14'2"
Area: 184 sq. ft
Counted as living area: Yes

Heated: Yes
Finished: Yes
Enclosed: Yes
Contiguous: Yes
Permitted: Yes
Wet space: No
Addition: No
Conversion: No

11 Floor 1 - Bath



Dimensions: 9'1" x 5'1"
Area: 46 sq. ft
Counted as living area: Yes

Heated: Yes
Finished: Yes
Enclosed: Yes
Contiguous: Yes
Permitted: Yes
Wet space: Yes
Addition: No
Conversion: No

12 Floor 1 - Hall



Dimensions: 5'5" x 9'5"
Area: 51 sq. ft
Counted as living area: Yes

Heated: Yes
Finished: Yes
Enclosed: Yes
Contiguous: Yes
Permitted: Yes
Wet space: No
Addition: No
Conversion: No

13 Floor 1 - Foyer



Dimensions: 6'7" x 9'10"
Area: 65 sq. ft
Counted as living area: Yes

Heated: Yes
Finished: Yes
Enclosed: Yes
Contiguous: Yes
Permitted: Yes
Wet space: No
Addition: No
Conversion: No

14 Floor 1 - Hall



Dimensions: 3'7" x 5'1"
Area: 18 sq. ft
Counted as living area: Yes

Heated: Yes
Finished: Yes
Enclosed: Yes
Contiguous: Yes
Permitted: Yes
Wet space: No
Addition: No
Conversion: No

6875 West Spur Drive, Mesquite, Peoria, Maricopa County,
Arizona, United States, 85383

15 Floor 1 - Garage



Dimensions: 19'9" x 25'5"
Area: 501 sq. ft
Counted as living area: No

Heated: No
Finished: No
Enclosed: Yes
Contiguous: Yes
Permitted: Yes
Wet space: No
Addition: No
Conversion: No

16 Floor 1 - Bath



Dimensions: 11'10" x 11'7"
Area: 137 sq. ft
Counted as living area: Yes

Heated: Yes
Finished: Yes
Enclosed: Yes
Contiguous: Yes
Permitted: Yes
Wet space: Yes
Addition: No
Conversion: No

17 Floor 1 - Bedroom



Dimensions: 11'10" x 18'8"
Area: 221 sq. ft
Counted as living area: Yes

Heated: Yes
Finished: Yes
Enclosed: Yes
Contiguous: Yes
Permitted: Yes
Wet space: No
Addition: No
Conversion: No

6875 West Spur Drive, Mesquite, Peoria, Maricopa County,
Arizona, United States, 85383

18 Floor 1 - Bath



Dimensions: 6'1" x 3'5"
Area: 21 sq. ft
Counted as living area: Yes

Heated: Yes
Finished: Yes
Enclosed: Yes
Contiguous: Yes
Permitted: Yes
Wet space: Yes
Addition: No
Conversion: No

19 Floor 1 - Kitchen



Dimensions: 25'9" x 11'5"
Area: 294 sq. ft
Counted as living area: Yes

Heated: Yes
Finished: Yes
Enclosed: Yes
Contiguous: Yes
Permitted: Yes
Wet space: No
Addition: No
Conversion: No