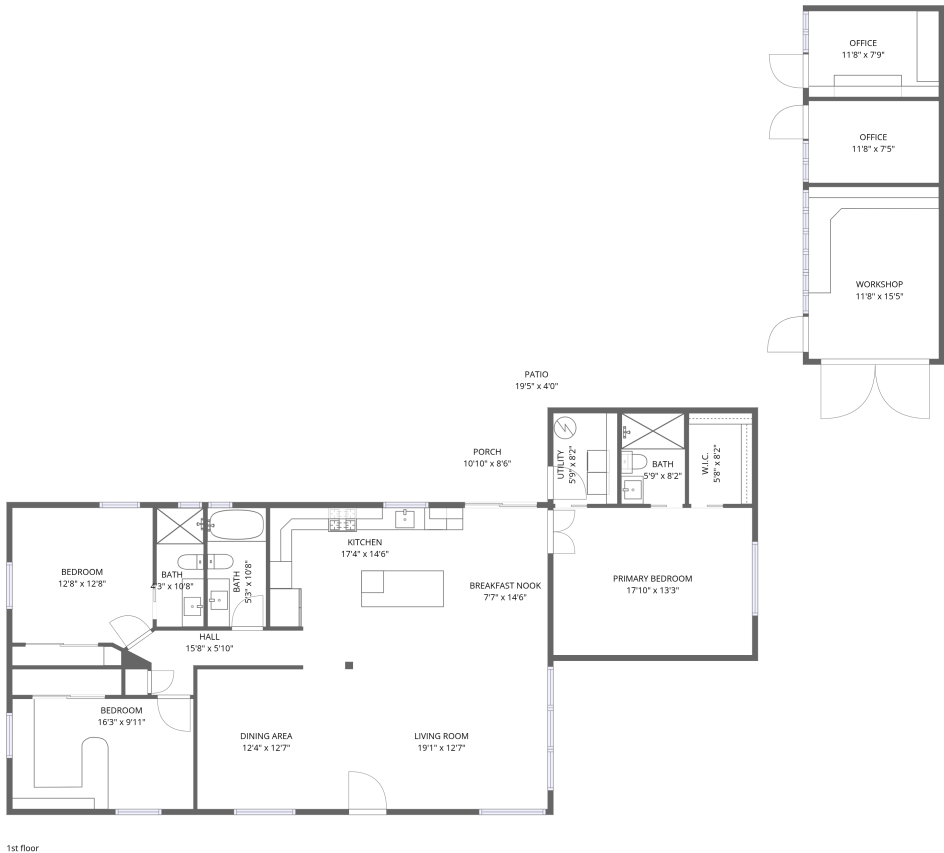


Home data report

1309 West Glenn Drive, Alhambra, Phoenix, Maricopa County, Arizona, United States, 85021




Total Area: 1882 sq. ft

1st Floor: 1882 sq. ft

Excluded: Workshop 181 sq. ft, Porch 92 sq. ft, Patio 77 sq. ft, Walls: 147 sq. ft

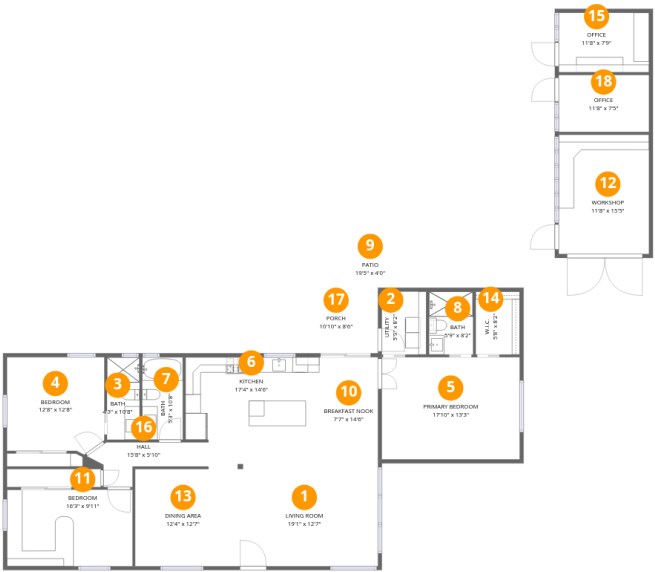
Property summary

 1 Floors

 3 Bedrooms

 3 Bathrooms

1309 West Glenn Drive, Alhambra, Phoenix, Maricopa County, Arizona, United States, 85021



Room dimensions

Floor 1 Total:1882sqft Excluded: 350sqft

#		Dimensions	sqft	Counted as living area
1	Living Room	19'1" x 12'7"	240 sq. ft	Yes
2	Utility	5'9" x 8'2"	47 sq. ft	Yes
3	Bath	4'3" x 10'8"	45 sq. ft	Yes
4	Bedroom	12'8" x 12'8"	160 sq. ft	Yes
5	Primary Bedroom	17'10" x 13'3"	237 sq. ft	Yes
6	Kitchen	17'4" x 14'6"	251 sq. ft	Yes
7	Bath	5'3" x 10'8"	56 sq. ft	Yes
8	Bath	5'9" x 8'2"	47 sq. ft	Yes
9	Patio	19'5" x 4'0"	77 sq. ft	No
10	Breakfast Nook	7'7" x 14'6"	111 sq. ft	Yes
11	Bedroom	16'3" x 9'11"	161 sq. ft	Yes

Home data report

**1309 West Glenn Drive, Alhambra, Phoenix, Maricopa County,
Arizona, United States, 85021**

#		Dimensions	sqft	Counted as living area
12	Workshop	11'8" x 15'5"	181 sq. ft	No
13	Dining Area	12'4" x 12'7"	156 sq. ft	Yes
14	W.I.C.	5'8" x 8'2"	47 sq. ft	Yes
15	Office	11'8" x 7'9"	91 sq. ft	Yes
16	Hall	15'8" x 5'10"	91 sq. ft	Yes
17	Porch	10'10" x 8'6"	92 sq. ft	No
18	Office	11'8" x 7'5"	86 sq. ft	Yes

1309 West Glenn Drive, Alhambra, Phoenix, Maricopa County,
Arizona, United States, 85021

1 Floor 1 - Living Room



Dimensions: 19'1" x 12'7"
Area: 240 sq. ft
Counted as living area: Yes

Heated: Yes
Finished: Yes
Enclosed: Yes
Contiguous: Yes
Permitted: Yes
Wet space: No
Addition: No
Conversion: No

2 Floor 1 - Utility



Dimensions: 5'9" x 8'2"
Area: 47 sq. ft
Counted as living area: Yes

Heated: Yes
Finished: Yes
Enclosed: Yes
Contiguous: Yes
Permitted: Yes
Wet space: No
Addition: No
Conversion: No

1309 West Glenn Drive, Alhambra, Phoenix, Maricopa County, Arizona, United States, 85021

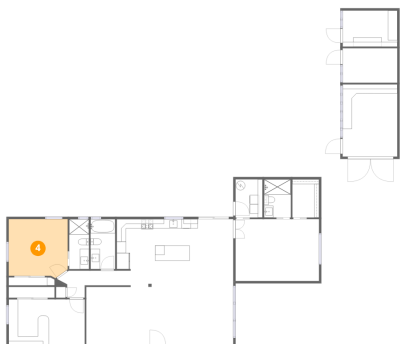
3 Floor 1 - Bath



Dimensions: 4'3" x 10'8"
Area: 45 sq. ft
Counted as living area: Yes

Heated: Yes
Finished: Yes
Enclosed: Yes
Contiguous: Yes
Permitted: Yes
Wet space: Yes
Addition: No
Conversion: No

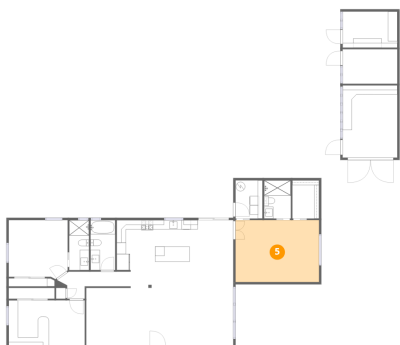
4 Floor 1 - Bedroom



Dimensions: 12'8" x 12'8"
Area: 160 sq. ft
Counted as living area: Yes

Heated: Yes
Finished: Yes
Enclosed: Yes
Contiguous: Yes
Permitted: Yes
Wet space: No
Addition: No
Conversion: No

5 Floor 1 - Primary Bedroom



Dimensions: 17'10" x 13'3"
Area: 237 sq. ft
Counted as living area: Yes

Heated: Yes
Finished: Yes
Enclosed: Yes
Contiguous: Yes
Permitted: Yes
Wet space: No
Addition: No
Conversion: No

1309 West Glenn Drive, Alhambra, Phoenix, Maricopa County, Arizona, United States, 85021

6 Floor 1 - Kitchen



Dimensions: 17'4" x 14'6"
Area: 251 sq. ft
Counted as living area: Yes

Heated: Yes
Finished: Yes
Enclosed: Yes
Contiguous: Yes
Permitted: Yes
Wet space: No
Addition: No
Conversion: No

7 Floor 1 - Bath



Dimensions: 5'3" x 10'8"
Area: 56 sq. ft
Counted as living area: Yes

Heated: Yes
Finished: Yes
Enclosed: Yes
Contiguous: Yes
Permitted: Yes
Wet space: Yes
Addition: No
Conversion: No

8 Floor 1 - Bath

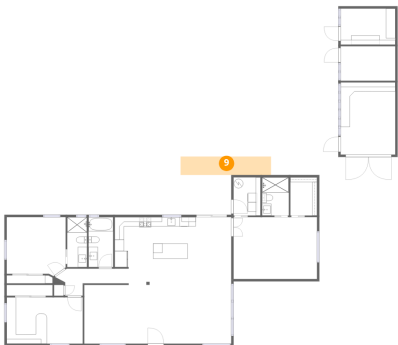


Dimensions: 5'9" x 8'2"
Area: 47 sq. ft
Counted as living area: Yes

Heated: Yes
Finished: Yes
Enclosed: Yes
Contiguous: Yes
Permitted: Yes
Wet space: Yes
Addition: No
Conversion: No

1309 West Glenn Drive, Alhambra, Phoenix, Maricopa County, Arizona, United States, 85021

9 Floor 1 - Patio



Dimensions: 19'5" x 4'0"
Area: 77 sq. ft
Counted as living area: No

Heated: No
Finished: No
Enclosed: No
Contiguous: Yes
Permitted: Yes
Wet space: No
Addition: No
Conversion: No

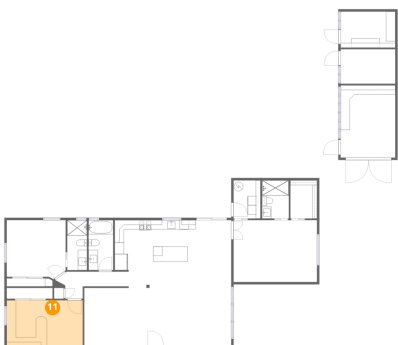
10 Floor 1 - Breakfast Nook



Dimensions: 7'7" x 14'6"
Area: 111 sq. ft
Counted as living area: Yes

Heated: Yes
Finished: Yes
Enclosed: Yes
Contiguous: Yes
Permitted: Yes
Wet space: No
Addition: No
Conversion: No

11 Floor 1 - Bedroom



Dimensions: 16'3" x 9'11"
Area: 161 sq. ft
Counted as living area: Yes

Heated: Yes
Finished: Yes
Enclosed: Yes
Contiguous: Yes
Permitted: Yes
Wet space: No
Addition: No
Conversion: No

1309 West Glenn Drive, Alhambra, Phoenix, Maricopa County,
Arizona, United States, 85021

12 Floor 1 - Workshop



Dimensions: 11'8" x 15'5"
Area: 181 sq. ft
Counted as living area: No

Heated: No
Finished: No
Enclosed: Yes
Contiguous: Yes
Permitted: Yes
Wet space: No
Addition: No
Conversion: No

13 Floor 1 - Dining Area



Dimensions: 12'4" x 12'7"
Area: 156 sq. ft
Counted as living area: Yes

Heated: Yes
Finished: Yes
Enclosed: Yes
Contiguous: Yes
Permitted: Yes
Wet space: No
Addition: No
Conversion: No

14 Floor 1 - W.I.C.



Dimensions: 5'8" x 8'2"
Area: 47 sq. ft
Counted as living area: Yes

Heated: Yes
Finished: Yes
Enclosed: Yes
Contiguous: Yes
Permitted: Yes
Wet space: No
Addition: No
Conversion: No

1309 West Glenn Drive, Alhambra, Phoenix, Maricopa County,
Arizona, United States, 85021

15 Floor 1 - Office



Dimensions: 11'8" x 7'9"
Area: 91 sq. ft
Counted as living area: Yes

Heated: Yes
Finished: Yes
Enclosed: Yes
Contiguous: Yes
Permitted: Yes
Wet space: No
Addition: No
Conversion: No

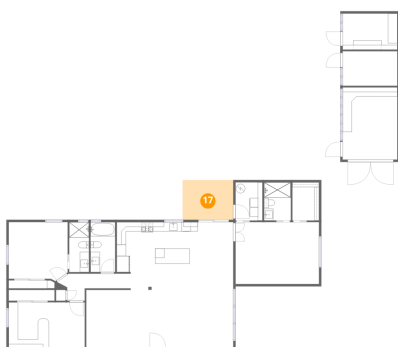
16 Floor 1 - Hall



Dimensions: 15'8" x 5'10"
Area: 91 sq. ft
Counted as living area: Yes

Heated: Yes
Finished: Yes
Enclosed: Yes
Contiguous: Yes
Permitted: Yes
Wet space: No
Addition: No
Conversion: No

17 Floor 1 - Porch



Dimensions: 10'10" x 8'6"
Area: 92 sq. ft
Counted as living area: No

Heated: No
Finished: No
Enclosed: No
Contiguous: Yes
Permitted: Yes
Wet space: No
Addition: No
Conversion: No

1309 West Glenn Drive, Alhambra, Phoenix, Maricopa County,
Arizona, United States, 85021

18 Floor 1 - Office



Dimensions: 11'8" x 7'5"
Area: 86 sq. ft
Counted as living area: Yes

Heated: Yes
Finished: Yes
Enclosed: Yes
Contiguous: Yes
Permitted: Yes
Wet space: No
Addition: No
Conversion: No