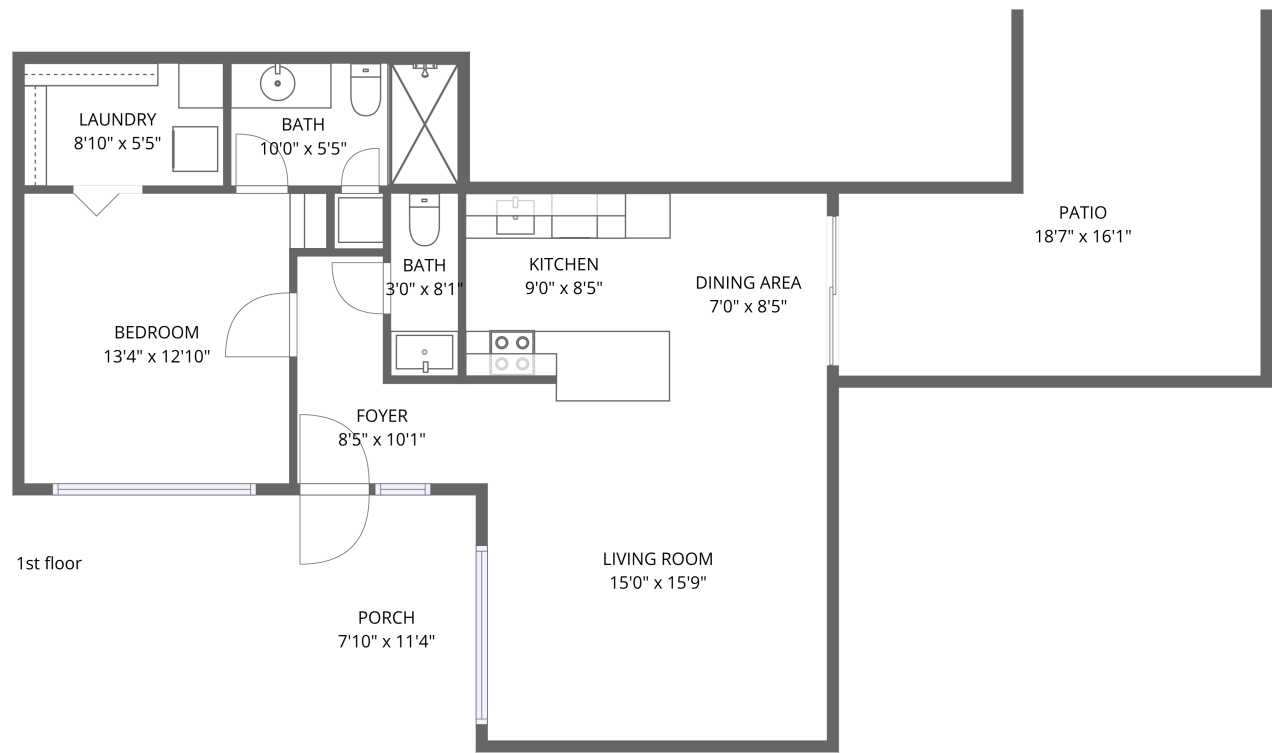


Home data report

4800 North 68th Street, Indian Bend, Scottsdale, Maricopa County, Arizona, United States, 85251, 162



Total Area: 735 sq. ft

1st Floor: 735 sq. ft

Excluded: Patio 235 sq. ft, Porch 90 sq. ft, Walls: 0 sq. ft

Property summary

 **1** Floors

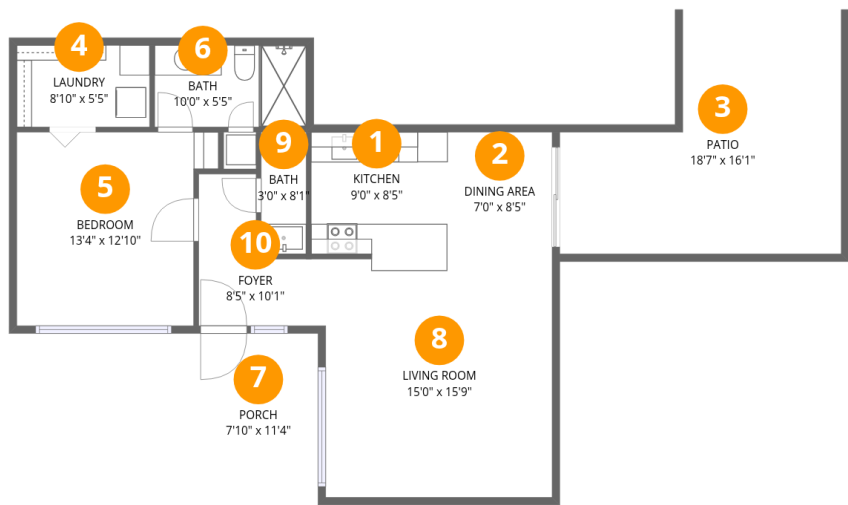
 **1** Bedrooms

 **1** Bathrooms

 **1** Half baths

Home data report

4800 North 68th Street, Indian Bend, Scottsdale, Maricopa County, Arizona, United States, 85251, 162

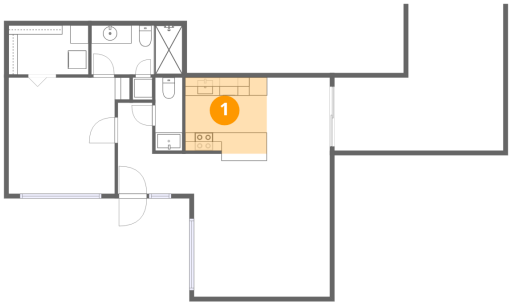


Room dimensions

Floor 1 Total:735sqft Excluded: 325sqft

#		Dimensions	sqft	Counted as living area
1	Kitchen	9'0" x 8'5"	75 sq. ft	Yes
2	Dining Area	7'0" x 8'5"	58 sq. ft	Yes
3	Patio	18'7" x 16'1"	300 sq. ft	No
4	Laundry	8'10" x 5'5"	47 sq. ft	Yes
5	Bedroom	13'4" x 12'10"	171 sq. ft	Yes
6	Bath	10'0" x 5'5"	54 sq. ft	Yes
7	Porch	7'10" x 11'4"	89 sq. ft	No
8	Living Room	15'0" x 15'9"	237 sq. ft	Yes
9	Bath	3'0" x 8'1"	24 sq. ft	Yes
10	Foyer	8'5" x 10'1"	84 sq. ft	Yes

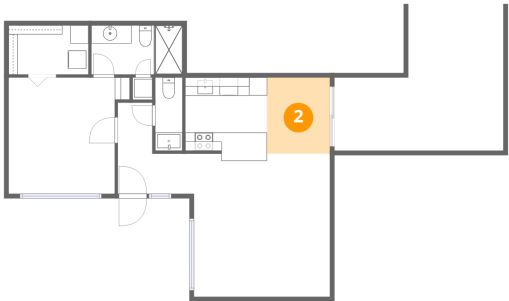
1 Floor 1 - Kitchen



Dimensions: 9'0" x 8'5"
Area: 75 sq. ft
Counted as living area: Yes

Heated: Yes
Finished: Yes
Enclosed: Yes
Contiguous: Yes
Permitted: Yes
Wet space: No
Addition: No
Conversion: No

2 Floor 1 - Dining Area



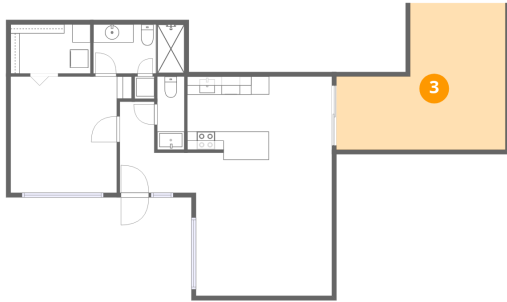
Dimensions: 7'0" x 8'5"
Area: 58 sq. ft
Counted as living area: Yes

Heated: Yes
Finished: Yes
Enclosed: Yes
Contiguous: Yes
Permitted: Yes
Wet space: No
Addition: No
Conversion: No

Home data report

4800 North 68th Street, Indian Bend, Scottsdale, Maricopa County, Arizona, United States, 85251, 162

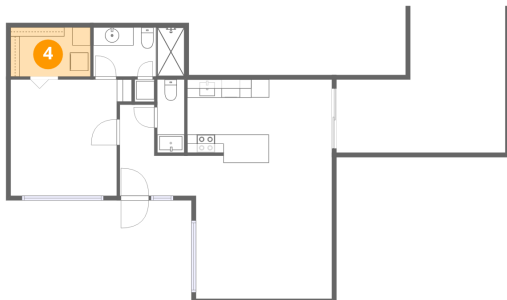
3 Floor 1 - Patio



Dimensions: 18'7" x 16'1"
Area: 300 sq. ft
Counted as living area: No

Heated: No
Finished: No
Enclosed: No
Contiguous: Yes
Permitted: Yes
Wet space: No
Addition: No
Conversion: No

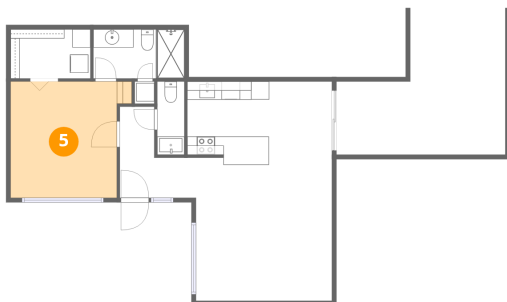
4 Floor 1 - Laundry



Dimensions: 8'10" x 5'5"
Area: 47 sq. ft
Counted as living area: Yes

Heated: Yes
Finished: Yes
Enclosed: Yes
Contiguous: Yes
Permitted: Yes
Wet space: No
Addition: No
Conversion: No

5 Floor 1 - Bedroom



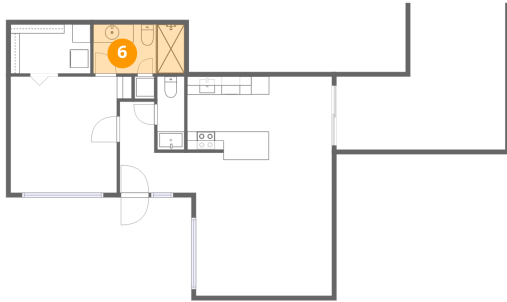
Dimensions: 13'4" x 12'10"
Area: 171 sq. ft
Counted as living area: Yes

Heated: Yes
Finished: Yes
Enclosed: Yes
Contiguous: Yes
Permitted: Yes
Wet space: No
Addition: No
Conversion: No

Home data report

4800 North 68th Street, Indian Bend, Scottsdale, Maricopa County, Arizona, United States, 85251, 162

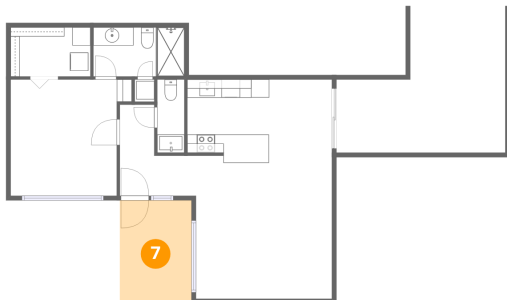
6 Floor 1 - Bath



Dimensions: 10'0" x 5'5"
Area: 54 sq. ft
Counted as living area: Yes

Heated: Yes
Finished: Yes
Enclosed: Yes
Contiguous: Yes
Permitted: Yes
Wet space: Yes
Addition: No
Conversion: No

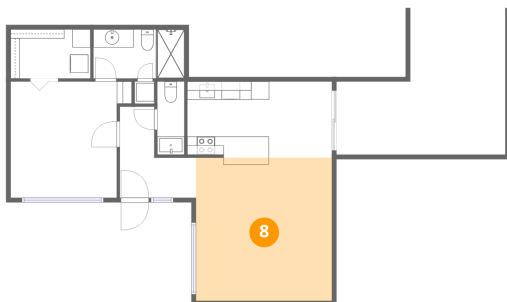
7 Floor 1 - Porch



Dimensions: 7'10" x 11'4"
Area: 89 sq. ft
Counted as living area: No

Heated: No
Finished: No
Enclosed: No
Contiguous: Yes
Permitted: Yes
Wet space: No
Addition: No
Conversion: No

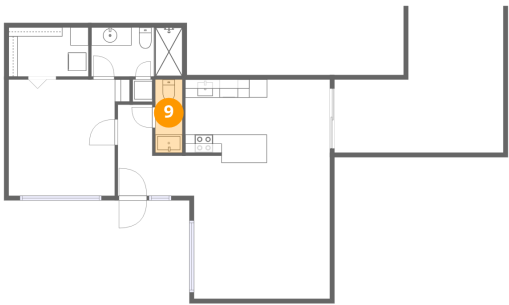
8 Floor 1 - Living Room



Dimensions: 15'0" x 15'9"
Area: 237 sq. ft
Counted as living area: Yes

Heated: Yes
Finished: Yes
Enclosed: Yes
Contiguous: Yes
Permitted: Yes
Wet space: No
Addition: No
Conversion: No

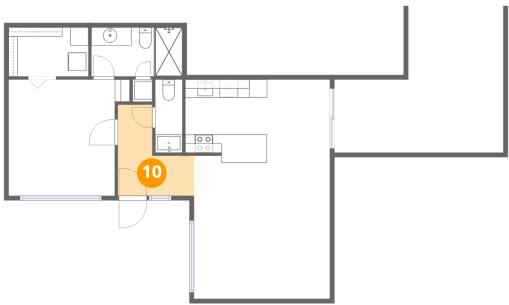
9 Floor 1 - Bath



Dimensions: 3'0" x 8'1"
Area: 24 sq. ft
Counted as living area: Yes

Heated: Yes
Finished: Yes
Enclosed: Yes
Contiguous: Yes
Permitted: Yes
Wet space: Yes
Addition: No
Conversion: No

10 Floor 1 - Foyer



Dimensions: 8'5" x 10'1"
Area: 84 sq. ft
Counted as living area: Yes

Heated: Yes
Finished: Yes
Enclosed: Yes
Contiguous: Yes
Permitted: Yes
Wet space: No
Addition: No
Conversion: No