

Home data report

1215 Sycamore Drive, Jenison, Ottawa County, Michigan, United States, 49428



**Total Area: 1840 sq. ft**

Basement 1: 0 sq. ft, 1st Floor: 1840 sq. ft

Excluded: Storage 272 sq. ft, Basement 1075 sq. ft, Garage 445 sq. ft, Undefined 14 sq. ft, Deck 390 sq. ft, Porch 20 sq. ft, Embeddedwindow 9 sq. ft, Fireplace 15 sq. ft, Walls: 222 sq. ft

Property summary

**2**  
Floors

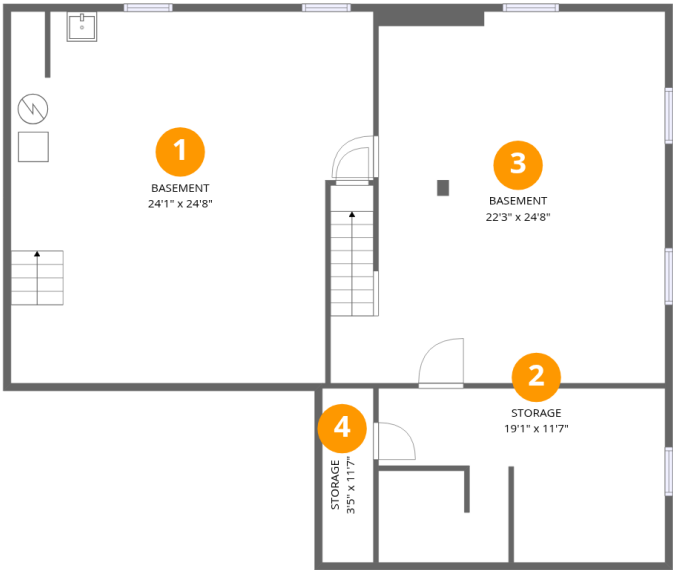
**3**  
Bedrooms

**1**  
Bathrooms

**1**  
Garages

Home data report

1215 Sycamore Drive, Jenison, Ottawa County, Michigan, United States, 49428



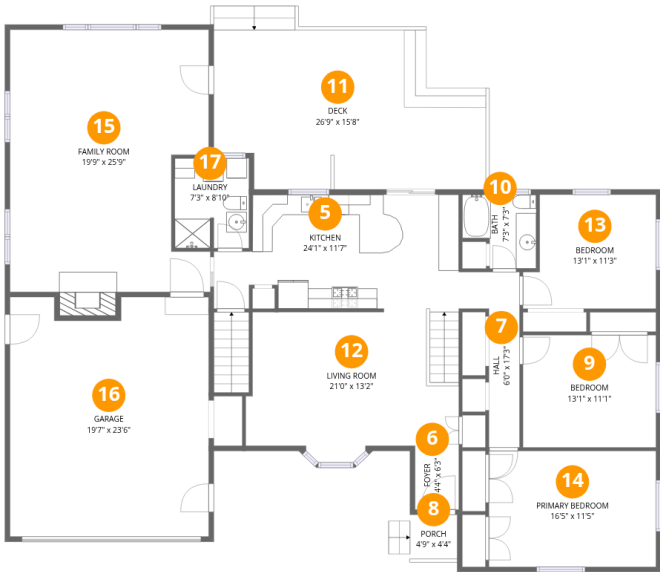
Room dimensions

Floor 1 Below grade Total:0sqft   Excluded: 1347sqft

#		Dimensions	sqft	Counted as living area
1	Basement	24'1" x 24'8"	595 sq. ft	No
2	Storage	19'1" x 11'7"	221 sq. ft	No
3	Basement	22'3" x 24'8"	549 sq. ft	No
4	Storage	3'5" x 11'7"	39 sq. ft	No

Home data report

1215 Sycamore Drive, Jenison, Ottawa County, Michigan, United States, 49428



Room dimensions

Floor 2

Total:1840sqft    Excluded: 893sqft

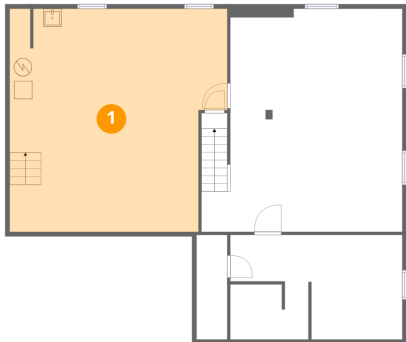
#		Dimensions	sqft	Counted as living area
5	Kitchen	24'1" x 11'7"	278 sq. ft	Yes
6	Foyer	4'4" x 6'3"	27 sq. ft	Yes
7	Hall	6'0" x 17'3"	103 sq. ft	Yes
8	Porch	4'9" x 4'4"	20 sq. ft	No
9	Bedroom	13'1" x 11'1"	145 sq. ft	Yes
10	Bath	7'3" x 7'3"	53 sq. ft	Yes
11	Deck	26'9" x 15'8"	419 sq. ft	No
12	Living Room	21'0" x 13'2"	276 sq. ft	Yes
13	Bedroom	13'1" x 11'3"	147 sq. ft	Yes
14	Primary Bedroom	16'5" x 11'5"	188 sq. ft	Yes
15	Family Room	19'9" x 25'9"	508 sq. ft	Yes

Home data report

1215 Sycamore Drive, Jenison, Ottawa County, Michigan, United States, 49428

#		Dimensions	sqft	Counted as living area
16	Garage	19'7" x 23'6"	460 sq. ft	No
17	Laundry	7'3" x 8'10"	64 sq. ft	Yes

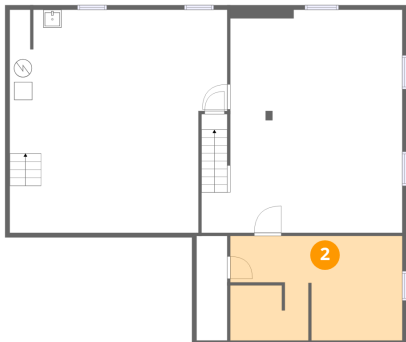
1 Floor 1 - Basement



Dimensions: 24'1" x 24'8"  
Area: 595 sq. ft  
Counted as living area: No

Heated: Yes  
Finished: No  
Enclosed: Yes  
Contiguous: Yes  
Permitted: Yes  
Wet space: No  
Addition: No  
Conversion: No

2 Floor 1 - Storage



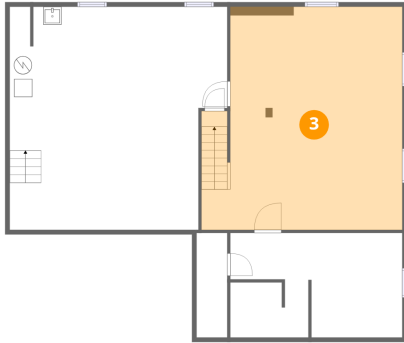
Dimensions: 19'1" x 11'7"  
Area: 221 sq. ft  
Counted as living area: No

Heated: No  
Finished: No  
Enclosed: No  
Contiguous: Yes  
Permitted: Yes  
Wet space: No  
Addition: No  
Conversion: No

## Home data report

1215 Sycamore Drive, Jenison, Ottawa County, Michigan, United States, 49428

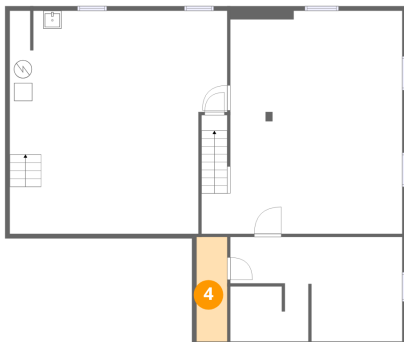
### 3 Floor 1 - Basement



Dimensions: 22'3" x 24'8"  
Area: 549 sq. ft  
Counted as living area: No

Heated: Yes  
Finished: No  
Enclosed: Yes  
Contiguous: Yes  
Permitted: Yes  
Wet space: No  
Addition: No  
Conversion: No

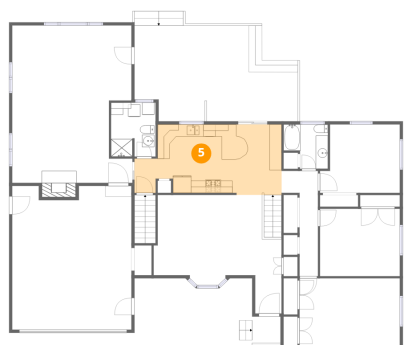
### 4 Floor 1 - Storage



Dimensions: 3'5" x 11'7"  
Area: 39 sq. ft  
Counted as living area: No

Heated: No  
Finished: No  
Enclosed: No  
Contiguous: Yes  
Permitted: Yes  
Wet space: No  
Addition: No  
Conversion: No

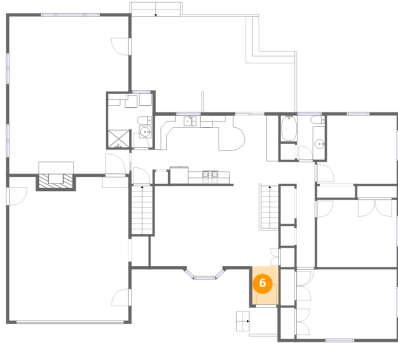
### 5 Floor 2 - Kitchen



Dimensions: 24'1" x 11'7"  
Area: 278 sq. ft  
Counted as living area: Yes

Heated: Yes  
Finished: Yes  
Enclosed: Yes  
Contiguous: Yes  
Permitted: Yes  
Wet space: No  
Addition: No  
Conversion: No

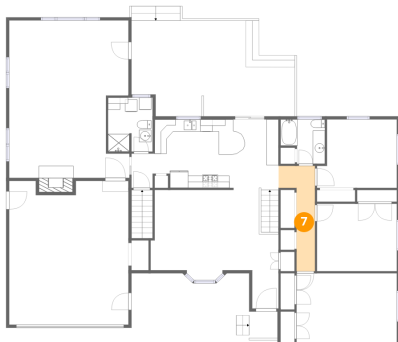
## 6 Floor 2 - Foyer



Dimensions: 4'4" x 6'3"  
Area: 27 sq. ft  
Counted as living area: Yes

Heated: Yes  
Finished: Yes  
Enclosed: Yes  
Contiguous: Yes  
Permitted: Yes  
Wet space: No  
Addition: No  
Conversion: No

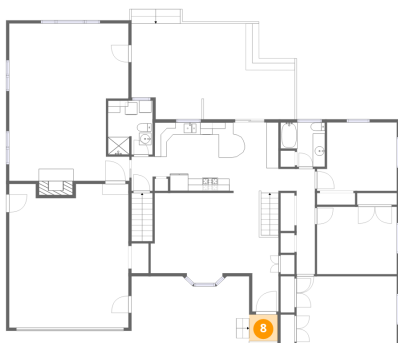
## 7 Floor 2 - Hall



Dimensions: 6'0" x 17'3"  
Area: 103 sq. ft  
Counted as living area: Yes

Heated: Yes  
Finished: Yes  
Enclosed: Yes  
Contiguous: Yes  
Permitted: Yes  
Wet space: No  
Addition: No  
Conversion: No

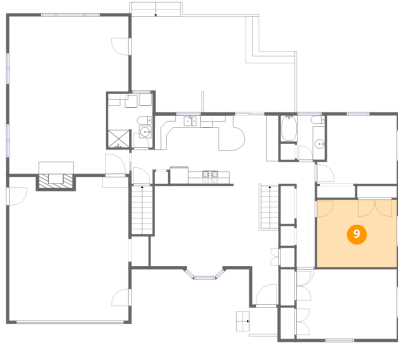
## 8 Floor 2 - Porch



Dimensions: 4'9" x 4'4"  
Area: 20 sq. ft  
Counted as living area: No

Heated: No  
Finished: No  
Enclosed: No  
Contiguous: Yes  
Permitted: Yes  
Wet space: No  
Addition: No  
Conversion: No

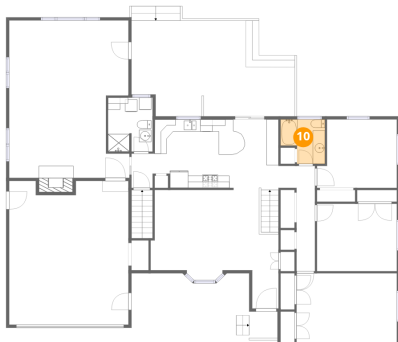
## 9 Floor 2 - Bedroom



Dimensions: 13'1" x 11'1"  
Area: 145 sq. ft  
Counted as living area: Yes

Heated: Yes  
Finished: Yes  
Enclosed: Yes  
Contiguous: Yes  
Permitted: Yes  
Wet space: No  
Addition: No  
Conversion: No

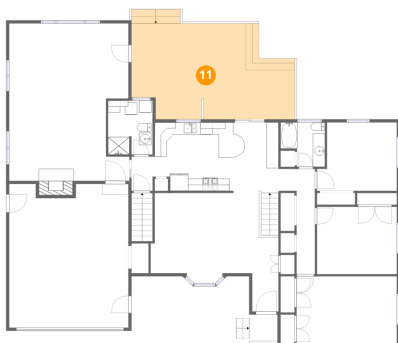
## 10 Floor 2 - Bath



Dimensions: 7'3" x 7'3"  
Area: 53 sq. ft  
Counted as living area: Yes

Heated: Yes  
Finished: Yes  
Enclosed: Yes  
Contiguous: Yes  
Permitted: Yes  
Wet space: Yes  
Addition: No  
Conversion: No

## 11 Floor 2 - Deck



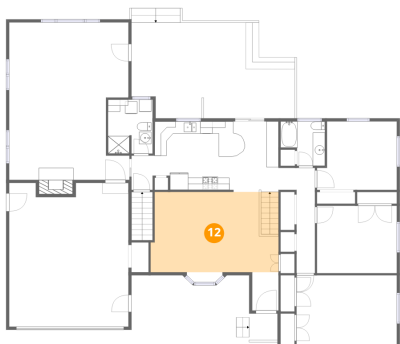
Dimensions: 26'9" x 15'8"  
Area: 419 sq. ft  
Counted as living area: No

Heated: No  
Finished: No  
Enclosed: No  
Contiguous: Yes  
Permitted: Yes  
Wet space: No  
Addition: No  
Conversion: No



1215 Sycamore Drive, Jenison, Ottawa County, Michigan, United States, 49428

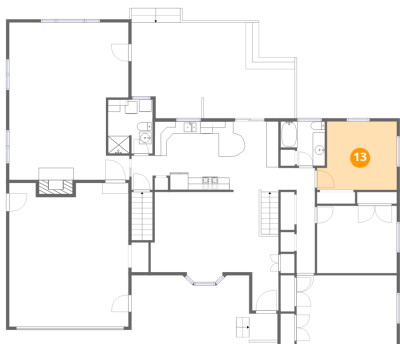
## 12 Floor 2 - Living Room



Dimensions: 21'0" x 13'2"  
Area: 276 sq. ft  
Counted as living area: Yes

Heated: Yes  
Finished: Yes  
Enclosed: Yes  
Contiguous: Yes  
Permitted: Yes  
Wet space: No  
Addition: No  
Conversion: No

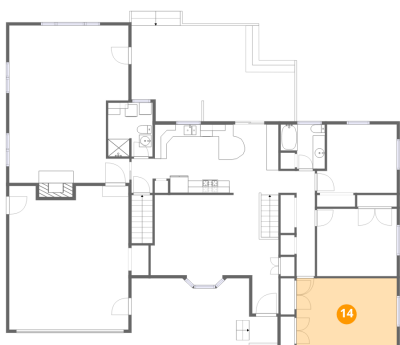
## 13 Floor 2 - Bedroom



Dimensions: 13'1" x 11'3"  
Area: 147 sq. ft  
Counted as living area: Yes

Heated: Yes  
Finished: Yes  
Enclosed: Yes  
Contiguous: Yes  
Permitted: Yes  
Wet space: No  
Addition: No  
Conversion: No

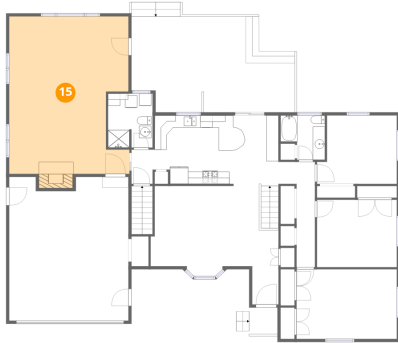
## 14 Floor 2 - Primary Bedroom



Dimensions: 16'5" x 11'5"  
Area: 188 sq. ft  
Counted as living area: Yes

Heated: Yes  
Finished: Yes  
Enclosed: Yes  
Contiguous: Yes  
Permitted: Yes  
Wet space: No  
Addition: No  
Conversion: No

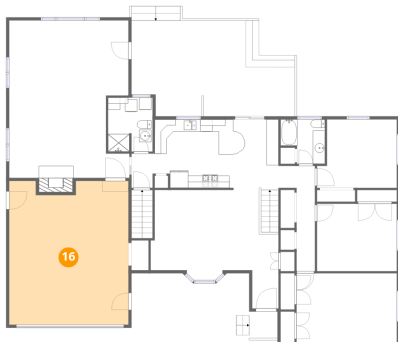
## 15 Floor 2 - Family Room



Dimensions: 19'9" x 25'9"  
Area: 508 sq. ft  
Counted as living area: Yes

Heated: Yes  
Finished: Yes  
Enclosed: Yes  
Contiguous: Yes  
Permitted: Yes  
Wet space: No  
Addition: No  
Conversion: No

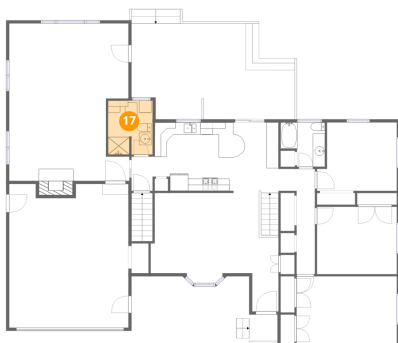
## 16 Floor 2 - Garage



Dimensions: 19'7" x 23'6"  
Area: 460 sq. ft  
Counted as living area: No

Heated: No  
Finished: No  
Enclosed: Yes  
Contiguous: Yes  
Permitted: Yes  
Wet space: No  
Addition: No  
Conversion: No

## 17 Floor 2 - Laundry



Dimensions: 7'3" x 8'10"  
Area: 64 sq. ft  
Counted as living area: Yes

Heated: Yes  
Finished: Yes  
Enclosed: Yes  
Contiguous: Yes  
Permitted: Yes  
Wet space: No  
Addition: No  
Conversion: No