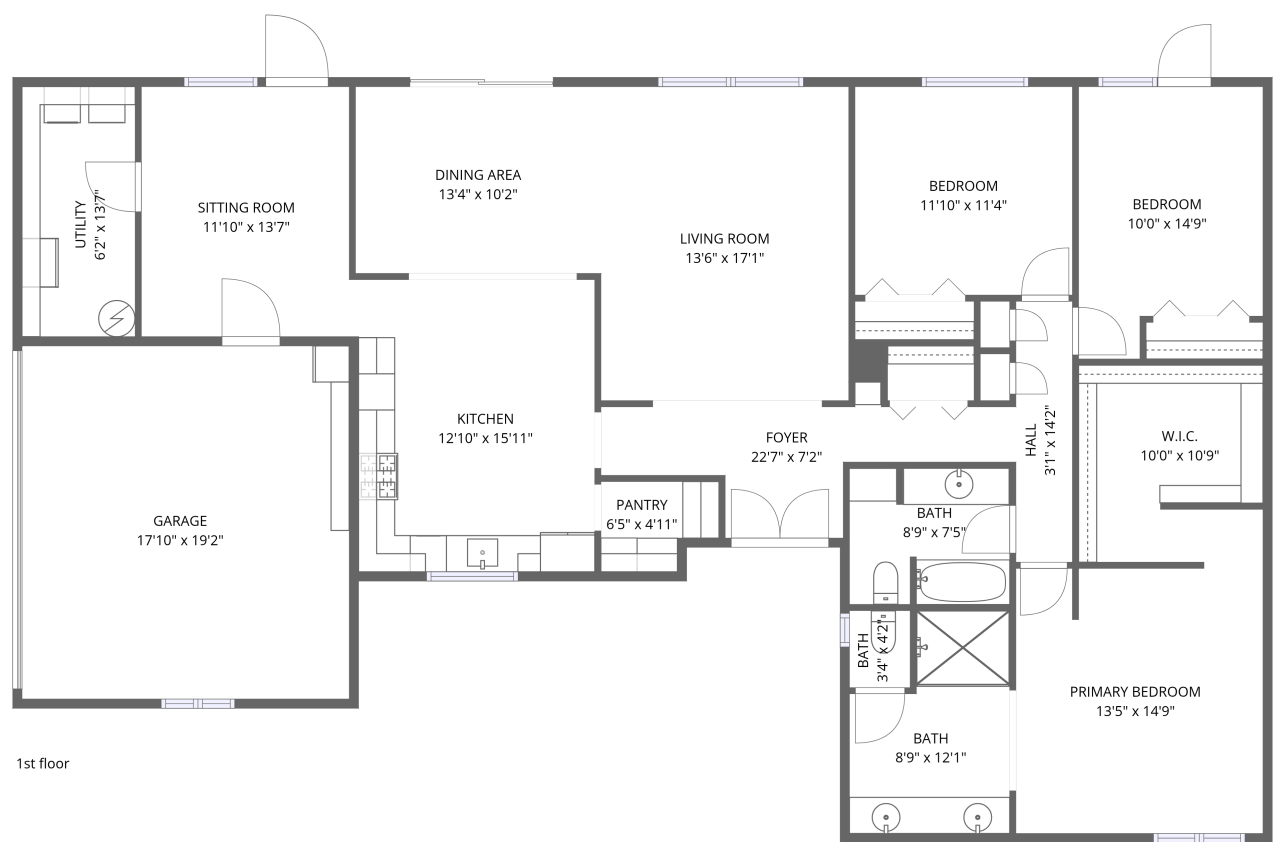


Home data report

6502 East Sweetwater Avenue, Scottsdale, Maricopa County,
Arizona, United States, 85254




Total Area: 1851 sq. ft

1st Floor: 1851 sq. ft


Excluded: Garage 342 sq. ft, Walls: 134 sq. ft

Property summary

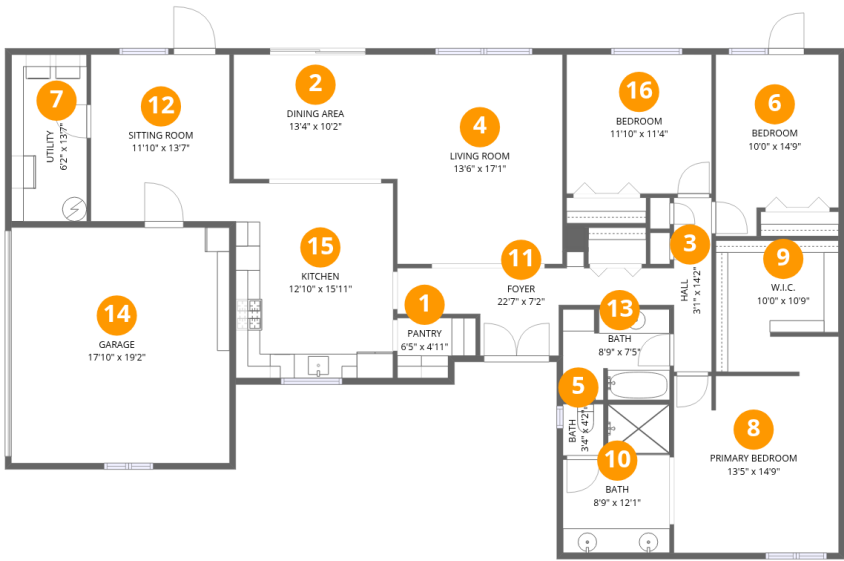
 **1** Floors

 **3** Bedrooms

 **2** Bathrooms

 **1** Garages

6502 East Sweetwater Avenue, Scottsdale, Maricopa County, Arizona, United States, 85254



Room dimensions

Floor 1 Total:1851sqft Excluded: 342sqft

#		Dimensions	sqft	Counted as living area
1	Pantry	6'5" x 4'11"	32 sq. ft	Yes
2	Dining Area	13'4" x 10'2"	136 sq. ft	Yes
3	Hall	3'1" x 14'2"	44 sq. ft	Yes
4	Living Room	13'6" x 17'1"	230 sq. ft	Yes
5	Bath	3'4" x 4'2"	14 sq. ft	Yes
6	Bedroom	10'0" x 14'9"	148 sq. ft	Yes
7	Utility	6'2" x 13'7"	83 sq. ft	Yes
8	Primary Bedroom	13'5" x 14'9"	198 sq. ft	Yes
9	W.I.C.	10'0" x 10'9"	108 sq. ft	Yes
10	Bath	8'9" x 12'1"	105 sq. ft	Yes
11	Foyer	22'7" x 7'2"	161 sq. ft	Yes

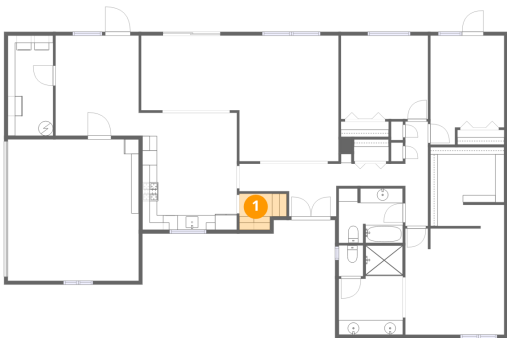
Home data report

**6502 East Sweetwater Avenue, Scottsdale, Maricopa County,
Arizona, United States, 85254**

#		Dimensions	sqft	Counted as living area
12	Sitting Room	11'10" x 13'7"	161 sq. ft	Yes
13	Bath	8'9" x 7'5"	65 sq. ft	Yes
14	Garage	17'10" x 19'2"	342 sq. ft	No
15	Kitchen	12'10" x 15'11"	204 sq. ft	Yes
16	Bedroom	11'10" x 11'4"	134 sq. ft	Yes

6502 East Sweetwater Avenue, Scottsdale, Maricopa County,
Arizona, United States, 85254

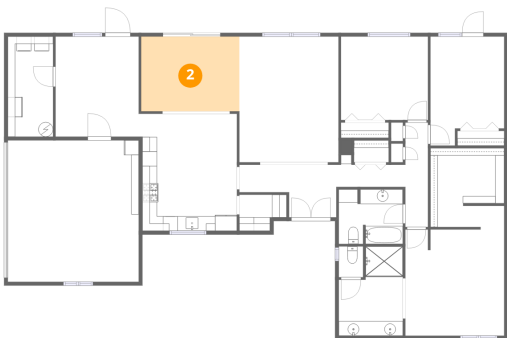
1 Floor 1 - Pantry



Dimensions: 6'5" x 4'11"
Area: 32 sq. ft
Counted as living area: Yes

Heated: Yes
Finished: Yes
Enclosed: Yes
Contiguous: Yes
Permitted: Yes
Wet space: No
Addition: No
Conversion: No

2 Floor 1 - Dining Area



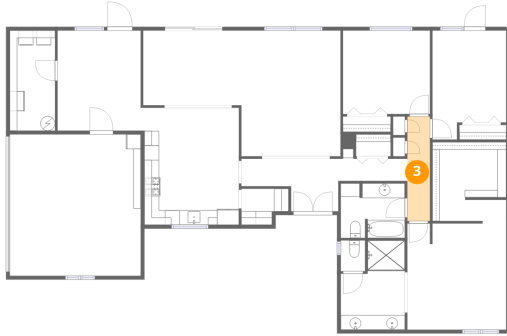
Dimensions: 13'4" x 10'2"
Area: 136 sq. ft
Counted as living area: Yes

Heated: Yes
Finished: Yes
Enclosed: Yes
Contiguous: Yes
Permitted: Yes
Wet space: No
Addition: No
Conversion: No

Home data report

6502 East Sweetwater Avenue, Scottsdale, Maricopa County,
Arizona, United States, 85254

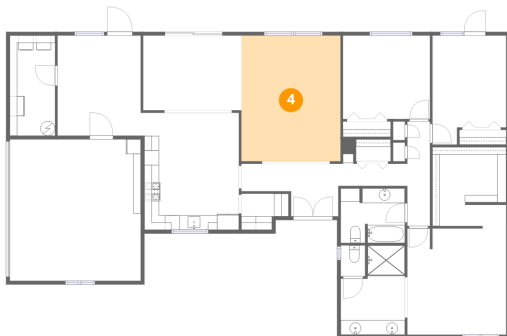
3 Floor 1 - Hall



Dimensions: 3'1" x 14'2"
Area: 44 sq. ft
Counted as living area: Yes

Heated: Yes
Finished: Yes
Enclosed: Yes
Contiguous: Yes
Permitted: Yes
Wet space: No
Addition: No
Conversion: No

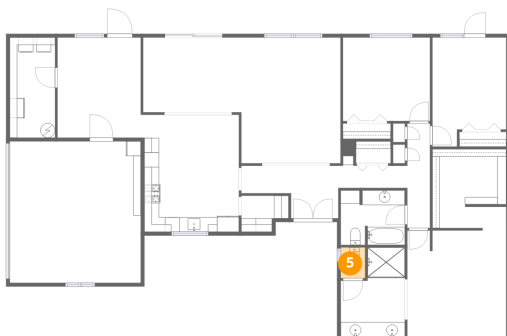
4 Floor 1 - Living Room



Dimensions: 13'6" x 17'1"
Area: 230 sq. ft
Counted as living area: Yes

Heated: Yes
Finished: Yes
Enclosed: Yes
Contiguous: Yes
Permitted: Yes
Wet space: No
Addition: No
Conversion: No

5 Floor 1 - Bath

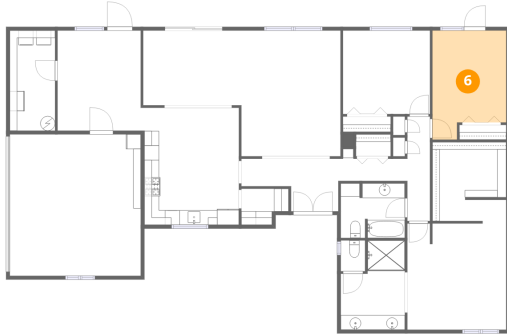


Dimensions: 3'4" x 4'2"
Area: 14 sq. ft
Counted as living area: Yes

Heated: Yes
Finished: Yes
Enclosed: Yes
Contiguous: Yes
Permitted: Yes
Wet space: Yes
Addition: No
Conversion: No

6502 East Sweetwater Avenue, Scottsdale, Maricopa County,
Arizona, United States, 85254

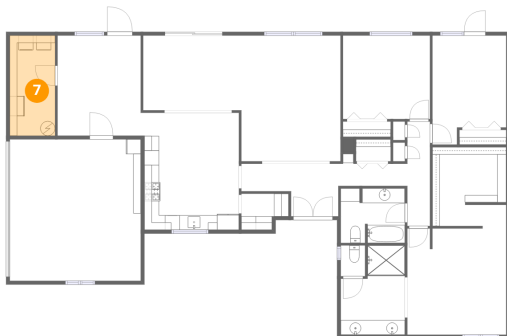
6 Floor 1 - Bedroom



Dimensions: 10'0" x 14'9"
Area: 148 sq. ft
Counted as living area: Yes

Heated: Yes
Finished: Yes
Enclosed: Yes
Contiguous: Yes
Permitted: Yes
Wet space: No
Addition: No
Conversion: No

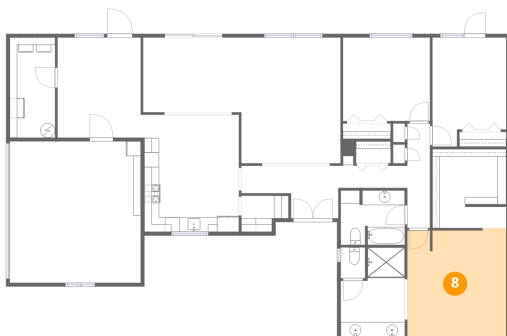
7 Floor 1 - Utility



Dimensions: 6'2" x 13'7"
Area: 83 sq. ft
Counted as living area: Yes

Heated: Yes
Finished: Yes
Enclosed: Yes
Contiguous: Yes
Permitted: Yes
Wet space: No
Addition: No
Conversion: No

8 Floor 1 - Primary Bedroom



Dimensions: 13'5" x 14'9"
Area: 198 sq. ft
Counted as living area: Yes

Heated: Yes
Finished: Yes
Enclosed: Yes
Contiguous: Yes
Permitted: Yes
Wet space: No
Addition: No
Conversion: No

6502 East Sweetwater Avenue, Scottsdale, Maricopa County,
Arizona, United States, 85254

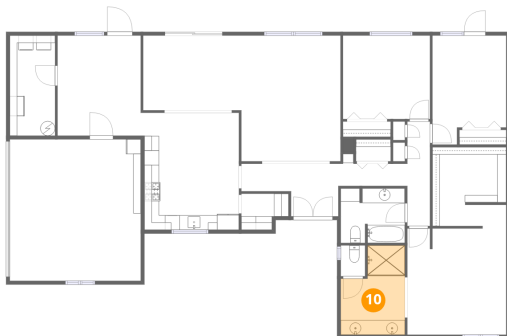
9 Floor 1 - W.I.C.



Dimensions: 10'0" x 10'9"
Area: 108 sq. ft
Counted as living area: Yes

Heated: Yes
Finished: Yes
Enclosed: Yes
Contiguous: Yes
Permitted: Yes
Wet space: No
Addition: No
Conversion: No

10 Floor 1 - Bath



Dimensions: 8'9" x 12'1"
Area: 105 sq. ft
Counted as living area: Yes

Heated: Yes
Finished: Yes
Enclosed: Yes
Contiguous: Yes
Permitted: Yes
Wet space: Yes
Addition: No
Conversion: No

11 Floor 1 - Foyer

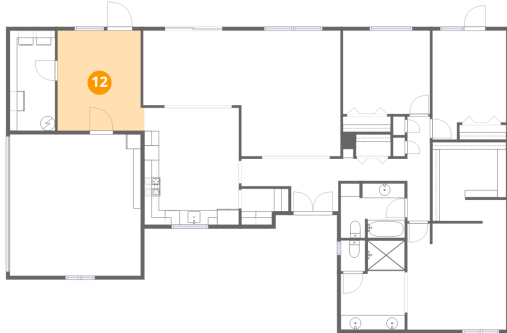


Dimensions: 22'7" x 7'2"
Area: 161 sq. ft
Counted as living area: Yes

Heated: Yes
Finished: Yes
Enclosed: Yes
Contiguous: Yes
Permitted: Yes
Wet space: No
Addition: No
Conversion: No

6502 East Sweetwater Avenue, Scottsdale, Maricopa County,
Arizona, United States, 85254

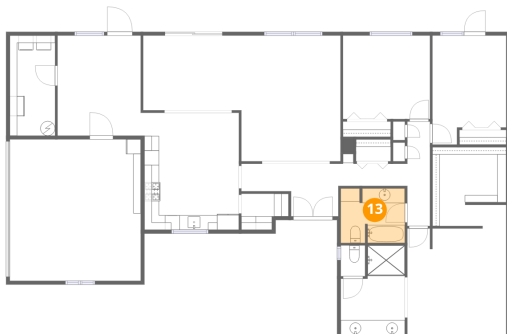
12 Floor 1 - Sitting Room



Dimensions: 11'10" x 13'7"
Area: 161 sq. ft
Counted as living area: Yes

Heated: Yes
Finished: Yes
Enclosed: Yes
Contiguous: Yes
Permitted: Yes
Wet space: No
Addition: No
Conversion: No

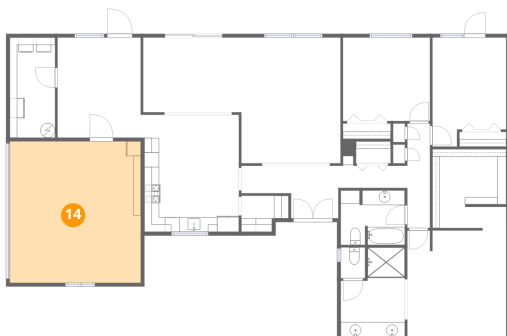
13 Floor 1 - Bath



Dimensions: 8'9" x 7'5"
Area: 65 sq. ft
Counted as living area: Yes

Heated: Yes
Finished: Yes
Enclosed: Yes
Contiguous: Yes
Permitted: Yes
Wet space: Yes
Addition: No
Conversion: No

14 Floor 1 - Garage

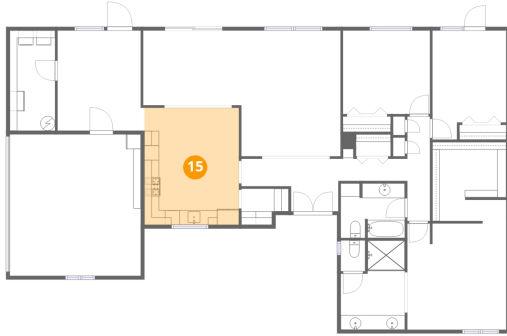


Dimensions: 17'10" x 19'2"
Area: 342 sq. ft
Counted as living area: No

Heated: No
Finished: No
Enclosed: Yes
Contiguous: Yes
Permitted: Yes
Wet space: No
Addition: No
Conversion: No

6502 East Sweetwater Avenue, Scottsdale, Maricopa County,
Arizona, United States, 85254

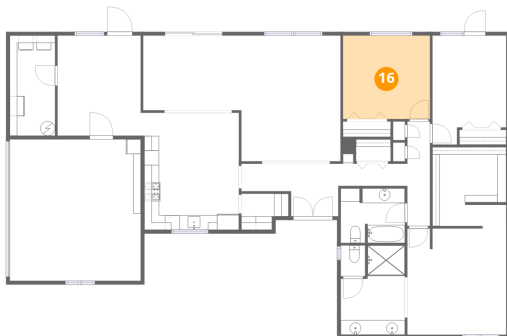
15 Floor 1 - Kitchen



Dimensions: 12'10" x 15'11"
Area: 204 sq. ft
Counted as living area: Yes

Heated: Yes
Finished: Yes
Enclosed: Yes
Contiguous: Yes
Permitted: Yes
Wet space: No
Addition: No
Conversion: No

16 Floor 1 - Bedroom



Dimensions: 11'10" x 11'4"
Area: 134 sq. ft
Counted as living area: Yes

Heated: Yes
Finished: Yes
Enclosed: Yes
Contiguous: Yes
Permitted: Yes
Wet space: No
Addition: No
Conversion: No