

PROJECT NO: BK-2020 PG-1-1
 P202000001
 PROJECT NAME: GARDEN CITY COMMUNITY CENTER
 PROJECT ADDRESS: 1261 ATLANTA HIGHWAY, G.M.D. 240, OCONEE COUNTY, GA.
 PROJECT DATE: 12/30/2019

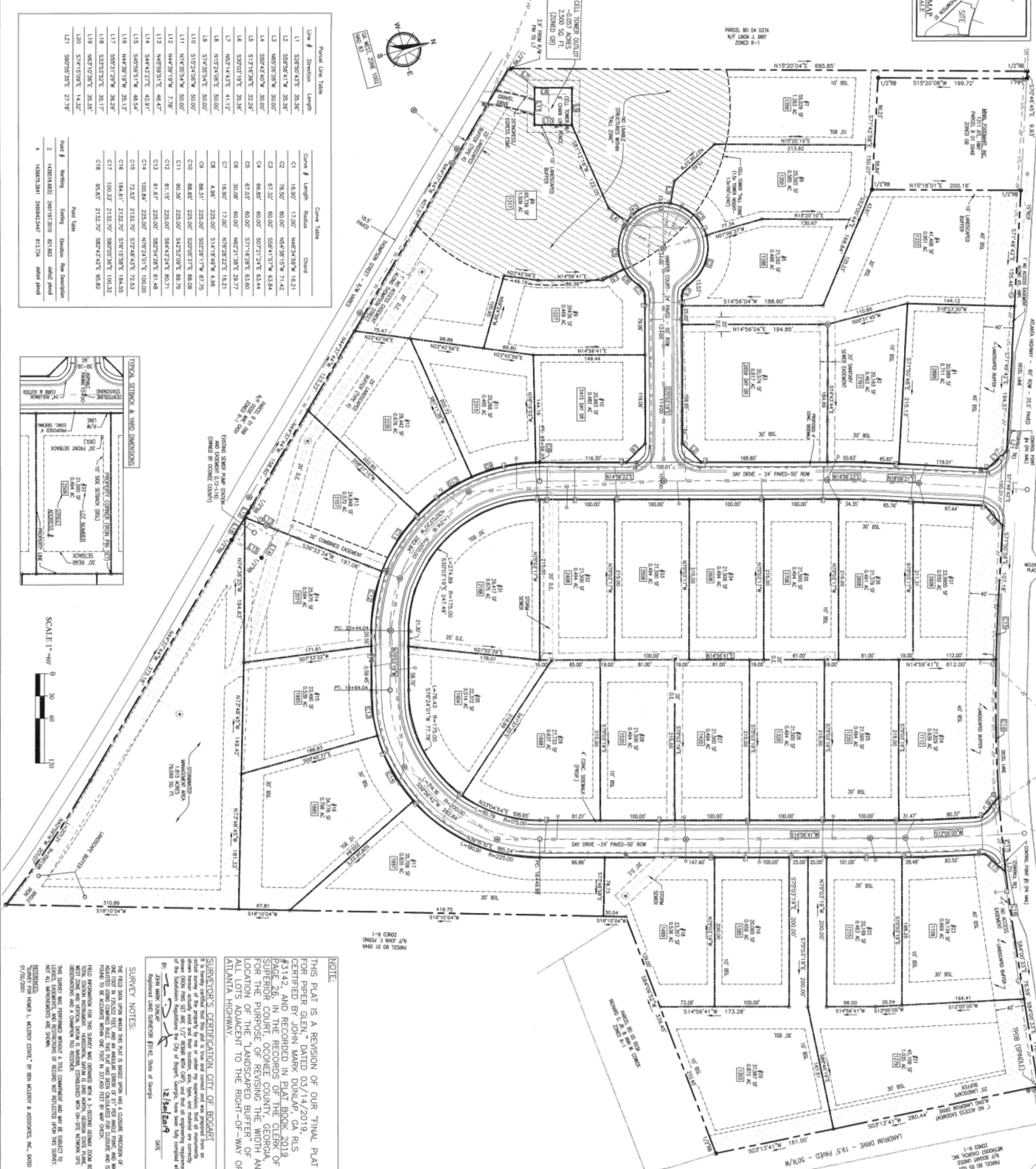


PROJECT DATA
 PROJECT NAME: GARDEN CITY COMMUNITY CENTER
 PROJECT ADDRESS: 1261 ATLANTA HIGHWAY, G.M.D. 240, OCONEE COUNTY, GA.
 PROJECT DATE: 12/30/2019
 PROJECT ENGINEER: [Signature]
 PROJECT ARCHITECT: [Signature]

OWNER CERTIFICATION
 I, the undersigned, being the owner of the land shown on this plat and whose name is entered in the public records of Oconee County, Georgia, do hereby certify that the plat was made from an authorized plat, and that the same has been approved by the Board of Commissioners of Oconee County, Georgia, and that the same is a true and correct copy of the original plat on file in the office of the County Clerk of Oconee County, Georgia.

FORMAL OFFER OF DEDICATION
 I, the undersigned, being the owner of the land shown on this plat and whose name is entered in the public records of Oconee County, Georgia, do hereby offer the land shown on this plat for public use as a community center, and do hereby certify that the same is a true and correct copy of the original plat on file in the office of the County Clerk of Oconee County, Georgia.

CERTIFICATION FOR FINAL PLAT APPROVAL (BOOKARY)
 I, the undersigned, being the County Clerk of Oconee County, Georgia, do hereby certify that the plat was made from an authorized plat, and that the same has been approved by the Board of Commissioners of Oconee County, Georgia, and that the same is a true and correct copy of the original plat on file in the office of the County Clerk of Oconee County, Georgia.



Parcel Line Table

Line #	Direction	Length	Course
L1	S 89° 50' 41" E	30.36'	C1
L2	S 89° 50' 41" E	30.36'	C2
L3	S 89° 50' 41" E	30.36'	C3
L4	S 89° 50' 41" E	30.36'	C4
L5	S 89° 50' 41" E	30.36'	C5
L6	S 89° 50' 41" E	30.36'	C6
L7	S 89° 50' 41" E	30.36'	C7
L8	S 89° 50' 41" E	30.36'	C8
L9	S 89° 50' 41" E	30.36'	C9
L10	S 89° 50' 41" E	30.36'	C10
L11	S 89° 50' 41" E	30.36'	C11
L12	S 89° 50' 41" E	30.36'	C12
L13	S 89° 50' 41" E	30.36'	C13
L14	S 89° 50' 41" E	30.36'	C14
L15	S 89° 50' 41" E	30.36'	C15
L16	S 89° 50' 41" E	30.36'	C16
L17	S 89° 50' 41" E	30.36'	C17
L18	S 89° 50' 41" E	30.36'	C18
L19	S 89° 50' 41" E	30.36'	C19
L20	S 89° 50' 41" E	30.36'	C20
L21	S 89° 50' 41" E	30.36'	C21
L22	S 89° 50' 41" E	30.36'	C22
L23	S 89° 50' 41" E	30.36'	C23
L24	S 89° 50' 41" E	30.36'	C24
L25	S 89° 50' 41" E	30.36'	C25
L26	S 89° 50' 41" E	30.36'	C26
L27	S 89° 50' 41" E	30.36'	C27
L28	S 89° 50' 41" E	30.36'	C28
L29	S 89° 50' 41" E	30.36'	C29
L30	S 89° 50' 41" E	30.36'	C30
L31	S 89° 50' 41" E	30.36'	C31
L32	S 89° 50' 41" E	30.36'	C32
L33	S 89° 50' 41" E	30.36'	C33
L34	S 89° 50' 41" E	30.36'	C34
L35	S 89° 50' 41" E	30.36'	C35
L36	S 89° 50' 41" E	30.36'	C36
L37	S 89° 50' 41" E	30.36'	C37
L38	S 89° 50' 41" E	30.36'	C38
L39	S 89° 50' 41" E	30.36'	C39
L40	S 89° 50' 41" E	30.36'	C40
L41	S 89° 50' 41" E	30.36'	C41
L42	S 89° 50' 41" E	30.36'	C42
L43	S 89° 50' 41" E	30.36'	C43
L44	S 89° 50' 41" E	30.36'	C44
L45	S 89° 50' 41" E	30.36'	C45
L46	S 89° 50' 41" E	30.36'	C46
L47	S 89° 50' 41" E	30.36'	C47
L48	S 89° 50' 41" E	30.36'	C48
L49	S 89° 50' 41" E	30.36'	C49
L50	S 89° 50' 41" E	30.36'	C50
L51	S 89° 50' 41" E	30.36'	C51
L52	S 89° 50' 41" E	30.36'	C52
L53	S 89° 50' 41" E	30.36'	C53
L54	S 89° 50' 41" E	30.36'	C54
L55	S 89° 50' 41" E	30.36'	C55
L56	S 89° 50' 41" E	30.36'	C56
L57	S 89° 50' 41" E	30.36'	C57
L58	S 89° 50' 41" E	30.36'	C58
L59	S 89° 50' 41" E	30.36'	C59
L60	S 89° 50' 41" E	30.36'	C60
L61	S 89° 50' 41" E	30.36'	C61
L62	S 89° 50' 41" E	30.36'	C62
L63	S 89° 50' 41" E	30.36'	C63
L64	S 89° 50' 41" E	30.36'	C64
L65	S 89° 50' 41" E	30.36'	C65
L66	S 89° 50' 41" E	30.36'	C66
L67	S 89° 50' 41" E	30.36'	C67
L68	S 89° 50' 41" E	30.36'	C68
L69	S 89° 50' 41" E	30.36'	C69
L70	S 89° 50' 41" E	30.36'	C70
L71	S 89° 50' 41" E	30.36'	C71
L72	S 89° 50' 41" E	30.36'	C72
L73	S 89° 50' 41" E	30.36'	C73
L74	S 89° 50' 41" E	30.36'	C74
L75	S 89° 50' 41" E	30.36'	C75
L76	S 89° 50' 41" E	30.36'	C76
L77	S 89° 50' 41" E	30.36'	C77
L78	S 89° 50' 41" E	30.36'	C78
L79	S 89° 50' 41" E	30.36'	C79
L80	S 89° 50' 41" E	30.36'	C80
L81	S 89° 50' 41" E	30.36'	C81
L82	S 89° 50' 41" E	30.36'	C82
L83	S 89° 50' 41" E	30.36'	C83
L84	S 89° 50' 41" E	30.36'	C84
L85	S 89° 50' 41" E	30.36'	C85
L86	S 89° 50' 41" E	30.36'	C86
L87	S 89° 50' 41" E	30.36'	C87
L88	S 89° 50' 41" E	30.36'	C88
L89	S 89° 50' 41" E	30.36'	C89
L90	S 89° 50' 41" E	30.36'	C90
L91	S 89° 50' 41" E	30.36'	C91
L92	S 89° 50' 41" E	30.36'	C92
L93	S 89° 50' 41" E	30.36'	C93
L94	S 89° 50' 41" E	30.36'	C94
L95	S 89° 50' 41" E	30.36'	C95
L96	S 89° 50' 41" E	30.36'	C96
L97	S 89° 50' 41" E	30.36'	C97
L98	S 89° 50' 41" E	30.36'	C98
L99	S 89° 50' 41" E	30.36'	C99
L100	S 89° 50' 41" E	30.36'	C100

FINAL PLAT FOR PIPER GLEN
 1261 ATLANTA HIGHWAY
 G.M.D. 240
 OCONEE COUNTY, GEORGIA
 LAST DAY OF FIELDWORK: 12/30/2019
 LAST REVISION OF PLAT: 12/30/2019

W&A Engineering
 12300/2019
 PROJECT # 1581

NOTES:
 1. THIS PLAT IS A REVISION OF OUR FINAL PLAT FOR PIPER GLEN, DATED 02/14/2019, BLS #1342, AND RECORDED IN PLAT BOOK 2019, PAGE 26, IN THE RECORDS OF THE CLERK OF SUPERIOR COURT, OCONEE COUNTY, GEORGIA, FOR THE PURPOSE OF REVISIONS TO THE WIDTH AND ALL LOTS ADJACENT TO THE RIGHT-OF-WAY OF ATLANTA HIGHWAY.

SURVEY NOTES:
 THE FIELD DATA FROM WHICH THIS PLAT IS MADE WERE OBTAINED BY A LICENSED PROFESSIONAL SURVEYOR AND ARE ACCURATE TO THE BEST OF HIS KNOWLEDGE AND BELIEF. THE SURVEYOR HAS CONDUCTED A VISUAL INSPECTION OF THE PROPERTY AND HAS FOUND THAT THE INFORMATION CONTAINED HEREON IS A TRUE AND CORRECT REPRESENTATION OF THE FACTS AS FOUND IN THE FIELD. THE SURVEYOR HAS CONDUCTED A VISUAL INSPECTION OF THE PROPERTY AND HAS FOUND THAT THE INFORMATION CONTAINED HEREON IS A TRUE AND CORRECT REPRESENTATION OF THE FACTS AS FOUND IN THE FIELD.