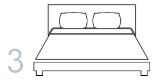




9 Fernwood Road

Maplewood, NJ



www.9fernwoodroad.com



VICTORIA
CARTER
GROUP



Bright & Open

Situated in one of Essex County's most sought-after residential communities, this tastefully updated eight-room colonial – with three bedrooms, 2.1 baths and finished lower level – offers the very best in contemporary suburban living.

A warm entry vestibule welcomes visitors to this fine home. Inside, a broad archway opens from the spacious living room to the dining room for a comfortable flow that brightens and expands both areas. A barn door opens from the living room to the den, a sunny retreat with four large windows overlooking the front lawn. All three rooms share a polished hardwood floor.

The modern eat-in kitchen features Shaker cabinets with maintenance-free quartz counter tops and a gleaming tile backsplash. A peninsula counter provides casual seating. The matching suite of Frigidaire appliances is composed of a five-burner gas range with exhaust hood, dishwasher and refrigerator with cafe doors and water and ice dispenser. Egress to the raised composite deck and fenced back yard – with hot tub and detached garage – makes for an outdoor oasis ideal for entertaining. A hardwood floor, undermounted stainless steel sink and recessed lighting provide all the right finishing touches.

The adjacent powder room has a hardwood floor, vanity with vessel sink, wall mirror and recessed lighting

Situated on the second level, the primary bedroom includes a hardwood floor, two closets and a lighted ceiling fan. Windows on two walls provide comfortable cross breezes. Each of the two additional bedrooms features a hardwood floor, closet and overhead light fixture.

The full hall bath is equipped with a tile floor, shower-over-tub with subway tile surround, vanity with integrated sink; wall mirror and light bar.

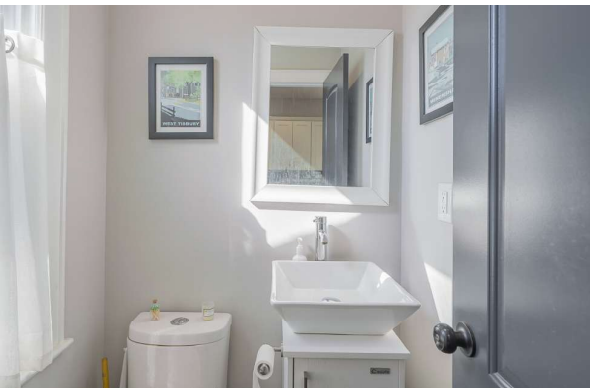
A stairwell running to the lower level from the kitchen opens to a spacious recreation room with recessed lighting and laundry area with Whirlpool washer and dryer and utility sink.

A second full bath presents a walk-in shower, vanity with undermounted sink, wall mirror and recessed lighting.

A storage/utility room with sump pump and overhead lighting completes this level.







Highlights

GENERAL

- Warm and inviting, eight-room, side-hall Colonial in a thriving residential community
- Three bedrooms
- Two full baths; one half-bath
- Gourmet eat-in kitchen
- Neutral palette throughout
- Finished lower level with French drain
- Elevated rear deck
- Hot tub
- Detached one-car garage
- Fully fenced back yard
- Only one block away from Milo S. Borden Park with playground and soccer fields
- Minutes from town, schools, restaurants, shopping and Midtown Direct commuter train service into Manhattan

FIRST LEVEL

- Entry vestibule: hardwood floor; overhead lighting; two double-hung windows, side; doorway to living room
- Living room: hardwood floor; crown moulding; two double-hung windows, side; barn door to den; archway to dining room; open doorway to second level; doorway to entry vestibule
- Den: hardwood floor; three double-hung windows, front; double-hung window, side; barn door to living room
- Dining room: hardwood floor; crown moulding; overhead light fixture; two double-hung windows, side; double-hung window, rear; open doorway to kitchen; archway to living room
- Eat-in kitchen: hardwood floor; Shaker cabinets with crown moulding; quartz counter tops; tile backsplash; peninsula counter; Frigidaire five-burner gas range with exhaust hood; Frigidaire dishwasher; Frigidaire refrigerator with cafe doors and water and ice dispenser; undermounted stainless steel sink; recessed lighting; two double-hung windows, side; open doorways to dining room and living room;

doorways to powder room and stairs to lower level; egress to rear deck

- Powder room: hardwood floor; vanity with vessel sink; wall mirror; recessed lighting; double-hung window, rear

SECOND LEVEL

- Primary bedroom: hardwood floor; two closets; lighted ceiling fan; double-hung window, front; double-hung window, side
- Bedroom two: hardwood floor; closet; overhead light fixture; double-hung window, side; double-hung window, rear
- Bedroom three: hardwood floor; closet; overhead light fixture; double-hung window, front
- Full hall bath: tile floor; shower-over-tub with subway tile surround; vanity with integrated sink; wall mirror; light bar; double-hung window, rear
- Center foyer: hardwood floor; overhead light fixture; double-hung window, side

LOWER LEVEL

- Recreation room: recessed lighting; casement window, side
- Laundry area: tile floor; Whirlpool washer and dryer; utility sink
- Full bath: walk-in shower; vanity with undermounted sink; wall mirror; recessed lighting; casement window, side
- Storage/utility room: overhead light fixture; sump pump; French drain

EXTERIOR

- Vinyl siding
- Elevated composite deck: access to kitchen
- Hot tub
- One-car detached garage
- Asphalt driveway
- Deep and level back yard with privacy fencing
- Professionally landscaped: established lawns; mature shade trees; decorative shrubbery

IMPROVEMENTS

- Installed french drain and sump pump – 2024
- Constructed new Composite deck – 2023
- Installed new overhead light fixture in dining room – 2023
- Installed lighted ceiling fan in primary bedroom – 2023
- Installed new hot water heater – 2022
- Converted from powder room to full bath on lower level – 2021
- Fenced in backyard – 2020
- Installed hot tub – 2020
- Newly landscaped back and front yards – 2020
- Updated electrical service and added panel in garage to charge electric vehicle – 2020

2025 ASSESSMENTS/TAXES

- Land: \$289,000
- Improvements: \$307,800

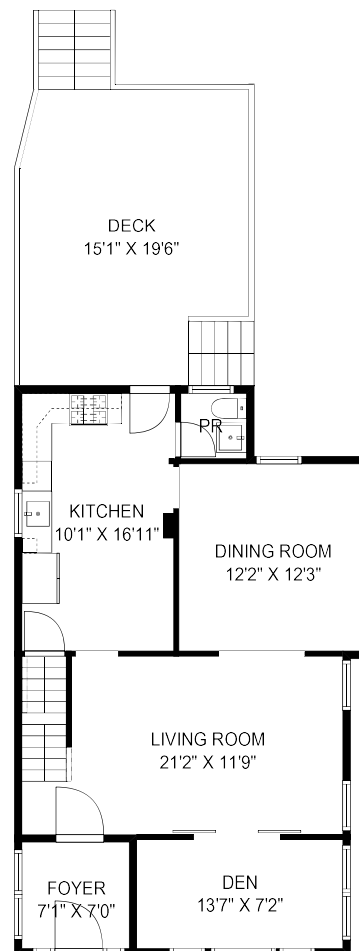
• Total: \$596,800

• 2025 taxes: \$14,329

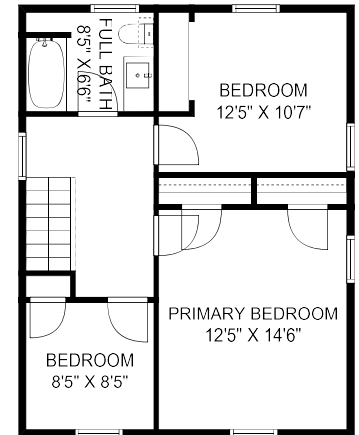
COMMUNITY

Renowned for its Village, a collection of quaint shops and restaurants, Maplewood is a thriving community where residents enjoy fine dining, local shopping and exceptional recreational and cultural facilities. Named by New York Magazine as one of the “Top Ten Affordable Suburbs in the New York Metro Area,” Maplewood combines a small-town life-style with city conveniences, and yet is only a short commute via Midtown Direct trains into New York City and fifteen miles from Newark Liberty International Airport..

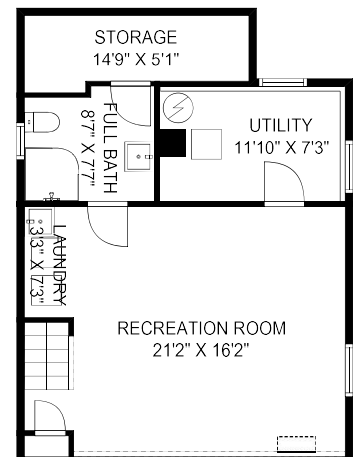
Floor Plan



FIRST LEVEL



SECOND LEVEL



LOWER LEVEL

NOT TO SCALE: Floor plans are for illustration purposes only.

Room positions and dimensions are approximate and should be independently measured for accuracy.

