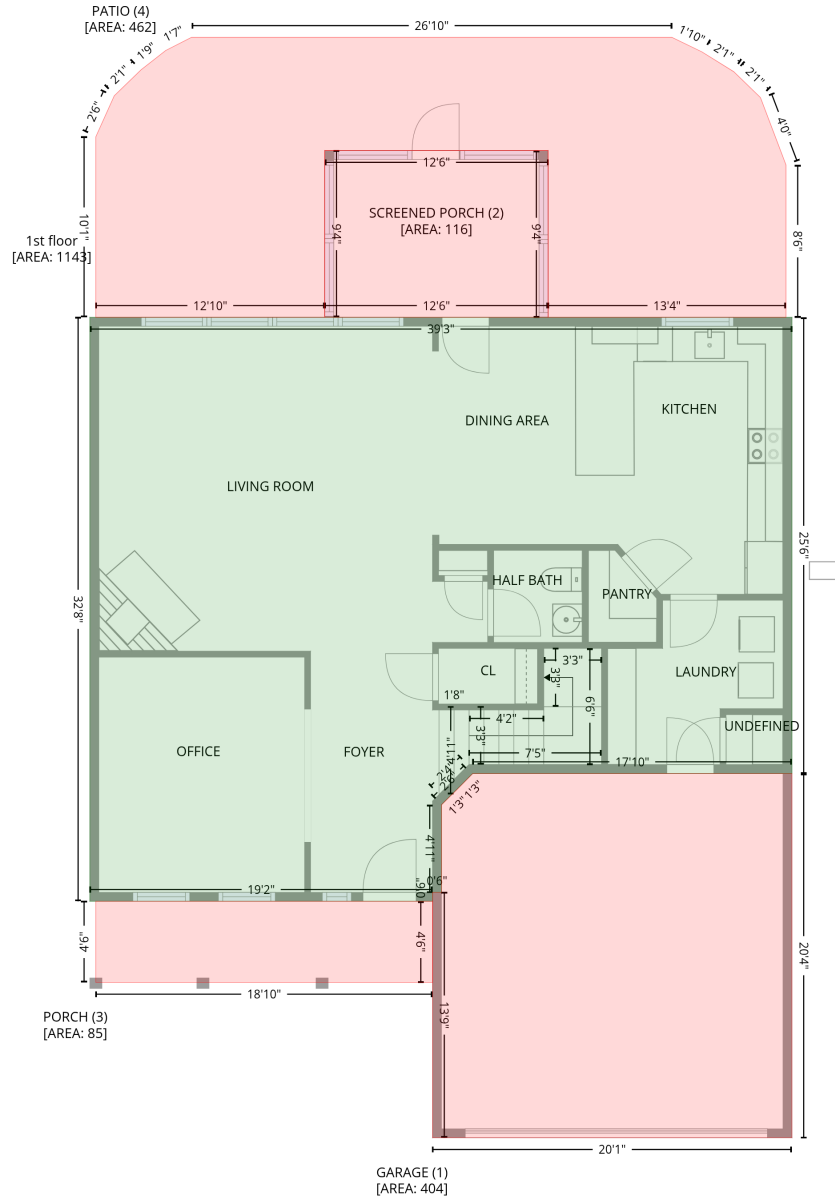


1403 Melissa Oaks Lane, Austin, Travis County, Texas, United States, 78744

Gross Living Area: 2369 sq. ft

Level 1



Space	Area (sq. ft)	Calculation
1st floor (Living area)	1143	Coordinate Polygon Area Algorithm using inches $-((505.7 + 505.7) * (124.7 - 430.8) + (505.7 + 291.4) * (430.8 - 430.8) + (291.4 + 270.5) * (430.8 - 451.7) + (270.5 + 270.5) * (451.7 - 510.5) + (270.5 + 264.5) * (510.5 - 510.5) + (264.5 + 264.5) * (510.5 - 516.5) + (264.5 + 34.6) * (516.5 - 516.5) + (34.6 + 34.6) * (516.5 - 124.7) + (34.6 + 505.7) * (124.7 - 124.7)) * 0.5 * 0.00694$

1403 Melissa Oaks Lane, Austin, Travis County, Texas, United States, 78744

Gross Living Area: 2369 sq. ft

Level 1

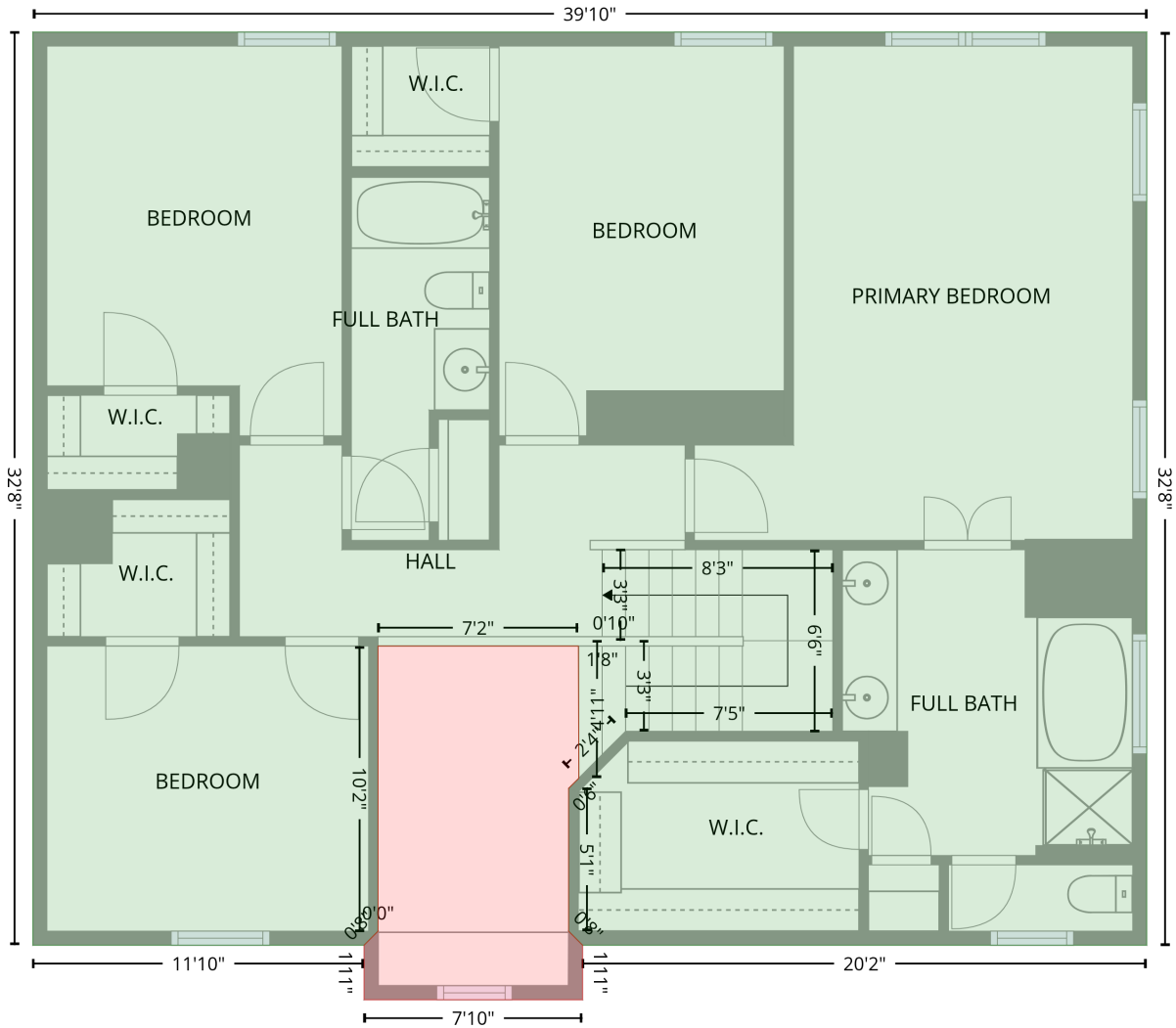
Space	Area (sq. ft)	Calculation <small>Coordinate Polygon Area Algorithm using inches</small>
GARAGE (Non-living area)	404	$-\left((505.7 + 505.7) * (430.8 - 675.2) + (505.7 + 264.5) * (675.2 - 675.2) + (264.5 + 264.5) * (675.2 - 510.5) + (264.5 + 270.5) * (510.5 - 510.5) + (270.5 + 270.5) * (510.5 - 451.7) + (270.5 + 281.1) * (451.7 - 441.3) + (281.1 + 291.4) * (441.3 - 430.8) + (291.4 + 505.7) * (430.8 - 430.8)\right) * 0.5 * 0.00694$
SCREENED PORCH (Non-living area)	116	$-\left((342 + 342) * (12.8 - 124.7) + (342 + 192.2) * (124.7 - 124.7) + (192.2 + 192.2) * (124.7 - 12.8) + (192.2 + 342) * (12.8 - 12.8)\right) * 0.5 * 0.00694$
PORCH (Non-living area)	85	$-\left((264.5 + 264.5) * (516.5 - 571) + (264.5 + 38.6) * (571 - 571) + (38.6 + 38.6) * (571 - 516.5) + (38.6 + 264.5) * (516.5 - 516.5)\right) * 0.5 * 0.00694$
PATIO (Non-living area)	462	$-\left((425.1 + 445.2) * (-63.1 - -53.5) + (445.2 + 466.6) * (-53.5 - -40.1) + (466.6 + 484.5) * (-40.1 - -22.8) + (484.5 + 501.7) * (-22.8 - 22.4) + (501.7 + 501.7) * (22.4 - 124.7) + (501.7 + 342) * (124.7 - 124.7) + (342 + 342) * (124.7 - 12.8) + (342 + 192.2) * (12.8 - 12.8) + (192.2 + 192.2) * (12.8 - 124.7) + (192.2 + 38.6) * (124.7 - 124.7) + (38.6 + 38.6) * (124.7 - 3.5) + (38.6 + 51) * (3.5 - -24) + (51 + 68.9) * (-24 - -41.4) + (68.9 + 85.5) * (-41.4 - -54.4) + (85.5 + 102.8) * (-54.4 - -63.1) + (102.8 + 425.1) * (-63.1 - -63.1)\right) * 0.5 * 0.00694$

1403 Melissa Oaks Lane, Austin, Travis County, Texas, United States, 78744

Gross Living Area: 2369 sq. ft

Level 2

2nd floor
[AREA: 1226]



OPEN TO BELOW (1)
[AREA: 90]

Space	Area (sq. ft)	Calculation <small>Coordinate Polygon Area Algorithm using inches</small>
2nd floor (Living area)	1226	$ \begin{aligned} & -((512.6 + 512.6) * (124.7 - 516.5) + (512.6 + 270.5) * (516.5 - 516.5) + (270.5 + 264.5) * (516.5 - \\ & 510.5) + (264.5 + 264.5) * (510.5 - 449.3) + (264.5 + 268.9) * (449.3 - 444.9) + (268.9 + 268.7) * \\ & (444.9 - 388.1) + (268.7 + 182.7) * (388.1 - 388.1) + (182.7 + 182.7) * (388.1 - 510.5) + (182.7 + \\ & 182.7) * (510.5 - 510.5) + (182.7 + 176.7) * (510.5 - 516.5) + (176.7 + 34.6) * (516.5 - 516.5) + \\ & (34.6 + 34.6) * (516.5 - 124.7) + (34.6 + 512.6) * (124.7 - 124.7)) * 0.5 * 0.00694 \end{aligned} $

1403 Melissa Oaks Lane, Austin, Travis County, Texas, United States, 78744

Gross Living Area: 2369 sq. ft

Level 2

Space	Area (sq. ft)	Calculation <small>Coordinate Polygon Area Algorithm using inches</small>
OPEN TO BELOW (Non-living area)	90	$-\left((268.7 + 268.9) * (388.1 - 444.9) + (268.9 + 264.5) * (444.9 - 449.3) + (264.5 + 264.5) * (449.3 - 510.5) + (264.5 + 270.5) * (510.5 - 516.5) + (270.5 + 270.5) * (516.5 - 540) + (270.5 + 176.7) * (540 - 540) + (176.7 + 176.7) * (540 - 516.5) + (176.7 + 182.7) * (516.5 - 510.5) + (182.7 + 182.7) * (510.5 - 388.1) + (182.7 + 268.7) * (388.1 - 388.1)\right) * 0.5 * 0.00694$