



19 Pine Street

West Orange, NJ



3

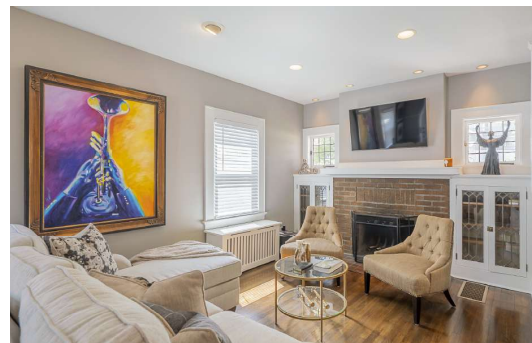
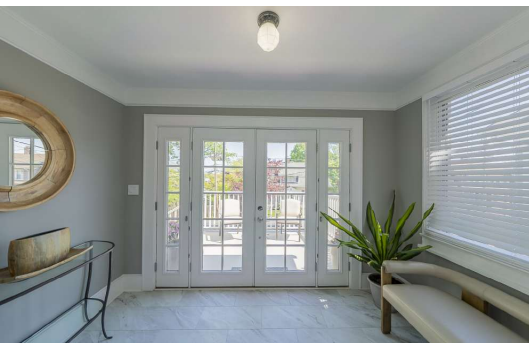


1.1

www.19pinestreet.com



VICTORIA
CARTER
GROUP





Turnkey Living

An open front porch welcomes you to this beautifully updated, three-bedroom home. A double French door with floor-to-ceiling sidelights opens to a spacious entry vestibule with tile floor, crown moulding, overhead light fixture and French door leading to the living room.

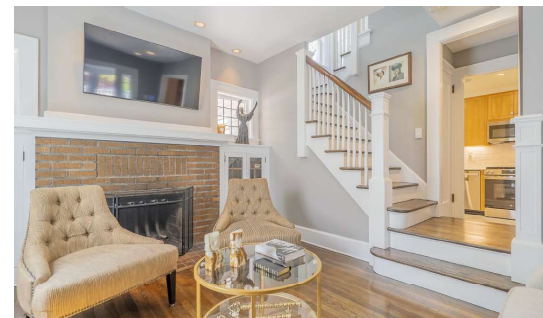
Framed by a pair of leaded glass windows and two sets of enclosed bookshelves with leaded glass doors, a classic wood-burning fireplace serves as the focal point of the formal living room. A broad archway opens to the dining room brightening and expanding both areas. Hardwood stairs, with a pass-through to kitchen, run to the second level. A hardwood floor, coat closet, recessed lighting and two large windows with side exposure finish the room.



The dining room features a hardwood floor, contemporary chandelier and window with side exposure. A double French door accesses the office/sunroom, and an open doorway leads to the kitchen.



Equally well suited for use as a place of quiet relaxation or a day spent working from home, the office/sunroom includes a hardwood floor, crown moulding and six tall casement windows set in two walls.



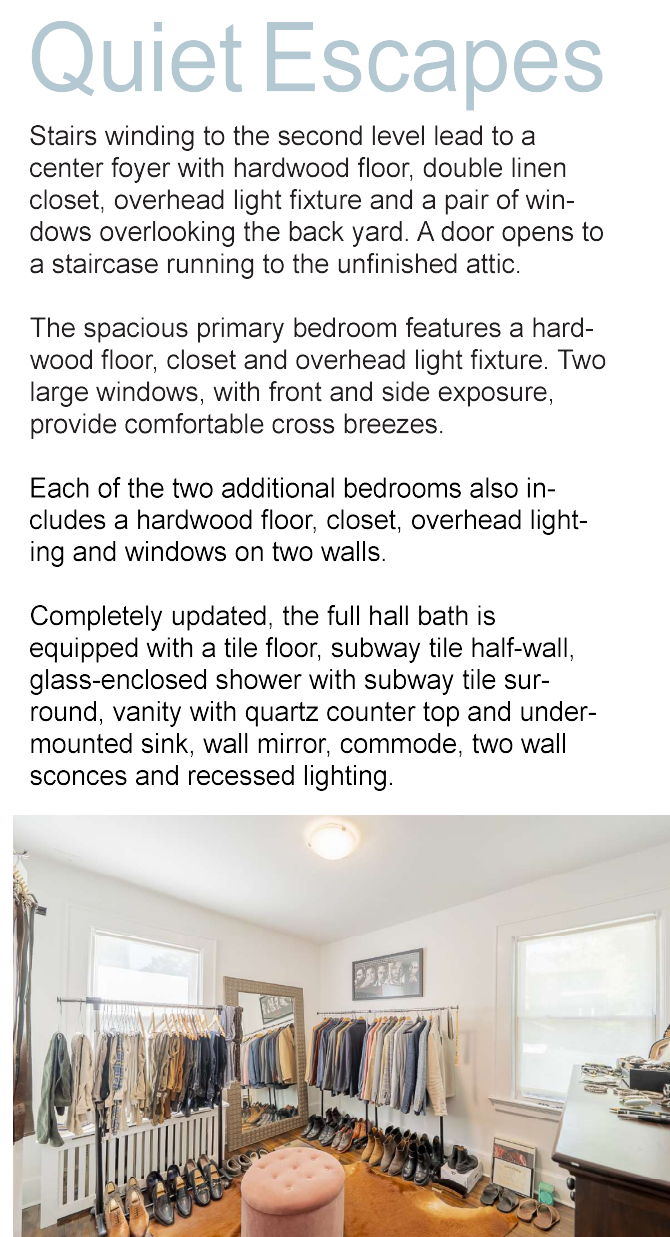


Inviting Warmth

Thoughtfully remodeled so as to please even the most dedicated home chef, the gourmet kitchen features underlit Shaker cabinets with maintenance-free quartz counter tops and a ceramic tile backsplash. A pantry closet provides abundant additional space for storage. Sited for convenience, stainless steel appliances include a General Electric four-burner gas range with griddle, built-in General Electric microwave, General Electric dishwasher and LG refrigerator with cafe doors and freezer drawer. The kitchen is open to the breakfast room, and open doorways access the dining room, rear vestibule and stairs to the second level with a pass-through to the living room. A hardwood floor, recessed lighting and undermounted stainless steel sink with pendant light fixture above finish the room.

A tile floor, vaulted ceiling and lighted ceiling fan combine with five large windows spanning two exterior walls to make the sunny breakfast room the ideal spot to begin your day.

Situated off the kitchen, the rear vestibule – with tile floor, beadboard paneling and overhead light fixture – provides convenient access to the composite deck and fully fenced and very private back yard,



Quiet Escapes

Stairs winding to the second level lead to a center foyer with hardwood floor, double linen closet, overhead light fixture and a pair of windows overlooking the back yard. A door opens to a staircase running to the unfinished attic.

The spacious primary bedroom features a hardwood floor, closet and overhead light fixture. Two large windows, with front and side exposure, provide comfortable cross breezes.

Each of the two additional bedrooms also includes a hardwood floor, closet, overhead lighting and windows on two walls.

Completely updated, the full hall bath is equipped with a tile floor, subway tile half-wall, glass-enclosed shower with subway tile surround, vanity with quartz counter top and under-mounted sink, wall mirror, commode, two wall sconces and recessed lighting.



Lower Level

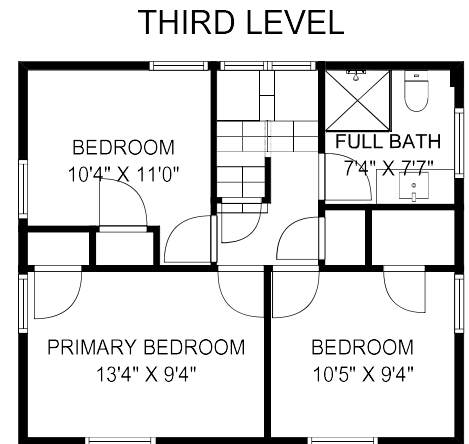
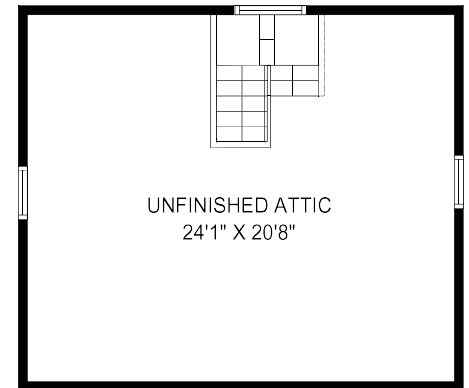
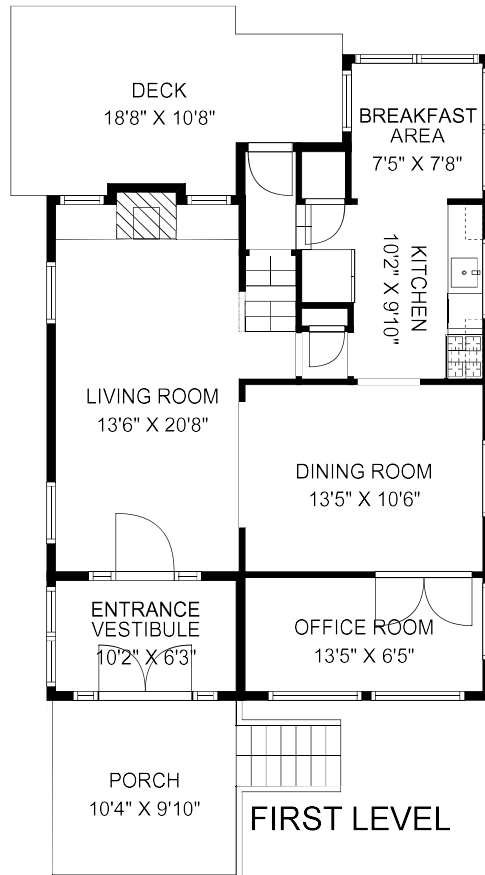
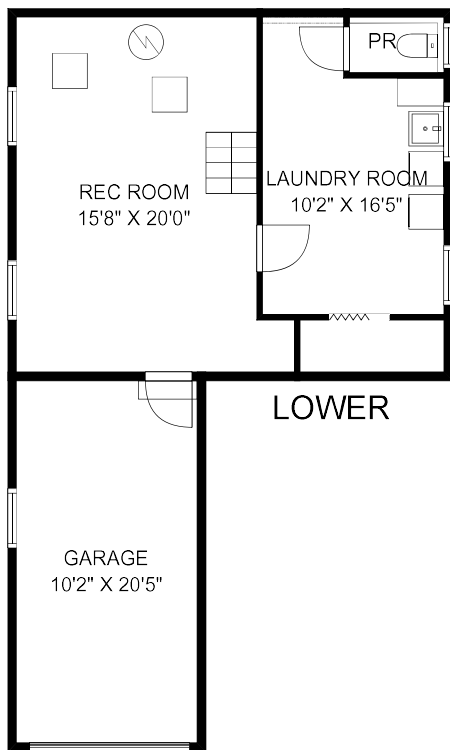
Situated on the lower level and spacious enough to include multiple activity areas or conversation groupings, the partially finished recreation room features a concrete floor, overhead lighting and two casement windows.

The laundry/storage room is equipped with a washer and dryer, utility sink, walk-in closet, tile floor and overhead light fixture.

Located off the laundry room, the updated powder room includes a tile floor, overhead light fixture and commode.

A heated one-car garage completes this level.

Floor Plans



NOT TO SCALE: Floor plans are for illustration purposes only. Room positions and dimensions are approximate and should be independently measured for accuracy.

Highlights

GENERAL

- Fully renovated, nine-room Colonial in a thriving and diverse residential community
- Three bedrooms
- One full bath; one half-bath
- Recently updated gourmet kitchen
- Wood-burning fireplace in living room
- Partially finished lower level
- Two-zone central air-conditioning
- Integrated sound system throughout
- Integrated security system with exterior cameras
- Neutral palette throughout
- Slate patio
- Attached one-car garage
- Fenced back yard
- Minutes from town, parks, schools, restaurants, shopping and Midtown Direct commuter train service into Manhattan

FIRST LEVEL

- Entry vestibule: double French door with floor-to-ceiling sidelights; tile floor; crown moulding; overhead light fixture; two casement windows, side; French door, with floor-to-ceiling sidelights, to living room
- Living room: hardwood floor; wood-burning fireplace with tile hearth; enclosed bookshelves with leaded glass doors; coat closet; recessed lighting; two double-hung windows, side; two leaded glass casement windows, rear; archway to dining room; hardwood stairs, with pass-through to kitchen, to second level
- Dining room: hardwood floor; contemporary chandelier; double-hung window, side; open doorway to kitchen; double French door to office; archway to living room
- Office: hardwood floor; crown moulding; four casement windows, front; two casement windows, side
- Kitchen: tile floor; underlit Shaker cabinets; quartz counter tops; tile backsplash; stainless steel appliances – General Electric four-burner gas range with griddle, built-in General Electric microwave, General Electric dishwasher and LG refrigerator with cafe doors and freezer drawer; undermounted stainless steel sink; pantry closet; crown moulding; pendant light fixture over sink;

- recessed lighting; double-hung window, side; open to breakfast room; open doorways to dining room and rear vestibule; stairs, with pass-through to kitchen, to second level
- Breakfast room: tile floor; vaulted ceiling; lighted ceiling fan; three double-hung windows, sides, two double-hung windows, rear; open to kitchen
- Rear vestibule: tile floor; bead-board paneling; overhead light fixture; open doorway to kitchen; stairs to lower level; egress to rear patio

SECOND LEVEL

- Center foyer: hardwood floor; double linen closet; overhead light fixture; two double-hung windows, rear; door to stairs to unfinished attic
- Primary bedroom: hardwood floor. closet; overhead light fixture; double-hung window, front; double-hung window, side
- Bedroom two: hardwood floor; closet; overhead light fixture; double-hung window, side; double-hung window, rear
- Bedroom three: hardwood floor; closet; overhead light fixture; double-hung window, side; double-hung window, rear
- Full hall bath: tile floor; subway tile half-wall; glass-enclosed shower with subway tile surround; vanity with quartz counter top and undermounted sink; wall mirror; commode; two wall sconces; recessed lighting; double-hung window, side

LOWER LEVEL

- Recreation room: concrete floor; overhead lighting; two casement windows, side; doors to laundry/storage room and garage
- Laundry/storage room: tile floor; washer and dryer; utility sink; closet; overhead light fixture; double-hung window, side; casement window, side
- Powder room: tile floor; overhead light fixture; commode
- Heated one-car garage: door to recreation room

EXTERIOR

- Vinyl siding
- Paver driveway
- Composite rear deck
- Slate rear patio
- Fenced back yard

- Professionally landscaped: established lawns; mature shade trees; decorative shrubbery

IMPROVEMENTS

- Installed new appliances and hardware in kitchen – 2024-2025
- Installed new quartz counter tops and tile backsplash in kitchen – 2024-2025
- Installed under-cabinet lighting in kitchen – 2024-2025
- Installed new glass-enclosed tub, vanity, counter top, mirror, light fixtures and commode in full bath – 2024
- Installed new mirror and light fixture in powder room – 2024
- Installed new 200V electrical panel – 2024
- Installed new two-zone central air-conditioning system with Smart app – 2024
- Installed new lighting throughout – 2024
- Refinished/installed new hardwood floors throughout – 2024
- Partially finished basement – 2024
- Heated garage – 2024
- Installed Smart thermostats with remote app – 2024
- Installed whole-house audio system with Bluetooth – 2024

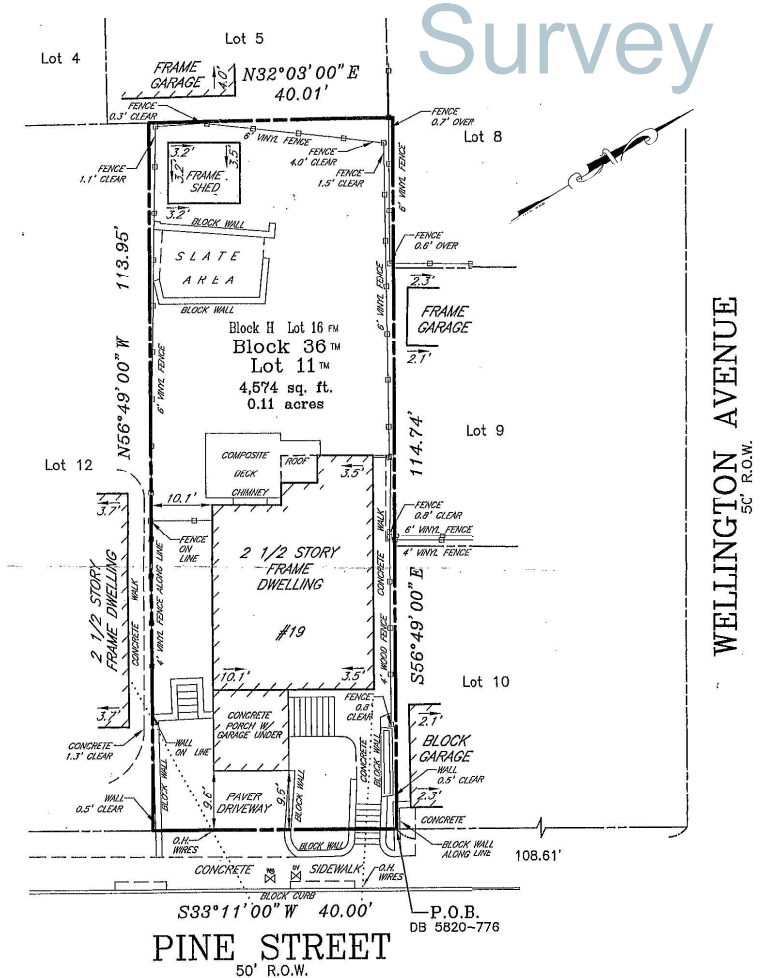
- Installed whole-house exterior camera system with remote app – 2024
- Installed ADT security system with remote app – 2024
- Installed new roof – 2021

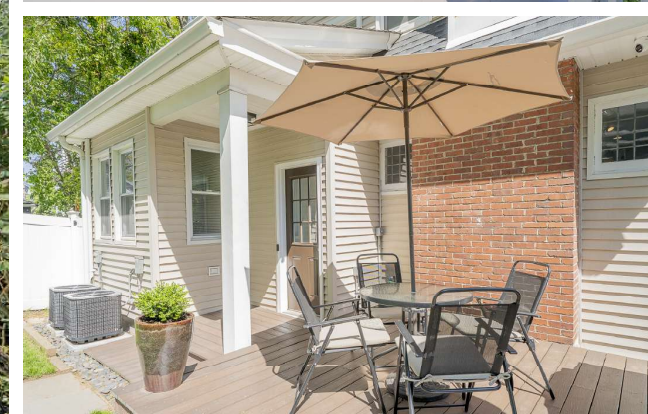
ASSESSMENTS/TAXES

- Land: \$249,400
- Improvements: \$325,800
- Total: \$575,200
- 2025 taxes: \$15,110

AN IDEAL LOCATION

West Orange is a thriving and diverse community known for its fine homes, excellent schools and vibrant business district. Among West Orange's most popular attractions are the Turtle Back Zoo, Thomas Edison National Historical Park, South Mountain Reservation (the largest park land in Essex County) and Eagle Rock Reservation with a spectacular view of New York City's famed skyline. Located only 12 miles from Manhattan and 20 minutes from Newark Liberty Airport, West Orange also is convenient to major highways including the Garden State Parkway, New Jersey Turnpike and Interstate Route 280.





Victoria Carter
Broker/Sales Associate

Cell: 973-220-3050

Email: Victoria@VictoriaCarter.com

www.victoriacarter.com

Weichert, Realtors • Short Hills Office



Weichert