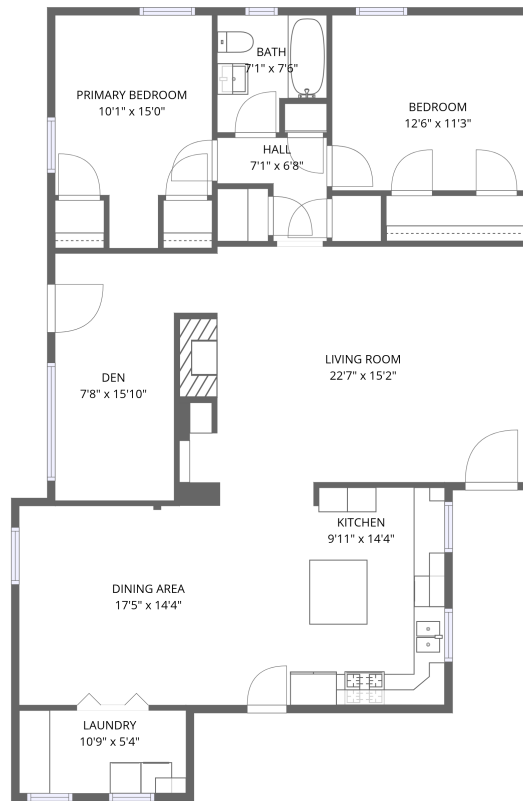


Home data report

**2245 East Osborn Road, Camelback East, Phoenix, Maricopa County, Arizona, United States, 85016**



1st floor

**Total Area: 1359 sq. ft**


1st Floor: 1359 sq. ft

Excluded: Walls: 84 sq. ft

## Property summary

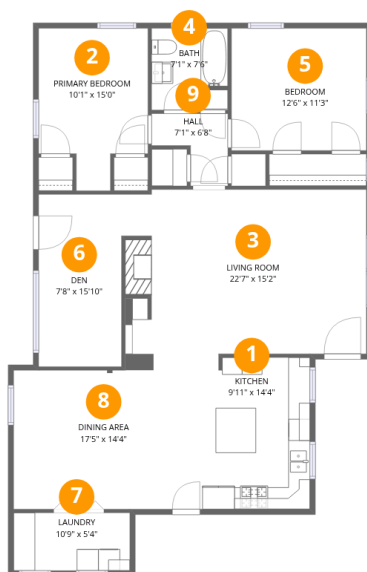
 **1** Floors

 **2** Bedrooms

 **1** Bathrooms

## Home data report

2245 East Osborn Road, Camelback East, Phoenix, Maricopa County, Arizona, United States, 85016



## Room dimensions

Floor 1

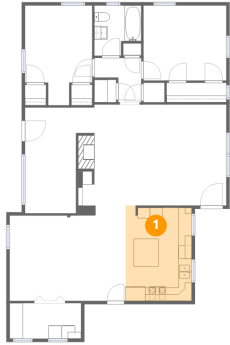
Total:1359sqft Excluded: 0sqft

#		Dimensions	sqft	Counted as living area
1	Kitchen	9'11" x 14'4"	142 sq. ft	Yes
2	Primary Bedroom	10'1" x 15'0"	151 sq. ft	Yes
3	Living Room	22'7" x 15'2"	343 sq. ft	Yes
4	Bath	7'1" x 7'6"	53 sq. ft	Yes
5	Bedroom	12'6" x 11'3"	140 sq. ft	Yes
6	Den	7'8" x 15'10"	122 sq. ft	Yes
7	Laundry	10'9" x 5'4"	57 sq. ft	Yes
8	Dining Area	17'5" x 14'4"	250 sq. ft	Yes
9	Hall	7'1" x 6'8"	47 sq. ft	Yes

2245 East Osborn Road, Camelback East, Phoenix, Maricopa County, Arizona, United States, 85016

**1** Floor 1 - Kitchen

---

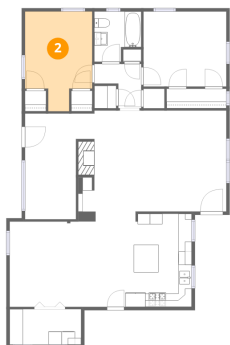


Dimensions: 9'11" x 14'4"  
Area: 142 sq. ft  
Counted as living area: Yes

Heated: Yes  
Finished: Yes  
Enclosed: Yes  
Contiguous: Yes  
Permitted: Yes  
Wet space: No  
Addition: No  
Conversion: No

**2** Floor 1 - Primary Bedroom

---

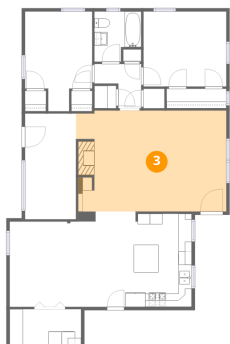


Dimensions: 10'1" x 15'0"  
Area: 151 sq. ft  
Counted as living area: Yes

Heated: Yes  
Finished: Yes  
Enclosed: Yes  
Contiguous: Yes  
Permitted: Yes  
Wet space: No  
Addition: No  
Conversion: No

2245 East Osborn Road, Camelback East, Phoenix, Maricopa County, Arizona, United States, 85016

### 3 Floor 1 - Living Room



Dimensions: 22'7" x 15'2"  
Area: 343 sq. ft  
Counted as living area: Yes

Heated: Yes  
Finished: Yes  
Enclosed: Yes  
Contiguous: Yes  
Permitted: Yes  
Wet space: No  
Addition: No  
Conversion: No

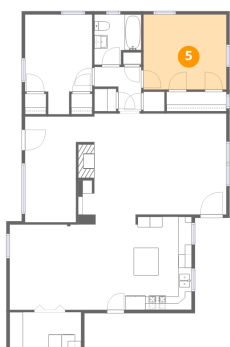
### 4 Floor 1 - Bath



Dimensions: 7'1" x 7'6"  
Area: 53 sq. ft  
Counted as living area: Yes

Heated: Yes  
Finished: Yes  
Enclosed: Yes  
Contiguous: Yes  
Permitted: Yes  
Wet space: Yes  
Addition: No  
Conversion: No

### 5 Floor 1 - Bedroom



Dimensions: 12'6" x 11'3"  
Area: 140 sq. ft  
Counted as living area: Yes

Heated: Yes  
Finished: Yes  
Enclosed: Yes  
Contiguous: Yes  
Permitted: Yes  
Wet space: No  
Addition: No  
Conversion: No

2245 East Osborn Road, Camelback East, Phoenix, Maricopa County, Arizona, United States, 85016

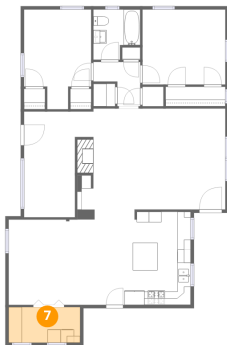
**6** Floor 1 - Den



Dimensions: 7'8" x 15'10"  
Area: 122 sq. ft  
Counted as living area: Yes

Heated: Yes  
Finished: Yes  
Enclosed: Yes  
Contiguous: Yes  
Permitted: Yes  
Wet space: No  
Addition: No  
Conversion: No

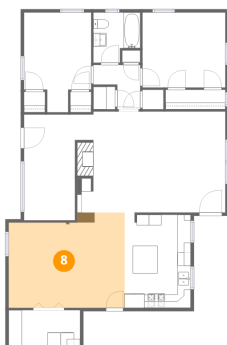
**7** Floor 1 - Laundry



Dimensions: 10'9" x 5'4"  
Area: 57 sq. ft  
Counted as living area: Yes

Heated: Yes  
Finished: Yes  
Enclosed: Yes  
Contiguous: Yes  
Permitted: Yes  
Wet space: No  
Addition: No  
Conversion: No

**8** Floor 1 - Dining Area

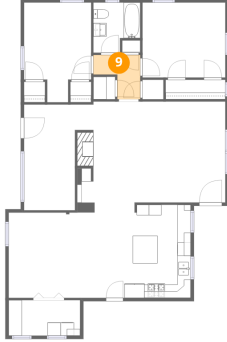


Dimensions: 17'5" x 14'4"  
Area: 250 sq. ft  
Counted as living area: Yes

Heated: Yes  
Finished: Yes  
Enclosed: Yes  
Contiguous: Yes  
Permitted: Yes  
Wet space: No  
Addition: No  
Conversion: No

2245 East Osborn Road, Camelback East, Phoenix, Maricopa County, Arizona, United States, 85016

9 Floor 1 - Hall



Dimensions: 7'1" x 6'8"  
Area: 47 sq. ft  
Counted as living area: Yes

Heated: Yes  
Finished: Yes  
Enclosed: Yes  
Contiguous: Yes  
Permitted: Yes  
Wet space: No  
Addition: No  
Conversion: No