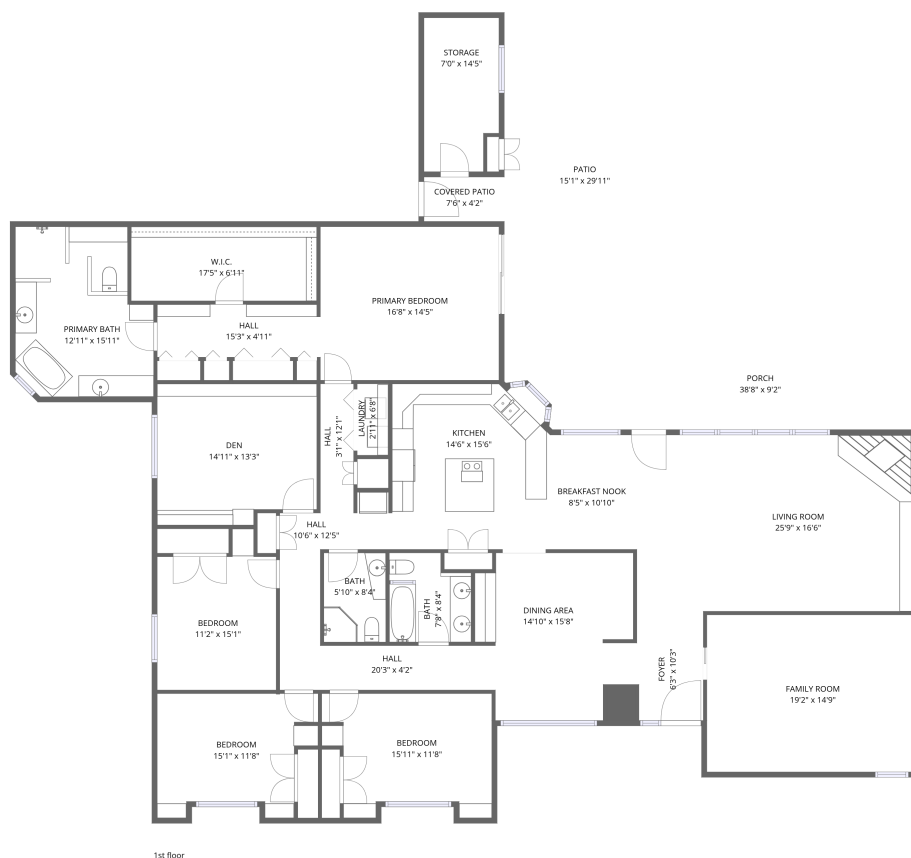


Home data report

2140 East Solano Drive, Camelback East, Phoenix, Maricopa County, Arizona, United States, 85016



Total Area: 3093 sq. ft

1st Floor: 3093 sq. ft

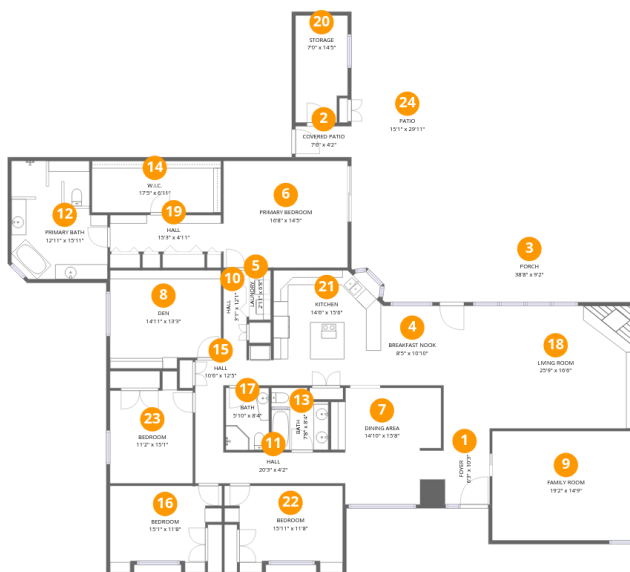
Excluded: Storage 97 sq. ft, Porch 339 sq. ft, Covered patio 31 sq. ft, Patio 451 sq. ft, Undefined 4 sq. ft, Embedded window 7 sq. ft, Walls: 171 sq. ft

Property summary



Home data report

2140 East Solano Drive, Camelback East, Phoenix, Maricopa County, Arizona, United States, 85016



Room dimensions

Floor 1

Total:3093sqft Excluded: 929sqft

#		Dimensions	sqft	Counted as living area
1	Foyer	6'3" x 10'3"	64 sq. ft	Yes
2	Covered Patio	7'6" x 4'2"	31 sq. ft	No
3	Porch	38'8" x 9'2"	353 sq. ft	No
4	Breakfast Nook	8'5" x 10'10"	92 sq. ft	Yes
5	Laundry	2'11" x 6'8"	20 sq. ft	Yes
6	Primary Bedroom	16'8" x 14'5"	240 sq. ft	Yes
7	Dining Area	14'10" x 15'8"	233 sq. ft	Yes
8	Den	14'11" x 13'3"	198 sq. ft	Yes
9	Family Room	19'2" x 14'9"	282 sq. ft	Yes
10	Hall	3'1" x 12'1"	38 sq. ft	Yes
11	Hall	20'3" x 4'2"	84 sq. ft	Yes

Home data report

2140 East Solano Drive, Camelback East, Phoenix, Maricopa County, Arizona, United States, 85016

#		Dimensions	sqft	Counted as living area
12	Primary Bath	12'11" x 15'11"	206 sq. ft	Yes
13	Bath	7'8" x 8'4"	64 sq. ft	Yes
14	W.I.C.	17'5" x 6'11"	121 sq. ft	Yes
15	Hall	10'6" x 12'5"	131 sq. ft	Yes
16	Bedroom	15'1" x 11'8"	176 sq. ft	Yes
17	Bath	5'10" x 8'4"	49 sq. ft	Yes
18	Living Room	25'9" x 16'6"	426 sq. ft	Yes
19	Hall	15'3" x 4'11"	76 sq. ft	Yes
20	Storage	7'0" x 14'5"	101 sq. ft	No
21	Kitchen	14'6" x 15'6"	225 sq. ft	Yes
22	Bedroom	15'11" x 11'8"	185 sq. ft	Yes
23	Bedroom	11'2" x 15'1"	168 sq. ft	Yes
24	Patio	15'1" x 29'11"	451 sq. ft	No

2140 East Solano Drive, Camelback East, Phoenix, Maricopa County, Arizona, United States, 85016

1 Floor 1 - Foyer



Dimensions: 6'3" x 10'3"
Area: 64 sq. ft
Counted as living area: Yes

Heated: Yes
Finished: Yes
Enclosed: Yes
Contiguous: Yes
Permitted: Yes
Wet space: No
Addition: No
Conversion: No

2 Floor 1 - Covered Patio

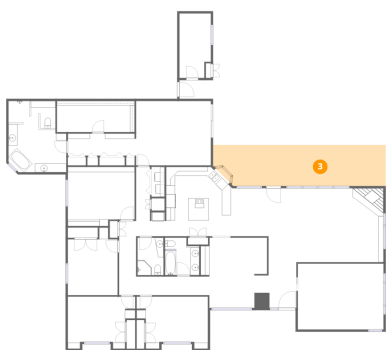


Dimensions: 7'6" x 4'2"
Area: 31 sq. ft
Counted as living area: No

Heated: No
Finished: No
Enclosed: No
Contiguous: Yes
Permitted: Yes
Wet space: No
Addition: No
Conversion: No

2140 East Solano Drive, Camelback East, Phoenix, Maricopa County, Arizona, United States, 85016

3 Floor 1 - Porch



Dimensions: 38'8" x 9'2"
Area: 353 sq. ft
Counted as living area: No

Heated: No
Finished: No
Enclosed: No
Contiguous: Yes
Permitted: Yes
Wet space: No
Addition: No
Conversion: No

4 Floor 1 - Breakfast Nook



Dimensions: 8'5" x 10'10"
Area: 92 sq. ft
Counted as living area: Yes

Heated: Yes
Finished: Yes
Enclosed: Yes
Contiguous: Yes
Permitted: Yes
Wet space: No
Addition: No
Conversion: No

5 Floor 1 - Laundry



Dimensions: 2'11" x 6'8"
Area: 20 sq. ft
Counted as living area: Yes

Heated: Yes
Finished: Yes
Enclosed: Yes
Contiguous: Yes
Permitted: Yes
Wet space: No
Addition: No
Conversion: No

2140 East Solano Drive, Camelback East, Phoenix, Maricopa County, Arizona, United States, 85016

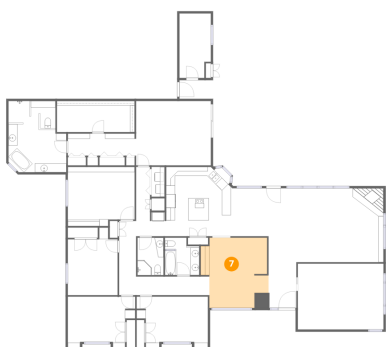
6 Floor 1 - Primary Bedroom



Dimensions: 16'8" x 14'5"
Area: 240 sq. ft
Counted as living area: Yes

Heated: Yes
Finished: Yes
Enclosed: Yes
Contiguous: Yes
Permitted: Yes
Wet space: No
Addition: No
Conversion: No

7 Floor 1 - Dining Area



Dimensions: 14'10" x 15'8"
Area: 233 sq. ft
Counted as living area: Yes

Heated: Yes
Finished: Yes
Enclosed: Yes
Contiguous: Yes
Permitted: Yes
Wet space: No
Addition: No
Conversion: No

8 Floor 1 - Den

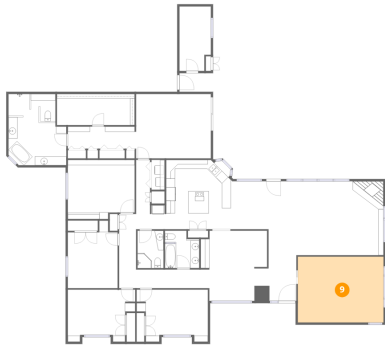


Dimensions: 14'11" x 13'3"
Area: 198 sq. ft
Counted as living area: Yes

Heated: Yes
Finished: Yes
Enclosed: Yes
Contiguous: Yes
Permitted: Yes
Wet space: No
Addition: No
Conversion: No

2140 East Solano Drive, Camelback East, Phoenix, Maricopa County, Arizona, United States, 85016

9 Floor 1 - Family Room



Dimensions: 19'2" x 14'9"
Area: 282 sq. ft
Counted as living area: Yes

Heated: Yes
Finished: Yes
Enclosed: Yes
Contiguous: Yes
Permitted: Yes
Wet space: No
Addition: No
Conversion: No

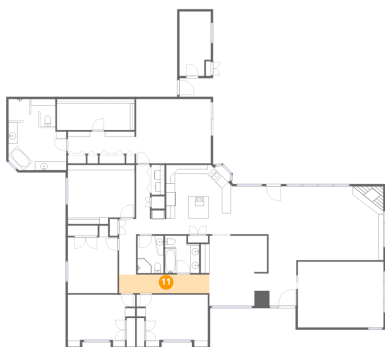
10 Floor 1 - Hall



Dimensions: 3'1" x 12'1"
Area: 38 sq. ft
Counted as living area: Yes

Heated: Yes
Finished: Yes
Enclosed: Yes
Contiguous: Yes
Permitted: Yes
Wet space: No
Addition: No
Conversion: No

11 Floor 1 - Hall

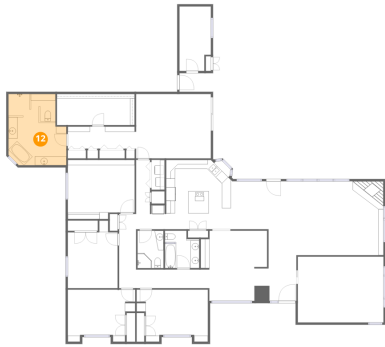


Dimensions: 20'3" x 4'2"
Area: 84 sq. ft
Counted as living area: Yes

Heated: Yes
Finished: Yes
Enclosed: Yes
Contiguous: Yes
Permitted: Yes
Wet space: No
Addition: No
Conversion: No

2140 East Solano Drive, Camelback East, Phoenix, Maricopa County, Arizona, United States, 85016

12 Floor 1 - Primary Bath



Dimensions: 12'11" x 15'11"
Area: 206 sq. ft
Counted as living area: Yes

Heated: Yes
Finished: Yes
Enclosed: Yes
Contiguous: Yes
Permitted: Yes
Wet space: Yes
Addition: No
Conversion: No

13 Floor 1 - Bath



Dimensions: 7'8" x 8'4"
Area: 64 sq. ft
Counted as living area: Yes

Heated: Yes
Finished: Yes
Enclosed: Yes
Contiguous: Yes
Permitted: Yes
Wet space: Yes
Addition: No
Conversion: No

14 Floor 1 - W.I.C.



Dimensions: 17'5" x 6'11"
Area: 121 sq. ft
Counted as living area: Yes

Heated: Yes
Finished: Yes
Enclosed: Yes
Contiguous: Yes
Permitted: Yes
Wet space: No
Addition: No
Conversion: No

2140 East Solano Drive, Camelback East, Phoenix, Maricopa County, Arizona, United States, 85016

15 Floor 1 - Hall



Dimensions: 10'6" x 12'5"
Area: 131 sq. ft
Counted as living area: Yes

Heated: Yes
Finished: Yes
Enclosed: Yes
Contiguous: Yes
Permitted: Yes
Wet space: No
Addition: No
Conversion: No

16 Floor 1 - Bedroom



Dimensions: 15'1" x 11'8"
Area: 176 sq. ft
Counted as living area: Yes

Heated: Yes
Finished: Yes
Enclosed: Yes
Contiguous: Yes
Permitted: Yes
Wet space: No
Addition: No
Conversion: No

17 Floor 1 - Bath

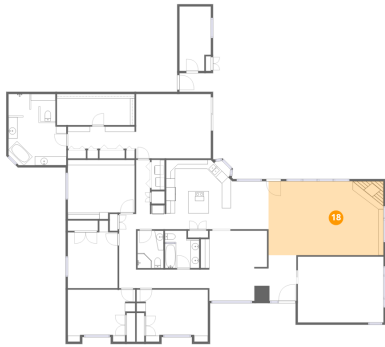


Dimensions: 5'10" x 8'4"
Area: 49 sq. ft
Counted as living area: Yes

Heated: Yes
Finished: Yes
Enclosed: Yes
Contiguous: Yes
Permitted: Yes
Wet space: Yes
Addition: No
Conversion: No

2140 East Solano Drive, Camelback East, Phoenix, Maricopa County, Arizona, United States, 85016

18 Floor 1 - Living Room



Dimensions: 25'9" x 16'6"
Area: 426 sq. ft
Counted as living area: Yes

Heated: Yes
Finished: Yes
Enclosed: Yes
Contiguous: Yes
Permitted: Yes
Wet space: No
Addition: No
Conversion: No

19 Floor 1 - Hall



Dimensions: 15'3" x 4'11"
Area: 76 sq. ft
Counted as living area: Yes

Heated: Yes
Finished: Yes
Enclosed: Yes
Contiguous: Yes
Permitted: Yes
Wet space: No
Addition: No
Conversion: No

20 Floor 1 - Storage



Dimensions: 7'0" x 14'5"
Area: 101 sq. ft
Counted as living area: No

Heated: No
Finished: No
Enclosed: No
Contiguous: Yes
Permitted: Yes
Wet space: No
Addition: No
Conversion: No

2140 East Solano Drive, Camelback East, Phoenix, Maricopa County, Arizona, United States, 85016

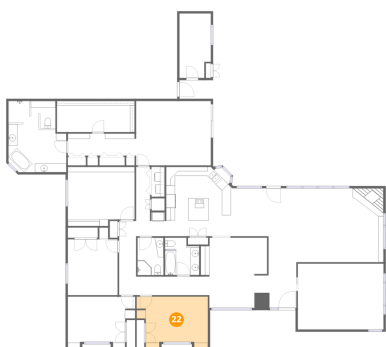
21 Floor 1 - Kitchen



Dimensions: 14'6" x 15'6"
Area: 225 sq. ft
Counted as living area: Yes

Heated: Yes
Finished: Yes
Enclosed: Yes
Contiguous: Yes
Permitted: Yes
Wet space: No
Addition: No
Conversion: No

22 Floor 1 - Bedroom



Dimensions: 15'11" x 11'8"
Area: 185 sq. ft
Counted as living area: Yes

Heated: Yes
Finished: Yes
Enclosed: Yes
Contiguous: Yes
Permitted: Yes
Wet space: No
Addition: No
Conversion: No

23 Floor 1 - Bedroom

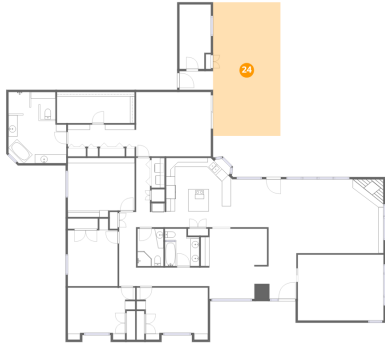


Dimensions: 11'2" x 15'1"
Area: 168 sq. ft
Counted as living area: Yes

Heated: Yes
Finished: Yes
Enclosed: Yes
Contiguous: Yes
Permitted: Yes
Wet space: No
Addition: No
Conversion: No

2140 East Solano Drive, Camelback East, Phoenix, Maricopa County, Arizona, United States, 85016

24 Floor 1 - Patio



Dimensions: 15'1" x 29'11"
Area: 451 sq. ft
Counted as living area: No

Heated: No
Finished: No
Enclosed: No
Contiguous: Yes
Permitted: Yes
Wet space: No
Addition: No
Conversion: No