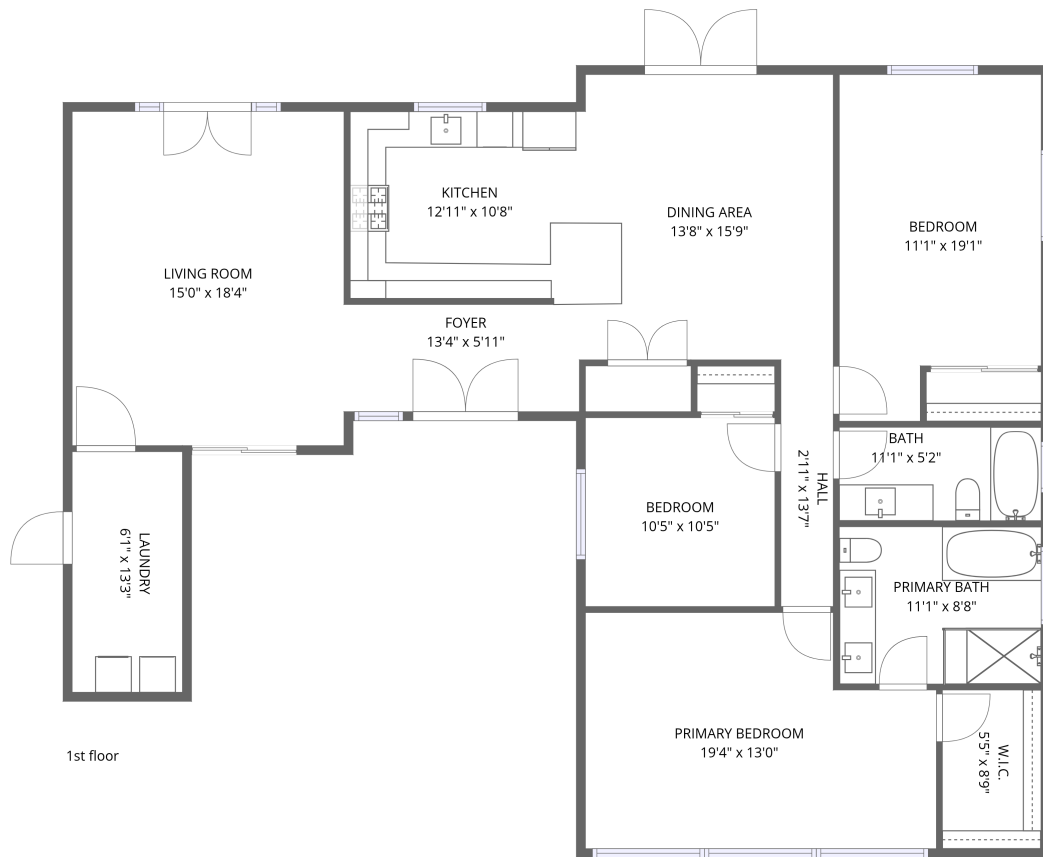


## Home data report

7233 East Monte Vista Road, South Scottsdale, Scottsdale,  
Maricopa County, Arizona, United States, 85257



**Total Area: 1647 sq. ft**

1st Floor: 1647 sq. ft

Excluded: Walls: 112 sq. ft

## Property summary

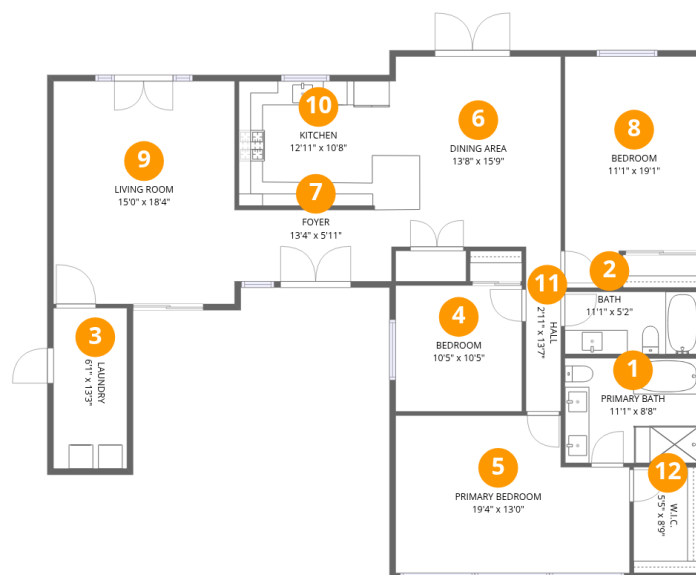
 **1** Floors

 **3** Bedrooms

 **2** Bathrooms

## Home data report

**7233 East Monte Vista Road, South Scottsdale, Scottsdale,  
Maricopa County, Arizona, United States, 85257**



## Room dimensions

Floor 1

Total:1647sqft Excluded: 0sqft

#		Dimensions	sqft	Counted as living area
1	Primary Bath	11'1" x 8'8"	96 sq. ft	Yes
2	Bath	11'1" x 5'2"	57 sq. ft	Yes
3	Laundry	6'1" x 13'3"	80 sq. ft	Yes
4	Bedroom	10'5" x 10'5"	108 sq. ft	Yes
5	Primary Bedroom	19'4" x 13'0"	251 sq. ft	Yes
6	Dining Area	13'8" x 15'9"	214 sq. ft	Yes
7	Foyer	13'4" x 5'11"	78 sq. ft	Yes
8	Bedroom	11'1" x 19'1"	212 sq. ft	Yes
9	Living Room	15'0" x 18'4"	275 sq. ft	Yes
10	Kitchen	12'11" x 10'8"	137 sq. ft	Yes
11	Hall	2'11" x 13'7"	39 sq. ft	Yes

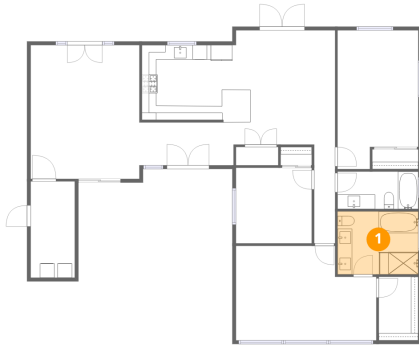
Home data report

**7233 East Monte Vista Road, South Scottsdale, Scottsdale,  
Maricopa County, Arizona, United States, 85257**

#		Dimensions	sqft	Counted as living area
12	W.I.C.	5'5" x 8'9"	48 sq. ft	Yes

7233 East Monte Vista Road, South Scottsdale, Scottsdale,  
Maricopa County, Arizona, United States, 85257

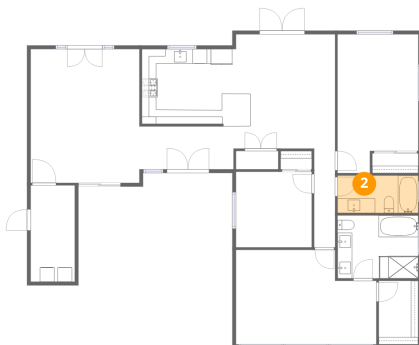
## 1 Floor 1 - Primary Bath



Dimensions: 11'1" x 8'8"  
Area: 96 sq. ft  
Counted as living area: Yes

Heated: Yes  
Finished: Yes  
Enclosed: Yes  
Contiguous: Yes  
Permitted: Yes  
Wet space: Yes  
Addition: No  
Conversion: No

## 2 Floor 1 - Bath

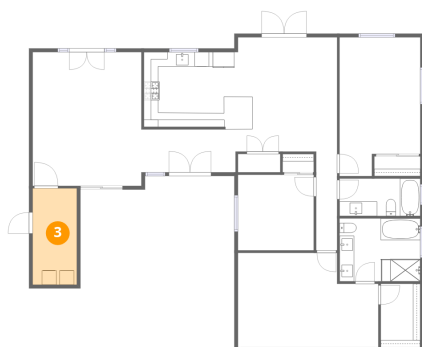


Dimensions: 11'1" x 5'2"  
Area: 57 sq. ft  
Counted as living area: Yes

Heated: Yes  
Finished: Yes  
Enclosed: Yes  
Contiguous: Yes  
Permitted: Yes  
Wet space: Yes  
Addition: No  
Conversion: No

7233 East Monte Vista Road, South Scottsdale, Scottsdale,  
Maricopa County, Arizona, United States, 85257

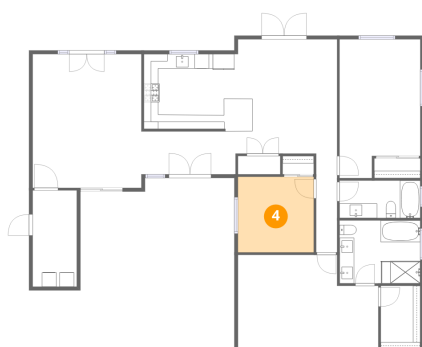
### 3 Floor 1 - Laundry



Dimensions: 6'1" x 13'3"  
Area: 80 sq. ft  
Counted as living area: Yes

Heated: Yes  
Finished: Yes  
Enclosed: Yes  
Contiguous: Yes  
Permitted: Yes  
Wet space: No  
Addition: No  
Conversion: No

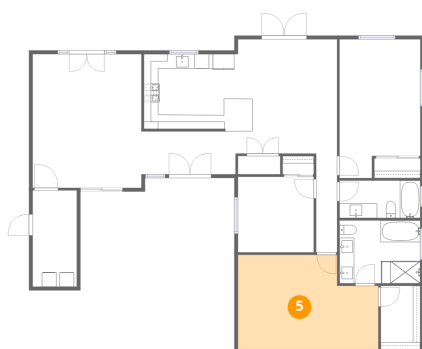
### 4 Floor 1 - Bedroom



Dimensions: 10'5" x 10'5"  
Area: 108 sq. ft  
Counted as living area: Yes

Heated: Yes  
Finished: Yes  
Enclosed: Yes  
Contiguous: Yes  
Permitted: Yes  
Wet space: No  
Addition: No  
Conversion: No

### 5 Floor 1 - Primary Bedroom



Dimensions: 19'4" x 13'0"  
Area: 251 sq. ft  
Counted as living area: Yes

Heated: Yes  
Finished: Yes  
Enclosed: Yes  
Contiguous: Yes  
Permitted: Yes  
Wet space: No  
Addition: No  
Conversion: No

7233 East Monte Vista Road, South Scottsdale, Scottsdale,  
Maricopa County, Arizona, United States, 85257

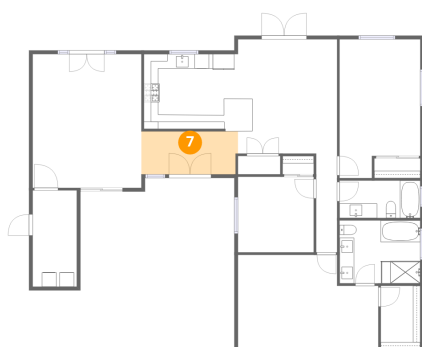
## 6 Floor 1 - Dining Area



Dimensions: 13'8" x 15'9"  
Area: 214 sq. ft  
Counted as living area: Yes

Heated: Yes  
Finished: Yes  
Enclosed: Yes  
Contiguous: Yes  
Permitted: Yes  
Wet space: No  
Addition: No  
Conversion: No

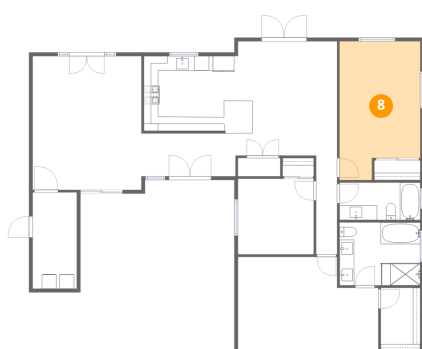
## 7 Floor 1 - Foyer



Dimensions: 13'4" x 5'11"  
Area: 78 sq. ft  
Counted as living area: Yes

Heated: Yes  
Finished: Yes  
Enclosed: Yes  
Contiguous: Yes  
Permitted: Yes  
Wet space: No  
Addition: No  
Conversion: No

## 8 Floor 1 - Bedroom

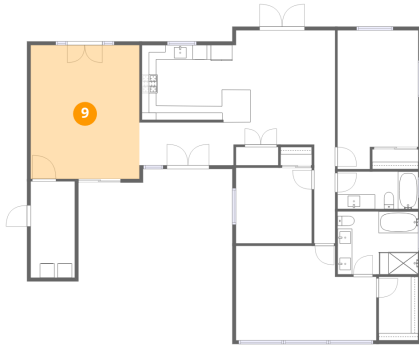


Dimensions: 11'1" x 19'1"  
Area: 212 sq. ft  
Counted as living area: Yes

Heated: Yes  
Finished: Yes  
Enclosed: Yes  
Contiguous: Yes  
Permitted: Yes  
Wet space: No  
Addition: No  
Conversion: No

7233 East Monte Vista Road, South Scottsdale, Scottsdale,  
Maricopa County, Arizona, United States, 85257

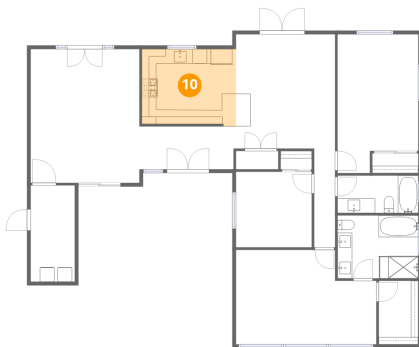
### 9 Floor 1 - Living Room



Dimensions: 15'0" x 18'4"  
Area: 275 sq. ft  
Counted as living area: Yes

Heated: Yes  
Finished: Yes  
Enclosed: Yes  
Contiguous: Yes  
Permitted: Yes  
Wet space: No  
Addition: No  
Conversion: No

### 10 Floor 1 - Kitchen



Dimensions: 12'11" x 10'8"  
Area: 137 sq. ft  
Counted as living area: Yes

Heated: Yes  
Finished: Yes  
Enclosed: Yes  
Contiguous: Yes  
Permitted: Yes  
Wet space: No  
Addition: No  
Conversion: No

### 11 Floor 1 - Hall



Dimensions: 2'11" x 13'7"  
Area: 39 sq. ft  
Counted as living area: Yes

Heated: Yes  
Finished: Yes  
Enclosed: Yes  
Contiguous: Yes  
Permitted: Yes  
Wet space: No  
Addition: No  
Conversion: No

7233 East Monte Vista Road, South Scottsdale, Scottsdale,  
Maricopa County, Arizona, United States, 85257

**12** Floor 1 - W.I.C.

---



Dimensions: 5'5" x 8'9"  
Area: 48 sq. ft  
Counted as living area: Yes

Heated: Yes  
Finished: Yes  
Enclosed: Yes  
Contiguous: Yes  
Permitted: Yes  
Wet space: No  
Addition: No  
Conversion: No