

DISTINCTIVE HOMES

Luxury Collection



33 OAKVIEW AVENUE
MAPLEWOOD
www.33OakviewAve.com



The Robert Northfield Team

WELCOME HOME!

Welcome to 33 Oakview Avenue, Maplewood - a rare blend of period details with incredible modern amenities, located in the heart of Maplewood just 1 block from downtown Village shops, restaurants and mid-town direct trains to NYC.

Designed with today's Buyers in mind, you'll find high ceilings, wide windows, custom millwork, and stylish design details throughout a flowing, open floorplan offering 4 levels of living space. Fall in love with the custom gourmet kitchen which opens to an open, plan 1st floor. A private primary suite, multiple office spaces, and an incredible deep yard complete this very special offering.

Don't miss this incredible opportunity!

Melissa

Melissa Sheehy

Listing Specialist, The Robert Northfield Team

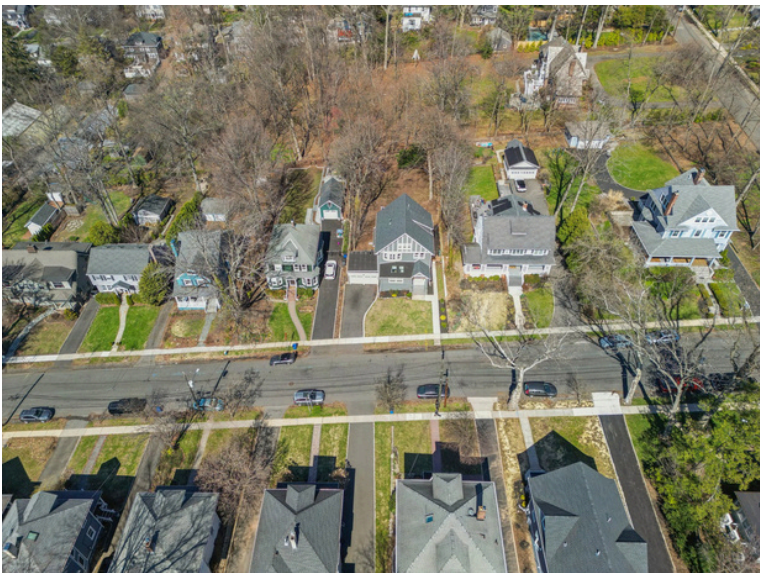
Realtor -Salesperson

Keller Williams MidTown Direct

MSheehy@kw.com

Cell: (973) 342-1369

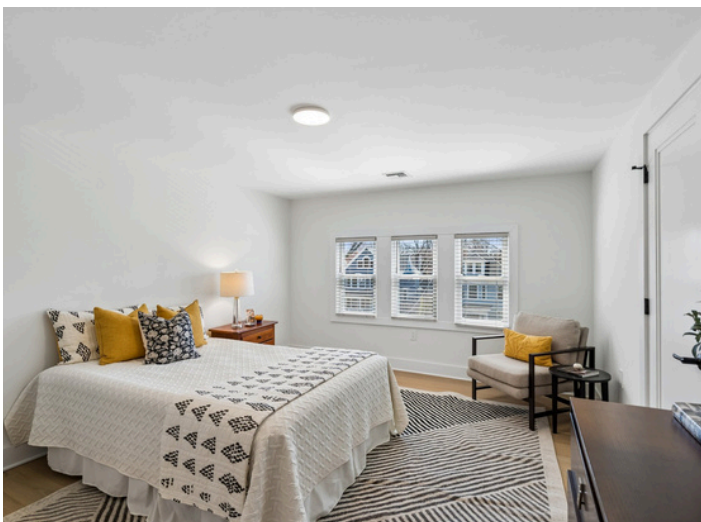
Office: (973) 762-5400

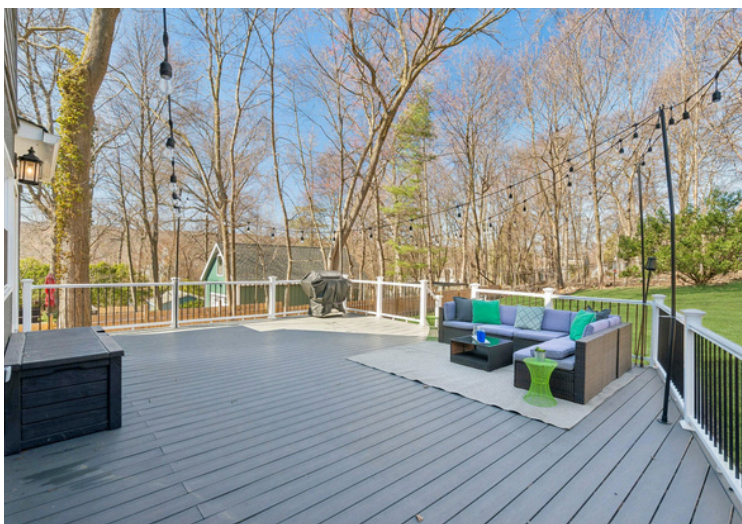












WELCOME HOME!

BUILT CIRCA 1925
5 BEDROOMS / 4.1 BATHS / 0.24 ACRES

GRACIOUS LIVING

- Wide plank French oak flooring, 1st, 2nd and 3rd floors
- Modern color scheme, wall coverings, lighting, hardware and finishes
 - Open plan living and dining rooms
 - Family room with skylights
 - Beamed ceilings and wide period moldings
 - Built-ins installed in 3rd bedroom on 2nd floor (2024)
- Whole home outfitted in custom window coverings, including blackout blinds in primary bedroom and front facing bedroom on 2nd floor (2024)
 - Bathrooms feature Kohler fixtures and porcelain tile
- Finished full lower level with full bath, laundry, garage access and ample recreation space and storage and low maintenance flooring

KITCHEN

Elegantly designed gourmet kitchen with Calcatta Lazzo Ovo quartz counters and breakfast bar, tile backsplash, under cabinet lighting, ceramic sink, shaker style cabinetry, GE Cafe appliances, vent hood, pot filler and built-in beverage fridge

PRIMARY BEDROOM

- Sophisticated primary bedroom suite with walk-in closet and en-suite bath with spacious glass enclosed shower, double vanity by Studio McGee, soaking tub

ADDITIONAL IMPROVEMENTS:

- LED recessed ceiling lights with smart dimmers (1st floor)
- Multi- zone forced hot air / central air conditioning with Nest smart thermostats
 - Thermal insulated windows and side doors
 - Newer roof and gutters*
 - Updated electric and plumbing*
 - Whole home alarm system (ADT) installed (2024)
- Front door smart lock installed - facial and fingerprint recognition
- Ring doorbell camera and floodlight (not used by current owners)
- Detached 2 car garage with electric door opener
- Professionally landscaped and fully fenced property with specimen plantings and composite deck

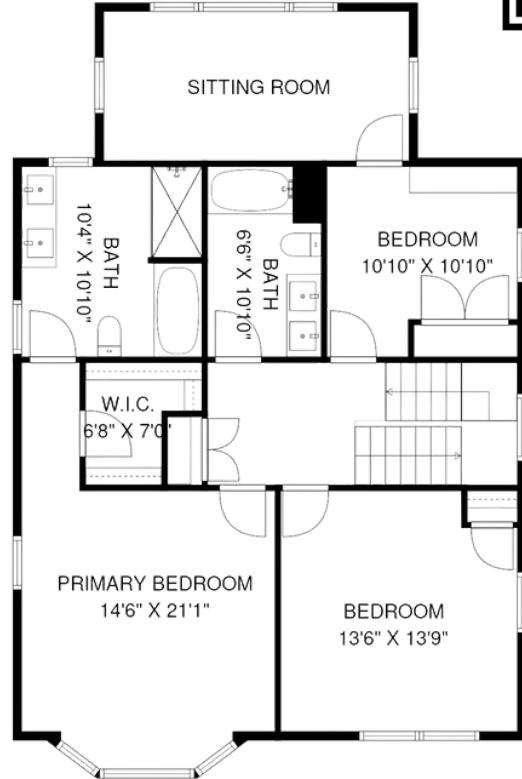
Desirable in-town location with unbeatable access to NYC trains, parks and vibrant Maplewood Village

*Prior to ownership 2022-2024 timeframe

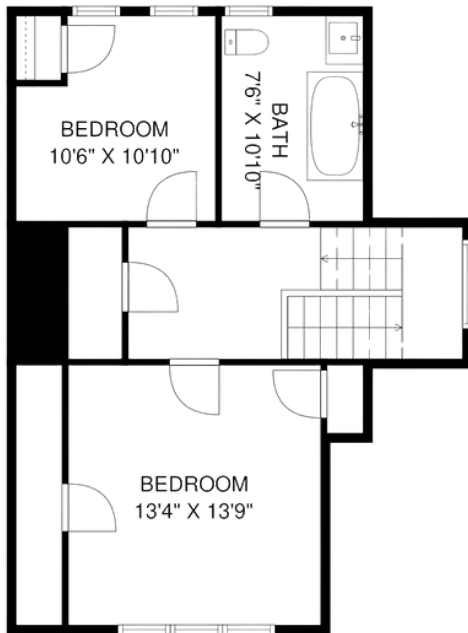
THE FLOOR PLAN



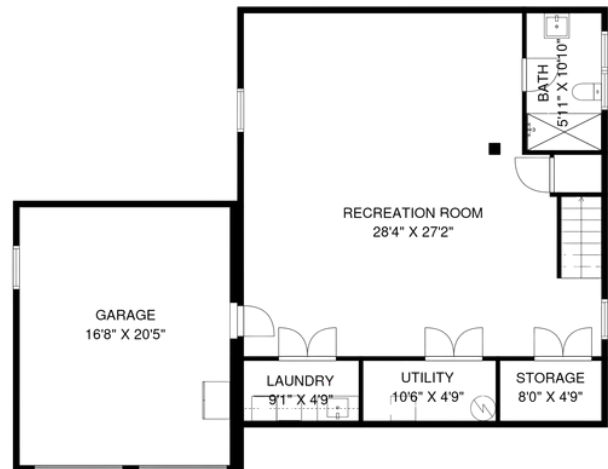
1st Floor



2nd Floor

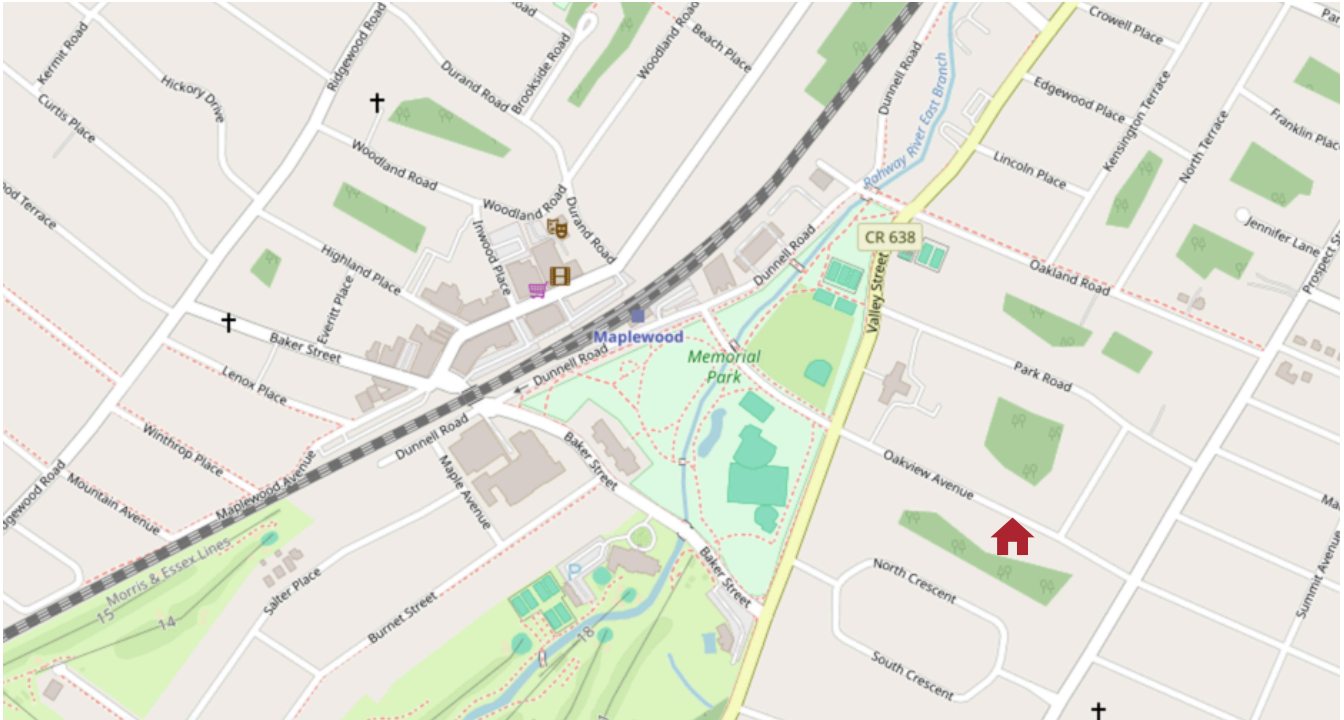


3rd Floor



Lower Level

LIVING IN MAPLEWOOD



Maplewood is a quaint residential community boasting authentic Tudor, Colonial, and Victorian homes, tree-lined streets beautiful parks, and a bustling Village center with vibrant shops, eateries and conveniences.

Maplewood is served by NJ Transit railroad which provides service along the Morris and Essex Line to Newark Broad Street Station and either to New York Penn Station (some stopping at Secaucus Junction) or Hoboken Terminal.



**Robert Northfield, Team Leader
Broker - Salesperson**

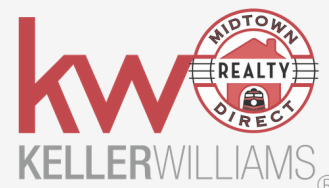
Keller Williams Mid-Town Direct

RobertNorthfield@kw.com

Cell: (973) 544-8001

Office: (973) 761-4100

www.RobertNorthfieldRealEstate.com



The Robert Northfield Team



Helping People on the Move for More than 25 years!