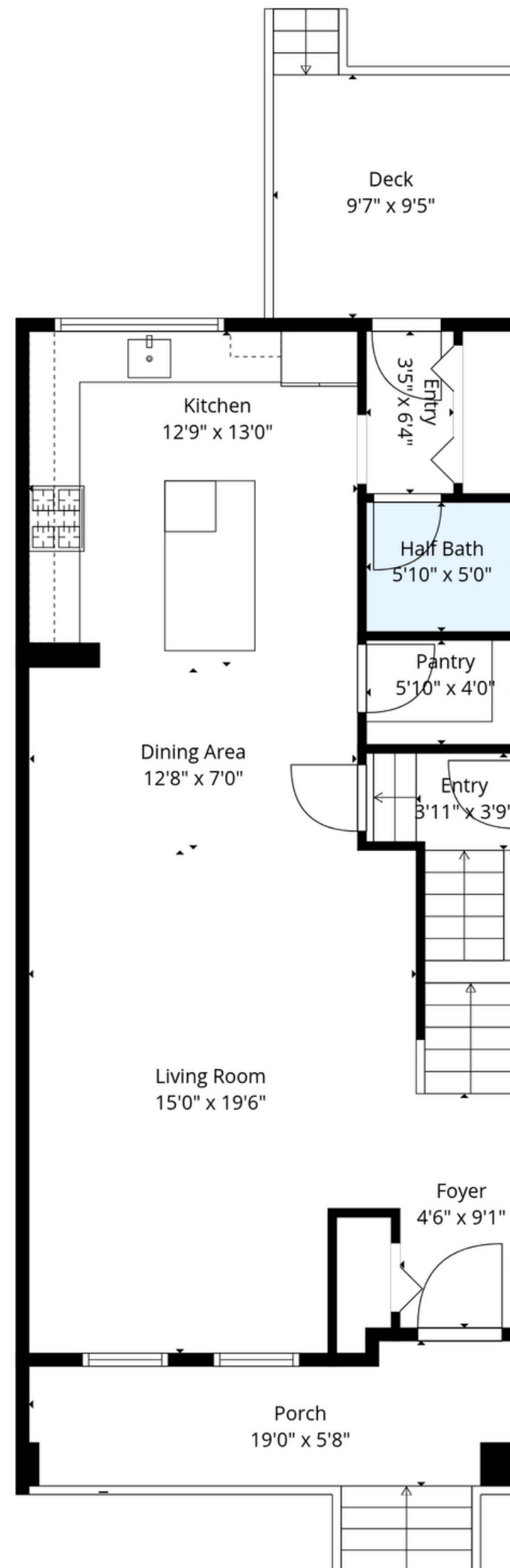


Total GLA: 1614 sq. ft | Total: 2536 sq. ft
 Basement: 613 sq. ft (Excluded areas 101 sq. ft)
 1st floor: 790 sq. ft (Excluded areas 208 sq. ft)
 2nd floor: 824 sq. ft

Information Is Calculated By Air Unlimited Corp. ; Deemed Highly Reliable But Not Guaranteed.
 Address: 125 Edith Gate NW Calgary

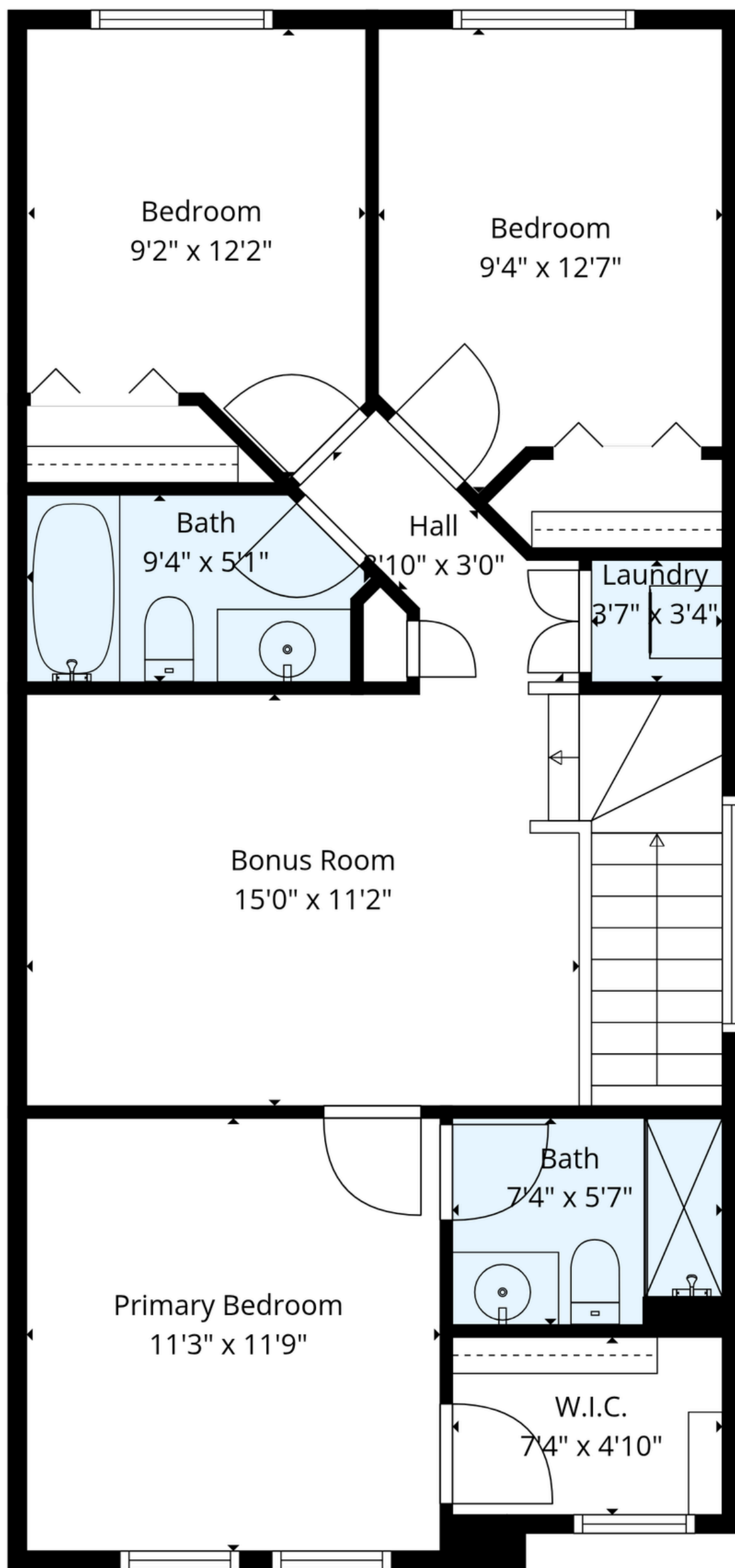




Total GLA: 1614 sq. ft | Total: 2536 sq. ft
 Basement: 613 sq. ft (Excluded areas 101 sq. ft)
 1st floor: 790 sq. ft (Excluded areas 208 sq. ft)
 2nd floor: 824 sq. ft

Information Is Calculated By Air Unlimited Corp. ; Deemed Highly Reliable But Not Guaranteed.
 Address: 125 Edith Gate NW Calgary





Total GLA: 1614 sq. ft | Total: 2536 sq. ft
 Basement: 613 sq. ft (Excluded areas 101 sq. ft)
 1st floor: 790 sq. ft (Excluded areas 208 sq. ft)
 2nd floor: 824 sq. ft

Information Is Calculated By Air Unlimited Corp. ; Deemed Highly Reliable But Not Guaranteed.
 Address: 125 Edith Gate NW Calgary





Total GLA: 1614 sq. ft | Total: 2536 sq. ft
 Basement: 613 sq. ft (Excluded areas 101 sq. ft)
 1st floor: 790 sq. ft (Excluded areas 208 sq. ft)
 2nd floor: 824 sq. ft

Information Is Calculated By Air Unlimited Corp. ; Deemed Highly Reliable But Not Guaranteed.
 Address: 125 Edith Gate NW Calgary

