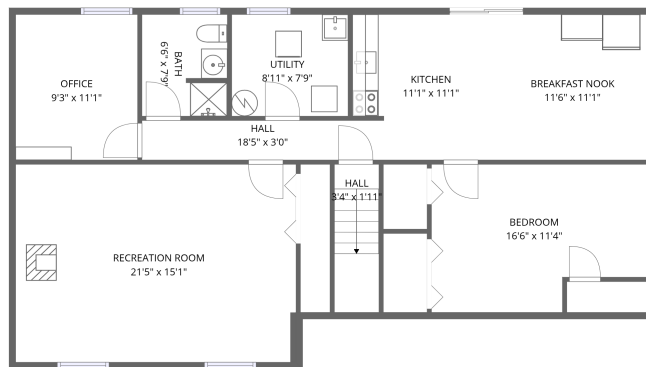
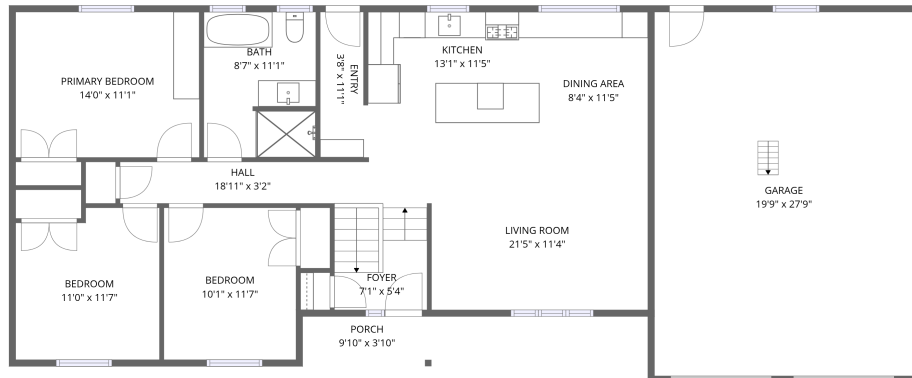


Home data report

5 John Street, Loretto, Simcoe County, Ontario, Canada, L0G 1L0

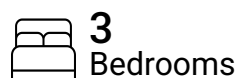


Total Area: 2360 sq. ft

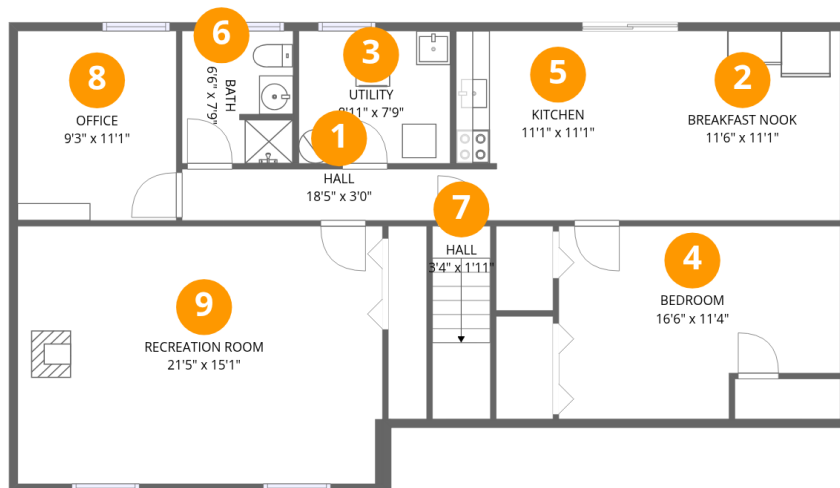
Basement: 1180 sq. ft, 1st Floor: 1180 sq. ft

Excluded: Garage 550 sq. ft, Porch 37 sq. ft, Walls: 188 sq. ft

Property summary



5 John Street, Loretto, Simcoe County, Ontario, Canada, L0G 1L0



Room dimensions

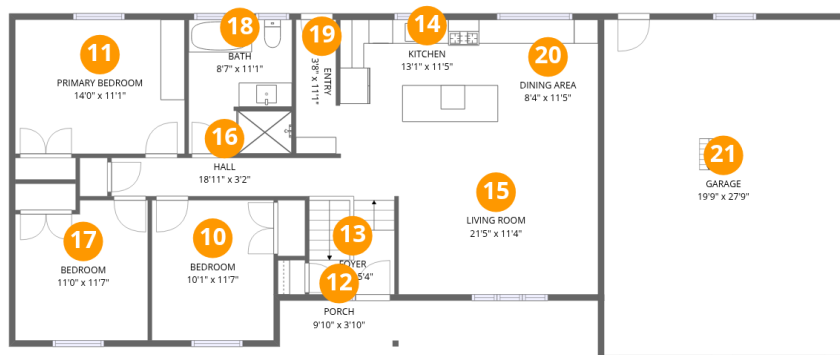
Floor 1 Below grade

Total:1180sqft Excluded: 0sqft

#		Dimensions	sqft	Counted as living area
1	Hall	18'5" x 3'0"	56 sq. ft	Yes
2	Breakfast Nook	11'6" x 11'1"	128 sq. ft	Yes
3	Utility	8'11" x 7'9"	69 sq. ft	Yes
4	Bedroom	16'6" x 11'4"	187 sq. ft	Yes
5	Kitchen	11'1" x 11'1"	123 sq. ft	Yes
6	Bath	6'6" x 7'9"	51 sq. ft	Yes
7	Hall	3'4" x 1'11"	6 sq. ft	Yes
8	Office	9'3" x 11'1"	103 sq. ft	Yes
9	Recreation Room	21'5" x 15'1"	323 sq. ft	Yes

Home data report

5 John Street, Loretto, Simcoe County, Ontario, Canada, L0G 1L0



Room dimensions

Floor 2

Total:1180sqft Excluded: 587sqft

#		Dimensions	sqft	Counted as living area
10	Bedroom	10'1" x 11'7"	117 sq. ft	Yes
11	Primary Bedroom	14'0" x 11'1"	156 sq. ft	Yes
12	Porch	9'10" x 3'10"	37 sq. ft	No
13	Foyer	7'1" x 5'4"	38 sq. ft	Yes
14	Kitchen	13'1" x 11'5"	150 sq. ft	Yes
15	Living Room	21'5" x 11'4"	242 sq. ft	Yes
16	Hall	18'11" x 3'2"	60 sq. ft	Yes
17	Bedroom	11'0" x 11'7"	128 sq. ft	Yes
18	Bath	8'7" x 11'1"	95 sq. ft	Yes
19	Entry	3'8" x 11'1"	40 sq. ft	Yes
20	Dining Area	8'4" x 11'5"	95 sq. ft	Yes

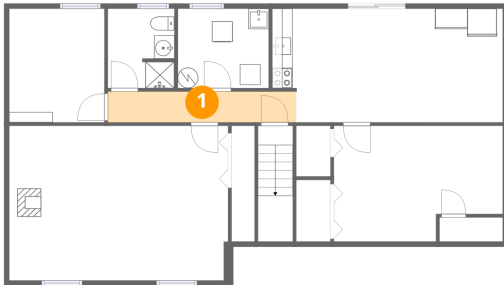
Home data report

**5 John Street, Loretto, Simcoe County, Ontario, Canada, L0G
1L0**

#		Dimensions	sqft	Counted as living area
21	Garage	19'9" x 27'9"	549 sq. ft	No

5 John Street, Loretto, Simcoe County, Ontario, Canada, L0G 1L0

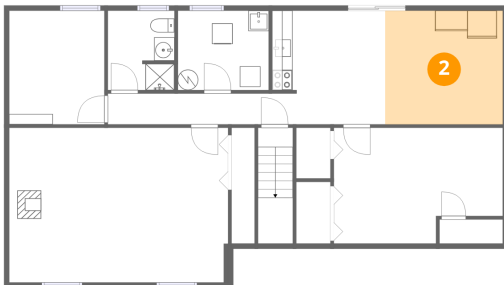
1 Floor 1 - Hall



Dimensions: 18'5" x 3'0"
Area: 56 sq. ft
Counted as living area: Yes

Heated: Yes
Finished: Yes
Enclosed: Yes
Contiguous: Yes
Permitted: Yes
Wet space: No
Addition: No
Conversion: No

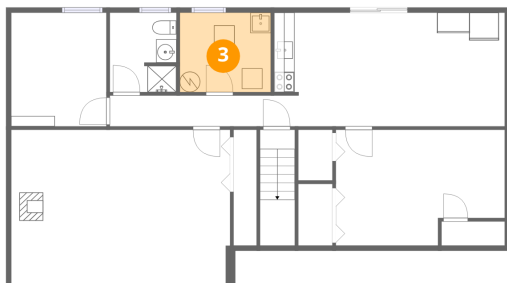
2 Floor 1 - Breakfast Nook



Dimensions: 11'6" x 11'1"
Area: 128 sq. ft
Counted as living area: Yes

Heated: Yes
Finished: Yes
Enclosed: Yes
Contiguous: Yes
Permitted: Yes
Wet space: No
Addition: No
Conversion: No

3 Floor 1 - Utility



Dimensions: 8'11" x 7'9"
Area: 69 sq. ft
Counted as living area: Yes

Heated: Yes
Finished: Yes
Enclosed: Yes
Contiguous: Yes
Permitted: Yes
Wet space: No
Addition: No
Conversion: No

4 Floor 1 - Bedroom



Dimensions: 16'6" x 11'4"
Area: 187 sq. ft
Counted as living area: Yes

Heated: Yes
Finished: Yes
Enclosed: Yes
Contiguous: Yes
Permitted: Yes
Wet space: No
Addition: No
Conversion: No

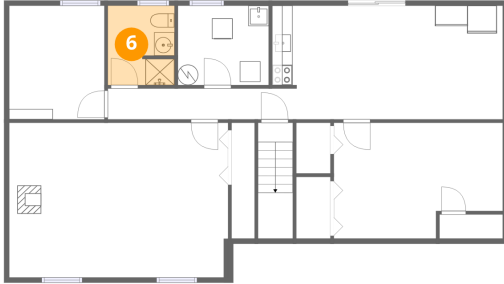
5 Floor 1 - Kitchen



Dimensions: 11'1" x 11'1"
Area: 123 sq. ft
Counted as living area: Yes

Heated: Yes
Finished: Yes
Enclosed: Yes
Contiguous: Yes
Permitted: Yes
Wet space: No
Addition: No
Conversion: No

6 Floor 1 - Bath



Dimensions: 6'6" x 7'9"
Area: 51 sq. ft
Counted as living area: Yes

Heated: Yes
Finished: Yes
Enclosed: Yes
Contiguous: Yes
Permitted: Yes
Wet space: Yes
Addition: No
Conversion: No

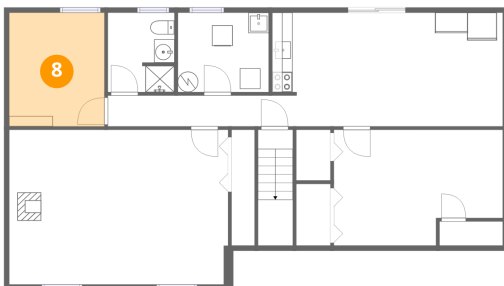
7 Floor 1 - Hall



Dimensions: 3'4" x 1'11"
Area: 6 sq. ft
Counted as living area: Yes

Heated: Yes
Finished: Yes
Enclosed: Yes
Contiguous: Yes
Permitted: Yes
Wet space: No
Addition: No
Conversion: No

8 Floor 1 - Office



Dimensions: 9'3" x 11'1"
Area: 103 sq. ft
Counted as living area: Yes

Heated: Yes
Finished: Yes
Enclosed: Yes
Contiguous: Yes
Permitted: Yes
Wet space: No
Addition: No
Conversion: No

9 Floor 1 - Recreation Room



Dimensions: 21'5" x 15'1"
Area: 323 sq. ft
Counted as living area: Yes

Heated: Yes
Finished: Yes
Enclosed: Yes
Contiguous: Yes
Permitted: Yes
Wet space: No
Addition: No
Conversion: No

10 Floor 2 - Bedroom



Dimensions: 10'1" x 11'7"
Area: 117 sq. ft
Counted as living area: Yes

Heated: Yes
Finished: Yes
Enclosed: Yes
Contiguous: Yes
Permitted: Yes
Wet space: No
Addition: No
Conversion: No

11 Floor 2 - Primary Bedroom



Dimensions: 14'0" x 11'1"
Area: 156 sq. ft
Counted as living area: Yes

Heated: Yes
Finished: Yes
Enclosed: Yes
Contiguous: Yes
Permitted: Yes
Wet space: No
Addition: No
Conversion: No

12 Floor 2 - Porch



Dimensions: 9'10" x 3'10"
Area: 37 sq. ft
Counted as living area: No

Heated: No
Finished: No
Enclosed: No
Contiguous: Yes
Permitted: Yes
Wet space: No
Addition: No
Conversion: No

13 Floor 2 - Foyer



Dimensions: 7'1" x 5'4"
Area: 38 sq. ft
Counted as living area: Yes

Heated: Yes
Finished: Yes
Enclosed: Yes
Contiguous: Yes
Permitted: Yes
Wet space: No
Addition: No
Conversion: No

14 Floor 2 - Kitchen



Dimensions: 13'1" x 11'5"
Area: 150 sq. ft
Counted as living area: Yes

Heated: Yes
Finished: Yes
Enclosed: Yes
Contiguous: Yes
Permitted: Yes
Wet space: No
Addition: No
Conversion: No

15 Floor 2 - Living Room



Dimensions: 21'5" x 11'4"
Area: 242 sq. ft
Counted as living area: Yes

Heated: Yes
Finished: Yes
Enclosed: Yes
Contiguous: Yes
Permitted: Yes
Wet space: No
Addition: No
Conversion: No

16 Floor 2 - Hall



Dimensions: 18'11" x 3'2"
Area: 60 sq. ft
Counted as living area: Yes

Heated: Yes
Finished: Yes
Enclosed: Yes
Contiguous: Yes
Permitted: Yes
Wet space: No
Addition: No
Conversion: No

17 Floor 2 - Bedroom



Dimensions: 11'0" x 11'7"
Area: 128 sq. ft
Counted as living area: Yes

Heated: Yes
Finished: Yes
Enclosed: Yes
Contiguous: Yes
Permitted: Yes
Wet space: No
Addition: No
Conversion: No

18 Floor 2 - Bath



Dimensions: 8'7" x 11'1"
Area: 95 sq. ft
Counted as living area: Yes

Heated: Yes
Finished: Yes
Enclosed: Yes
Contiguous: Yes
Permitted: Yes
Wet space: Yes
Addition: No
Conversion: No

19 Floor 2 - Entry



Dimensions: 3'8" x 11'1"
Area: 40 sq. ft
Counted as living area: Yes

Heated: Yes
Finished: Yes
Enclosed: Yes
Contiguous: Yes
Permitted: Yes
Wet space: No
Addition: No
Conversion: No

20 Floor 2 - Dining Area



Dimensions: 8'4" x 11'5"
Area: 95 sq. ft
Counted as living area: Yes

Heated: Yes
Finished: Yes
Enclosed: Yes
Contiguous: Yes
Permitted: Yes
Wet space: No
Addition: No
Conversion: No

21 Floor 2 - Garage



Dimensions: 19'9" x 27'9"
Area: 549 sq. ft
Counted as living area: No

Heated: No
Finished: No
Enclosed: Yes
Contiguous: Yes
Permitted: Yes
Wet space: No
Addition: No
Conversion: No