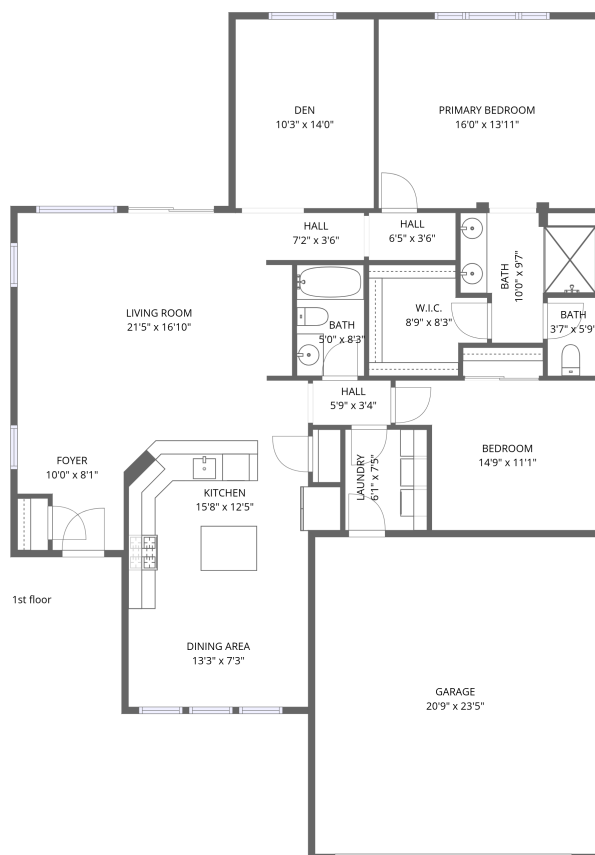


## Home data report

15672 West Roanoke Avenue, Pebblecreek, Goodyear, Maricopa County, Arizona, United States, 85395



**Total Area: 1567 sq. ft**

1st Floor: 1567 sq. ft

Excluded: Garage 485 sq. ft, Walls: 123 sq. ft

## Property summary



**1** Floors



**2** Bedrooms



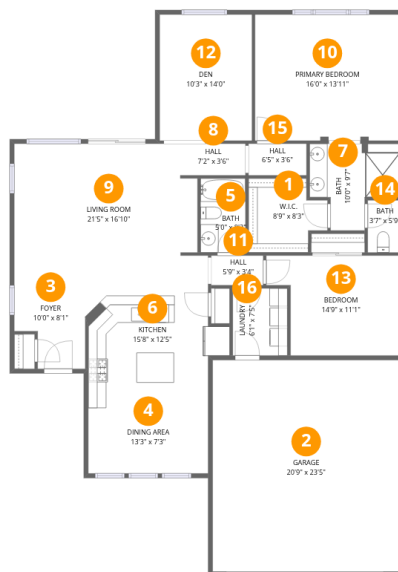
**2** Bathrooms



**1** Garages

# Home data report

15672 West Roanoke Avenue, Pebblecreek, Goodyear, Maricopa County, Arizona, United States, 85395



## Room dimensions

Floor 1

Total:1567sqft Excluded: 485sqft

#		Dimensions	sqft	Counted as living area
1	W.I.C.	8'9" x 8'3"	72 sq. ft	Yes
2	Garage	20'9" x 23'5"	485 sq. ft	No
3	Foyer	10'0" x 8'1"	81 sq. ft	Yes
4	Dining Area	13'3" x 7'3"	96 sq. ft	Yes
5	Bath	5'0" x 8'3"	41 sq. ft	Yes
6	Kitchen	15'8" x 12'5"	194 sq. ft	Yes
7	Bath	10'0" x 9'7"	96 sq. ft	Yes
8	Hall	7'2" x 3'6"	25 sq. ft	Yes
9	Living Room	21'5" x 16'10"	360 sq. ft	Yes
10	Primary Bedroom	16'0" x 13'11"	223 sq. ft	Yes
11	Hall	5'9" x 3'4"	19 sq. ft	Yes

Home data report

**15672 West Roanoke Avenue, Pebblecreek, Goodyear, Maricopa County, Arizona, United States, 85395**

#		Dimensions	sqft	Counted as living area
12	Den	10'3" x 14'0"	143 sq. ft	Yes
13	Bedroom	14'9" x 11'1"	164 sq. ft	Yes
14	Bath	3'7" x 5'9"	20 sq. ft	Yes
15	Hall	6'5" x 3'6"	22 sq. ft	Yes
16	Laundry	6'1" x 7'5"	45 sq. ft	Yes

15672 West Roanoke Avenue, Pebblecreek, Goodyear, Maricopa County, Arizona, United States, 85395

**1** Floor 1 - W.I.C.

---

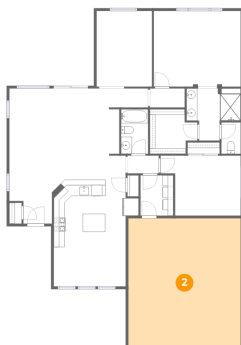


Dimensions: 8'9" x 8'3"  
Area: 72 sq. ft  
Counted as living area: Yes

Heated: Yes  
Finished: Yes  
Enclosed: Yes  
Contiguous: Yes  
Permitted: Yes  
Wet space: No  
Addition: No  
Conversion: No

**2** Floor 1 - Garage

---



Dimensions: 20'9" x 23'5"  
Area: 485 sq. ft  
Counted as living area: No

Heated: No  
Finished: No  
Enclosed: Yes  
Contiguous: Yes  
Permitted: Yes  
Wet space: No  
Addition: No  
Conversion: No

15672 West Roanoke Avenue, Pebblecreek, Goodyear, Maricopa County, Arizona, United States, 85395

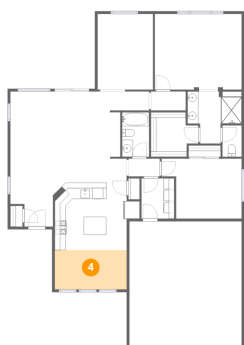
**3** Floor 1 - Foyer



Dimensions: 10'0" x 8'1"  
Area: 81 sq. ft  
Counted as living area: Yes

Heated: Yes  
Finished: Yes  
Enclosed: Yes  
Contiguous: Yes  
Permitted: Yes  
Wet space: No  
Addition: No  
Conversion: No

**4** Floor 1 - Dining Area



Dimensions: 13'3" x 7'3"  
Area: 96 sq. ft  
Counted as living area: Yes

Heated: Yes  
Finished: Yes  
Enclosed: Yes  
Contiguous: Yes  
Permitted: Yes  
Wet space: No  
Addition: No  
Conversion: No

**5** Floor 1 - Bath



Dimensions: 5'0" x 8'3"  
Area: 41 sq. ft  
Counted as living area: Yes

Heated: Yes  
Finished: Yes  
Enclosed: Yes  
Contiguous: Yes  
Permitted: Yes  
Wet space: Yes  
Addition: No  
Conversion: No

15672 West Roanoke Avenue, Pebblecreek, Goodyear, Maricopa County, Arizona, United States, 85395

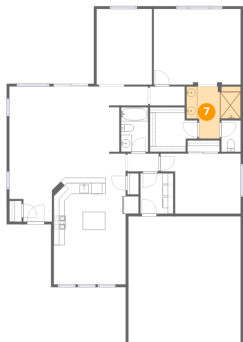
**6** Floor 1 - Kitchen



Dimensions: 15'8" x 12'5"  
Area: 194 sq. ft  
Counted as living area: Yes

Heated: Yes  
Finished: Yes  
Enclosed: Yes  
Contiguous: Yes  
Permitted: Yes  
Wet space: No  
Addition: No  
Conversion: No

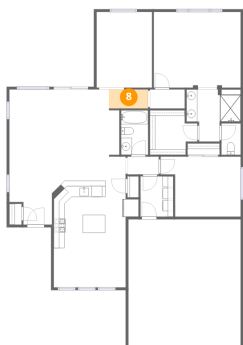
**7** Floor 1 - Bath



Dimensions: 10'0" x 9'7"  
Area: 96 sq. ft  
Counted as living area: Yes

Heated: Yes  
Finished: Yes  
Enclosed: Yes  
Contiguous: Yes  
Permitted: Yes  
Wet space: Yes  
Addition: No  
Conversion: No

**8** Floor 1 - Hall

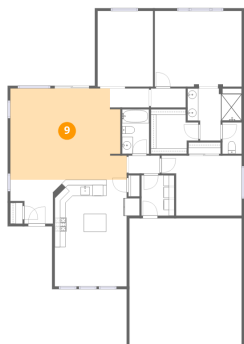


Dimensions: 7'2" x 3'6"  
Area: 25 sq. ft  
Counted as living area: Yes

Heated: Yes  
Finished: Yes  
Enclosed: Yes  
Contiguous: Yes  
Permitted: Yes  
Wet space: No  
Addition: No  
Conversion: No

15672 West Roanoke Avenue, Pebblecreek, Goodyear, Maricopa County, Arizona, United States, 85395

### 9 Floor 1 - Living Room



Dimensions: 21'5" x 16'10"  
Area: 360 sq. ft  
Counted as living area: Yes

Heated: Yes  
Finished: Yes  
Enclosed: Yes  
Contiguous: Yes  
Permitted: Yes  
Wet space: No  
Addition: No  
Conversion: No

### 10 Floor 1 - Primary Bedroom



Dimensions: 16'0" x 13'11"  
Area: 223 sq. ft  
Counted as living area: Yes

Heated: Yes  
Finished: Yes  
Enclosed: Yes  
Contiguous: Yes  
Permitted: Yes  
Wet space: No  
Addition: No  
Conversion: No

### 11 Floor 1 - Hall

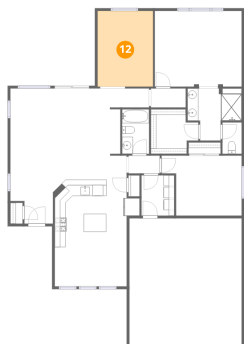


Dimensions: 5'9" x 3'4"  
Area: 19 sq. ft  
Counted as living area: Yes

Heated: Yes  
Finished: Yes  
Enclosed: Yes  
Contiguous: Yes  
Permitted: Yes  
Wet space: No  
Addition: No  
Conversion: No

15672 West Roanoke Avenue, Pebblecreek, Goodyear, Maricopa County, Arizona, United States, 85395

**12** Floor 1 - Den



Dimensions: 10'3" x 14'0"  
Area: 143 sq. ft  
Counted as living area: Yes

Heated: Yes  
Finished: Yes  
Enclosed: Yes  
Contiguous: Yes  
Permitted: Yes  
Wet space: No  
Addition: No  
Conversion: No

**13** Floor 1 - Bedroom



Dimensions: 14'9" x 11'1"  
Area: 164 sq. ft  
Counted as living area: Yes

Heated: Yes  
Finished: Yes  
Enclosed: Yes  
Contiguous: Yes  
Permitted: Yes  
Wet space: No  
Addition: No  
Conversion: No

**14** Floor 1 - Bath



Dimensions: 3'7" x 5'9"  
Area: 20 sq. ft  
Counted as living area: Yes

Heated: Yes  
Finished: Yes  
Enclosed: Yes  
Contiguous: Yes  
Permitted: Yes  
Wet space: Yes  
Addition: No  
Conversion: No

15672 West Roanoke Avenue, Pebblecreek, Goodyear, Maricopa County, Arizona, United States, 85395

**15** Floor 1 - Hall



Dimensions: 6'5" x 3'6"  
Area: 22 sq. ft  
Counted as living area: Yes

Heated: Yes  
Finished: Yes  
Enclosed: Yes  
Contiguous: Yes  
Permitted: Yes  
Wet space: No  
Addition: No  
Conversion: No

**16** Floor 1 - Laundry



Dimensions: 6'1" x 7'5"  
Area: 45 sq. ft  
Counted as living area: Yes

Heated: Yes  
Finished: Yes  
Enclosed: Yes  
Contiguous: Yes  
Permitted: Yes  
Wet space: No  
Addition: No  
Conversion: No