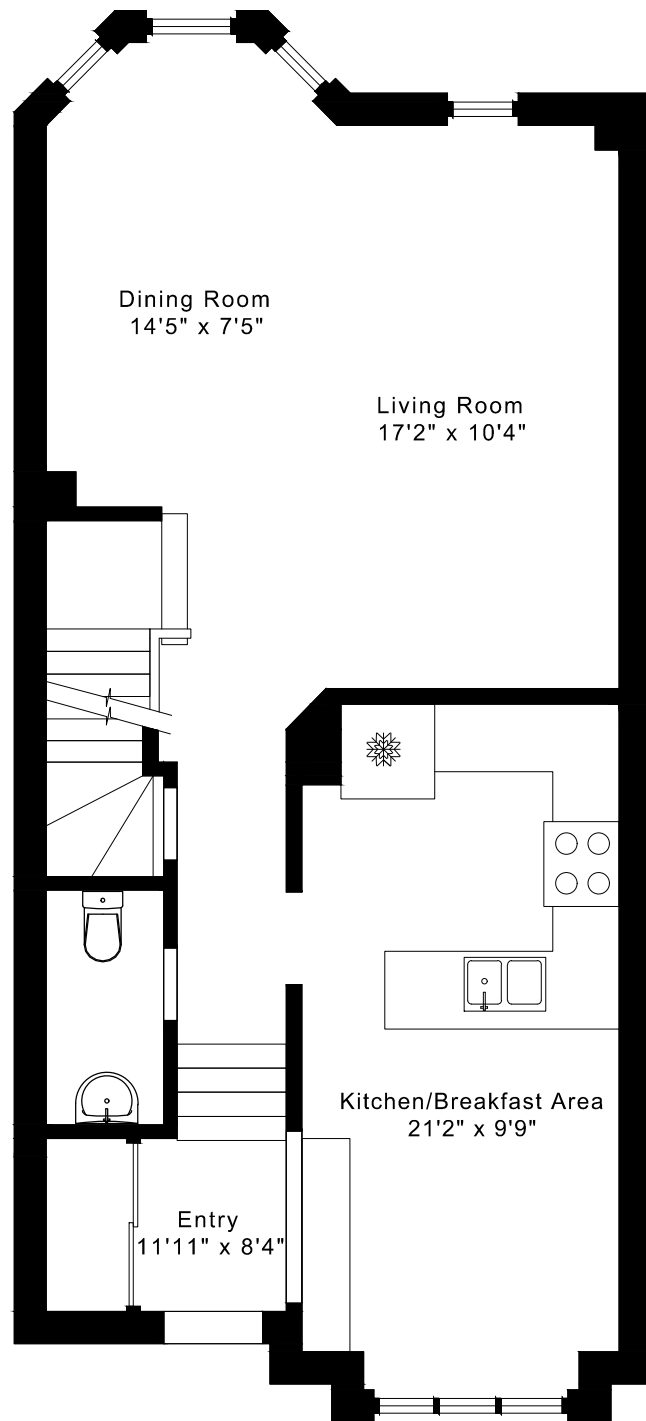
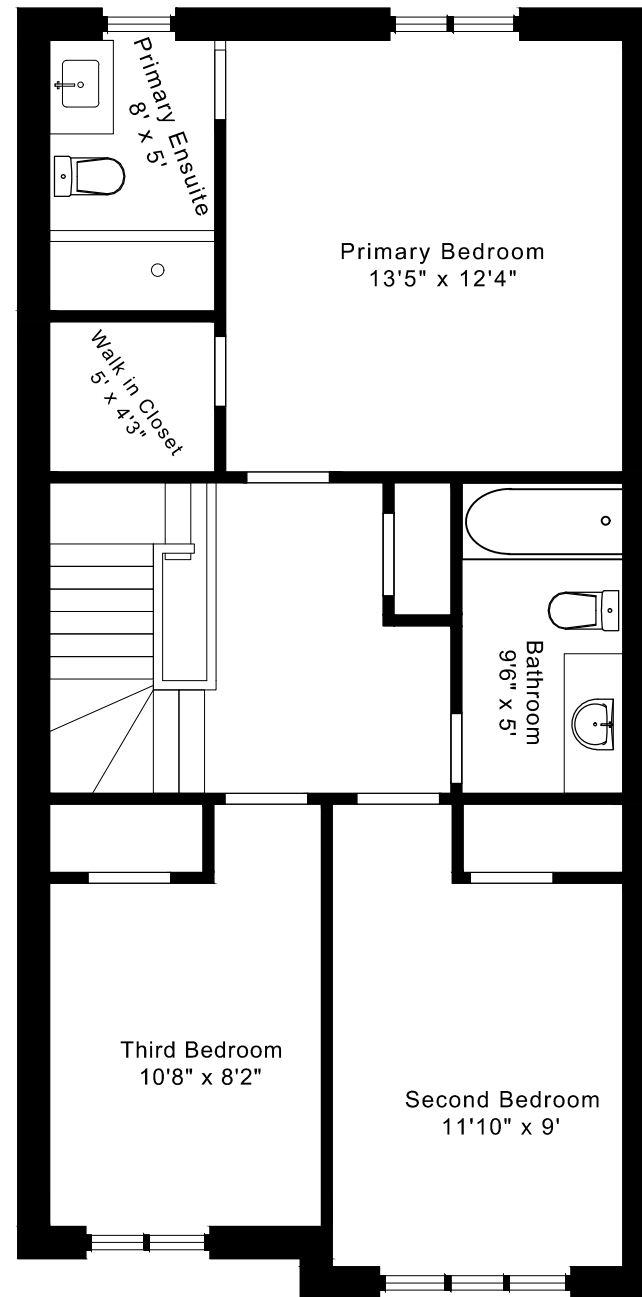


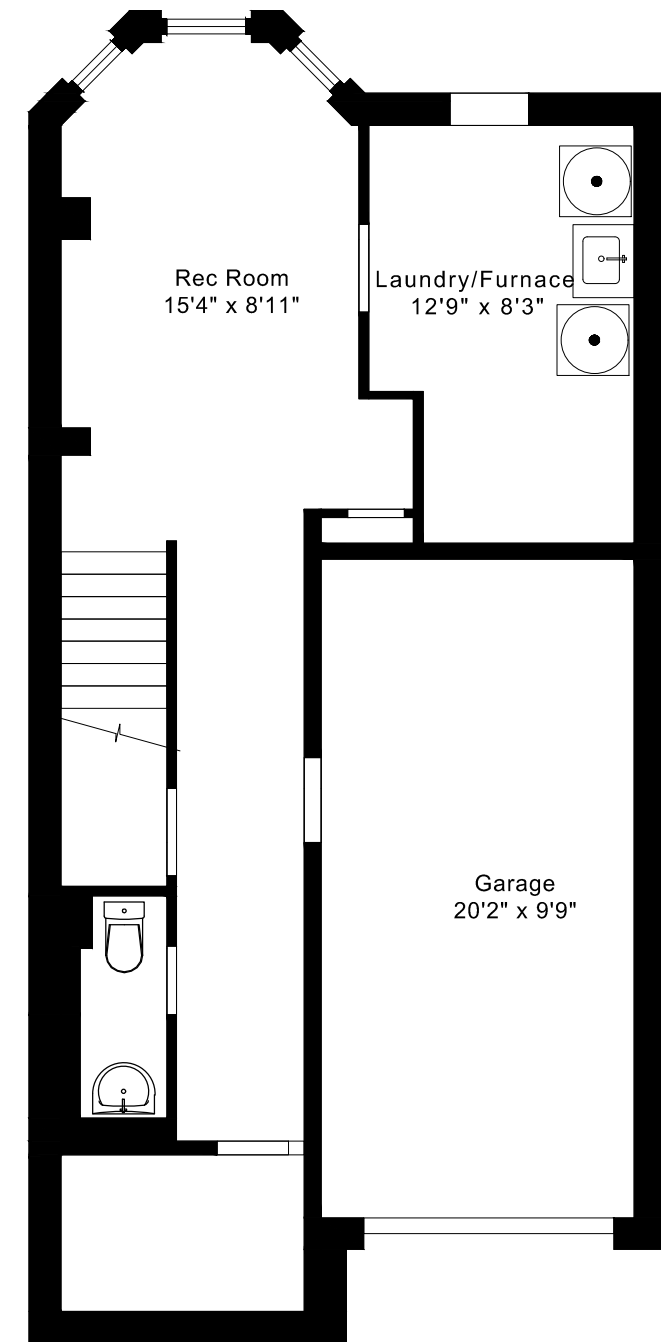
# 8 TOLLGATE MEWS FLOOR PLANS



**MAIN FLOOR**  
790 SQUARE FEET



**SECOND FLOOR**  
765 SQUARE FEET

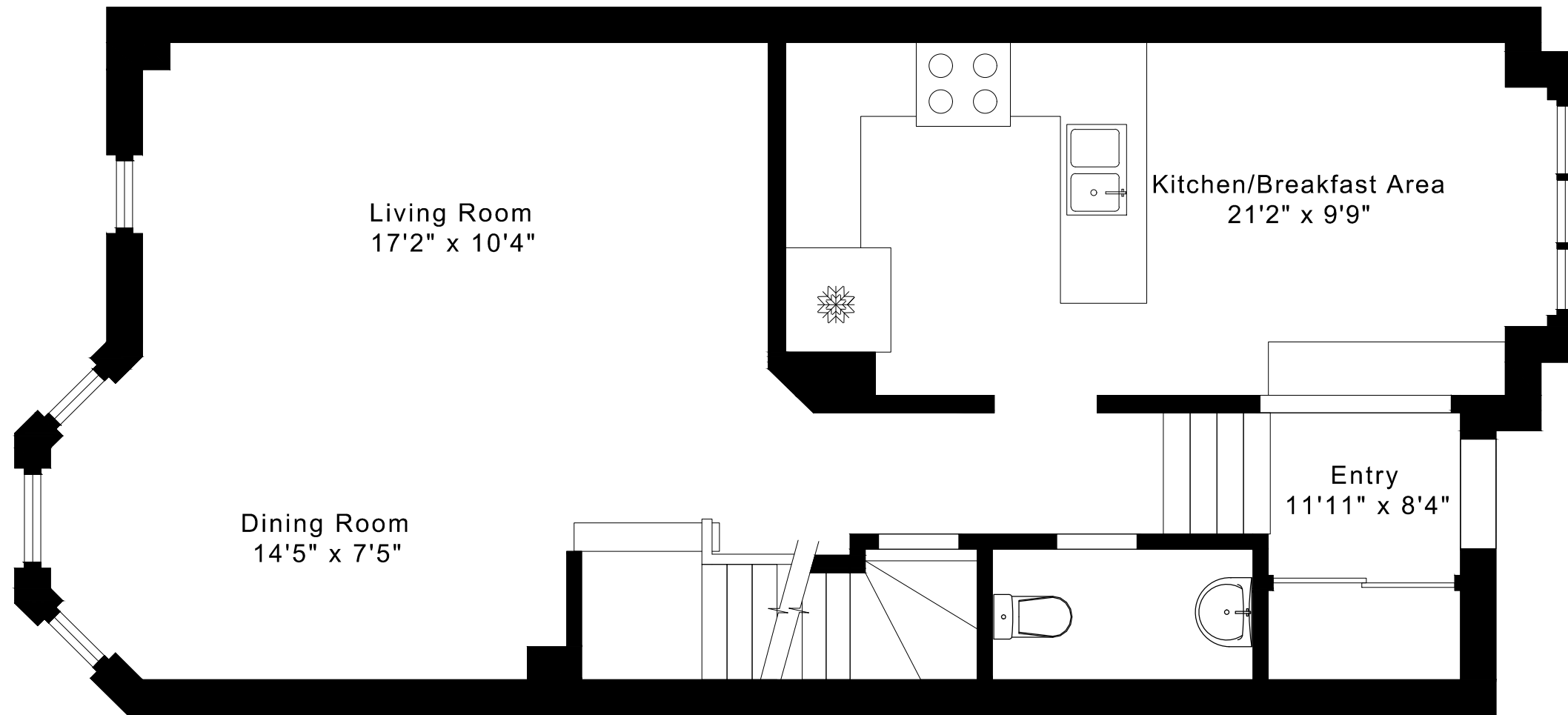


**LOWER FLOOR**  
515 SQUARE FEET

1555 sq ft + 515 sq ft  
BELOW GRADE

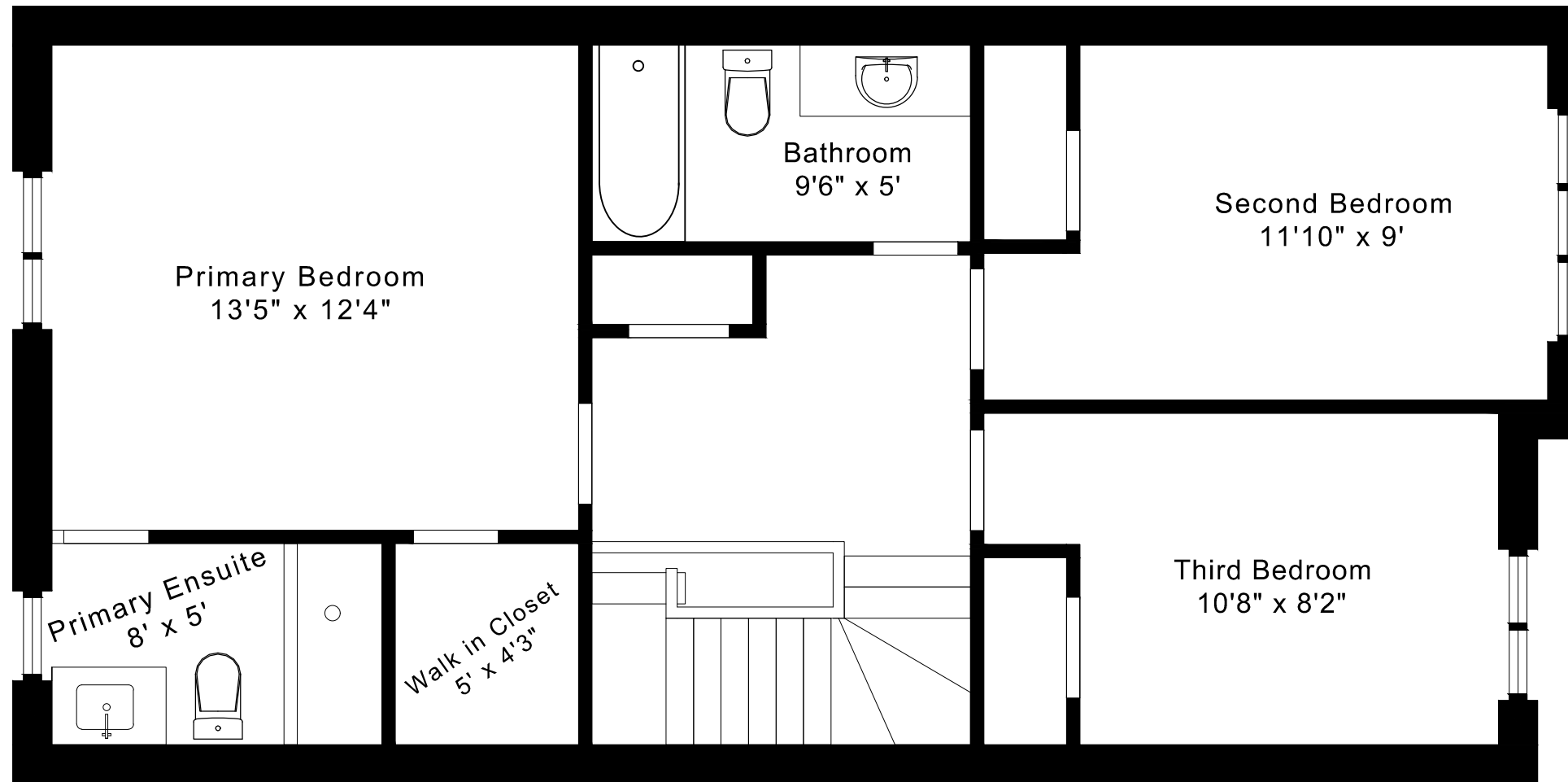
# 8 TOLLGATE MEWS FLOOR PLANS

MAIN FLOOR 790 SQUARE FEET



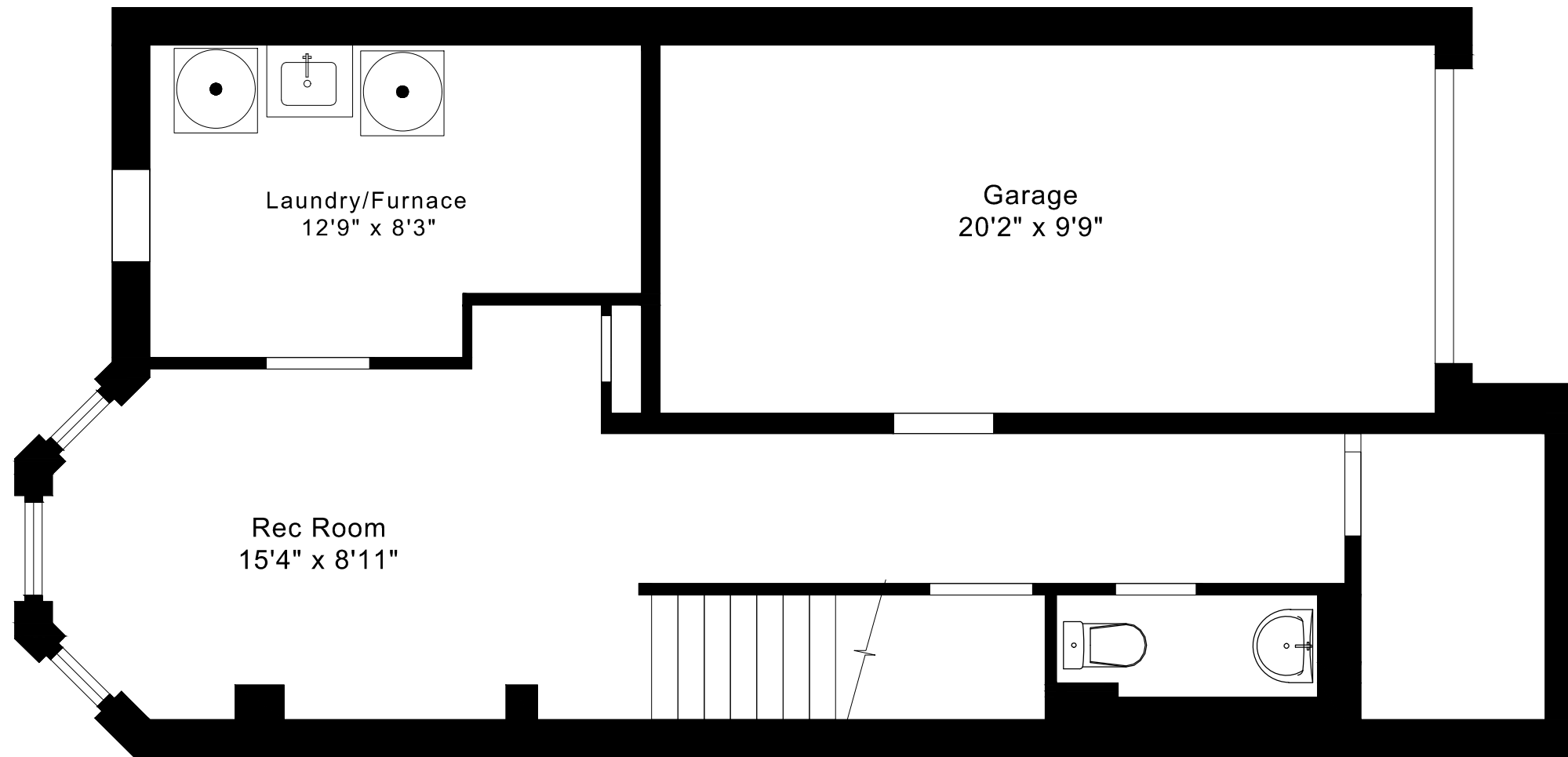
# 8 TOLLGATE MEWS FLOOR PLANS

SECOND FLOOR 765 SQUARE FEET



# 8 TOLLGATE MEWS FLOOR PLANS

LOWER FLOOR 515 SQUARE FEET



## 8 TOLLGATE MEWS ROOM MEASUREMENTS

Floor	Room	Imperial						Metric [m]		
		Length		Width		Height		Length	Width	Height
		Feet	Inches	Feet	Inches	Feet	Inches			
Second	Primary Bedroom	13	5	12	4	8	2	4,09	3,76	2,49
	Primary Ensuite	8	0	5	0	8	0	2,44	1,52	2,44
	Walk in Closet	5	0	4	3	8	2	1,52	1,30	2,49
	Second Bedroom	11	10	9	0	8	2	3,61	2,74	2,49
	Third Bedroom	10	8	8	2	8	2	3,25	2,49	2,49
	Bathroom	9	6	5	0	8	0	2,90	1,52	2,44
Main	Entry	5	2	4	5	11	5	1,57	1,35	3,48
	Living Room	17	2	10	4	8	1	5,23	3,15	2,46
	Dining Room	14	5	7	5	8	1	4,39	2,26	2,46
	Kitchen/Breakfast Area	21	2	9	9	8	1	6,45	2,97	2,46
Lower	Rec Room	15	4	8	11	8	2	4,67	2,72	2,49
	Laundry/Furnace	12	9	8	3	8	2	3,89	2,51	2,49
	Garage	20	2	9	9	8	4	6,15	2,97	2,54

CAPTURED ON: 9 APR 2026  
 DIMENSIONS ARE APPROXIMATE AND SHOULD BE CONSIDERED  
 ILLUSTRATIVE ONLY.

1555 sq ft + 515 sq ft  
 BELOW GRADE

The following is a disclaimer regarding the approximate nature of dimensions and floor areas listed in this document:

---

**Disclaimer:**

The dimensions and floor areas listed in this document are provided as an estimate only and are intended to be used for illustration purposes only. These measurements are not necessarily meant to be a perfect representation of the actual space.

**Notes regarding measurement methods and accuracy:**

The utilization of laser measurement technology during the 3D model capturing process at the location provides an accurate representation of floor plans, with a typical margin of error of 3-5%. For the most accurate and official measurement data, it is advised to consult official documents such as MPAC records, builder's pre-construction plans, or data from certified measurement companies.

Exterior wall thickness is included in the calculation of the overall square footage and is considered as a component of the footprint. The wall thickness measurement is obtained onsite whenever possible, or estimated in the event where obtaining onsite measurements is not possible, such as in the case of condominium buildings where wall thickness may vary throughout the building.