

21796 Howison Avenue

Maple Ridge, BC V2X 2W6

5 Bed 4 Bath

GROSS INTERNAL AREA

LOWER LEVEL: 1,453 sq.ft

MAIN FLOOR: 1,474 sq.ft

TOTAL: 2,927 sq.ft

EXCLUDED AREAS

COVERED DECK: 73 sq.ft

COVERED PATIO: 206 sq.ft

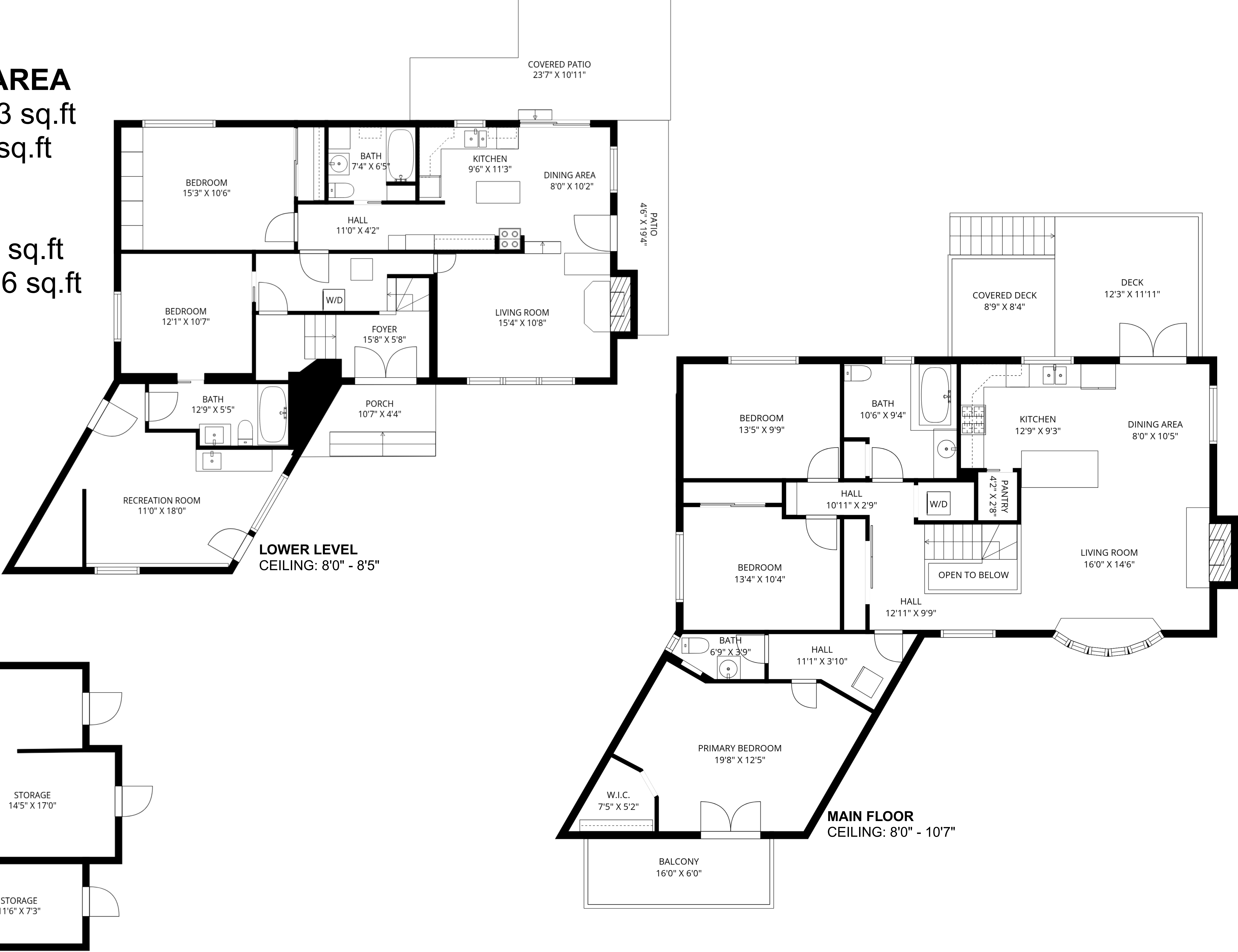
STORAGE: 365 sq.ft

BALCONY: 87 sq.ft

PORCH: 67 sq.ft

DECK: 145 sq.ft

PATIO: 79 sq.ft



Disclaimer: The floorplan provides a representation of the functionality using approximate measurement and is not meant to be a precise reflection of the property, its size and detail is to be used as advertising and demonstration only and may not be to scale. This is not meant to be for construction or architectural purposes. E&O INSURED.

