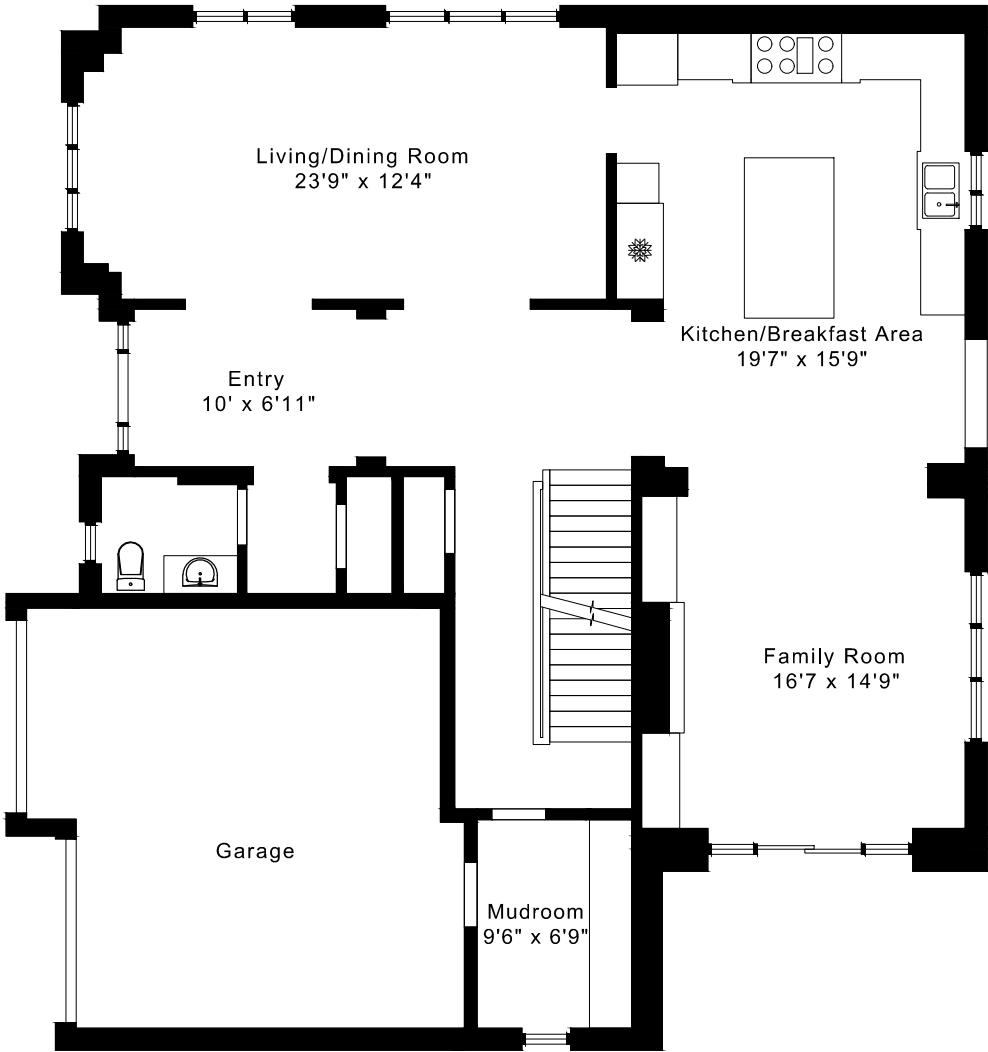
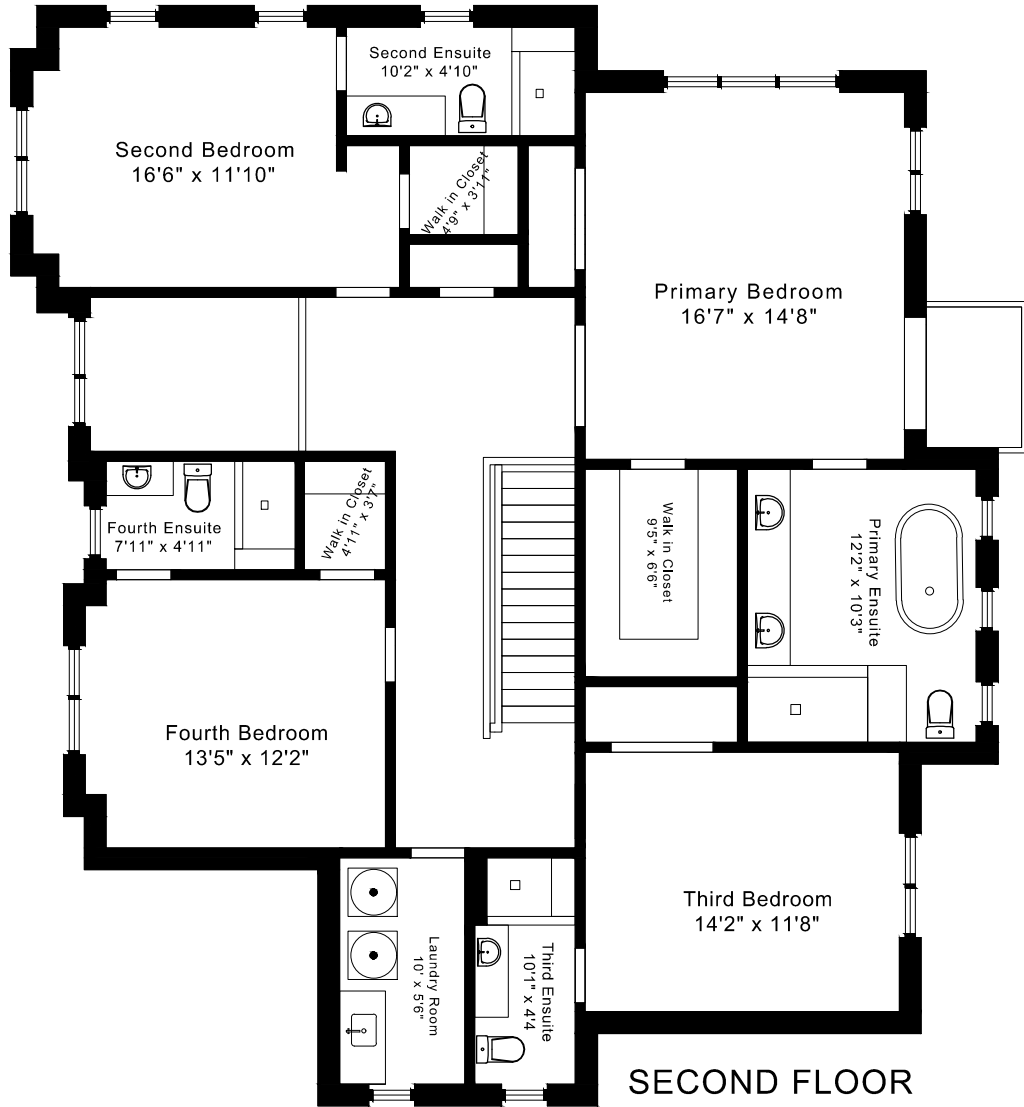


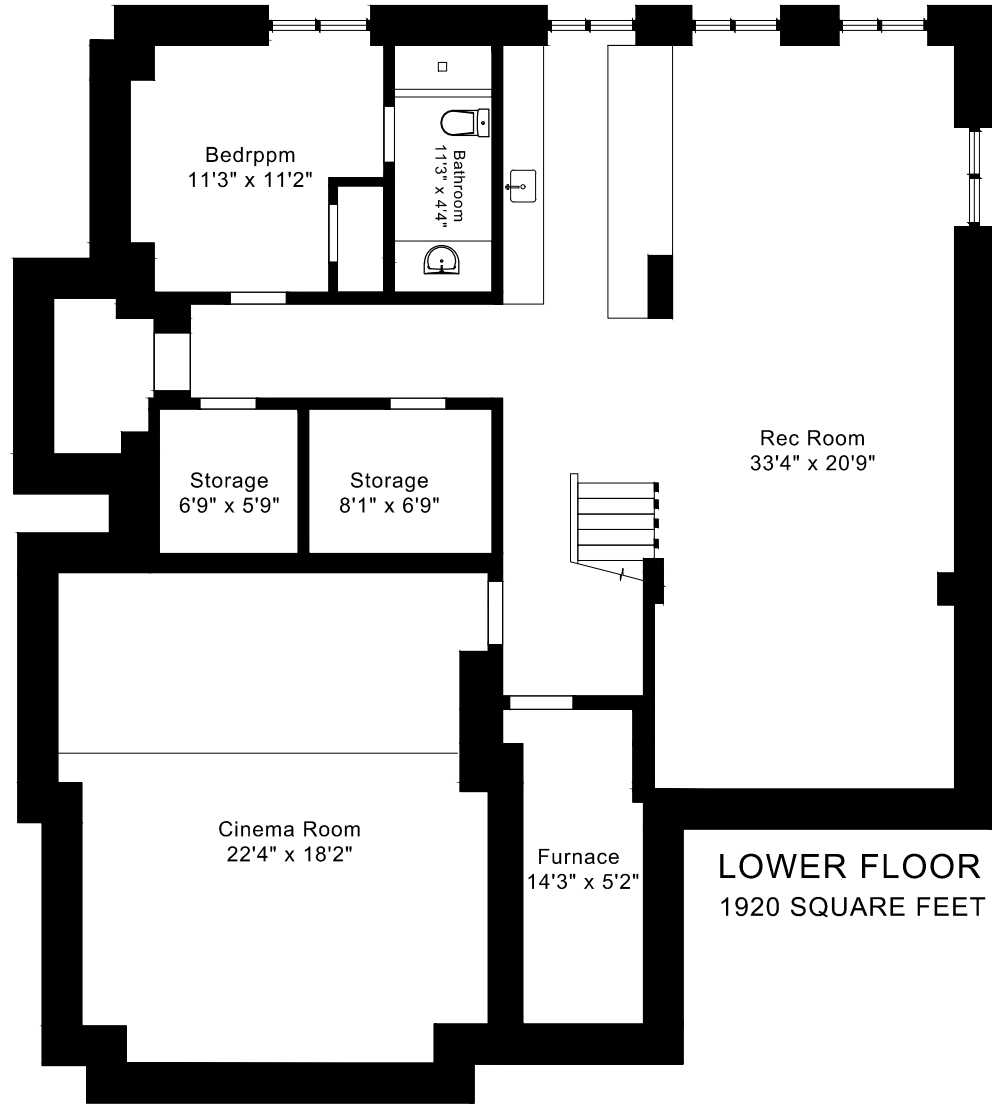
477 CANDLER ROAD FLOOR PLANS



MAIN FLOOR
1465 SQUARE FEET



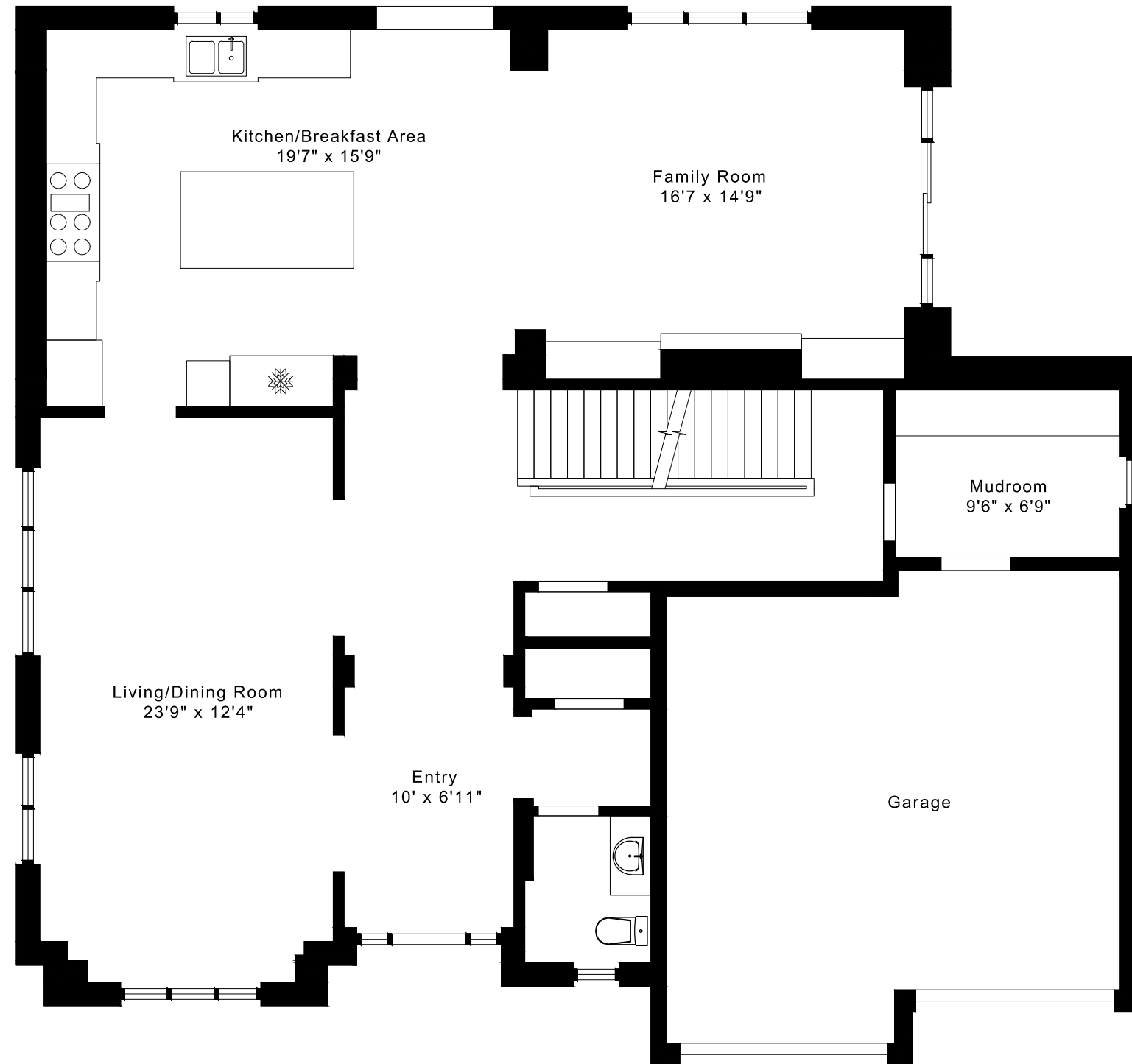
SECOND FLOOR
1695 SQUARE FEET



LOWER FLOOR
1920 SQUARE FEET

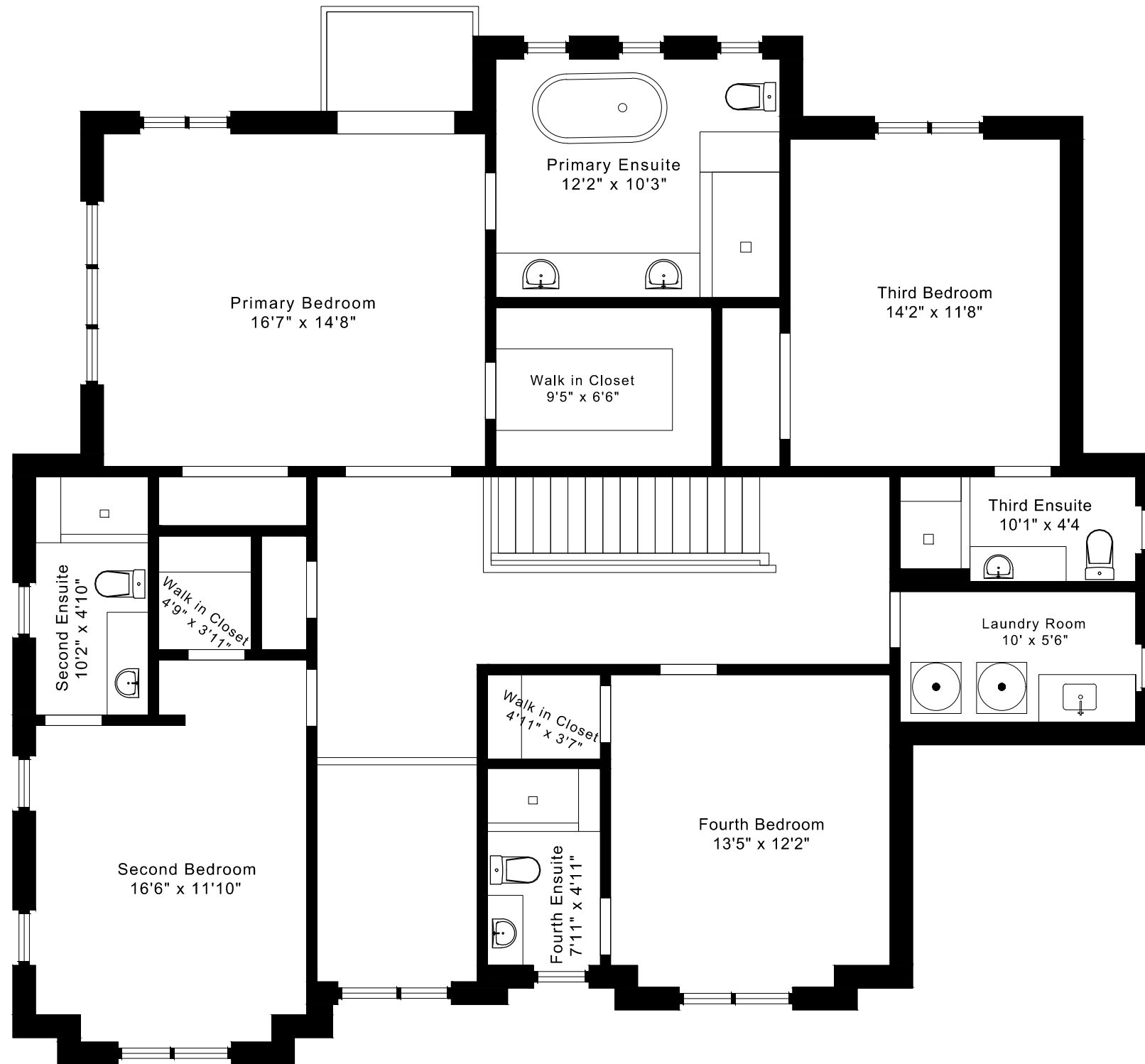
477 CANDLER ROAD FLOOR PLANS

MAIN FLOOR 1465 SQUARE FEET



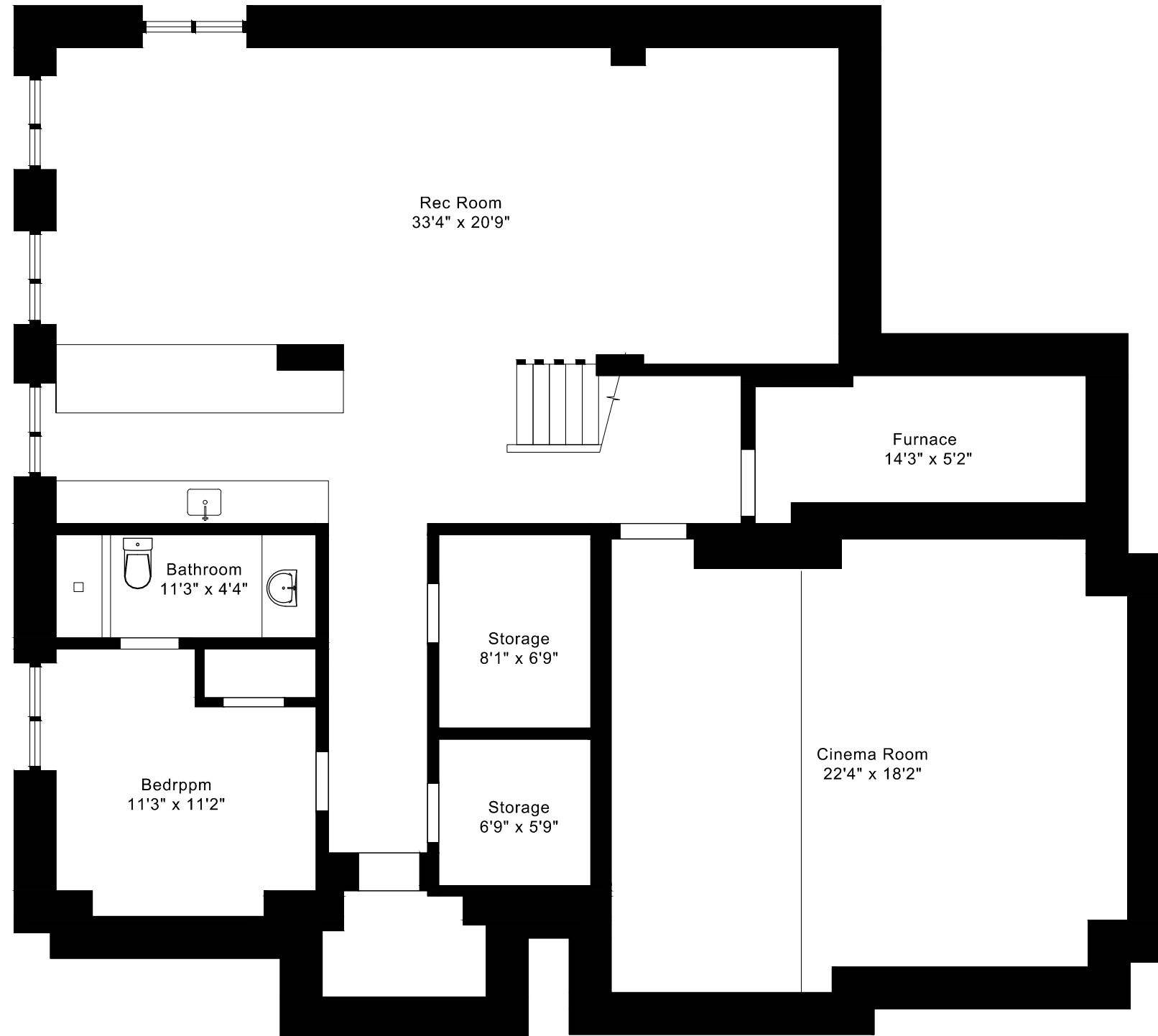
477 CANDLER ROAD FLOOR PLANS

SECOND FLOOR 1695 SQUARE FEET



477 CANDLER ROAD FLOOR PLANS

LOWER FLOOR 1920 SQUARE FEET



477 CANDLER ROAD ROOM MEASUREMENTS

Floor	Room	Imperial						Metric [m]		
		Length		Width		Height		Length	Width	Height
		Feet	Inches	Feet	Inches	Feet	Inches			
Second	Primary Bedroom	16	7	14	8	9	0	5,05	4,47	2,74
	Primary Ensuite	12	2	10	3	8	6	3,71	3,12	2,59
	Walk in Closet	9	5	6	6	9	0	2,87	1,98	2,74
	Second Bedroom	16	6	11	10	9	0	5,03	3,61	2,74
	Second Ensuite	10	2	4	10	8	6	3,10	1,47	2,59
	Walk in Closet	4	9	3	11	9	0	1,45	1,19	2,74
	Third Bedroom	14	2	11	8	9	0	4,32	3,56	2,74
	Third Ensuite	10	1	4	4	8	6	3,07	1,32	2,59
	Fourth Bedroom	13	5	12	2	9	0	4,09	3,71	2,74
	Fourth Ensuite	7	11	4	11	8	6	2,41	1,50	2,59
	Walk in Closet	4	11	3	7	9	0	1,50	1,09	2,74
	Laundry Room	10	0	5	6	9	0	3,05	1,68	2,74
Main	Entry	10	0	6	11	19	0	3,05	2,11	5,79
	Living/Dining Room	23	9	12	4	10	2	7,24	3,76	3,10
	Kitchen/Breakfast Area	19	7	15	9	10	0	5,97	4,80	3,05
	Family Room	16	7	14	9	10	0	5,05	4,50	3,05
	Mudroom	9	6	6	9	10	0	2,90	2,06	3,05
Lower	Rec Room	33	4	20	9	7	4	10,16	6,32	2,24
	Bedroom	11	3	11	2	7	4	3,43	3,40	2,24
	Bathroom	11	3	4	4	7	4	3,43	1,32	2,24
	Cinema Room	22	4	18	2	7	4	6,81	5,54	2,24
	Storage	6	9	5	9	7	4	2,06	1,75	2,24
	Storage	8	1	6	9	7	4	2,46	2,06	2,24
	Furnace	14	3	5	2	7	4	4,34	1,57	2,24

The following is a disclaimer regarding the approximate nature of dimensions and floor areas listed in this document:

Disclaimer:

The dimensions and floor areas listed in this document are provided as an estimate only and are intended to be used for illustration purposes only. These measurements are not necessarily meant to be a perfect representation of the actual space.

Notes regarding measurement methods and accuracy:

The utilization of laser measurement technology during the 3D model capturing process at the location provides an accurate representation of floor plans, with a typical margin of error of 3-5%. For the most accurate and official measurement data, it is advised to consult official documents such as MPAC records, builder's pre-construction plans, or data from certified measurement companies.

Exterior wall thickness is included in the calculation of the overall square footage and is considered as a component of the footprint. The wall thickness measurement is obtained onsite whenever possible, or estimated in the event where obtaining onsite measurements is not possible, such as in the case of condominium buildings where wall thickness may vary throughout the building.