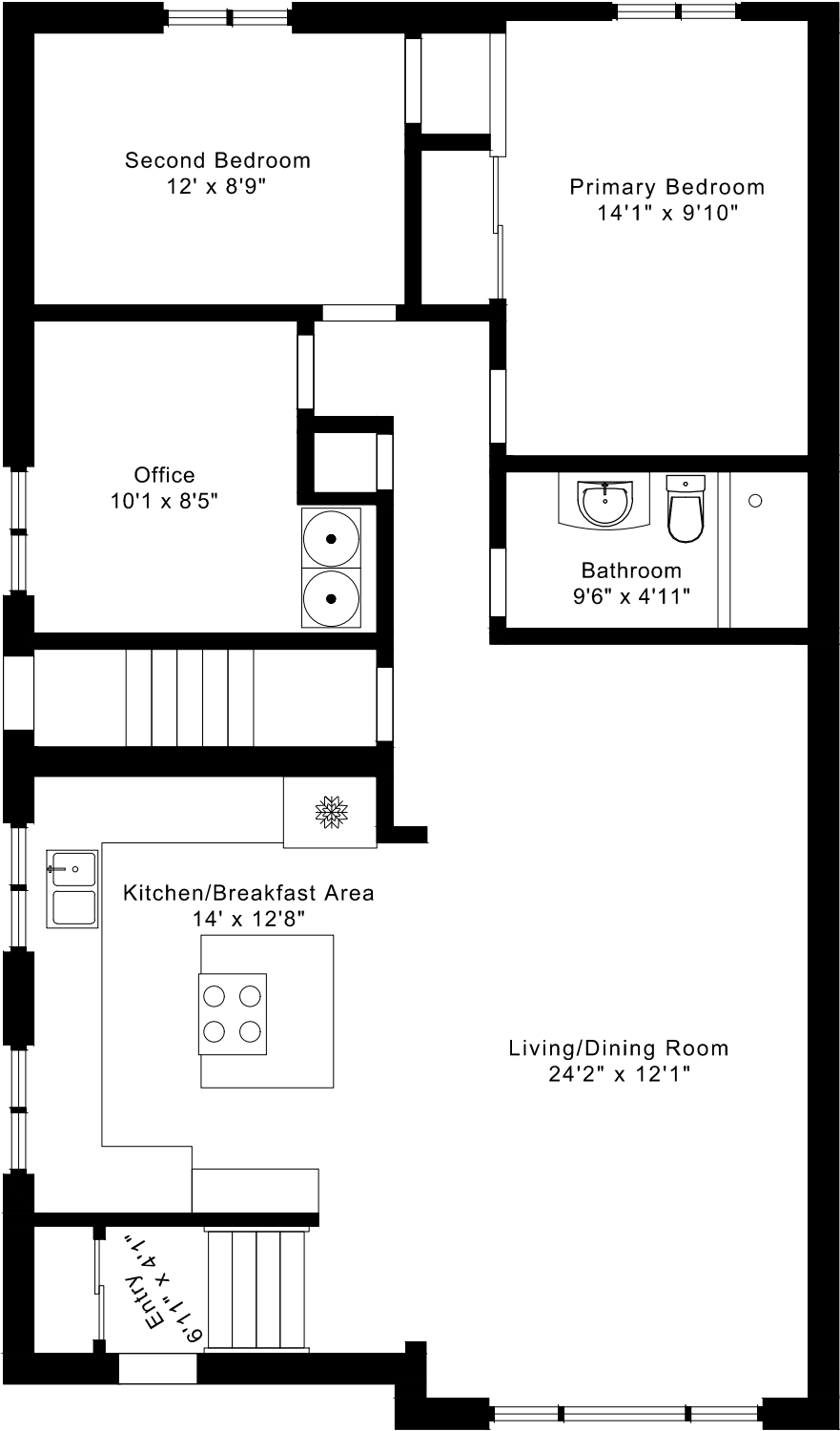
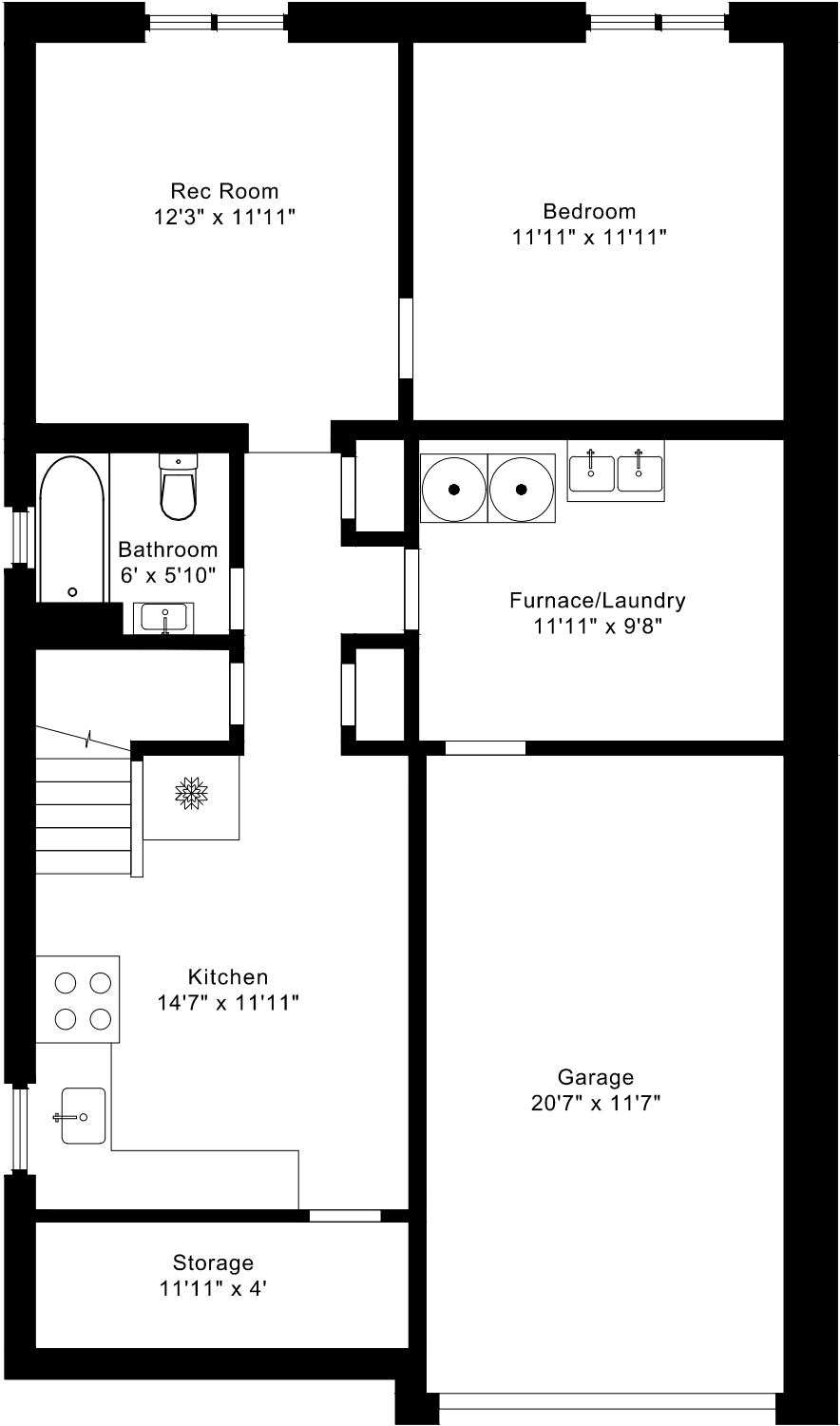


110 VICTORY DRIVE FLOOR PLANS



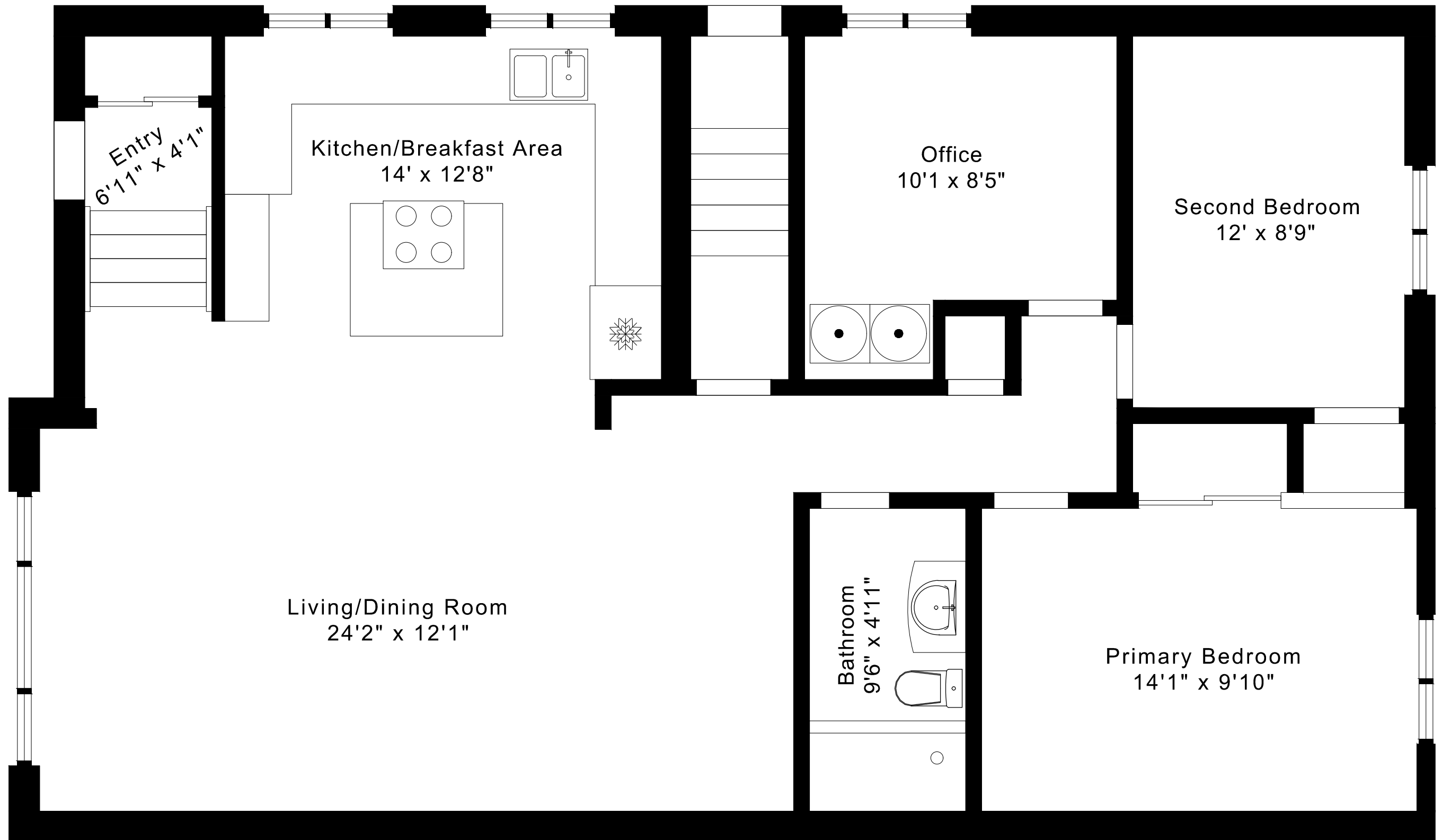
MAIN FLOOR
1215 SQUARE FEET



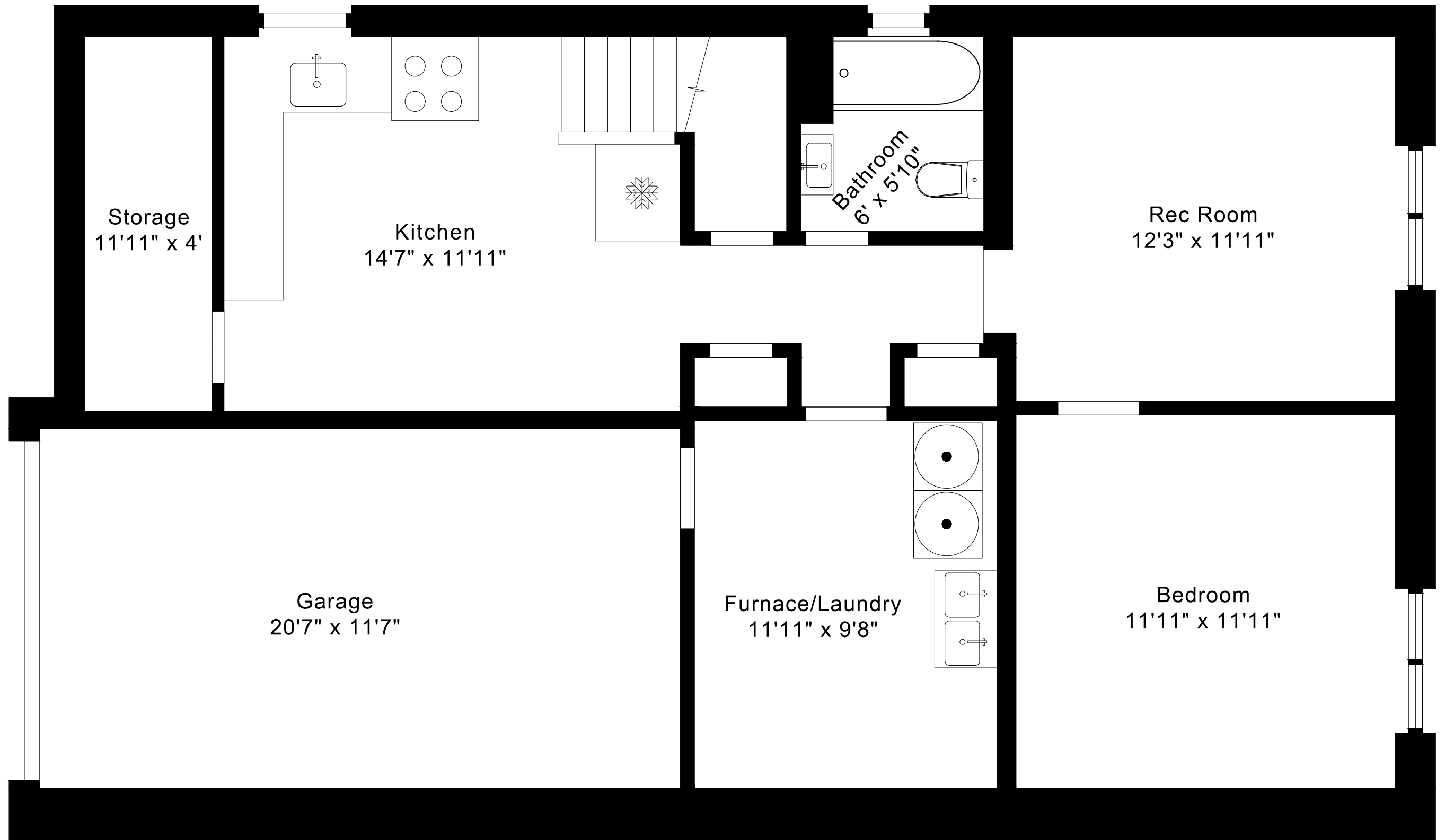
LOWER FLOOR
925 SQUARE FEET

110 VICTORY DRIVE FLOOR PLANS

MAIN FLOOR 1215 SQUARE FEET



110 VICTORY DRIVE
FLOOR PLANS
LOWER FLOOR 925 SQUARE FEET



110 VICTORY DRIVE ROOM MEASUREMENTS

Floor	Room	Imperial						Metric [m]		
		Length		Width		Height		Length	Width	Height
		Feet	Inches	Feet	Inches	Feet	Inches			
Main	Entry	6	11	4	1	11	3	2,11	1,24	3,43
	Living/Dining Room	24	2	12	1	7	11	7,37	3,68	2,41
	Kitchen/Breakfast Area	14	0	12	8	7	11	4,27	3,86	2,41
	Primary Bedroom	14	1	9	10	7	11	4,29	3,00	2,41
	Second Bedroom	12	0	8	9	7	11	3,66	2,67	2,41
	Office	10	1	8	5	7	11	3,07	2,57	2,41
	Bathroom	9	6	4	11	7	11	2,90	1,50	2,41
Lower	Kitchen	14	7	11	11	7	6	4,45	3,63	2,29
	Rec Room	12	3	11	11	7	2	3,73	3,63	2,18
	Bedroom	11	11	11	11	7	2	3,63	3,63	2,18
	Bathroom	6	0	5	10	7	4	1,83	1,78	2,24
	Furnace/Laundry	11	11	9	8	7	6	3,63	2,95	2,29
	Storage	11	11	4	0	7	6	3,63	1,22	2,29
	Garage	20	7	11	7	7	6	6,27	3,53	2,29

CAPTURED ON: 24 APR 2026
 DIMENSIONS ARE APPROXIMATE AND SHOULD BE CONSIDERED
 ILLUSTRATIVE ONLY.

1215 sq ft + 925 sq ft
 BELOW GRADE

The following is a disclaimer regarding the approximate nature of dimensions and floor areas listed in this document:

Disclaimer:

The dimensions and floor areas listed in this document are provided as an estimate only and are intended to be used for illustration purposes only. These measurements are not necessarily meant to be a perfect representation of the actual space.

Notes regarding measurement methods and accuracy:

The utilization of laser measurement technology during the 3D model capturing process at the location provides an accurate representation of floor plans, with a typical margin of error of 3-5%. For the most accurate and official measurement data, it is advised to consult official documents such as MPAC records, builder's pre-construction plans, or data from certified measurement companies.

Exterior wall thickness is included in the calculation of the overall square footage and is considered as a component of the footprint. The wall thickness measurement is obtained onsite whenever possible, or estimated in the event where obtaining onsite measurements is not possible, such as in the case of condominium buildings where wall thickness may vary throughout the building.